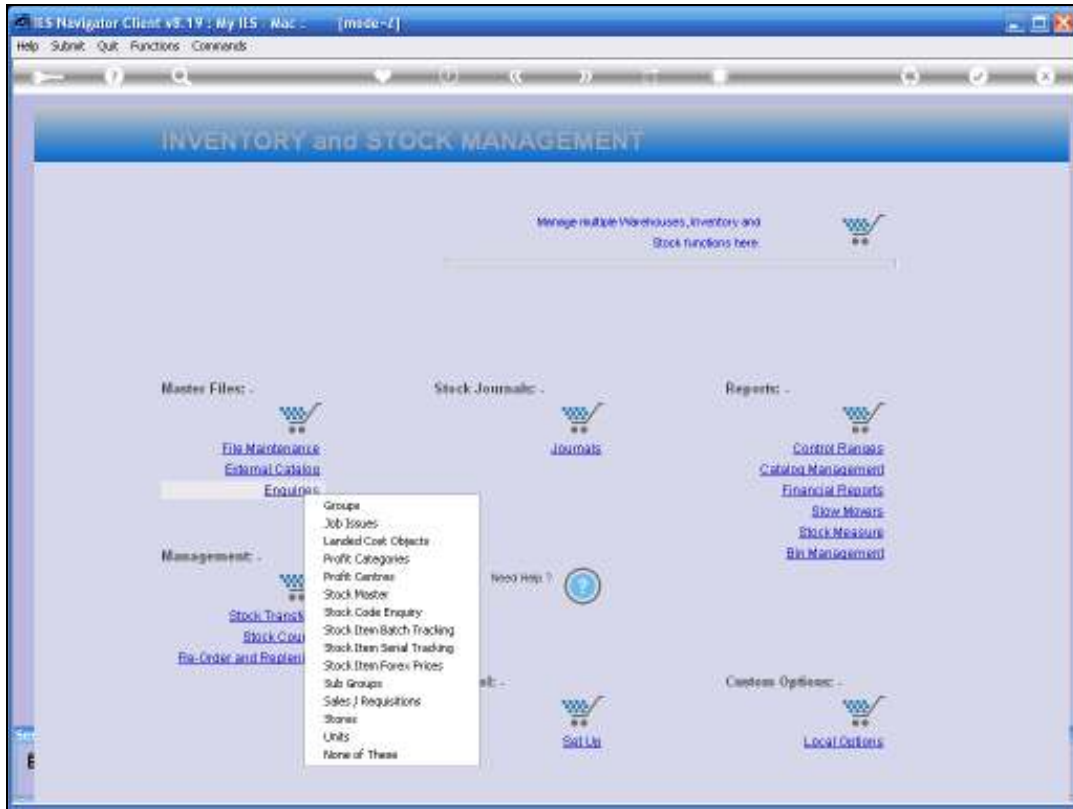




Slide 1

Slide notes: In this tutorial we look at a Serial Number enquiry. Some Stock Items may be managed with Serial Number control, and in this case we should be able to track any Serial Number, to find out what has happened to the Item, i.e. do we still have it, has it been sold and to whom, etc.



Slide 2
Slide notes:

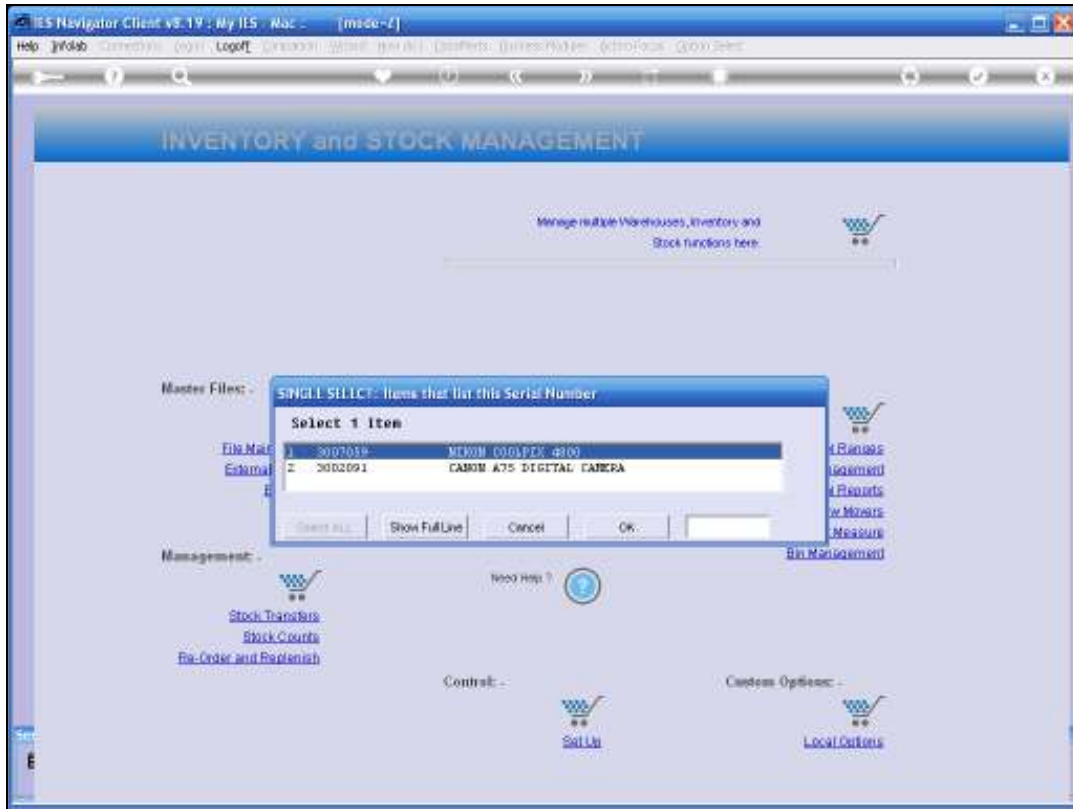


Slide 3
Slide notes:



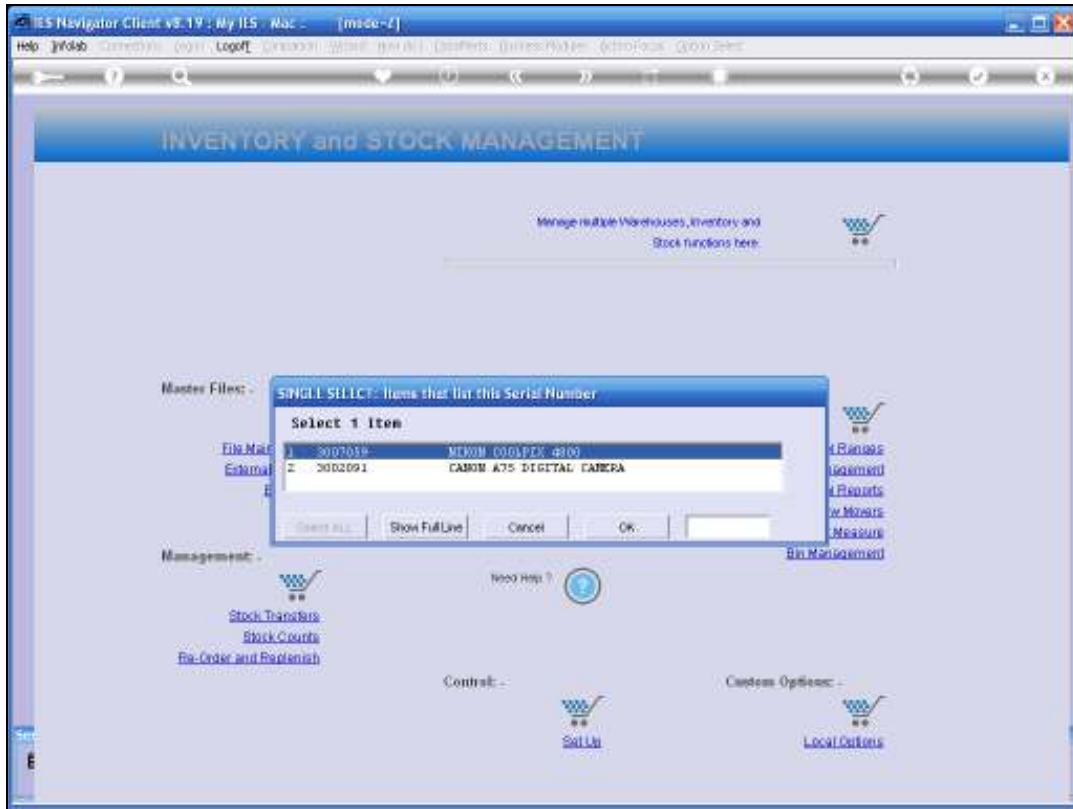
Slide 4

Slide notes: To enquire on a Serial Number, we must provide the Serial Number we are interested in.

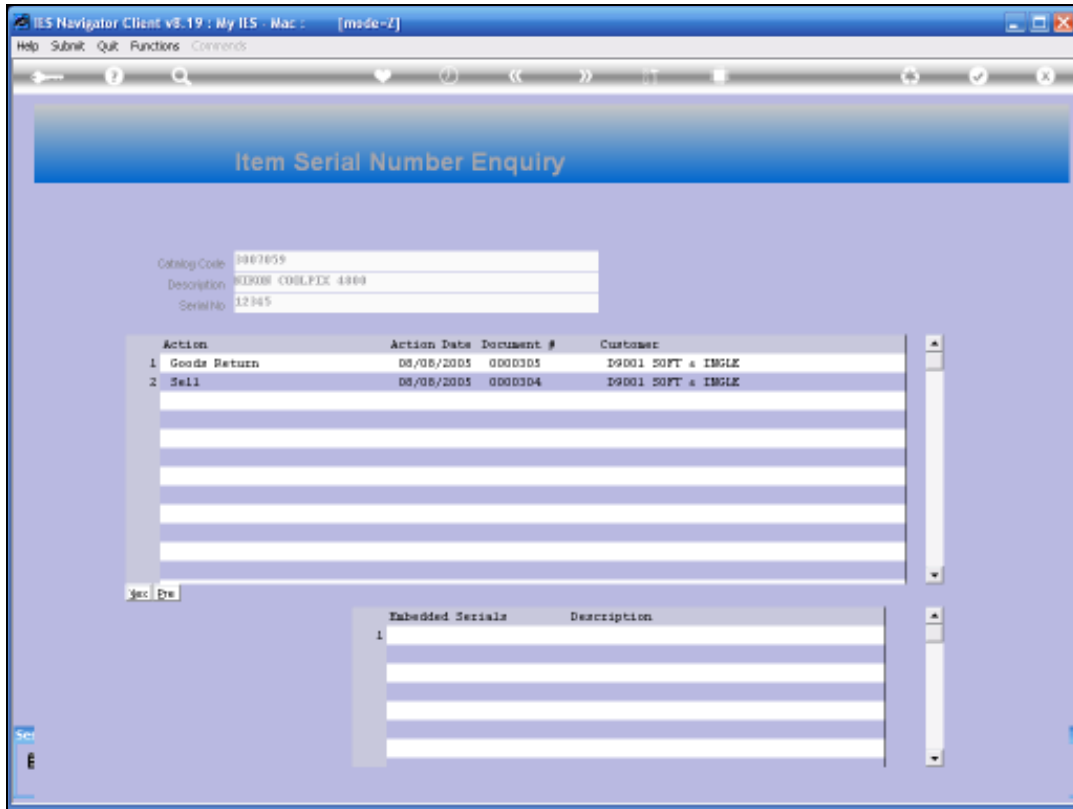


Slide 5

Slide notes: It is possible that there may be multiple instances of a selected Serial Number, i.e. on different products.



Slide 6
Slide notes:



Slide 7
Slide notes:

IES Navigator Client v8.19 : My IIS - Mac : [made-1]

Help Submit Quit Functions Commands

Item Serial Number Enquiry

Catalog Code: 007059
Description: MINOR COOLPIX 4800
SerialNo: 12345

Action	Action Date	Document #	Customer
1 Goods Return	08/08/2005	0000305	D9001 SOFT & IMGLE
2 Sell	08/08/2005	0000304	D9001 SOFT & IMGLE

Sec Eye

Embedded Serials	Description
1	

Slide 8

Slide notes: And on this Enquiry we can see that the Item was sold to a certain Customer, and then returned by that Customer. Note that embedded serial numbers are also possible, i.e. a Laptop may have a primary serial number, and inside the Laptop there may also be serial numbers for some parts.