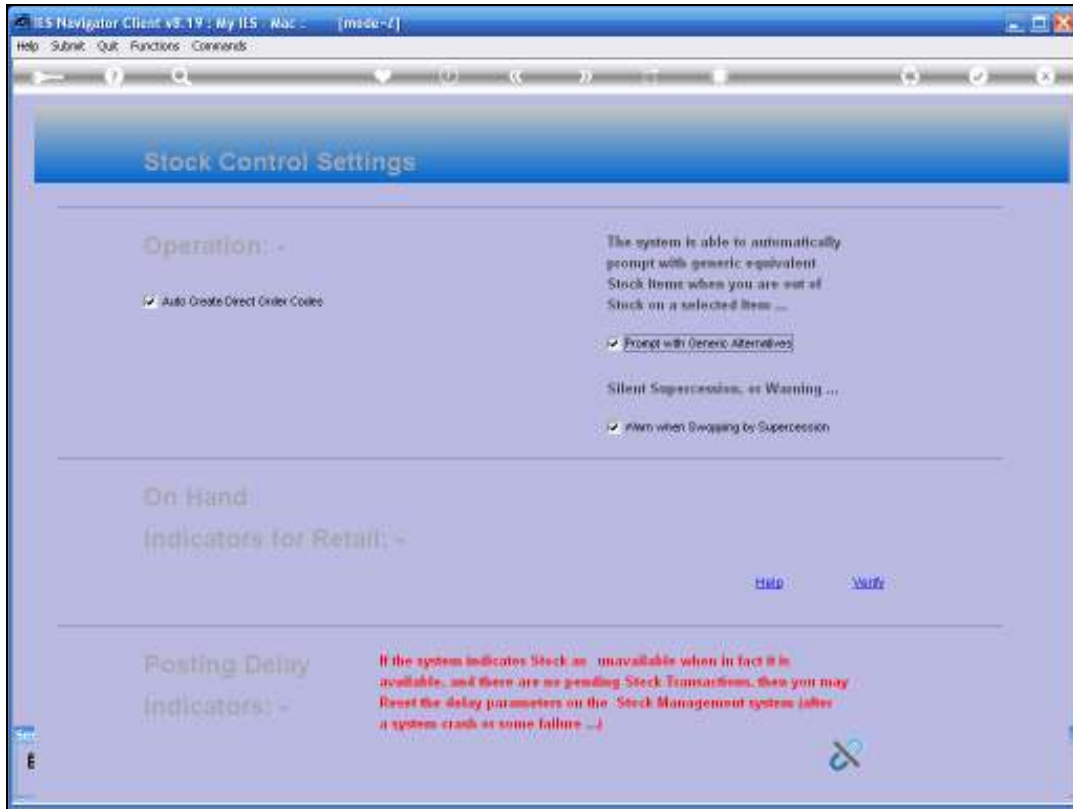


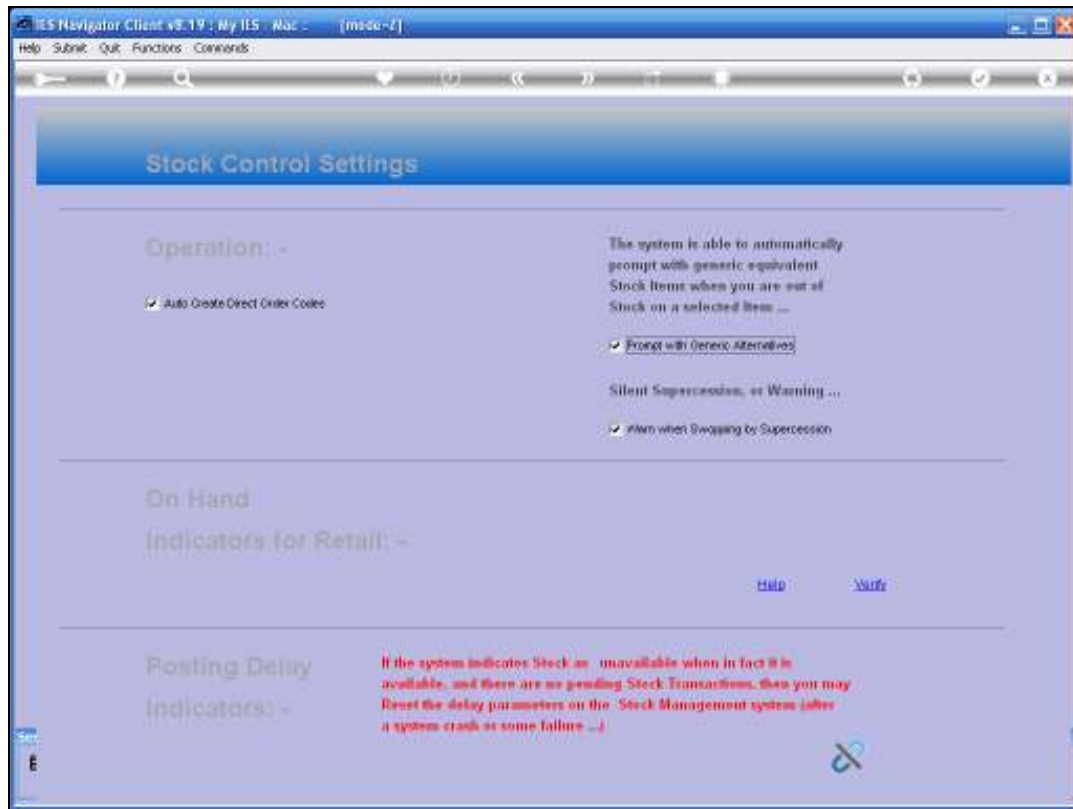


## Slide 1

Slide notes: In this tutorial we will consider the Stock Control Settings. This does not concern the average User, and is only of interest to the Administrator of the system.

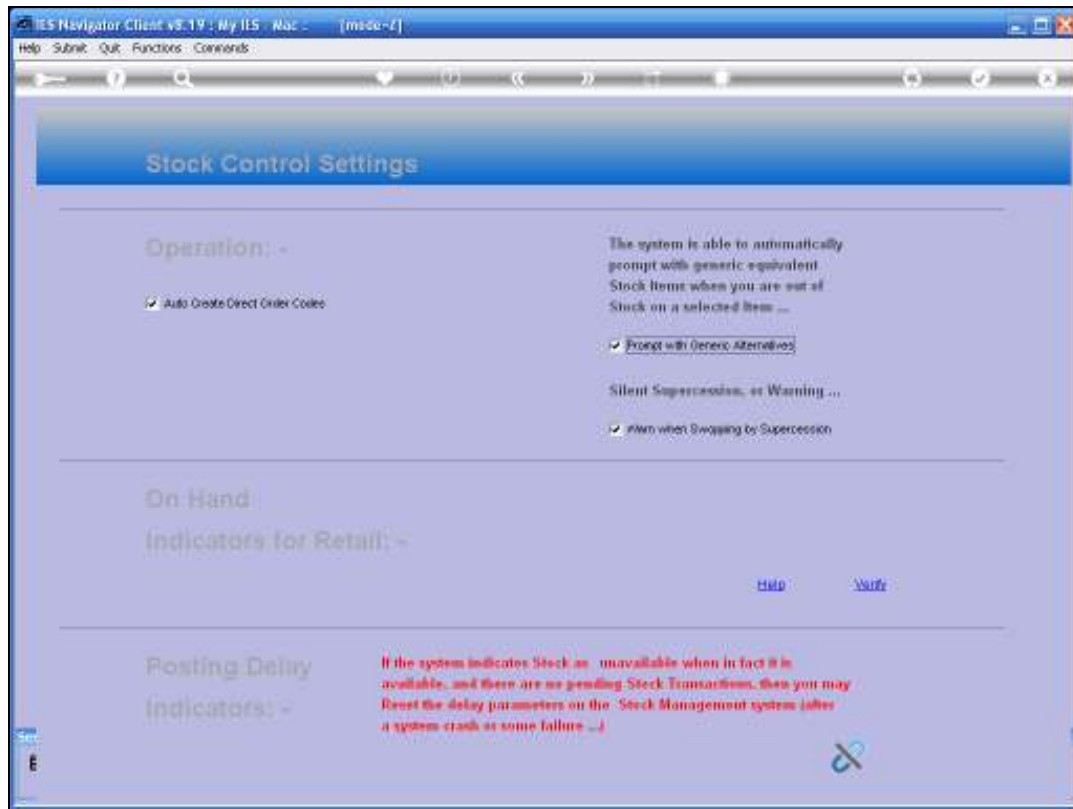


Slide 2  
Slide notes:



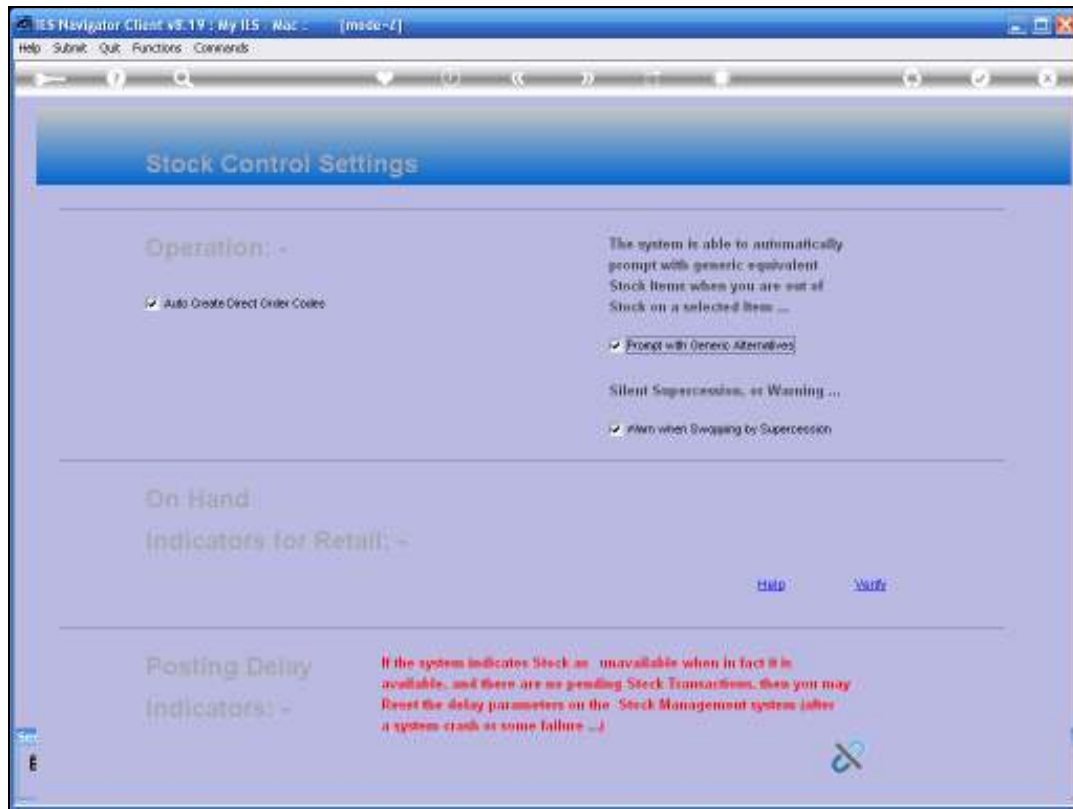
### Slide 3

Slide notes: The 'Auto Create' item is checked when you wish the system to automatically create Direct Order codes when new Stock Items are opened. This is useful only where there is a common practice to order Stock as Direct Items instead of 'as Stock Items', as some people do. In this case, any Stock Item can be ordered on a Purchase Order as a Direct Item, and there will still be Order History for the Stock Item.



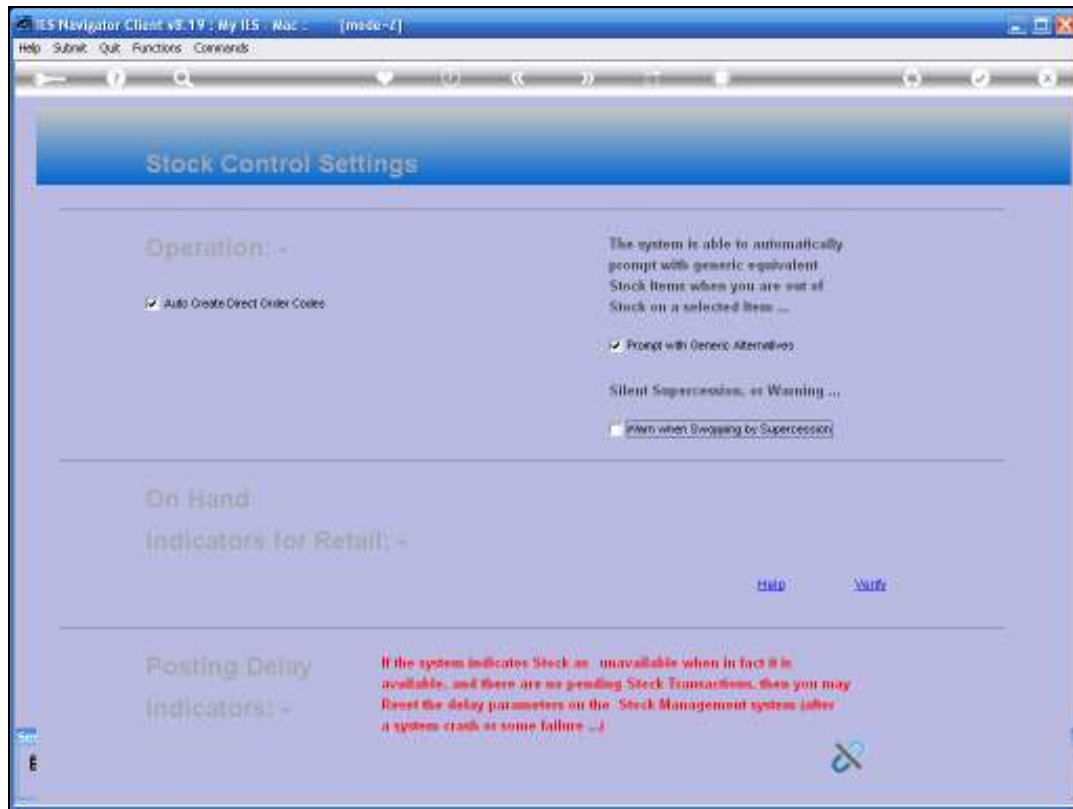
## Slide 4

Slide notes: 'Generic Alternatives' is to be checked when you want the system to prompt the User with generic alternatives if a sought Item is out of Stock.



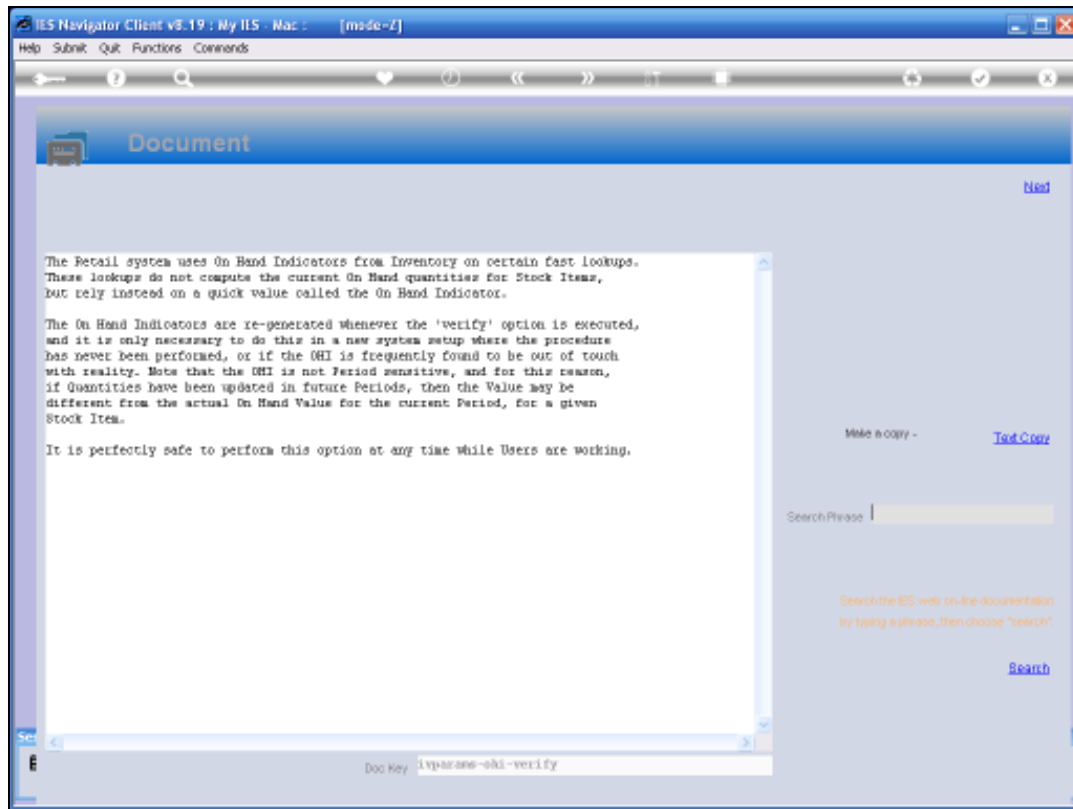
## Slide 5

Slide notes: Supersession is automatic when specified on a Stock Item master, but if you wish the User to be warned about it when it happens, then check the 'warn' field.



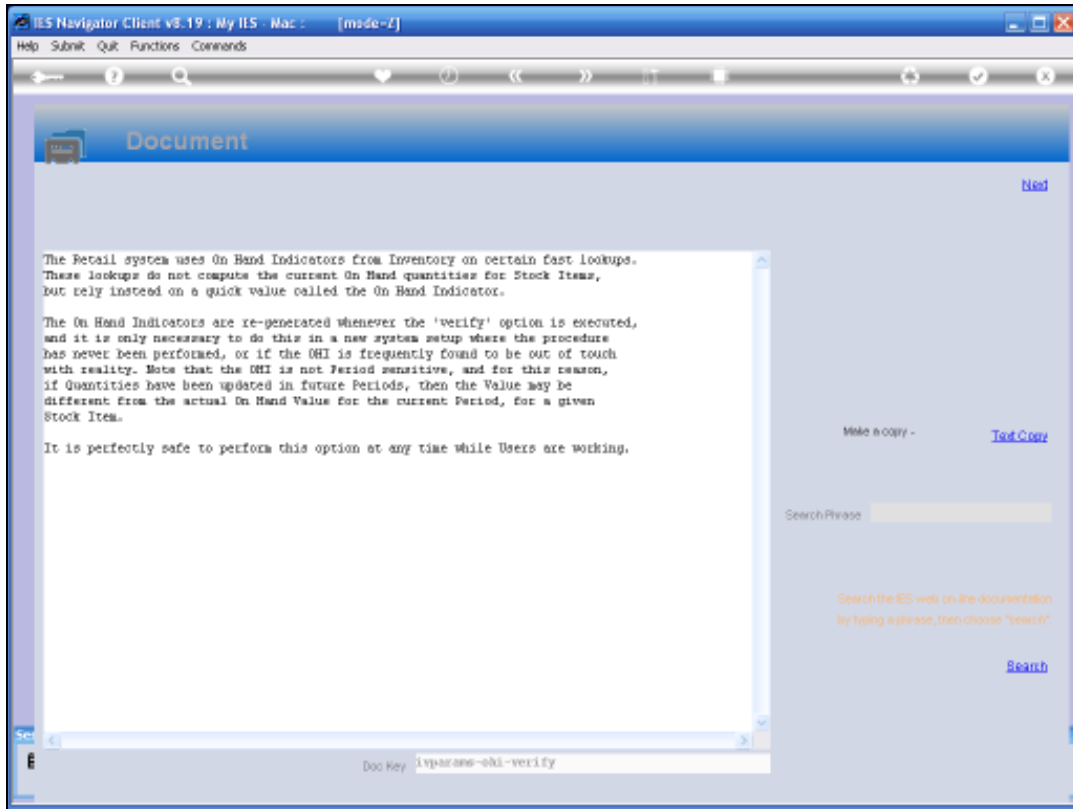
## Slide 6

Slide notes: On Hand Indicators for Retail are used for fast lookups during Retail Sales, but these indicators do not always get the absolute latest information from the Stock system.

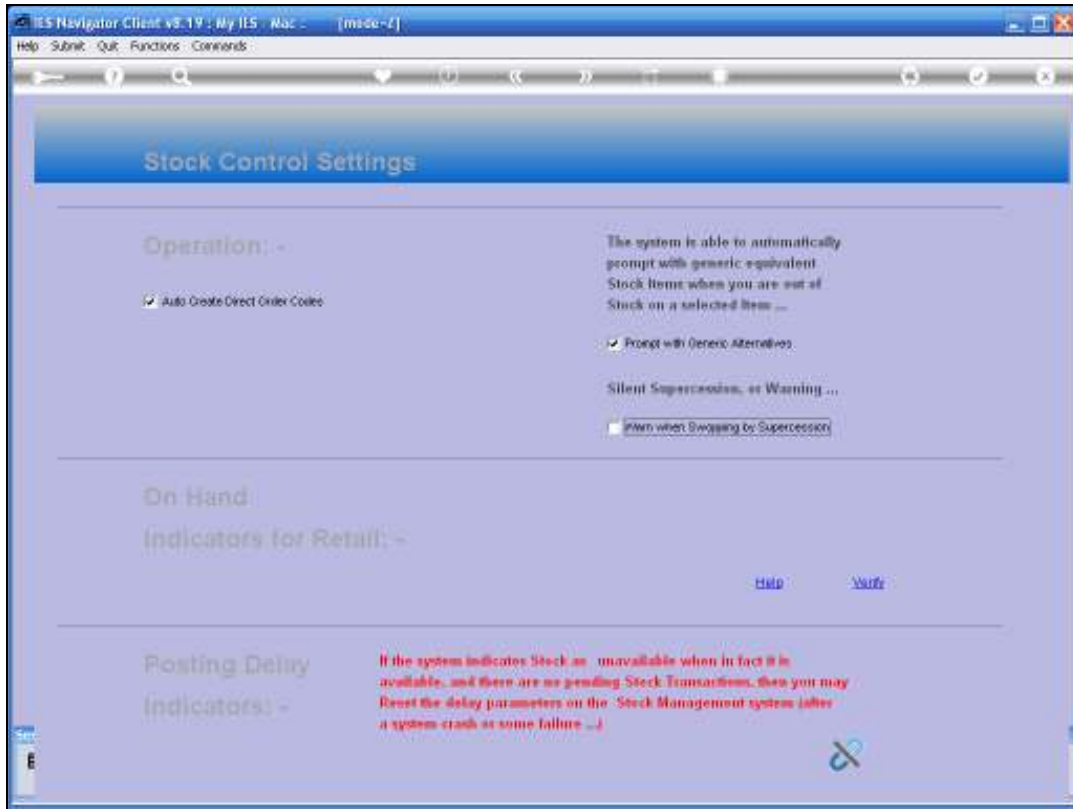


## Slide 7

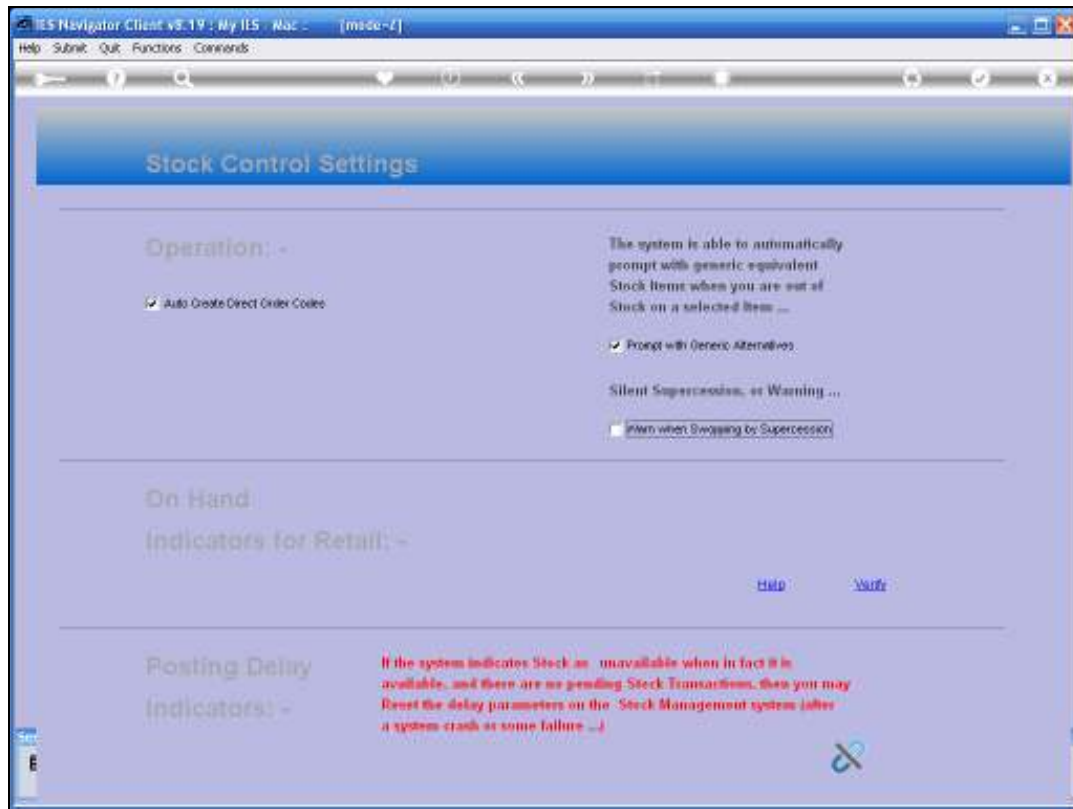
Slide notes: On the Help, we can read more about this, and how and when to use the 'verify' function.



Slide 8  
Slide notes:

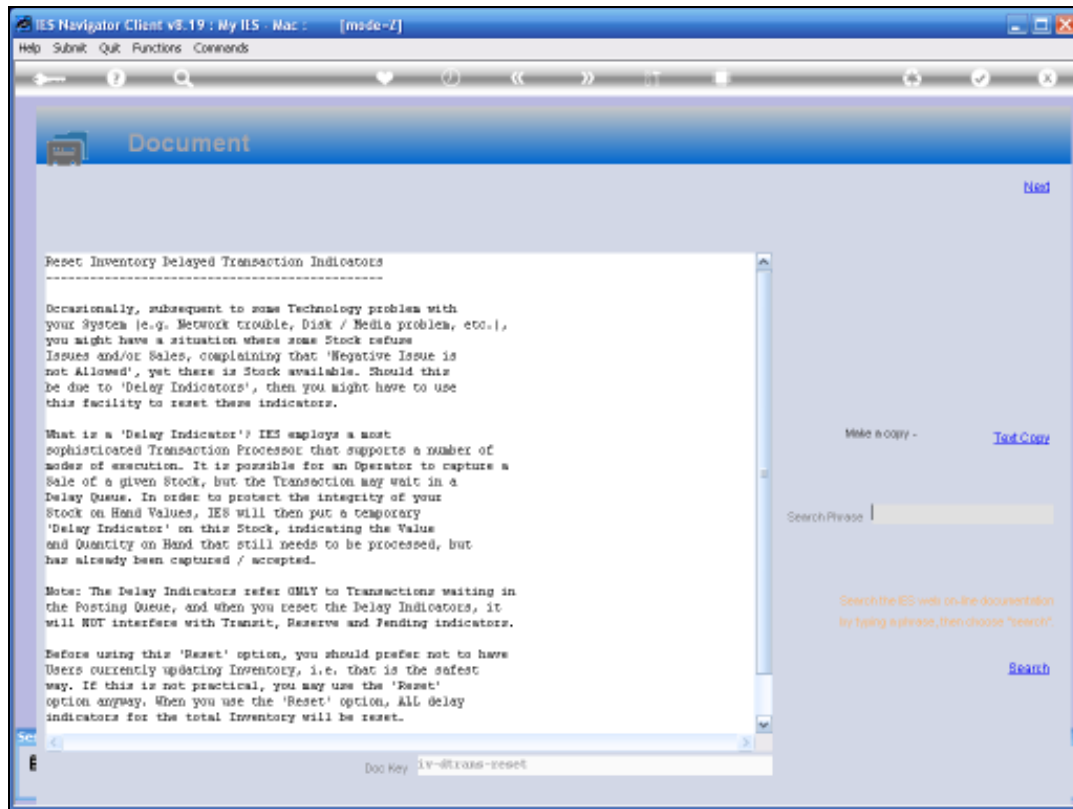


Slide 9  
Slide notes:



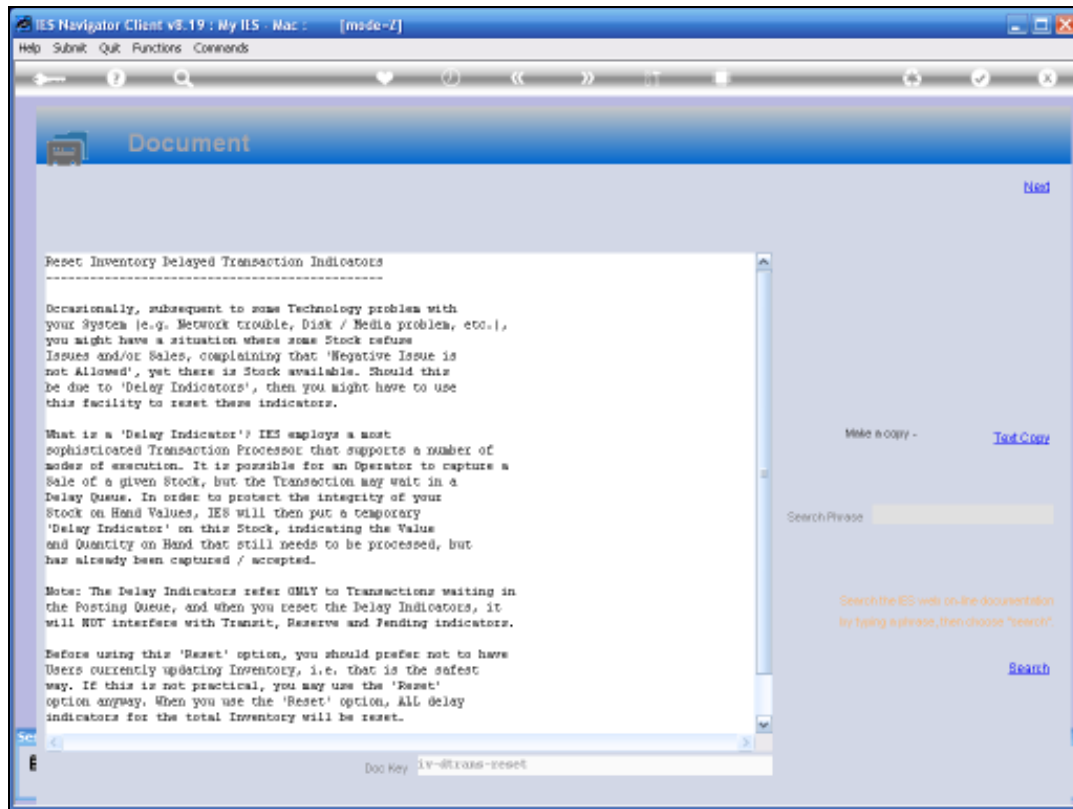
## Slide 10

Slide notes: The Posting Delay Indicators has a global reset function that you may never have to use, but in the event of some catastrophe that results in these indicators not being reset by themselves, this function is provided here.



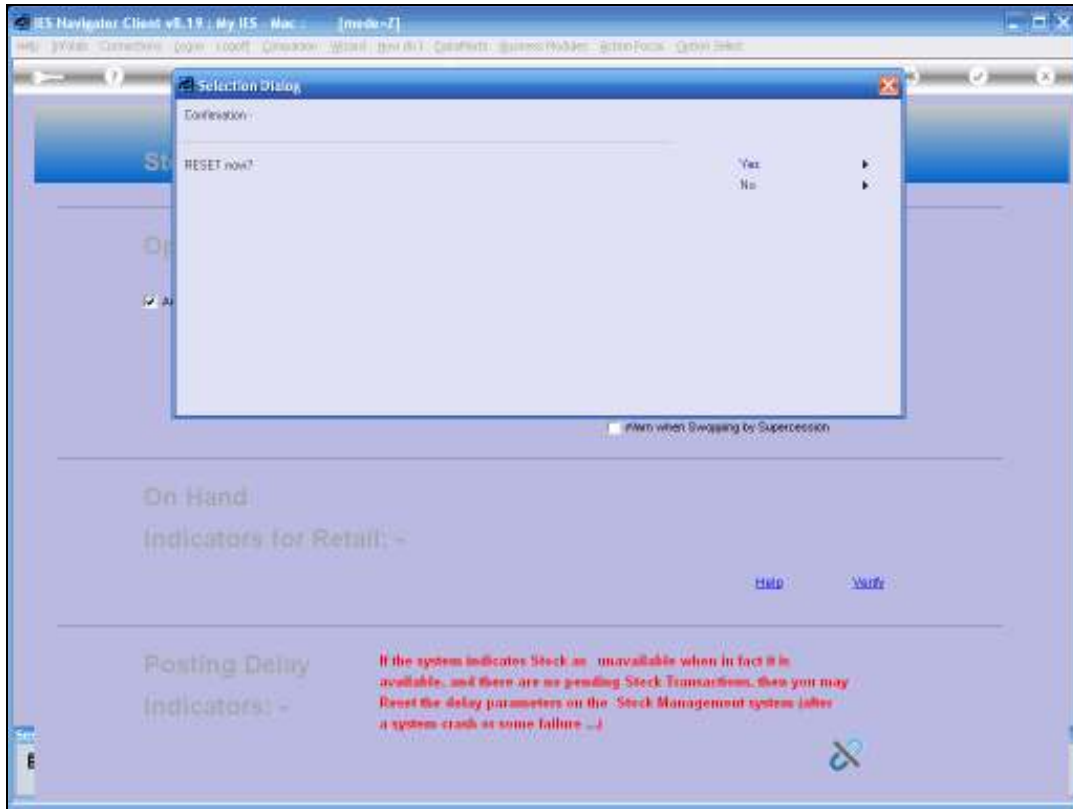
Slide 11

Slide notes: Here we have a detailed explanation available.



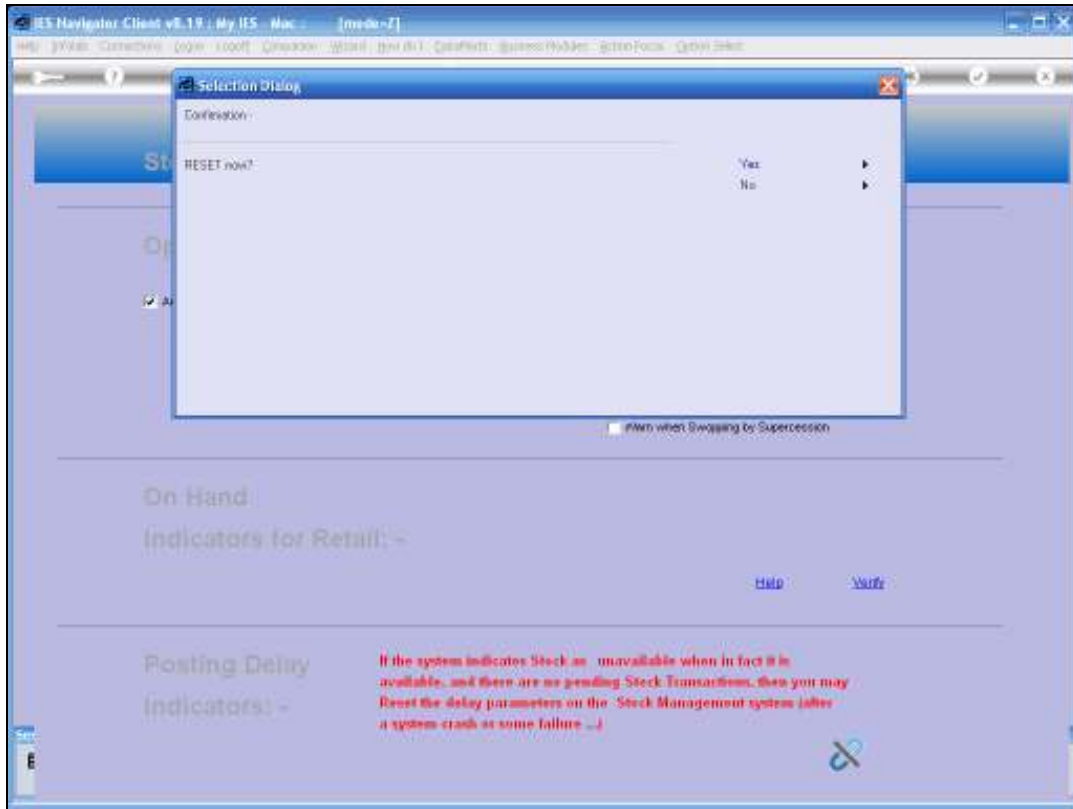
Slide 12

Slide notes:

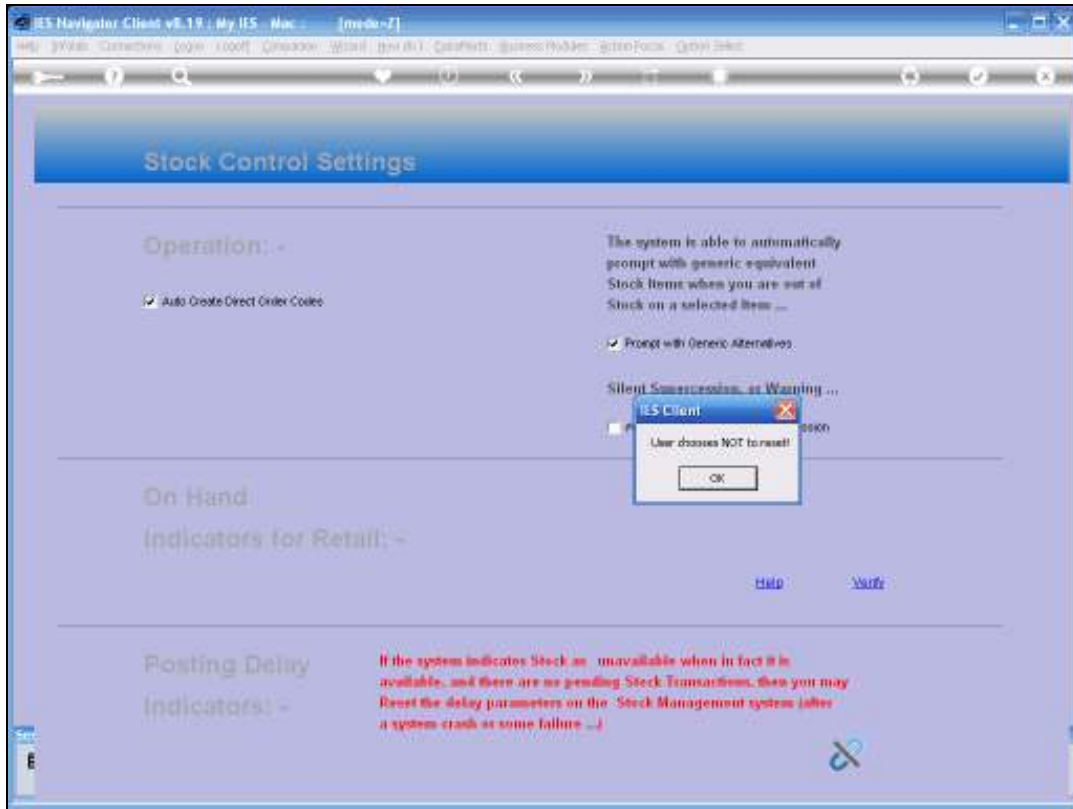


Slide 13

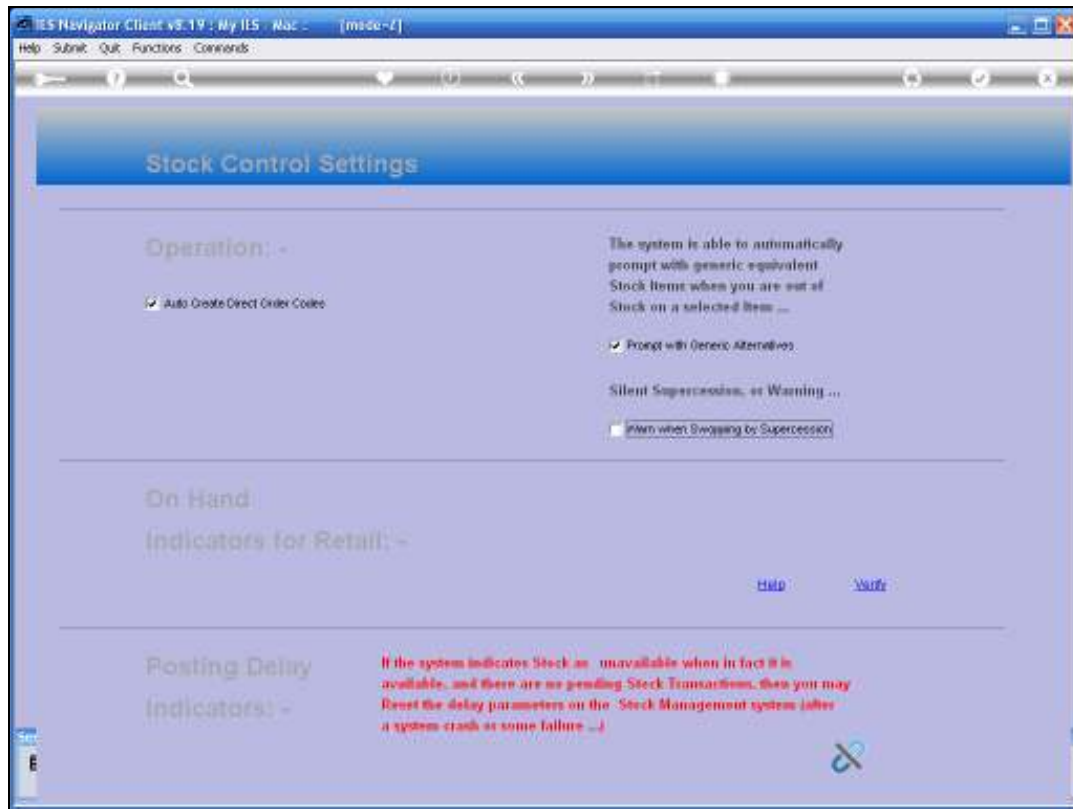
Slide notes:



Slide 14  
Slide notes:



Slide 15  
Slide notes:



Slide 16

Slide notes: Usually, we visit this screen during set up of the system and possibly never again.