



Slide 1

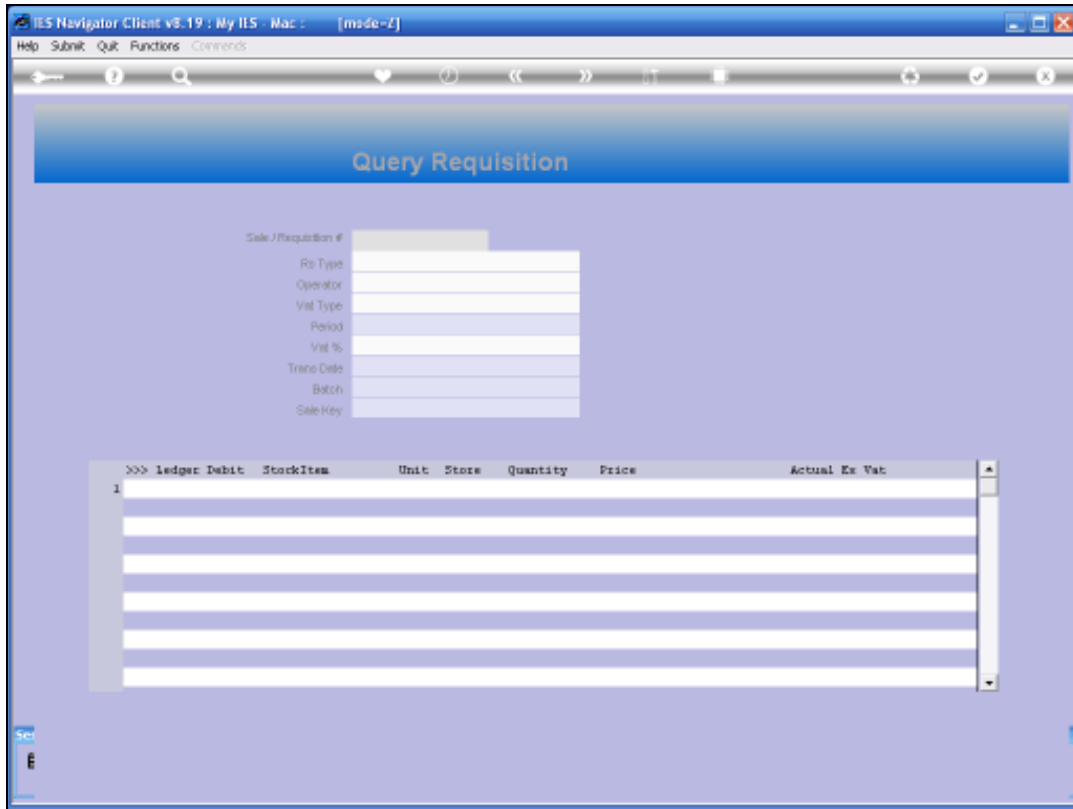
Slide notes: We will look at the Enquiry Option for Stock Sales and Requisitions.



Slide 2
Slide notes:

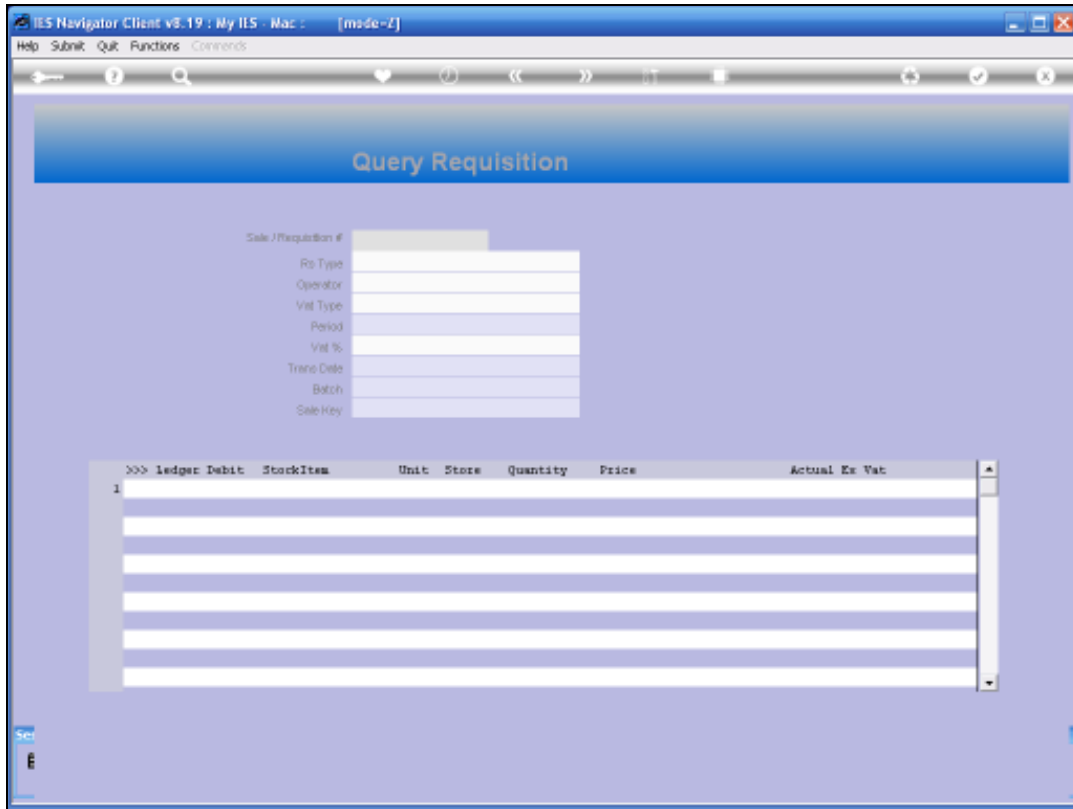


Slide 3
Slide notes:



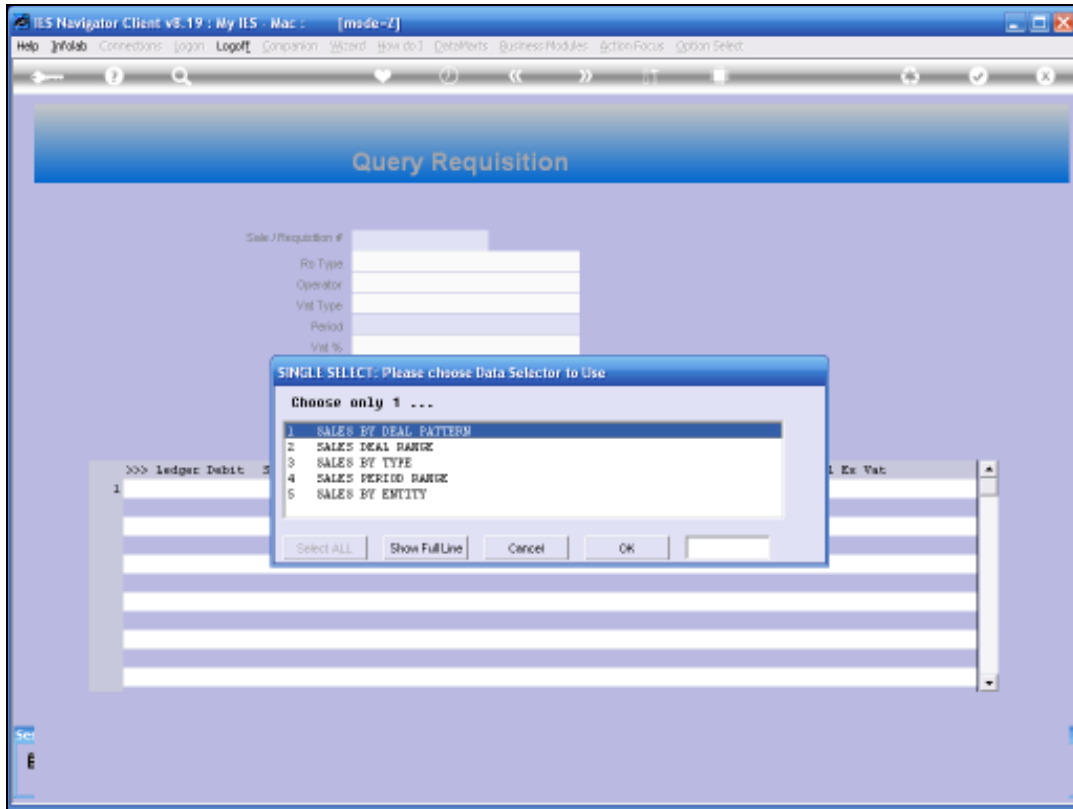
Slide 4

Slide notes: Stock Sales and Requisitions refer only to Stock Issues, and not to Retail Stock Sales. A Stock Sale is an Issue to AR Debtors, and usually only internal AR Debtor Accounts, because for Customer AR Accounts we will use Retail Sales. A Stock Requisition is an internal Stock Issue, usually to General Ledger or Job Costing.

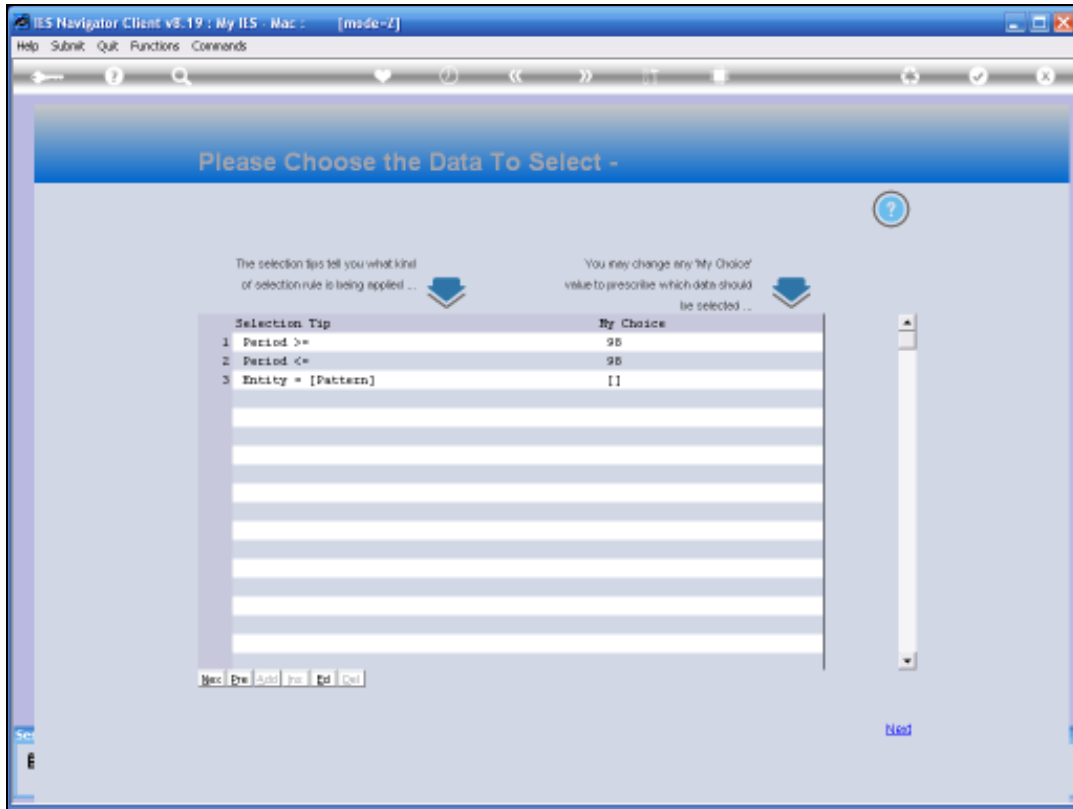


Slide 5

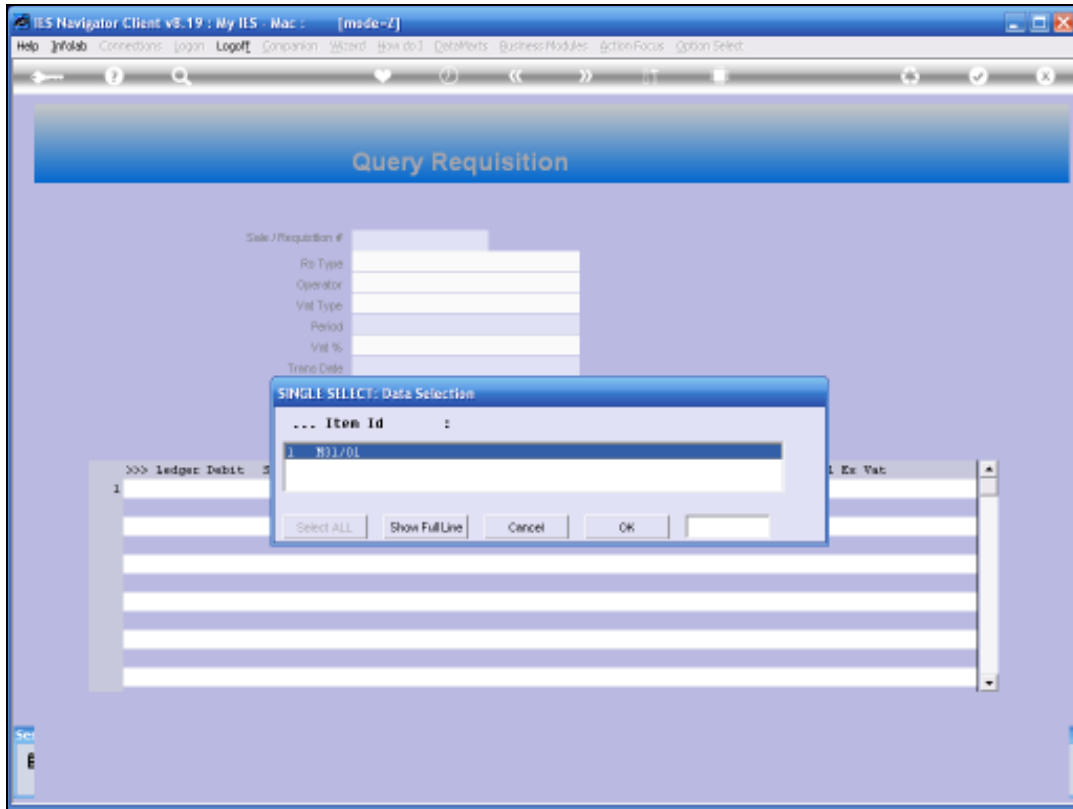
Slide notes: The Requisition Number can be typed or retrieved with the Lookup.



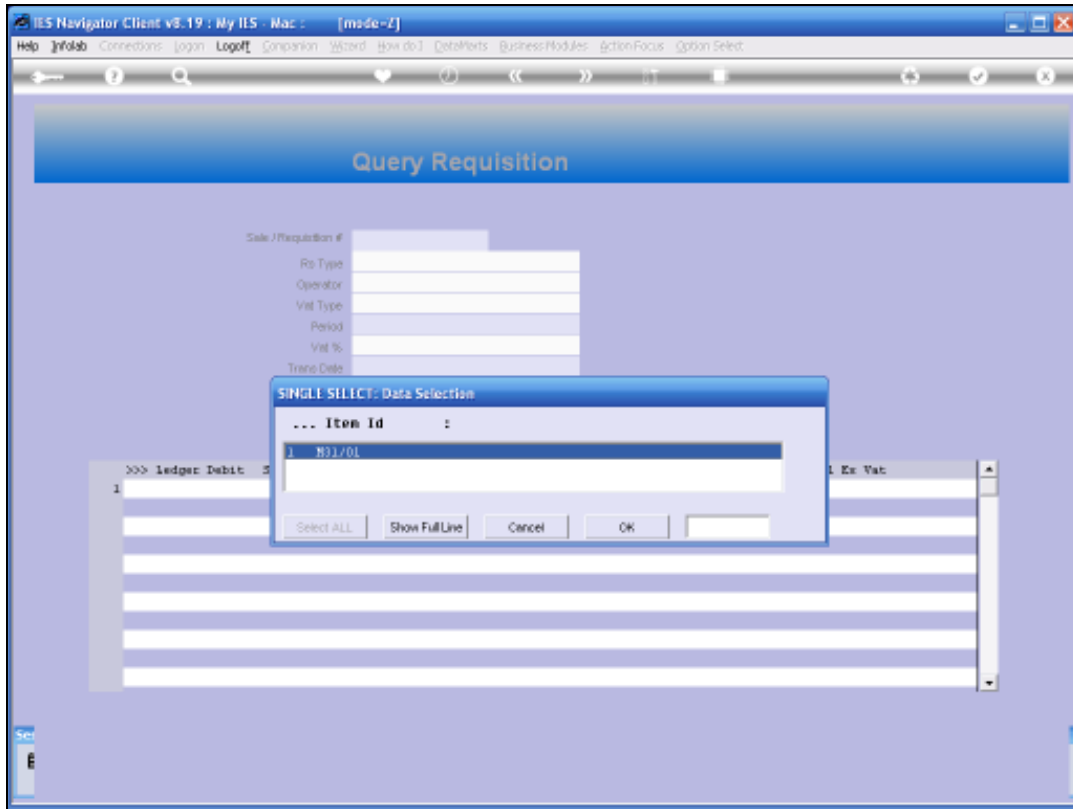
Slide 6
Slide notes:



Slide 8
Slide notes:

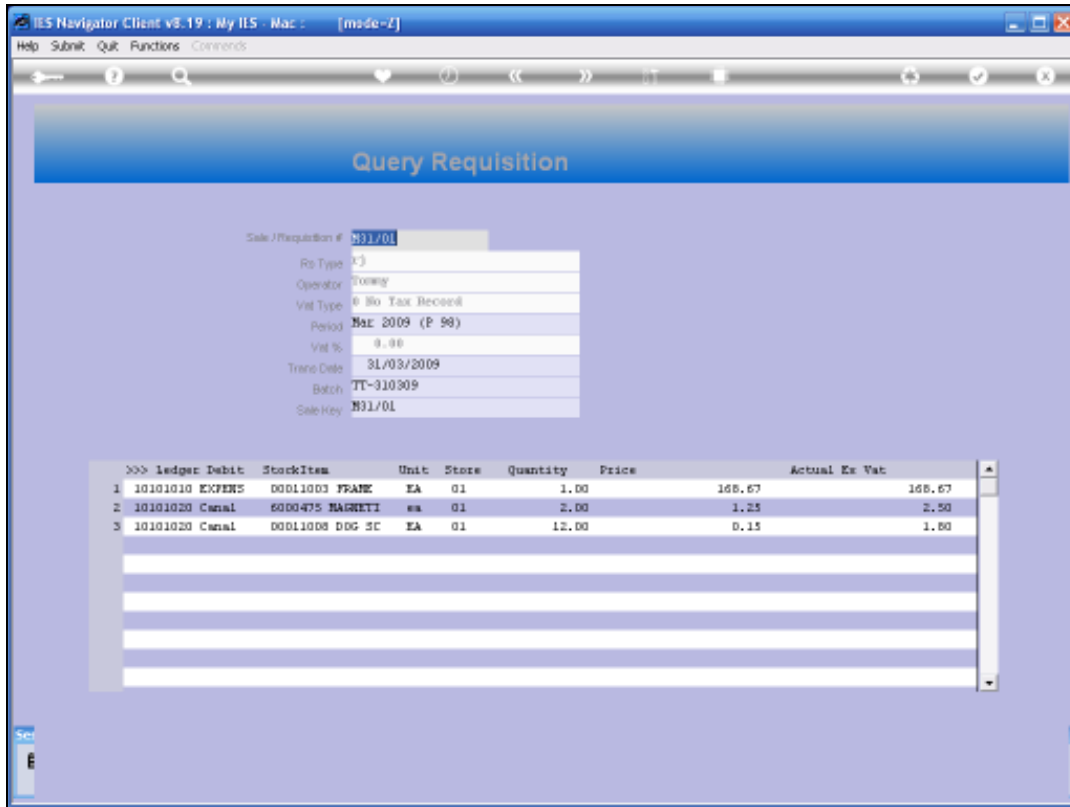


Slide 9
Slide notes:



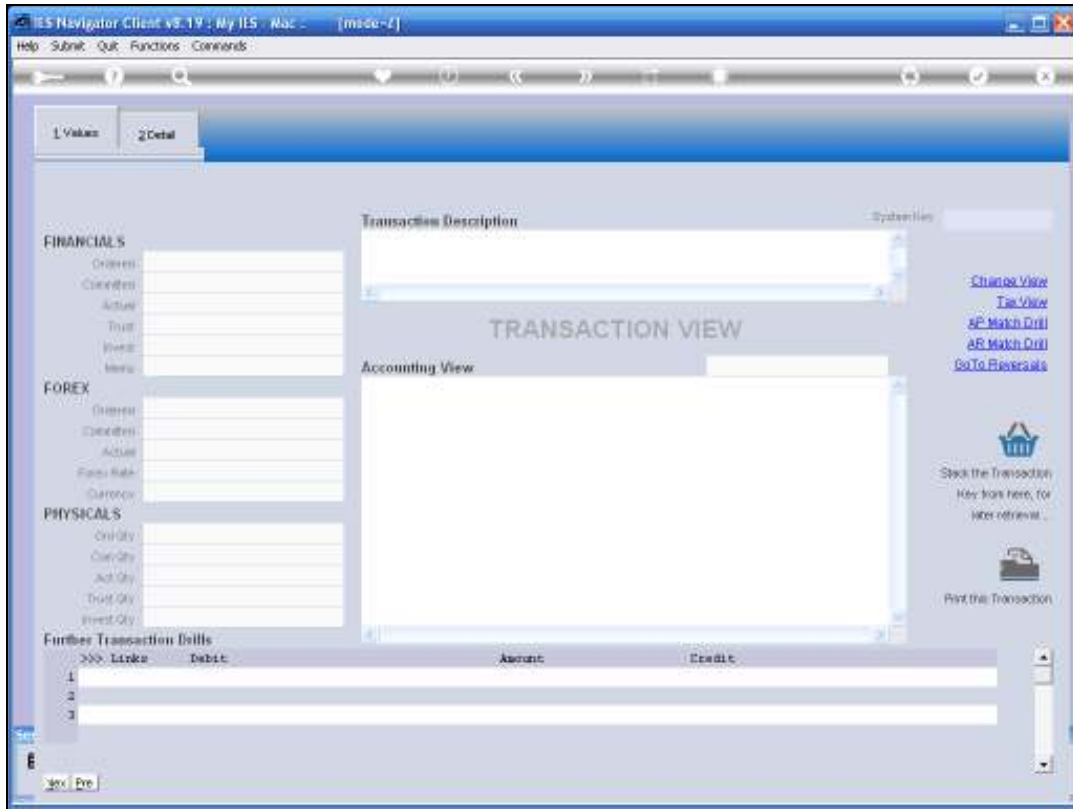
Slide 10

Slide notes:



Slide 11

Slide notes: The Requisition will show details of all Items issued on this Requisition number, and any Transaction entry that is listed can be drilled to find the detail.



Slide 12

Slide notes:

The screenshot displays the IIS Navigator Client interface. The main window title is 'IIS Navigator Client vs.19 : My IIS - Mac - [mode-1]'. The menu bar includes 'Help', 'Submit', 'Quit', 'Functions', and 'Comments'. The interface is divided into several sections:

- FINANCIALS:** A table with columns for 'Credit' and 'Debit'. Values include 0.00, 0.00, 168.67, 0.00, 0.00, and 0.00.
- FOREX:** A table with columns for 'Credit' and 'Debit'. Values include 0.00, 0.00, 0.00, and 0.00. A 'Foreign Rate' of 'LOCAL 11' is also shown.
- PHYSICALS:** A table with columns for 'Credit' and 'Debit'. Values include 0.00, 0.00, 1.00, 0.00, and 0.00.
- Transaction Description:** 'FRAME TENSION POST FERRELL FRONT', 'NEEDLE BAR P/MO.MA 1348 FOR', 'FISCHER SEMINO MACHINE'. System ID: '1106022346'.
- Accounting View:** A table with columns for 'Account' and 'Amount'.

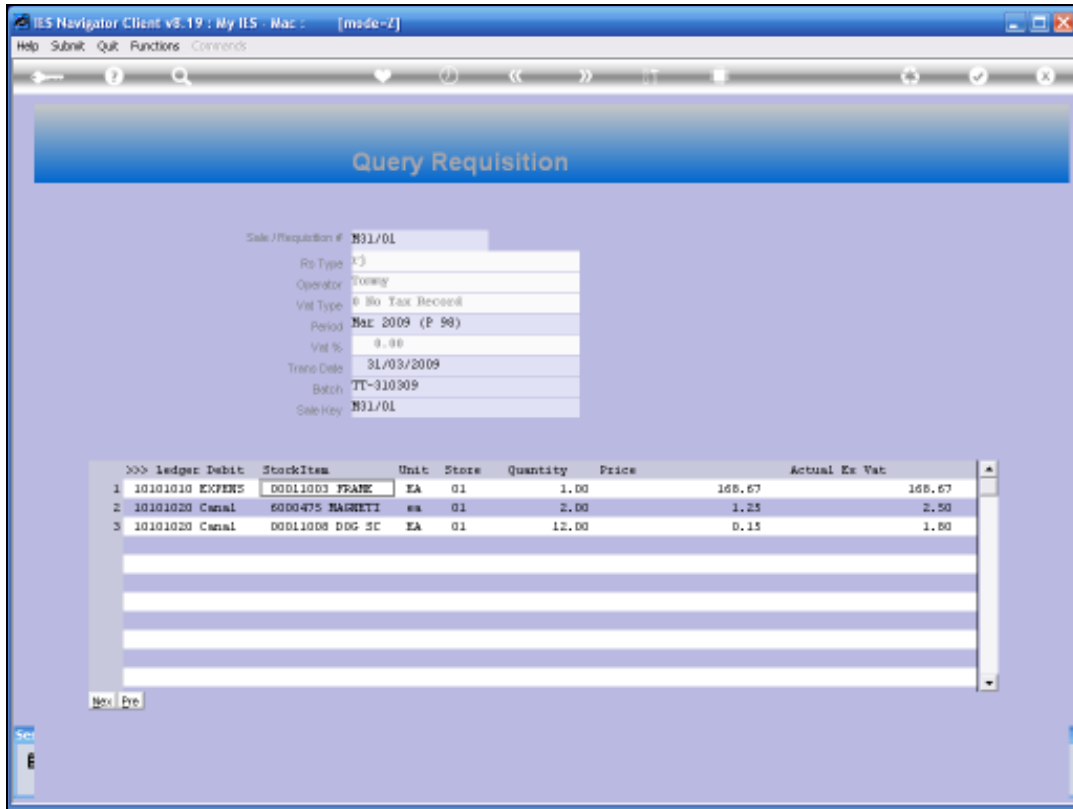
Account	Amount
10101010 EXPENSES: GENERAL	168.67
10000021 STORES CONTROL (3) : PRIVATE LEDGES	-168.67
IV 00011003-01 FRAME TENSION POST FERRELL FR	0.00
- Further Transaction Bills:** A table with columns for 'Link', 'Debit', 'Amount', and 'Credit'.

Link	Debit	Amount	Credit
1 1506022346	10101010 EXPENSES: GENERAL	168.67	00011003-01 FRAME TENSION POST FER

On the right side, there are buttons for 'Change View', 'Tax View', 'Go To Previous', and 'Go To Next'. There are also icons for 'Send the Transaction' and 'Print this Transaction'.

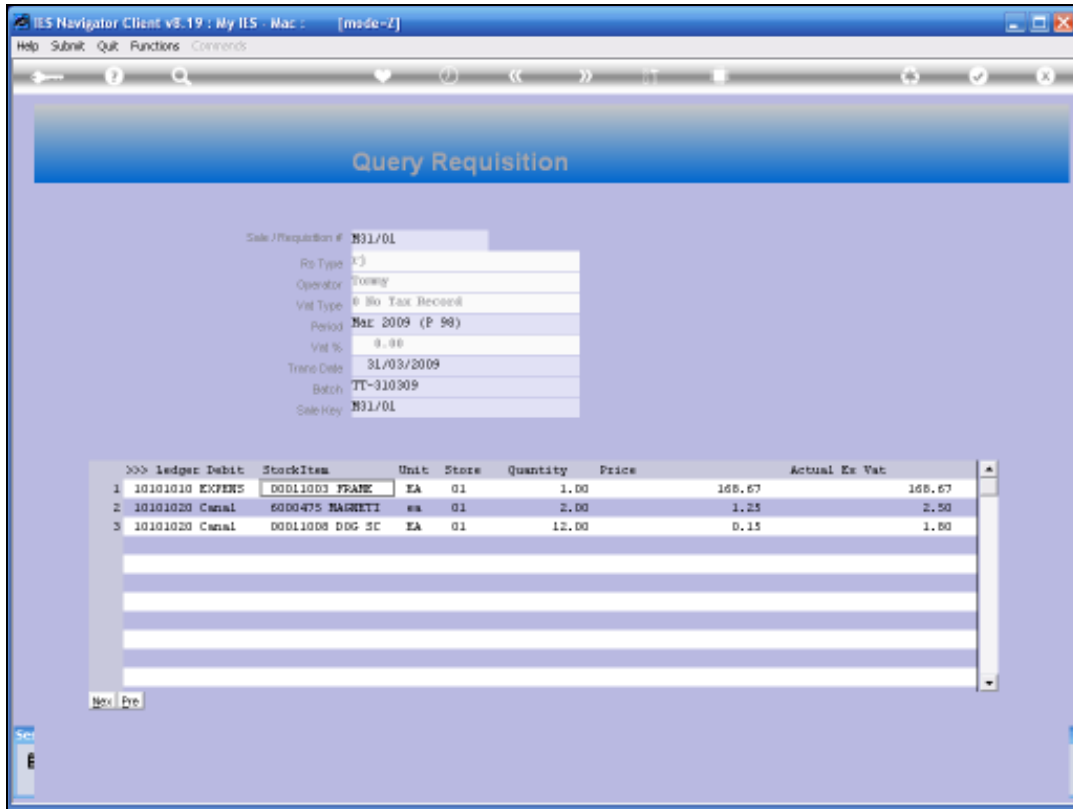
Slide 13

Slide notes:



Slide 14

Slide notes:



Slide 15

Slide notes: