



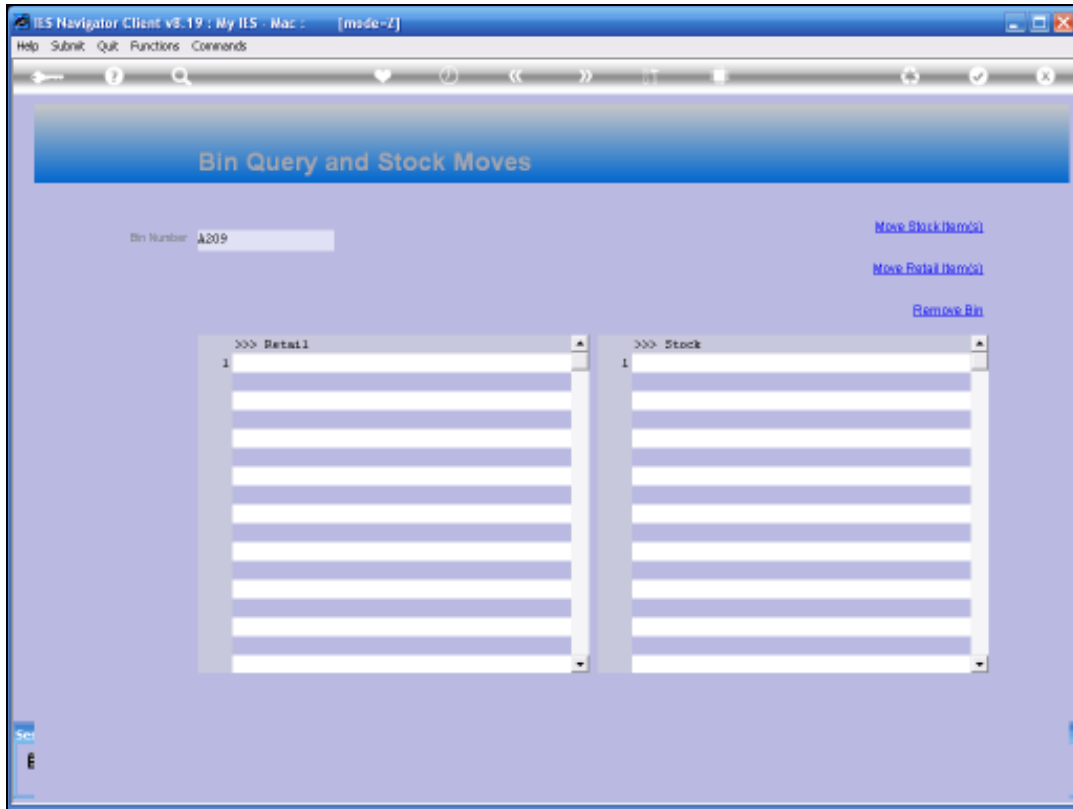
Slide 1

Slide notes: Stock Bins are like street addresses for Stock Items in the Stores and Warehouses, and while Bins can be numbered in any way that we want, they are typically numbered by row, shelf and position. Bin Numbers are recorded on the Stock Master and also on the Stock Items in the Stores, because an Item may be found at multiple Bins if we choose to organize it like that. The recording of the Bin Numbers against Stock Items are dealt with in other tutorials, whereas in this tutorial we are considering the Bin Query and Movement options, and the verification of Bin numbers.



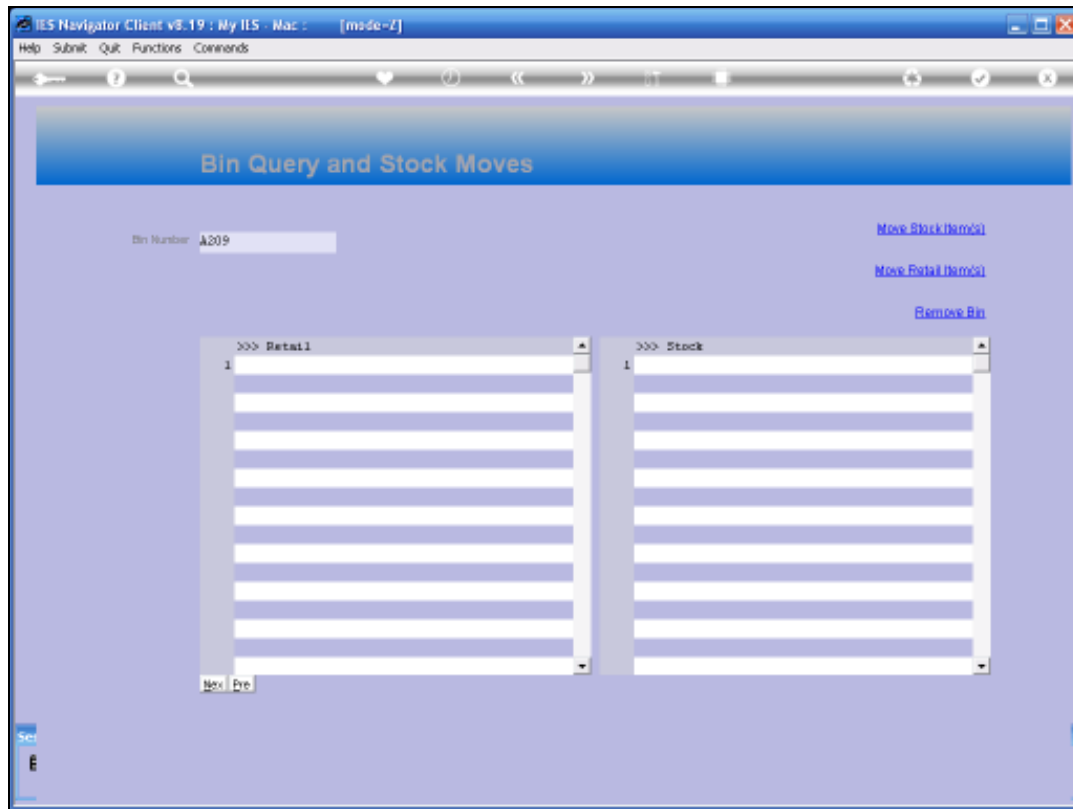
Slide 2

Slide notes:



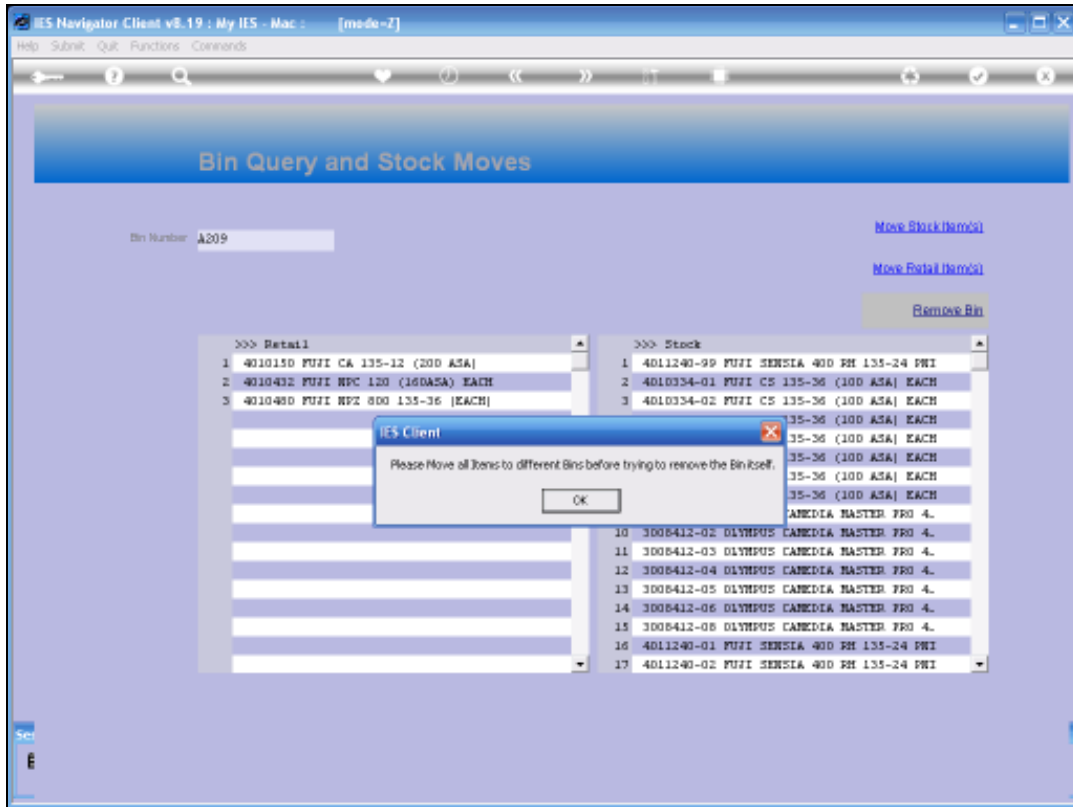
Slide 3

Slide notes:

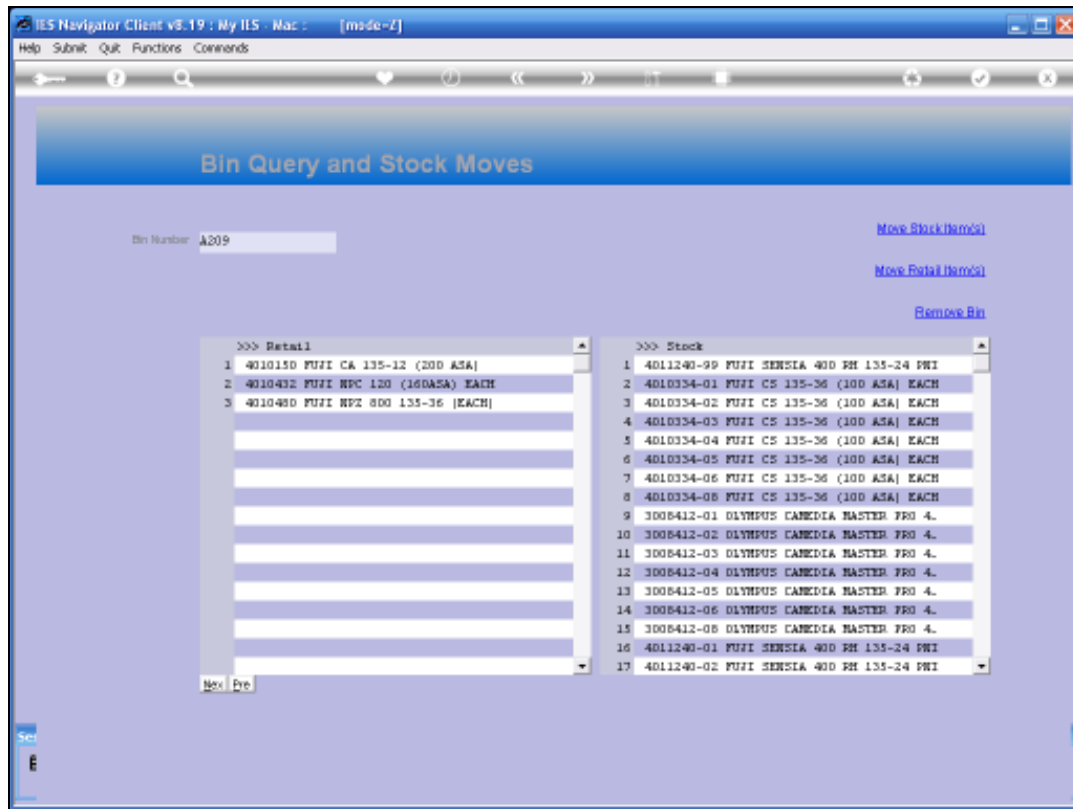


Slide 4

Slide notes: A Bin Number can be removed if there are no Stock Items that reference it, i.e. the Bin is empty.

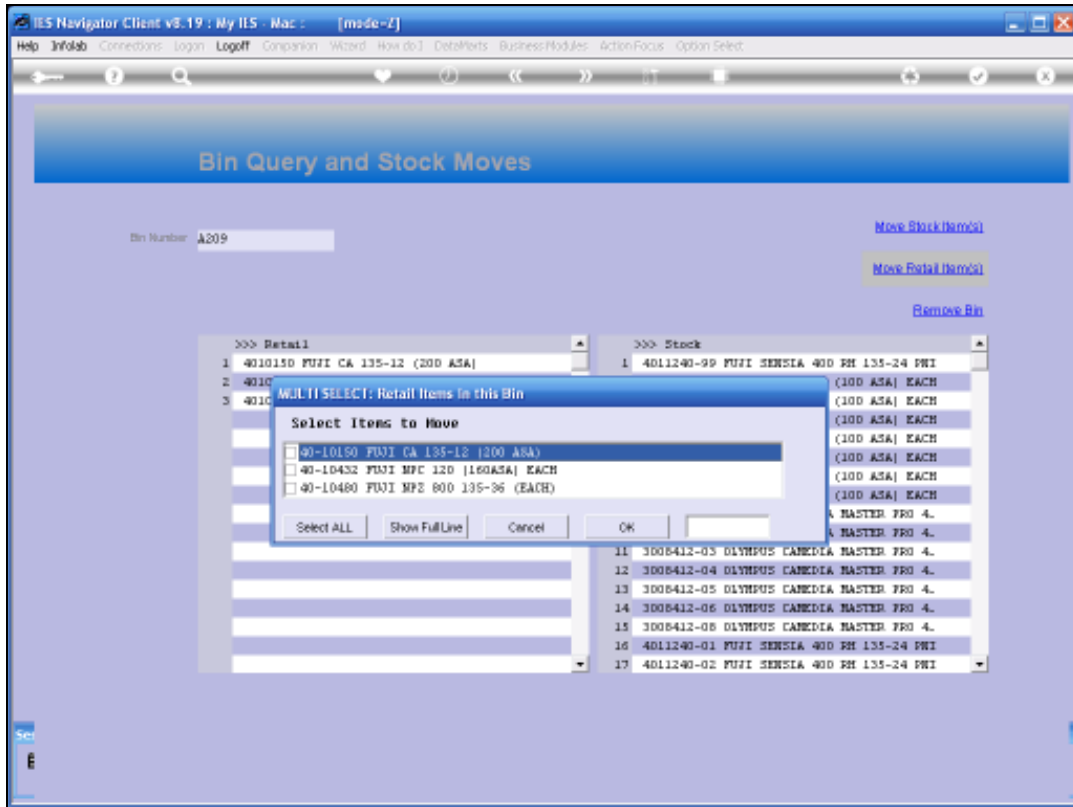


Slide 5
Slide notes:

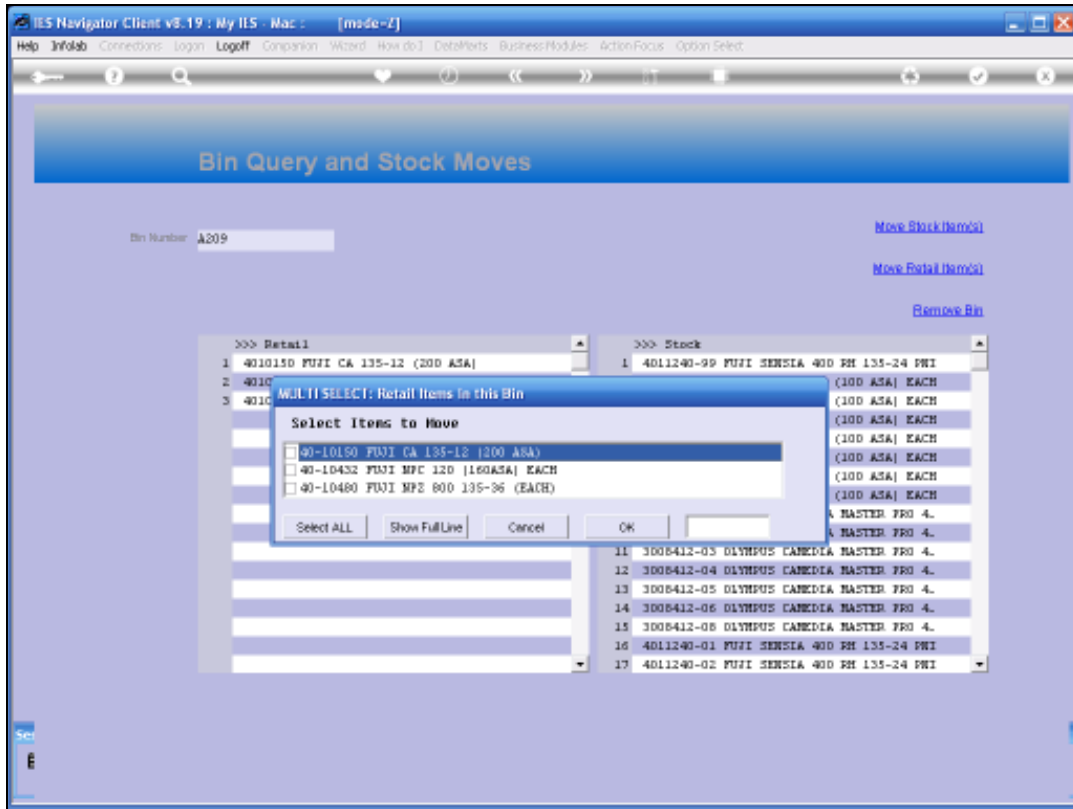


Slide 6

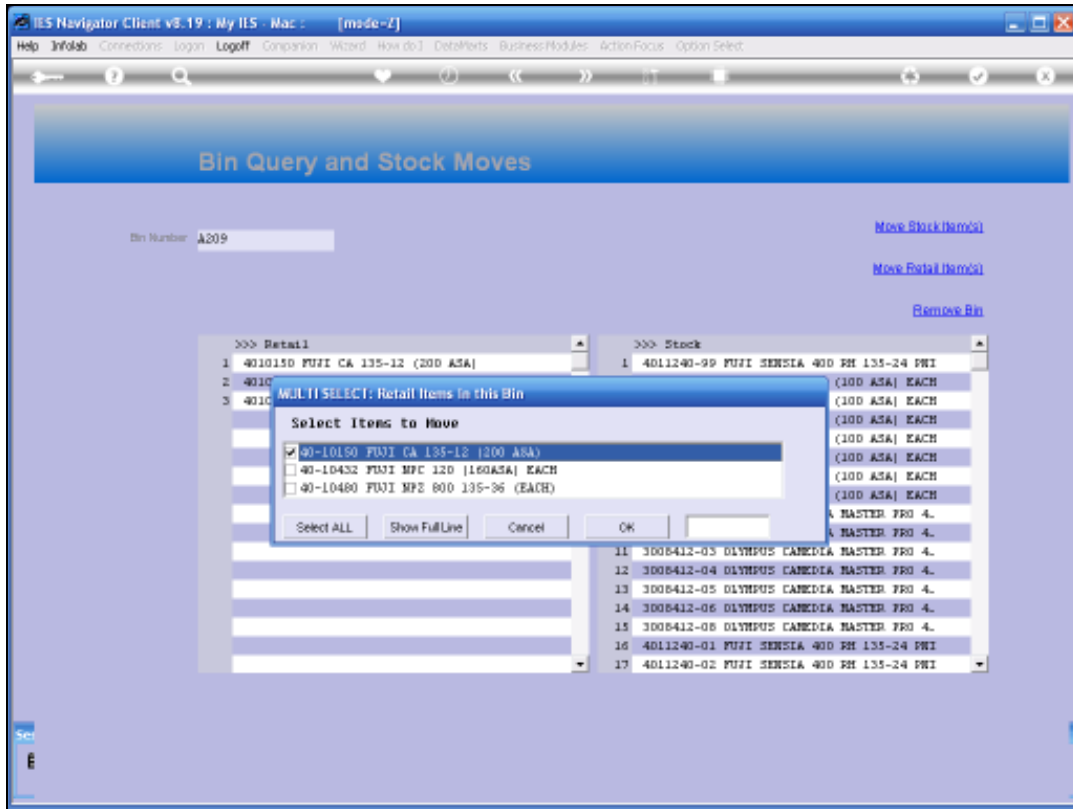
Slide notes: Both Retail and Stock management may use the Bins, and we may move Items from Retail or from Stock to other Bins when we re-organize a Warehouse or Store, or when we simply want to correct a mistake.



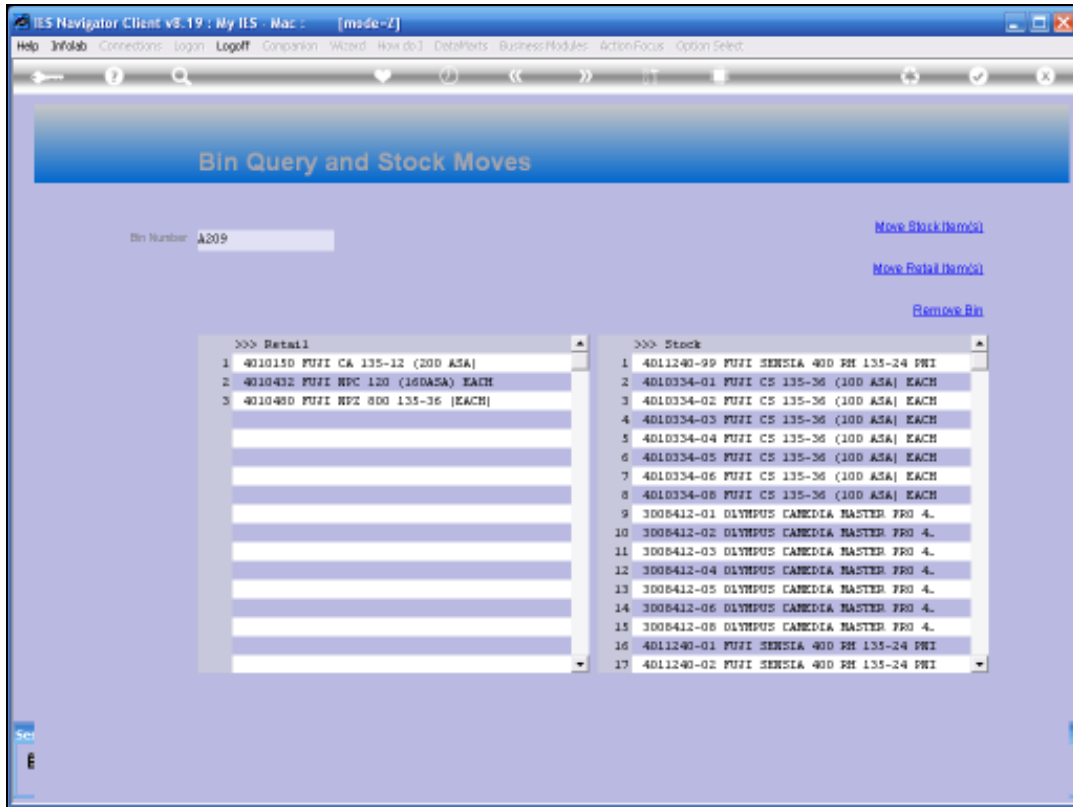
Slide 7
Slide notes:



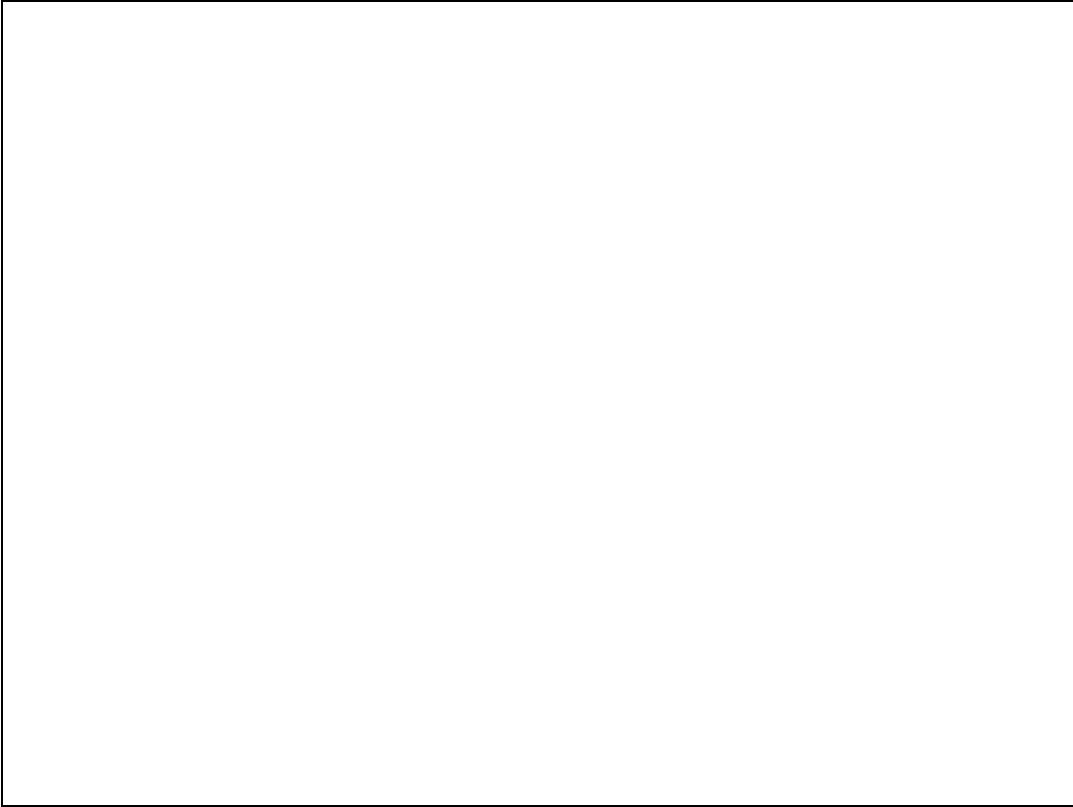
Slide 8
Slide notes:



Slide 9
Slide notes:

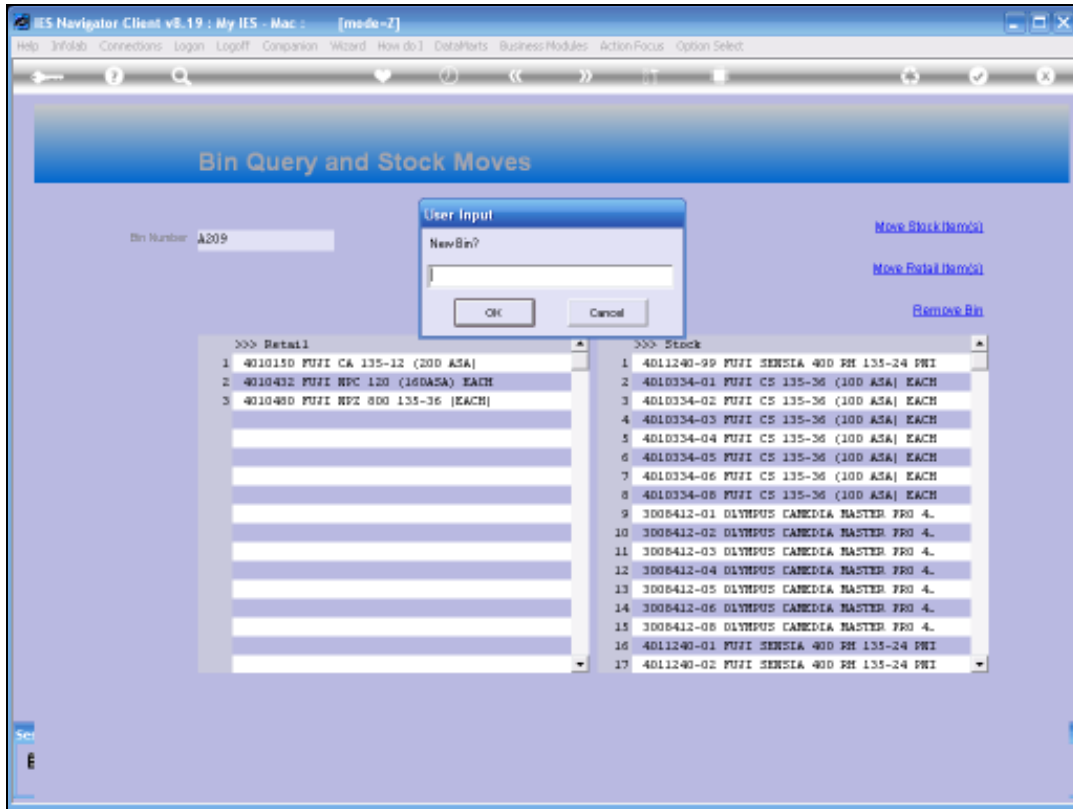


Slide 10
Slide notes:



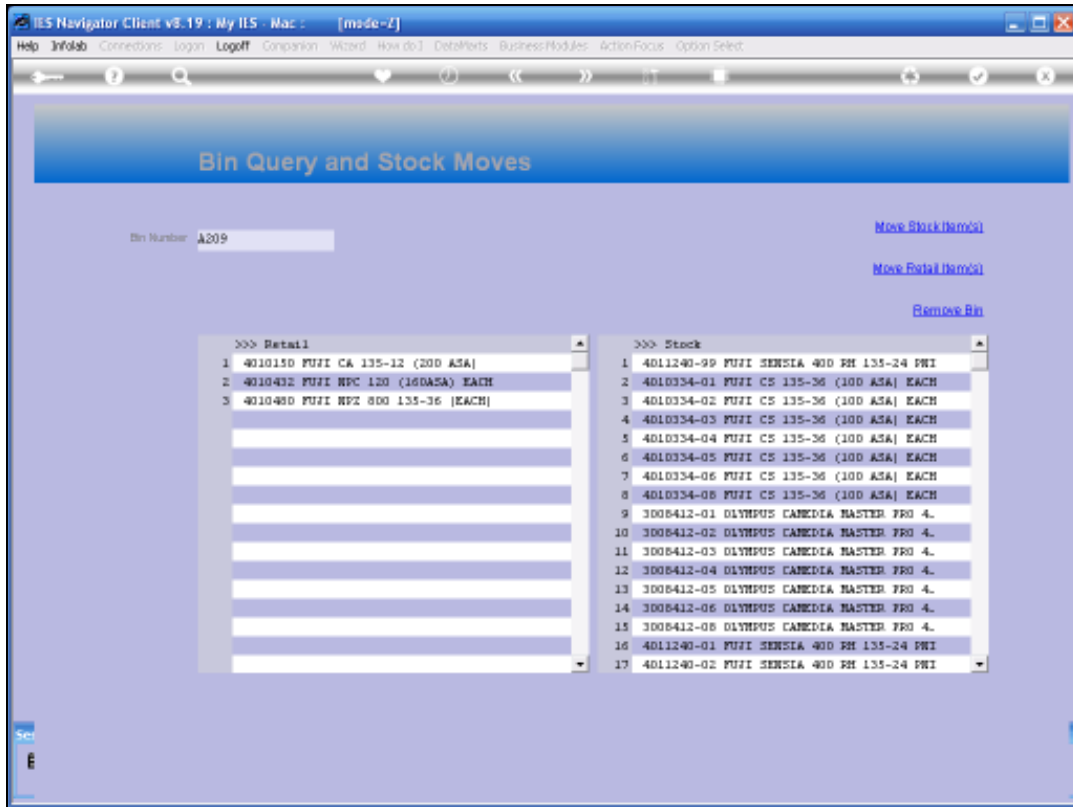
Slide 11

Slide notes:



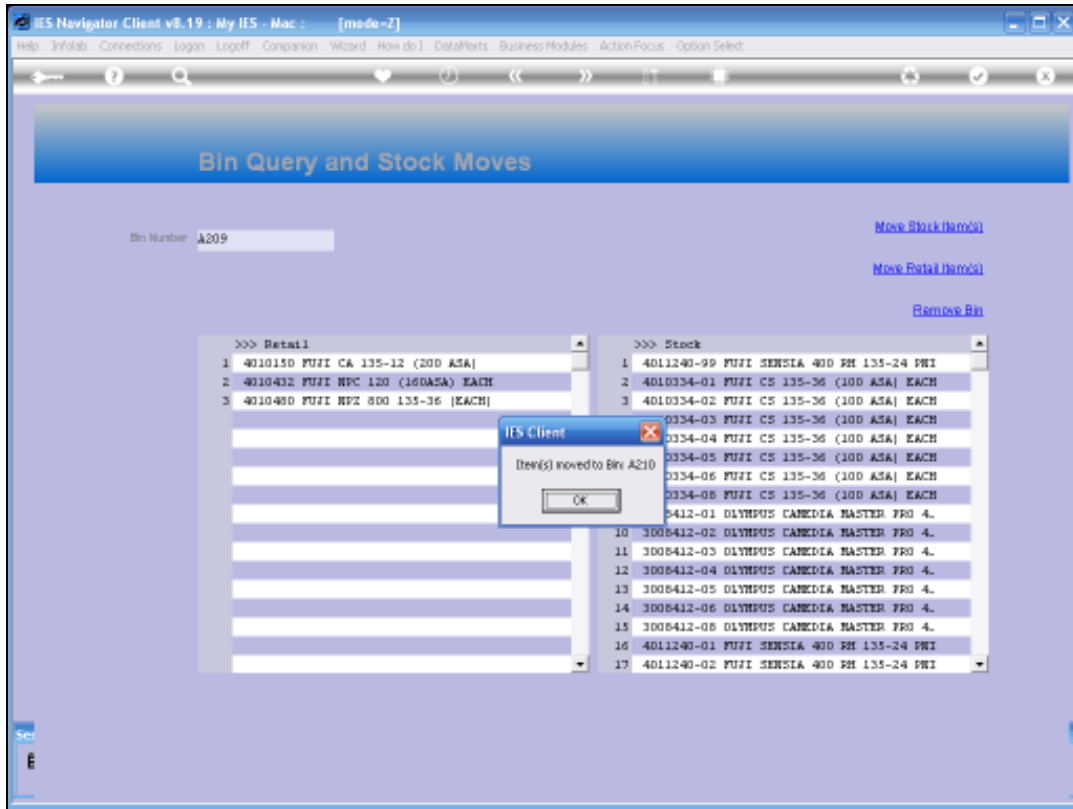
Slide 12

Slide notes:

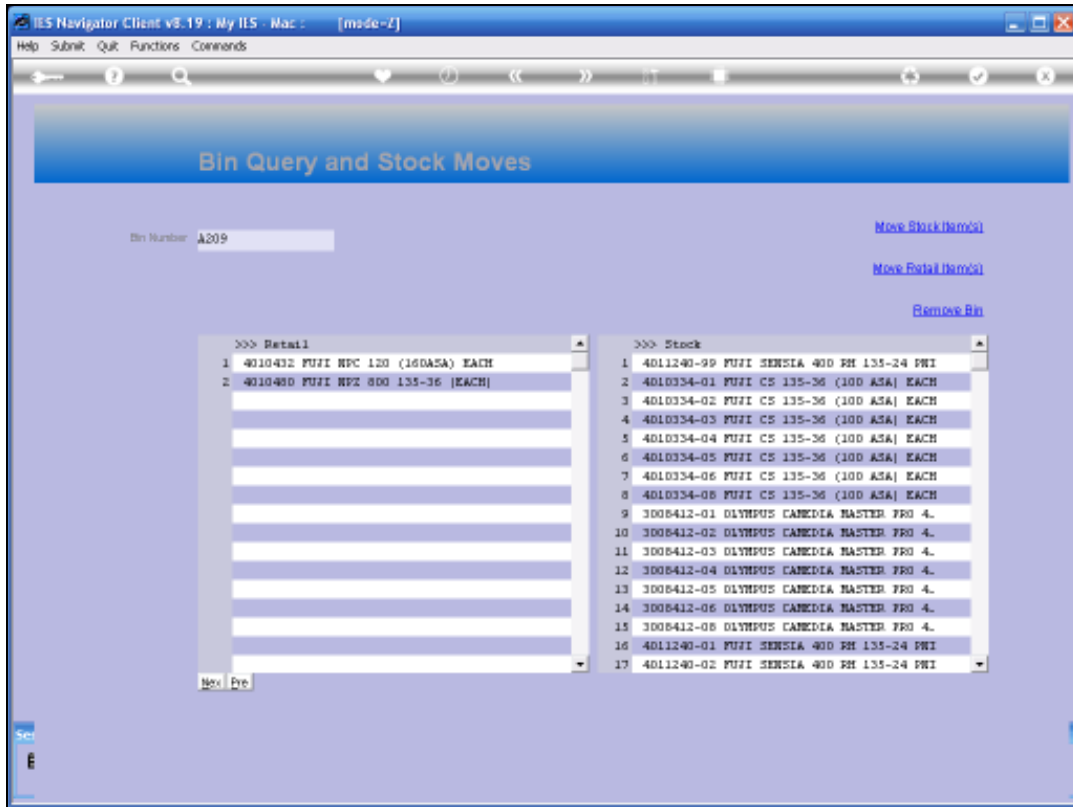


Slide 13

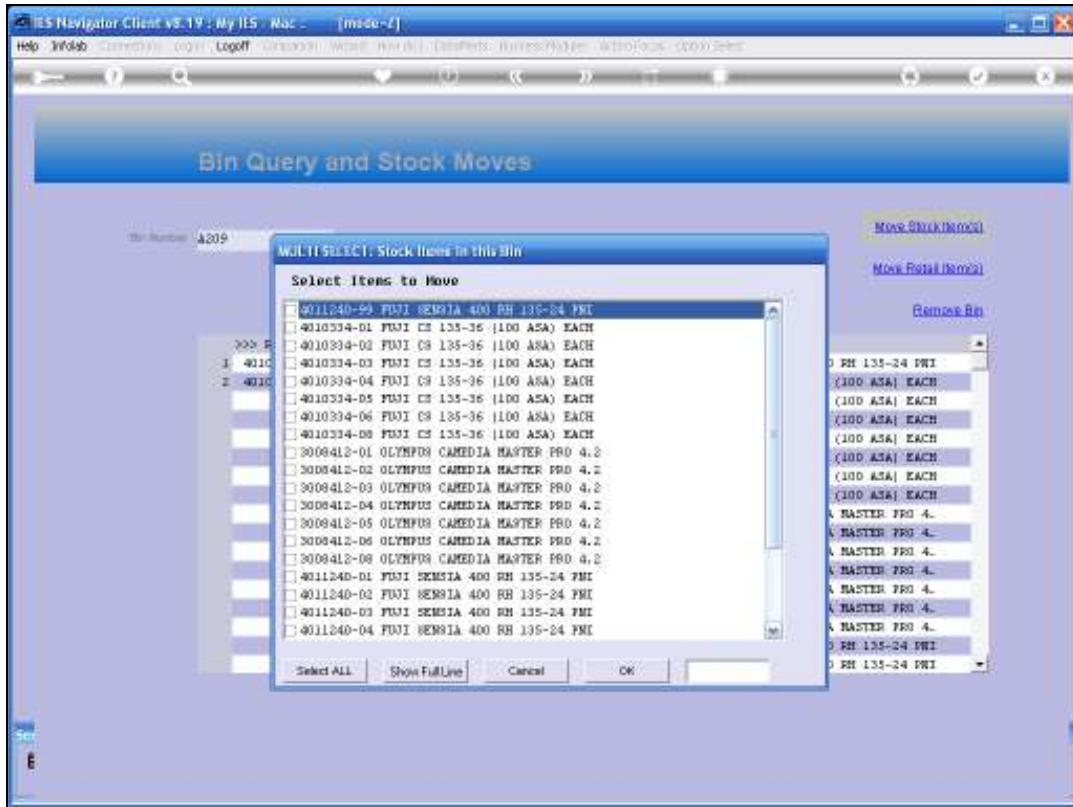
Slide notes:



Slide 14
Slide notes:

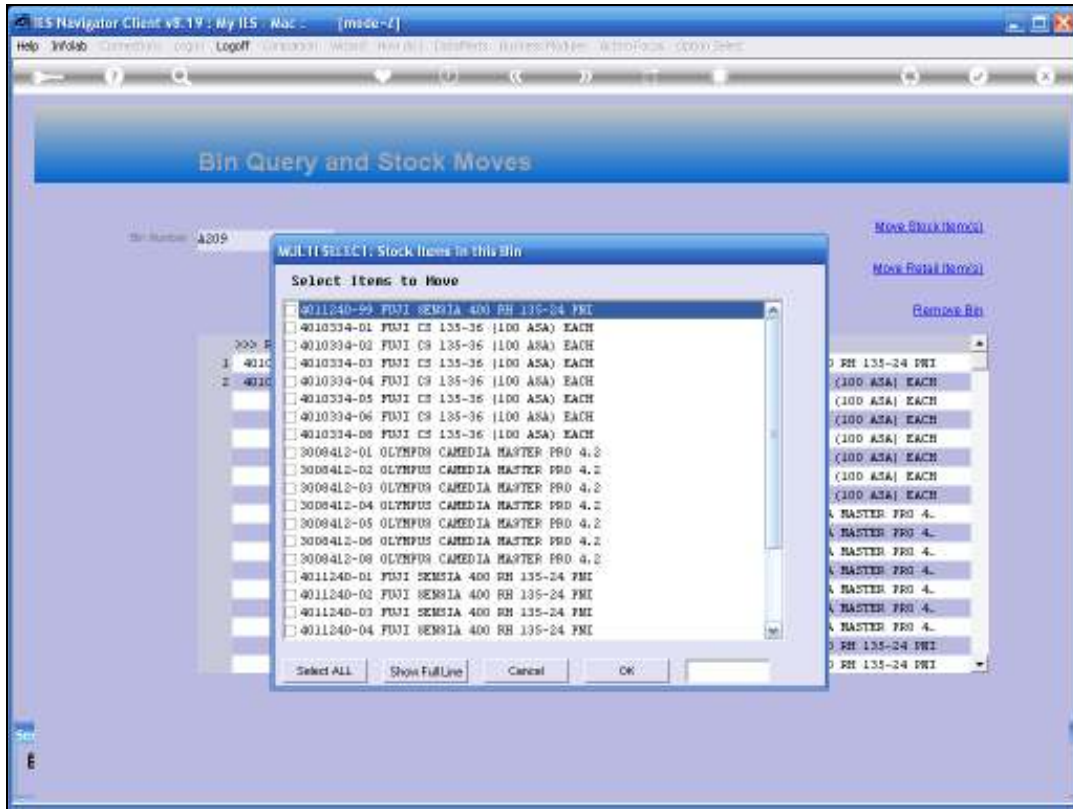


Slide 15
Slide notes:



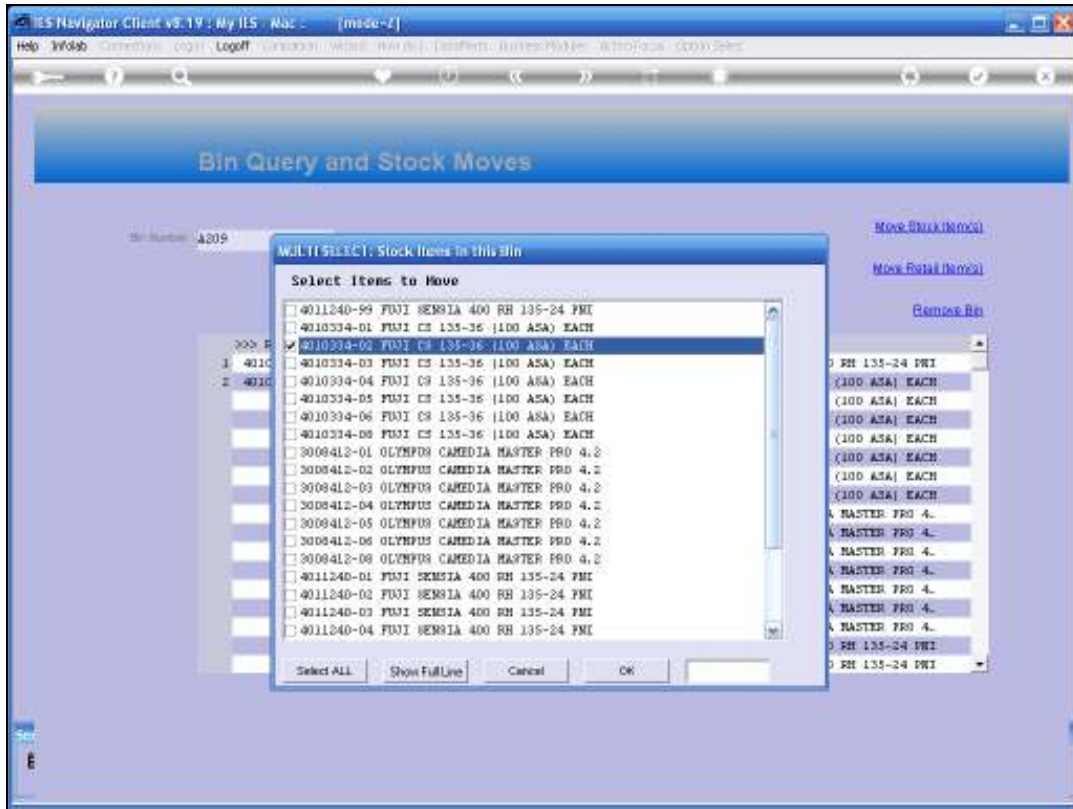
Slide 16

Slide notes:



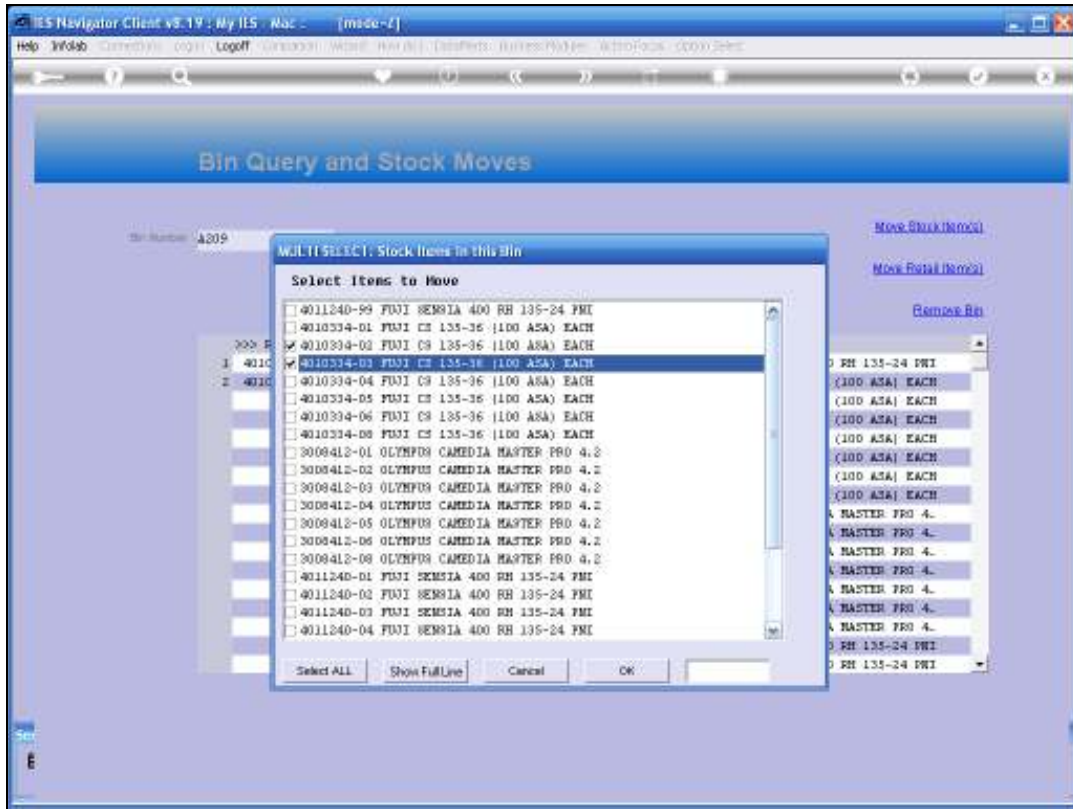
Slide 17

Slide notes:



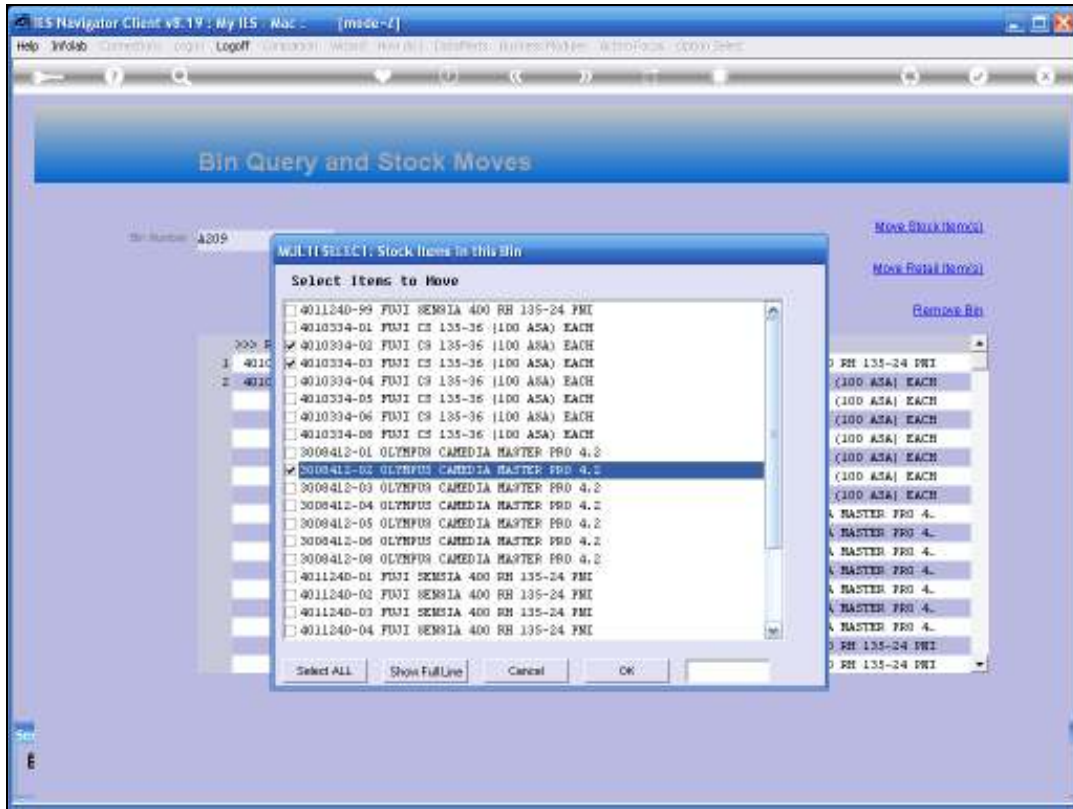
Slide 18

Slide notes:



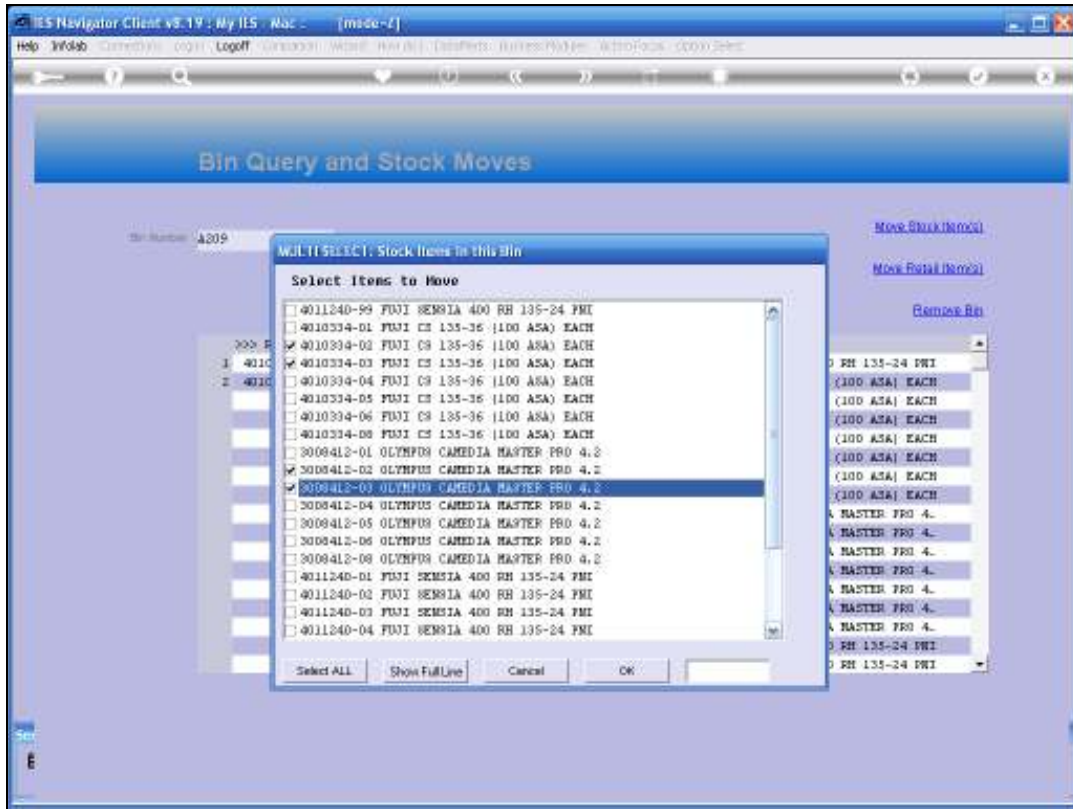
Slide 19

Slide notes:



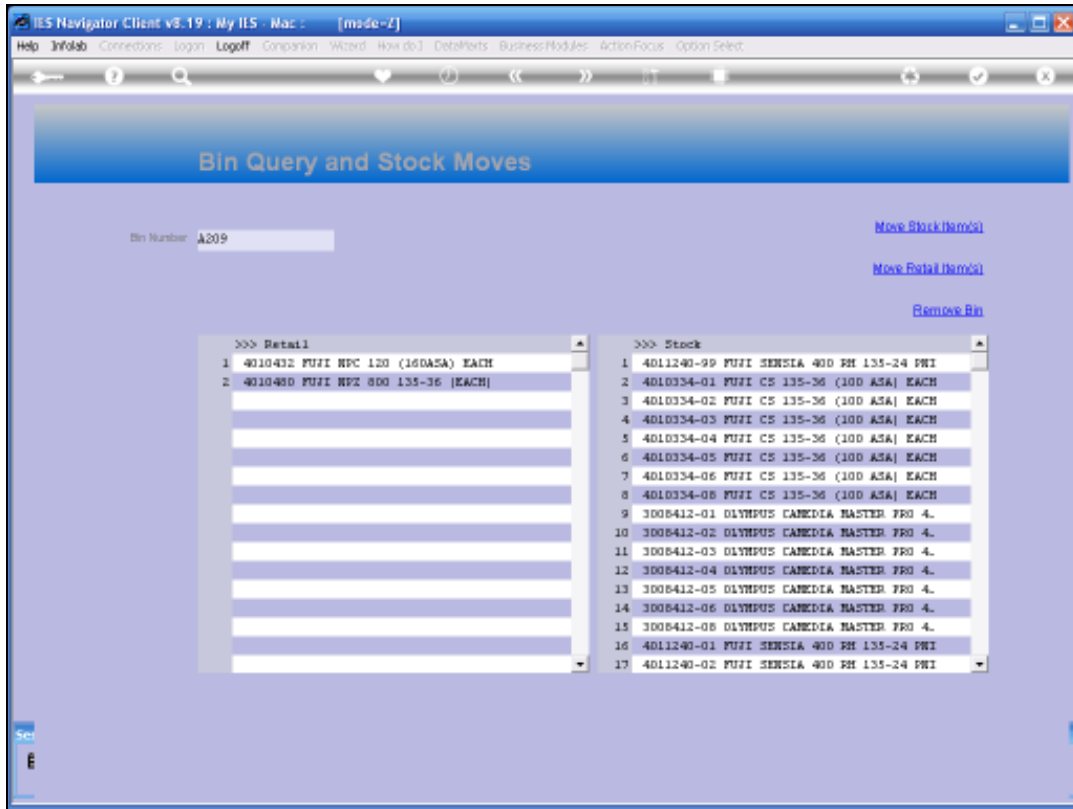
Slide 20

Slide notes:



Slide 21

Slide notes:



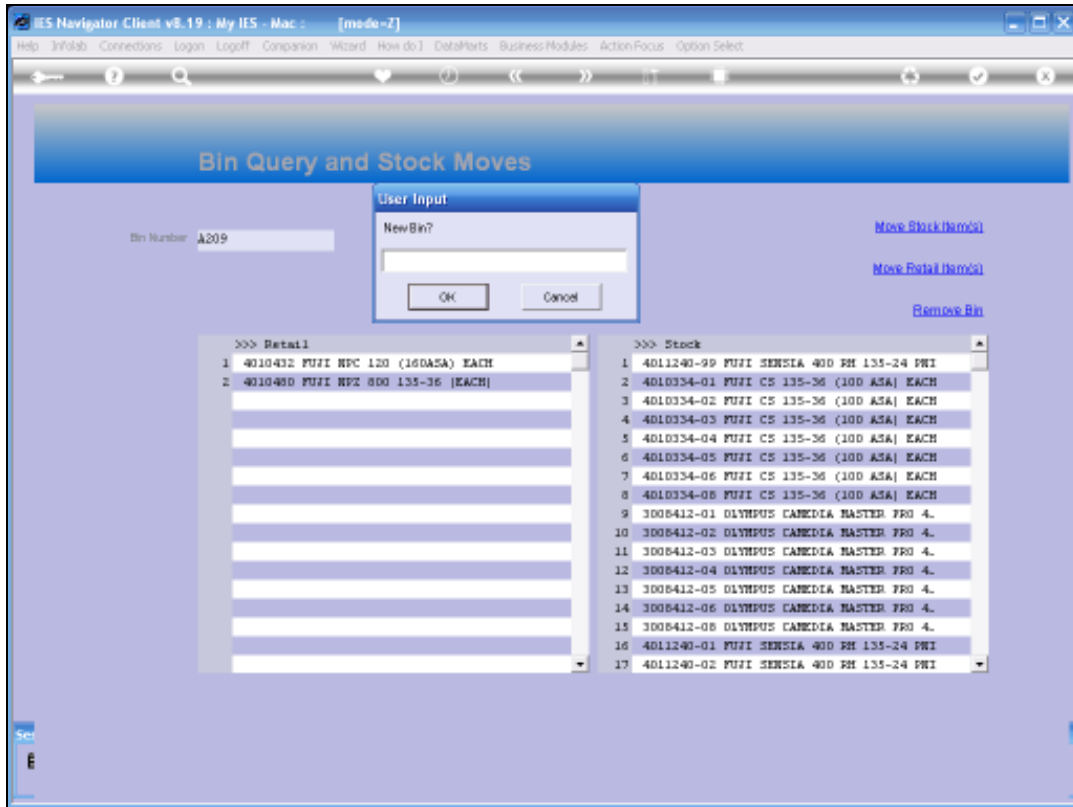
Slide 22

Slide notes:

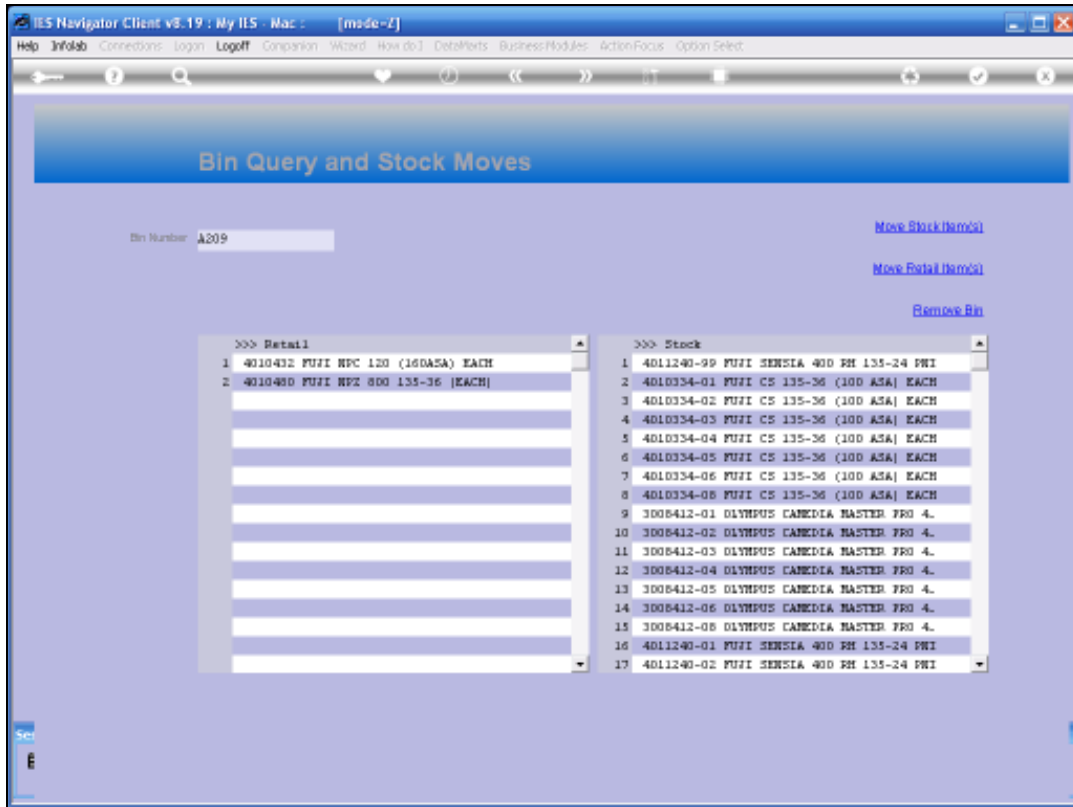


Slide 23

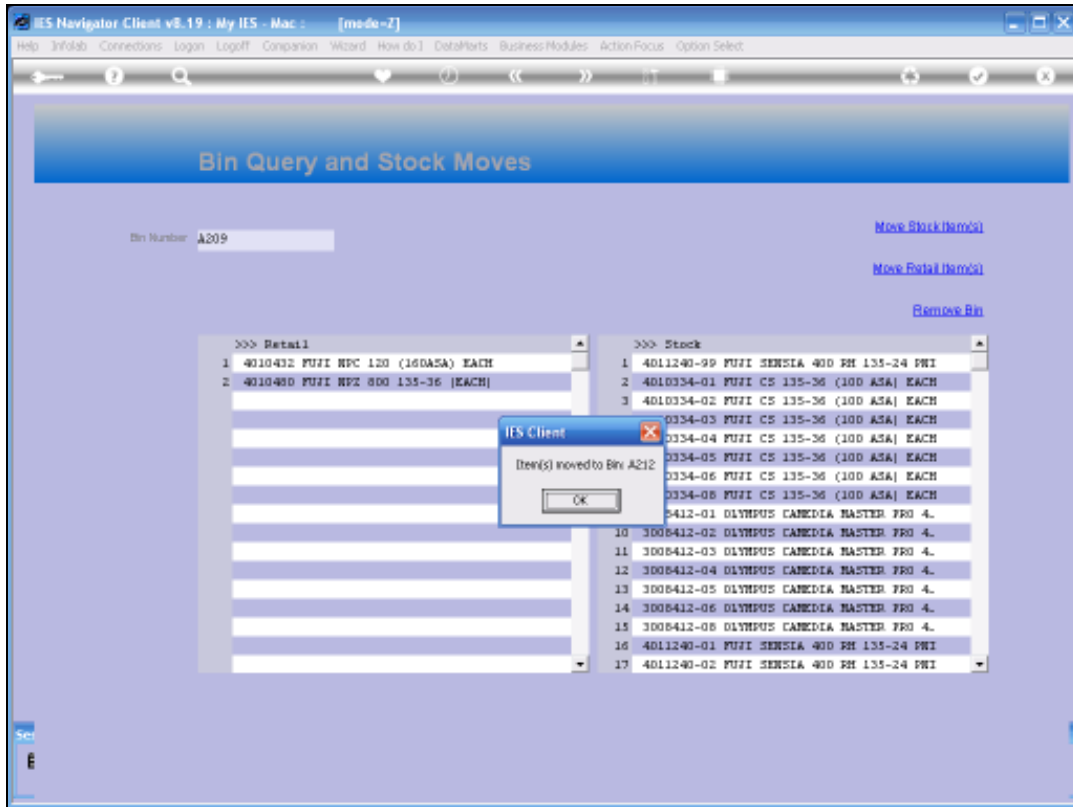
Slide notes:



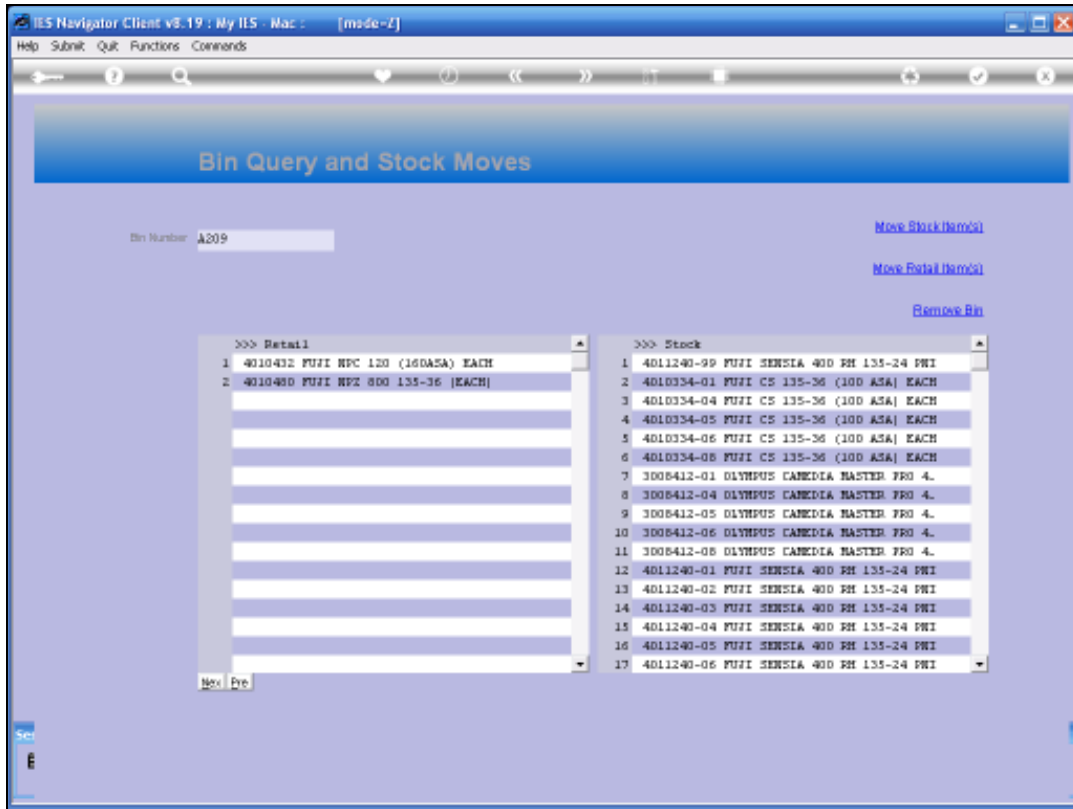
Slide 24
Slide notes:



Slide 25
Slide notes:

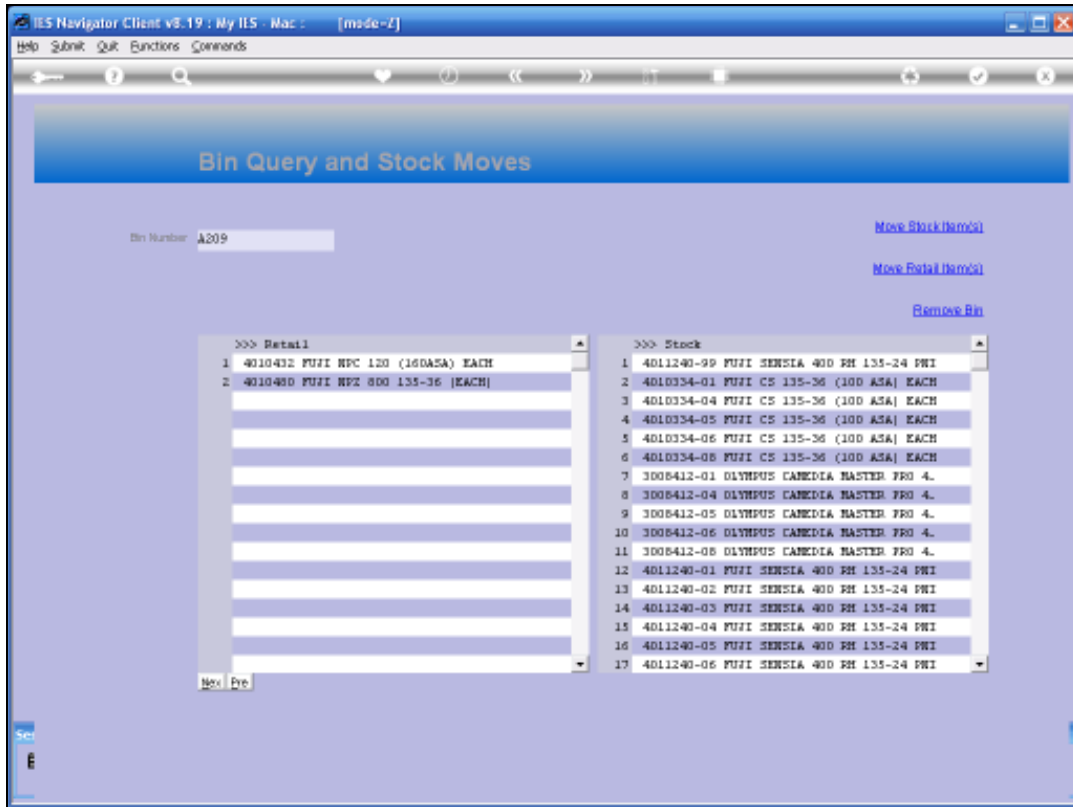


Slide 26
Slide notes:



Slide 27

Slide notes:



Slide 28

Slide notes:



Slide 29

Slide notes:



Slide 30

Slide notes: We also have a housekeeping function on the Bin Numbers, where the system will automatically build the latest Bin Number index. First it removes all the Bin references, and then reconstructs all Bin Numbers from the latest information on the Stock Catalogue.



Slide 31

Slide notes:



Slide 32
Slide notes:



Slide 33

Slide notes: