

Slide 1

Slide notes: In this tutorial we are going to look at the Stores Master, but before we get there it is useful to consider a Stock Item master.

The screenshot shows a web application window titled "IES Navigator Client v8.19.1 My IIS - Mac". The interface includes a navigation menu with tabs for "1 Main", "2 Ordering", "3 Stores", "4 Indicators", and "5 Metrics". The "3 Stores" tab is active, displaying a "STORES MANAGEMENT" section. Below this, there are links for "Auto Complete Stores", "Drill PO Costs", and "Fill 2 Week Sales". A table lists store details with the following columns: Stores, Op, Profit, Pricing, Minimum, Maximum, Re-Order, Re-Ord Qty, and 2 Week Sales. The table contains 10 rows of data, all with values of 0.00 for the last three columns. At the bottom left, there is a "Set" button and a keyboard shortcut row: "Yes", "Print", "Add", "Insert", "Edit", "Delete".

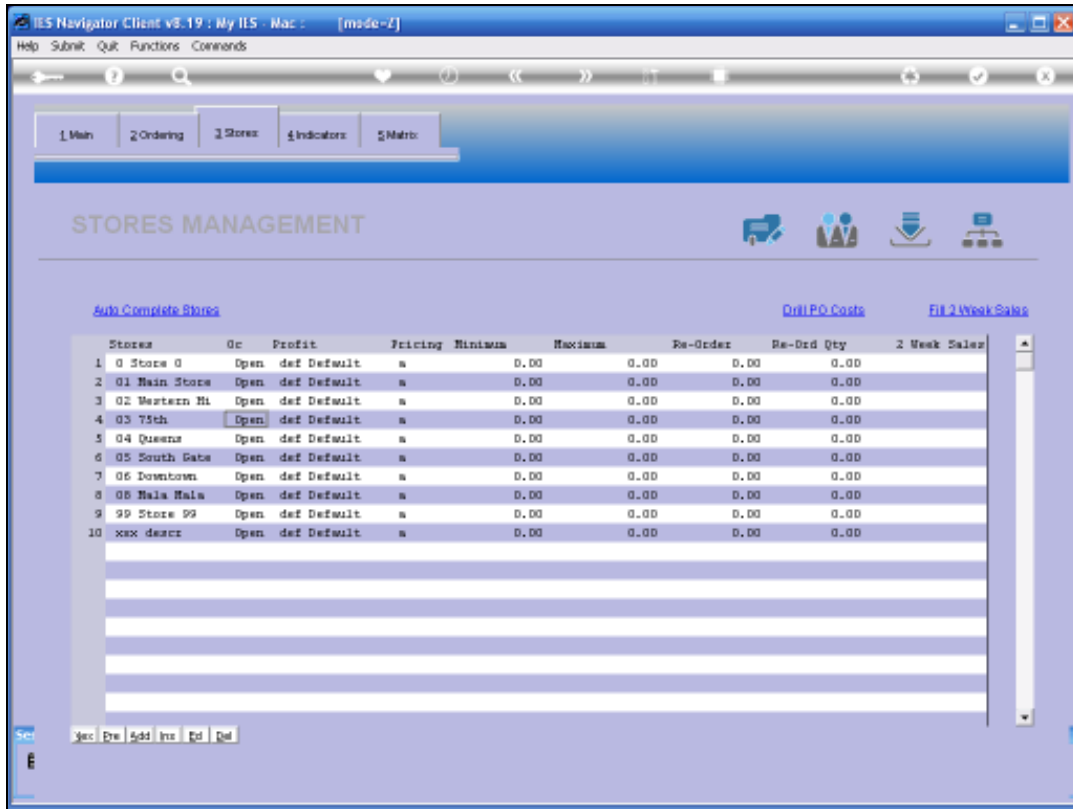
Stores	Op	Profit	Pricing	Minimum	Maximum	Re-Order	Re-Ord Qty	2 Week Sales
1 0 Store 0	Open	def Default	a	0.00	0.00	0.00	0.00	0.00
2 01 Main Store	Open	def Default	a	0.00	0.00	0.00	0.00	0.00
3 02 Western Hi	Open	def Default	a	0.00	0.00	0.00	0.00	0.00
4 03 75th	Open	def Default	a	0.00	0.00	0.00	0.00	0.00
5 04 Queens	Open	def Default	a	0.00	0.00	0.00	0.00	0.00
6 05 South Gate	Open	def Default	a	0.00	0.00	0.00	0.00	0.00
7 06 Downtown	Open	def Default	a	0.00	0.00	0.00	0.00	0.00
8 08 Main Main	Open	def Default	a	0.00	0.00	0.00	0.00	0.00
9 99 Store 99	Open	def Default	a	0.00	0.00	0.00	0.00	0.00
10 xxx deacr	Open	def Default	a	0.00	0.00	0.00	0.00	0.00

Slide 2
Slide notes:

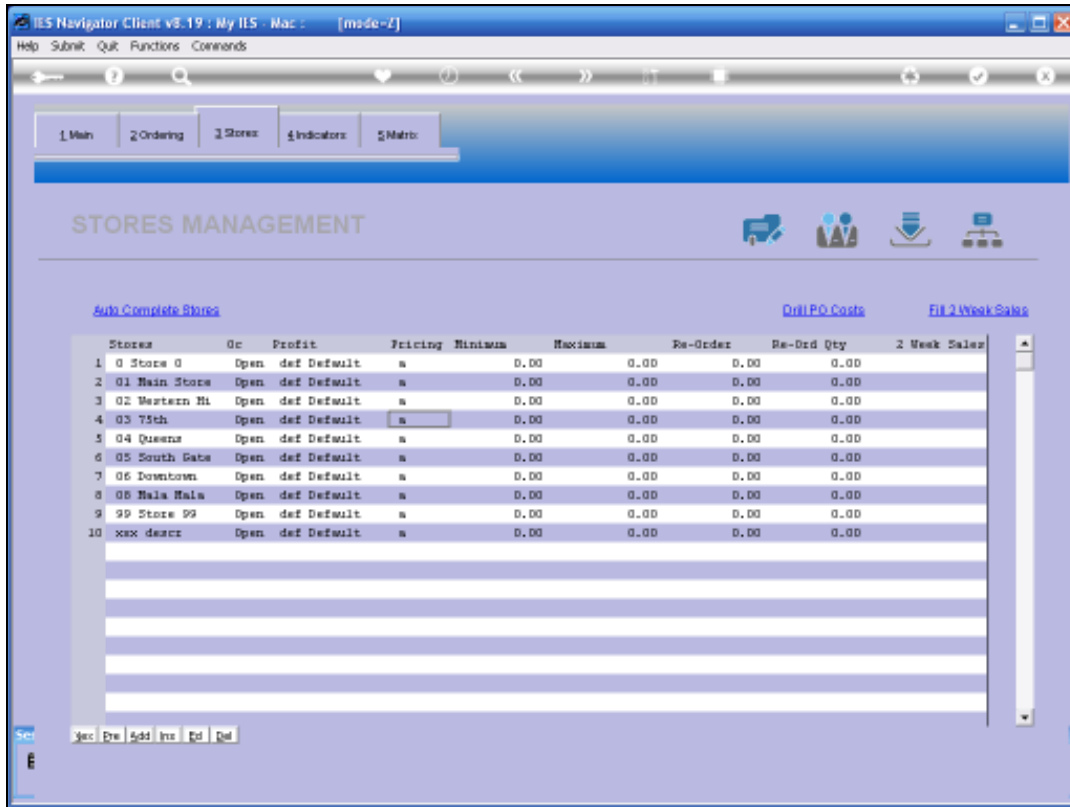
The screenshot shows a web application window titled "IES Navigator Client v8.19.19 : My IIS - Mac". The interface includes a navigation menu with tabs for "1 Main", "2 Ordering", "3 Stores", "4 Indicators", and "5 Metrics". The "3 Stores" tab is active, displaying a "STORES MANAGEMENT" section. Below this, there are links for "Auto Complete Stores", "Drill PO Costs", and "Fill 2 Week Sales". A table lists store details with the following columns: Stores, Op, Profit, Pricing, Minimum, Maximum, Re-Order, Re-Ord Qty, and 2 Week Sales. The table contains 10 rows of data, with the first row highlighted. At the bottom of the table, there is a toolbar with buttons for "Set", "Yes", "No", "Add", "Inv", "Ed", and "Del".

Stores	Op	Profit	Pricing	Minimum	Maximum	Re-Order	Re-Ord Qty	2 Week Sales
1 0 Store 0	Open	def Default	a	0.00	0.00	0.00	0.00	0.00
2 01 Main Store	Open	def Default	a	0.00	0.00	0.00	0.00	0.00
3 02 Western Hi	Open	def Default	a	0.00	0.00	0.00	0.00	0.00
4 03 75th	Open	def Default	a	0.00	0.00	0.00	0.00	0.00
5 04 Queens	Open	def Default	a	0.00	0.00	0.00	0.00	0.00
6 05 South Gate	Open	def Default	a	0.00	0.00	0.00	0.00	0.00
7 06 Downtown	Open	def Default	a	0.00	0.00	0.00	0.00	0.00
8 08 Main Main	Open	def Default	a	0.00	0.00	0.00	0.00	0.00
9 99 Store 99	Open	def Default	a	0.00	0.00	0.00	0.00	0.00
10 xxx deacr	Open	def Default	a	0.00	0.00	0.00	0.00	0.00

Slide 3
Slide notes:



Slide 4
Slide notes:



Slide 5

Slide notes: On this Stock Item Master we can see line entries for various Stores, each with a setting for Open / Closed, Profit Type, Pricing Type and Stocking levels. Now imagine if we have a Stock Catalogue with 40,000 Stock Items, and we want to change the properties for one of the Stores, or even insert a new Store that we have opened. That would be a huge task, because if we need to go to each Stock Item to make the change, then that would really be a lot of work. Fortunately, the Stores Master has a wizard to perform some of this work for us automatically. So let us go there and have a look.



Slide 6
Slide notes:



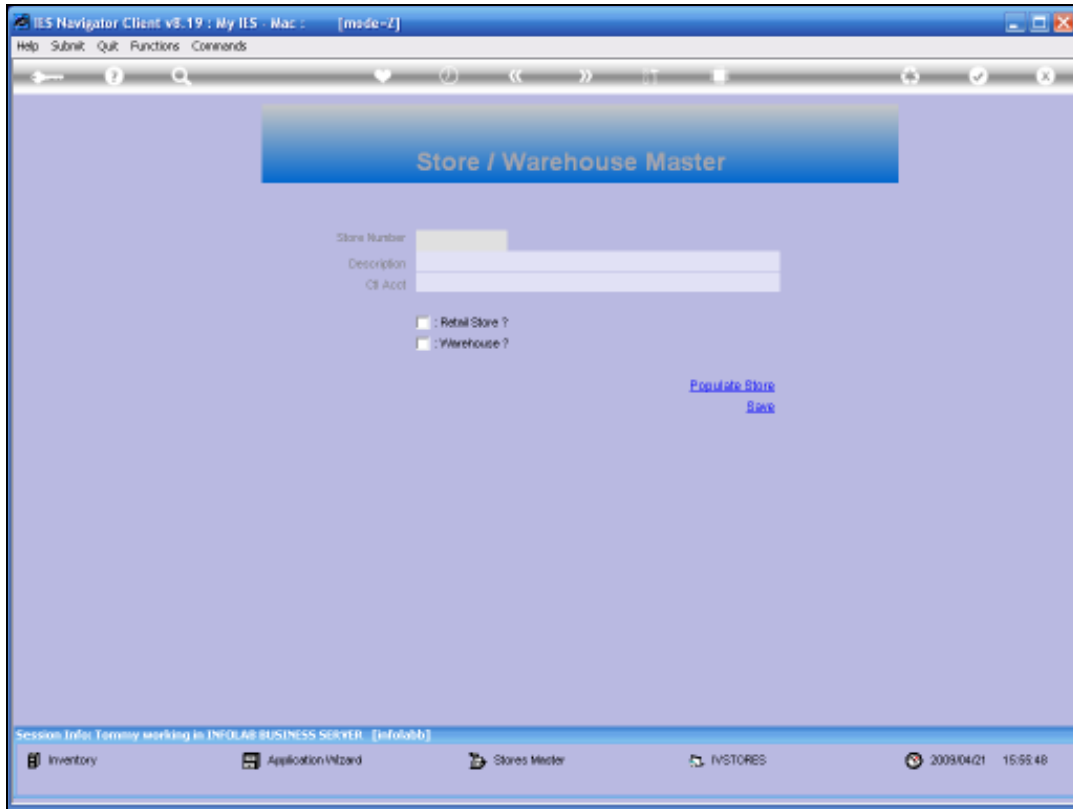
Slide 7

Slide notes:

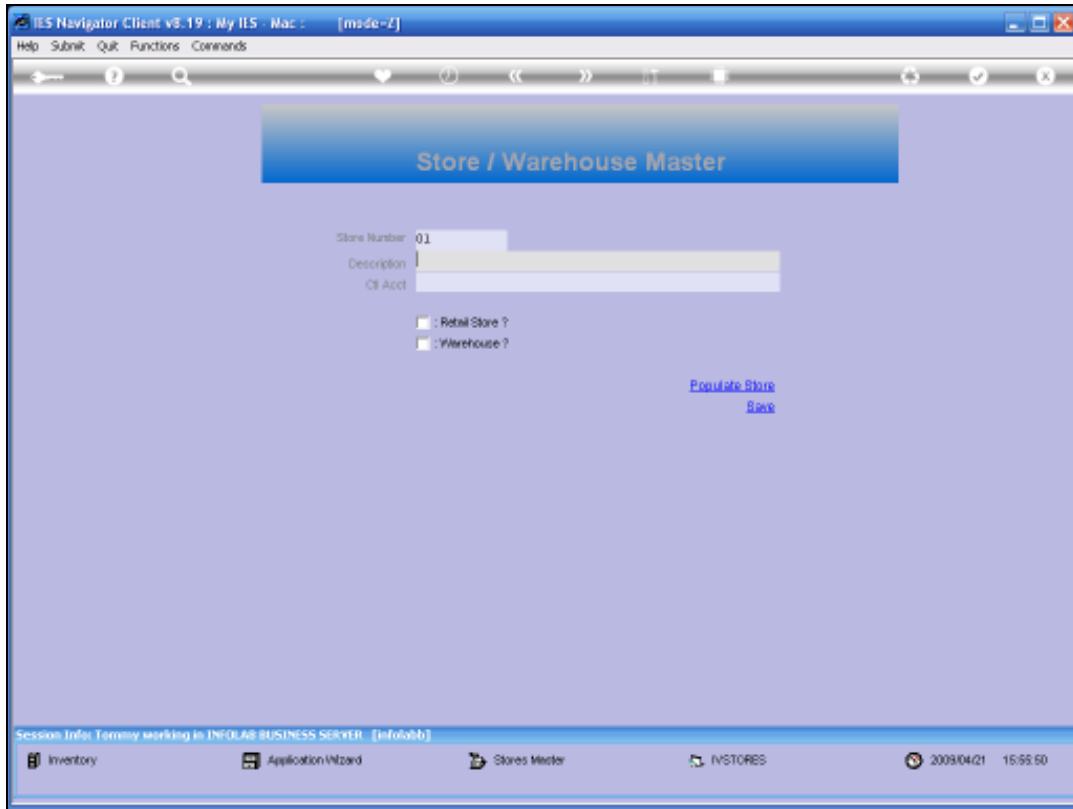


Slide 8

Slide notes:

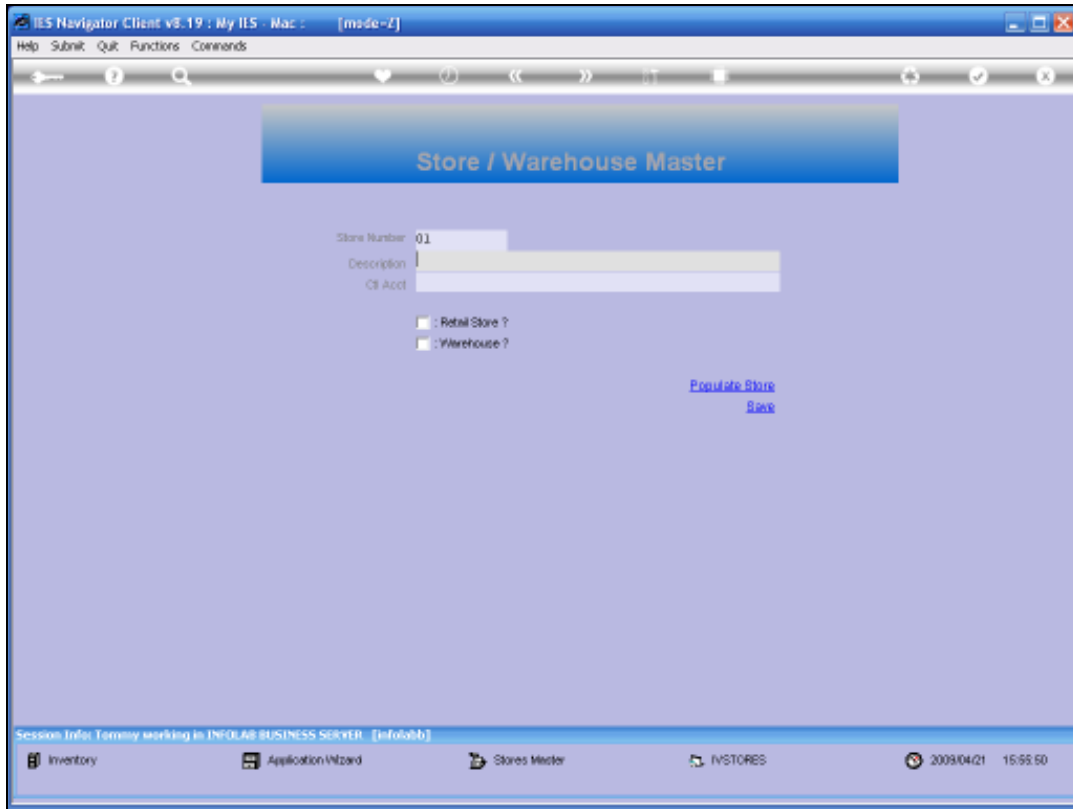


Slide 9
Slide notes:



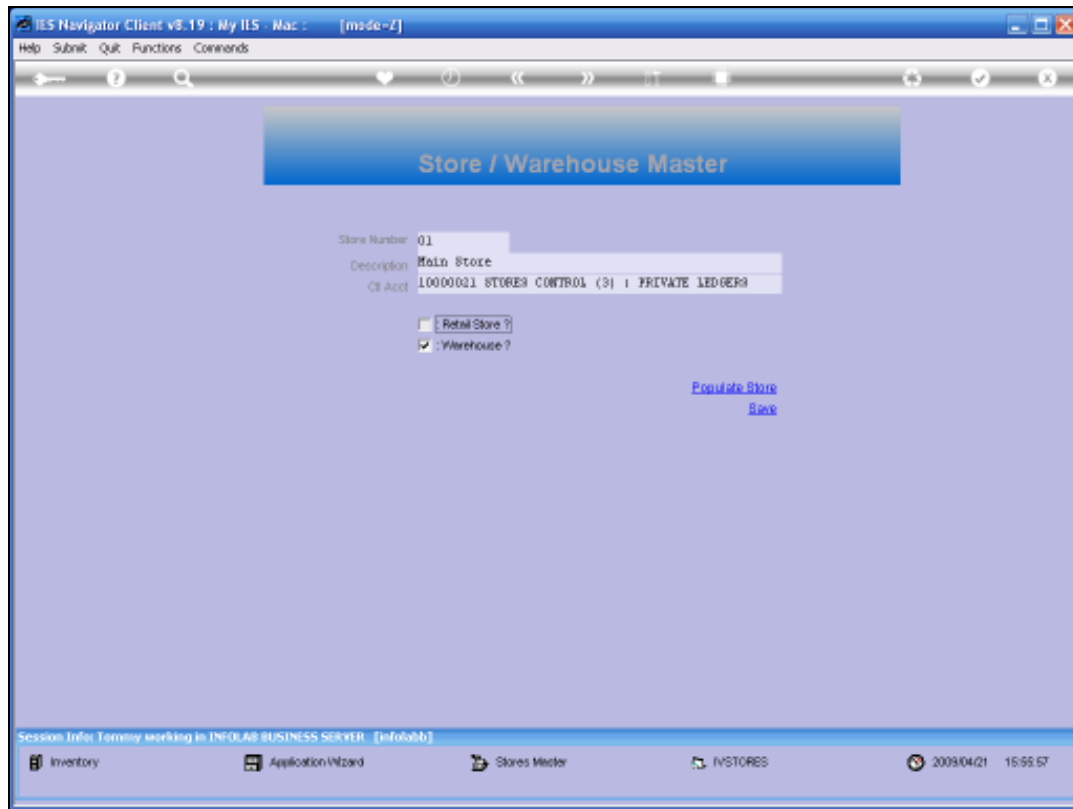
Slide 10

Slide notes:



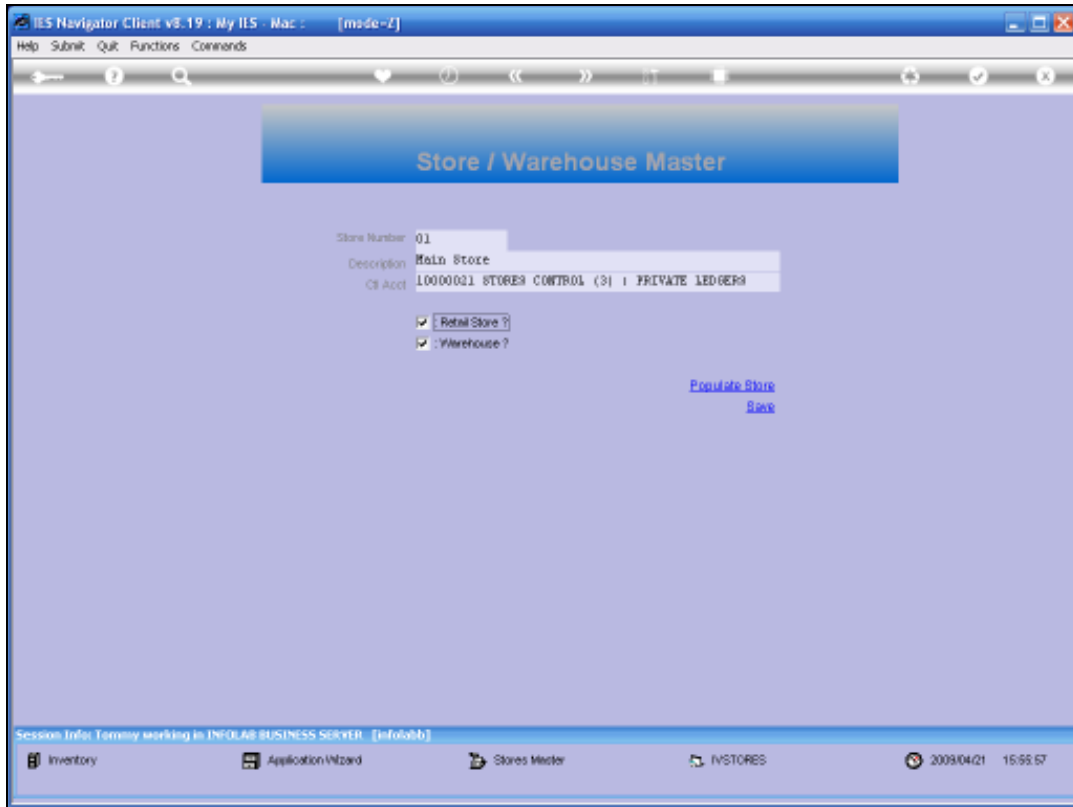
Slide 11

Slide notes:



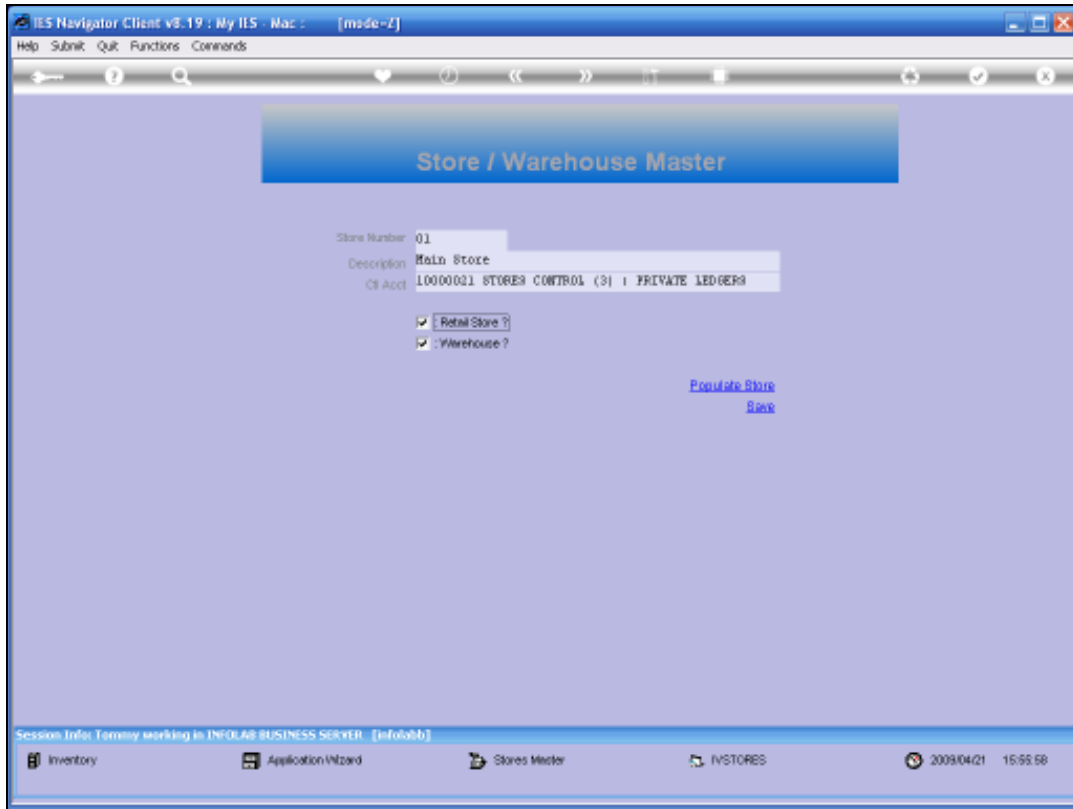
Slide 12

Slide notes: We can open as many Stores Master records as we need. For each Store, a Sub Ledger is opened in the main General Ledger, and the Control Account that is selected is the head of this Sub Ledger. All transactions on Stock Items in this Store will also be reflected in the Control Account, and the Control Account will at all times automatically balance to the total value of all Stock in that Store. Therefore, the Control Account should only be used for 1 Store at a time.



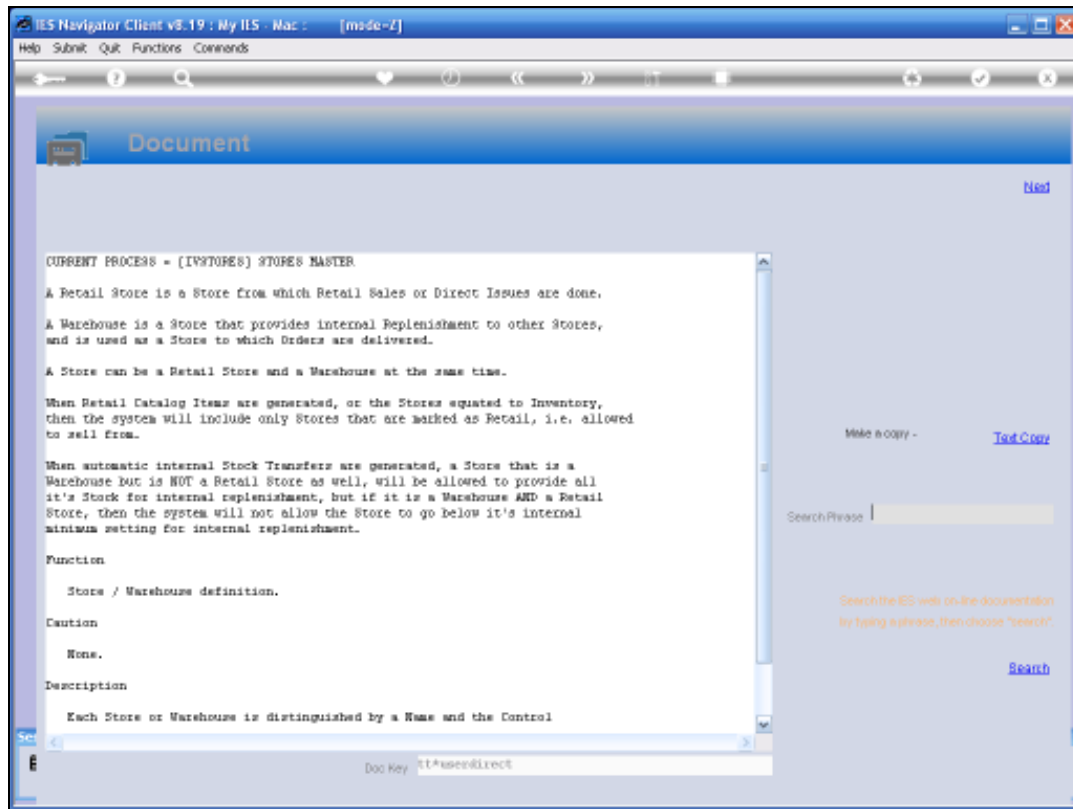
Slide 13

Slide notes: For each Store, we may select that it is a Retail Store or a Warehouse or both.



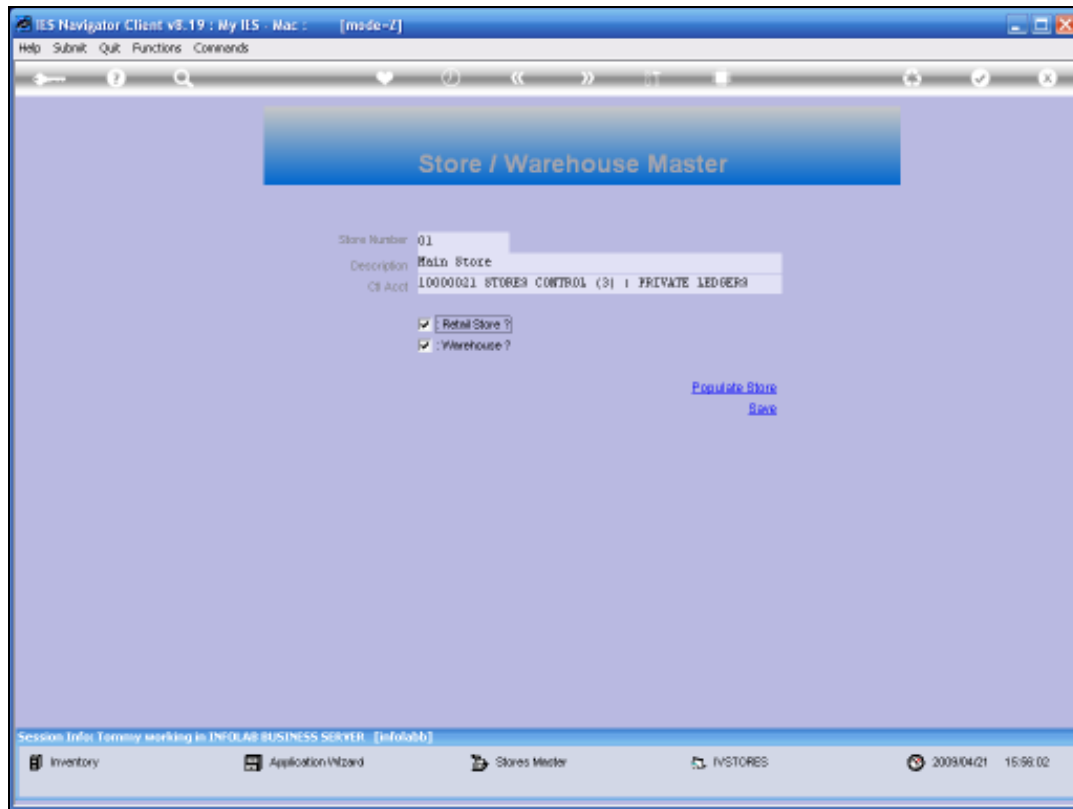
Slide 14

Slide notes:



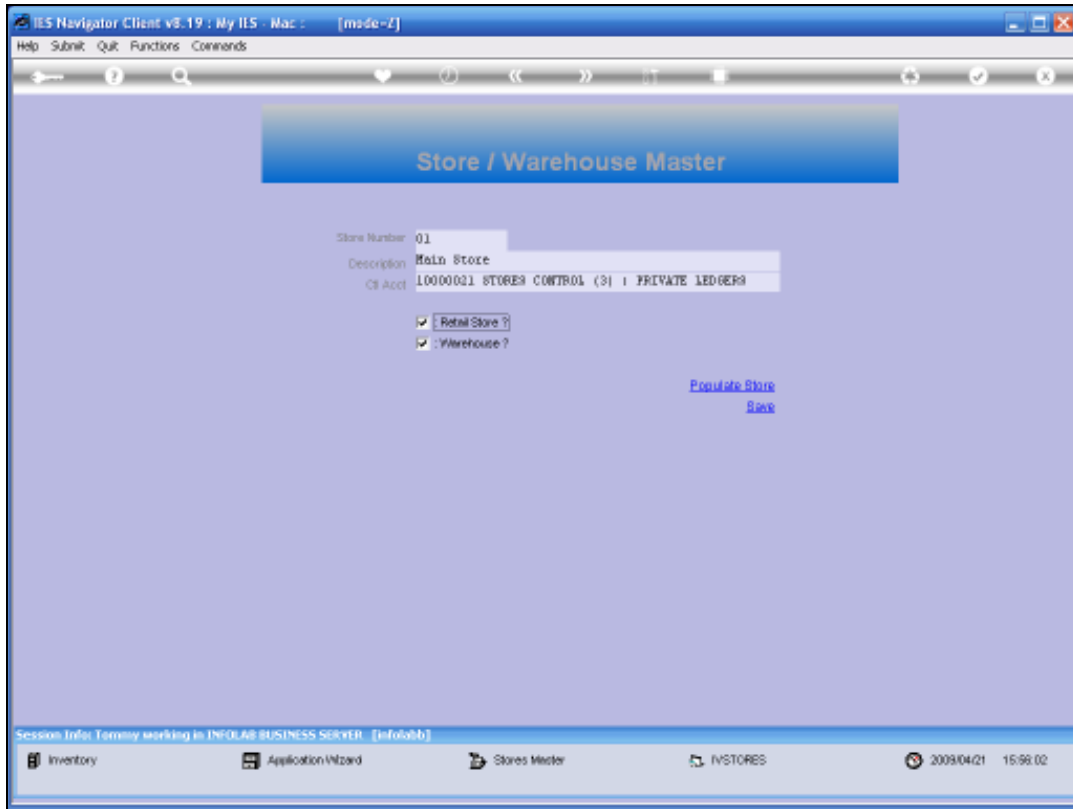
Slide 15

Slide notes: And the Help explains the meaning of these choices.



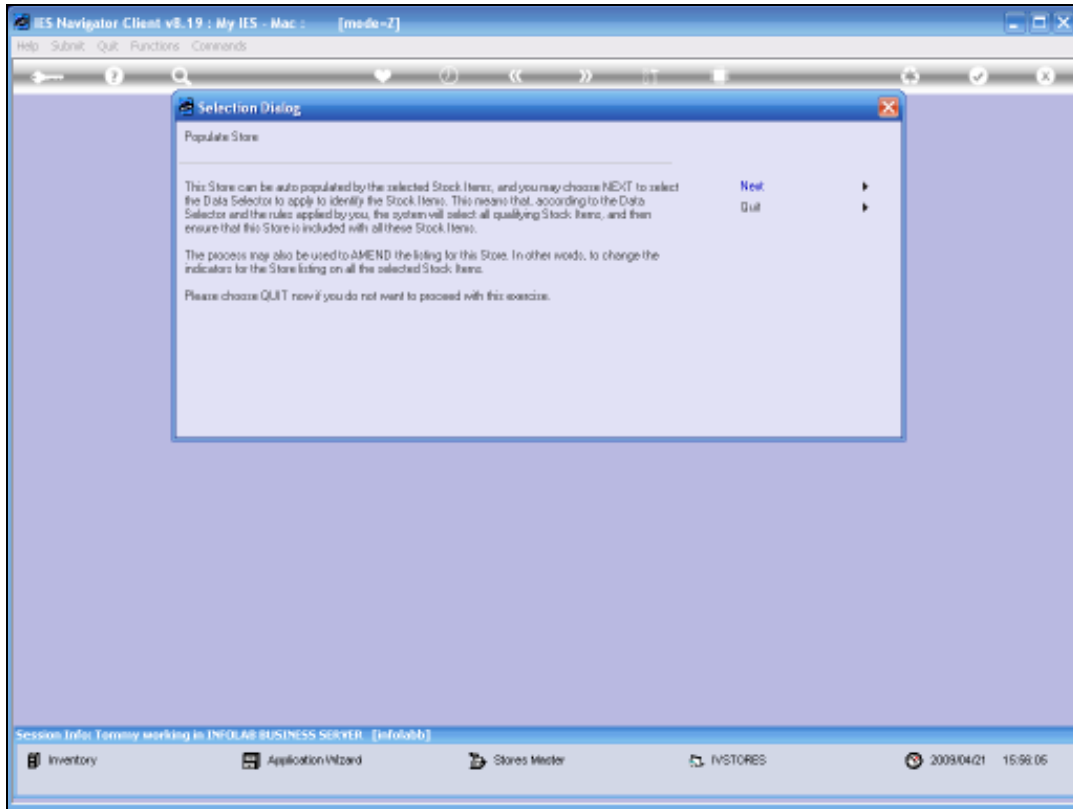
Slide 16

Slide notes: Next, we look at the wizard option called "Populate Store". This wizard has functions to update any selection of Stock Items in the Catalogue, and insert this Store, or to change settings and properties for this Store on the selected Stock Items, according to the choices we exercise.



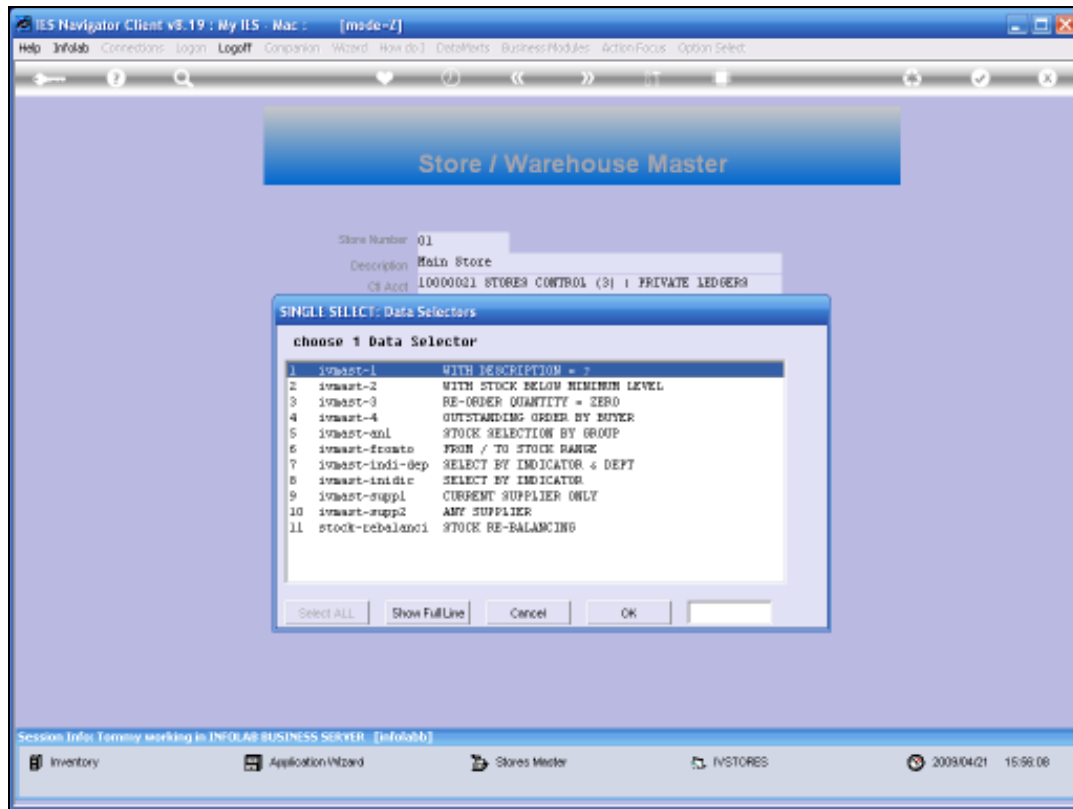
Slide 17

Slide notes:



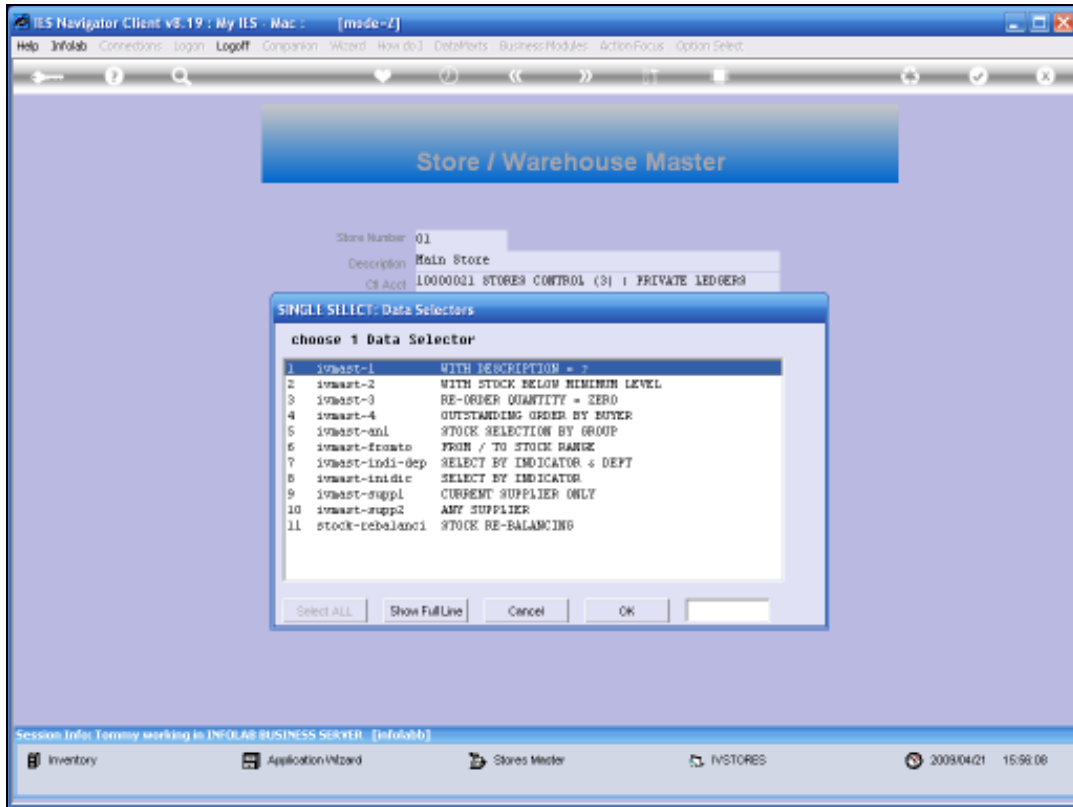
Slide 18

Slide notes:



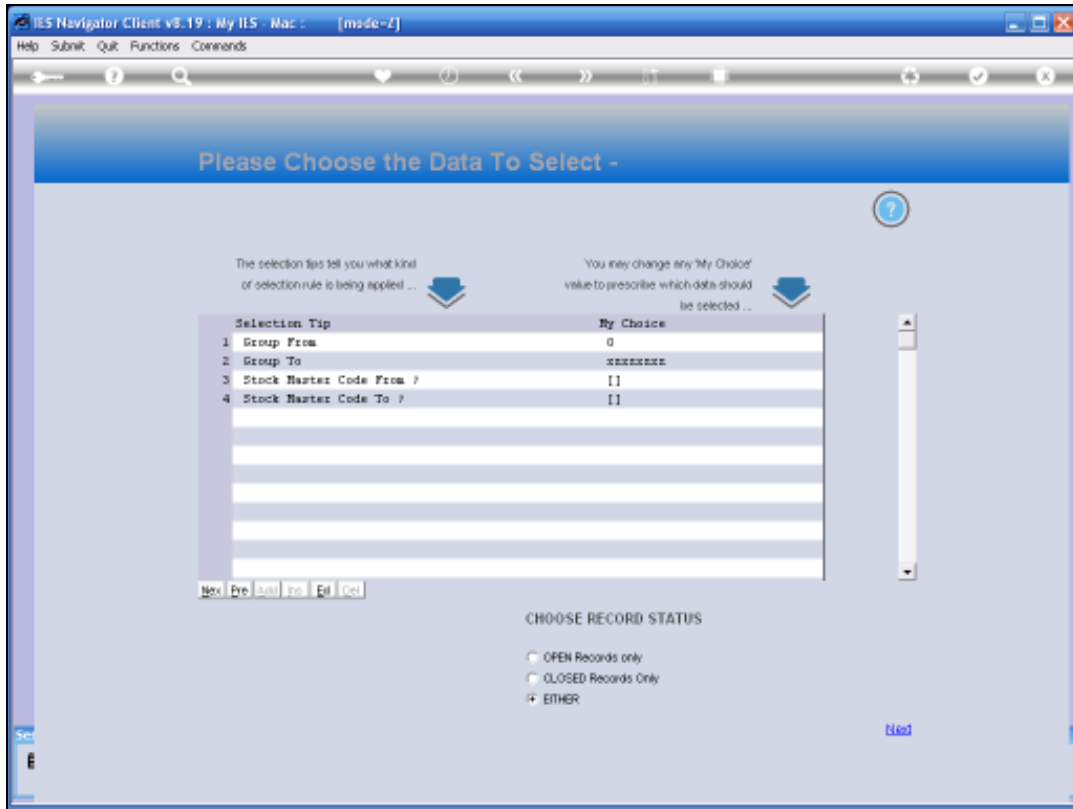
Slide 19

Slide notes: When we apply the wizard for some action, we always make a selection of Stock Items from the Catalogue, and only these selected Stock Items will potentially be affected. We may select the entire Catalogue, or just some parts of it.

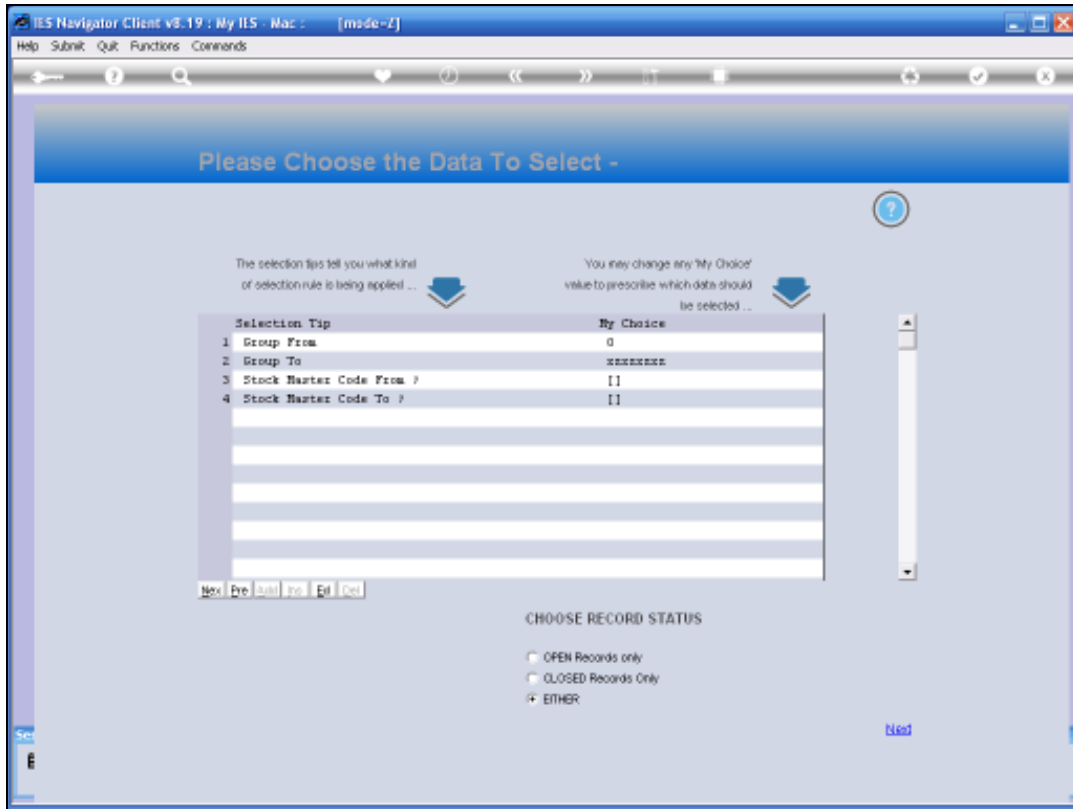


Slide 20

Slide notes:



Slide 21
Slide notes:



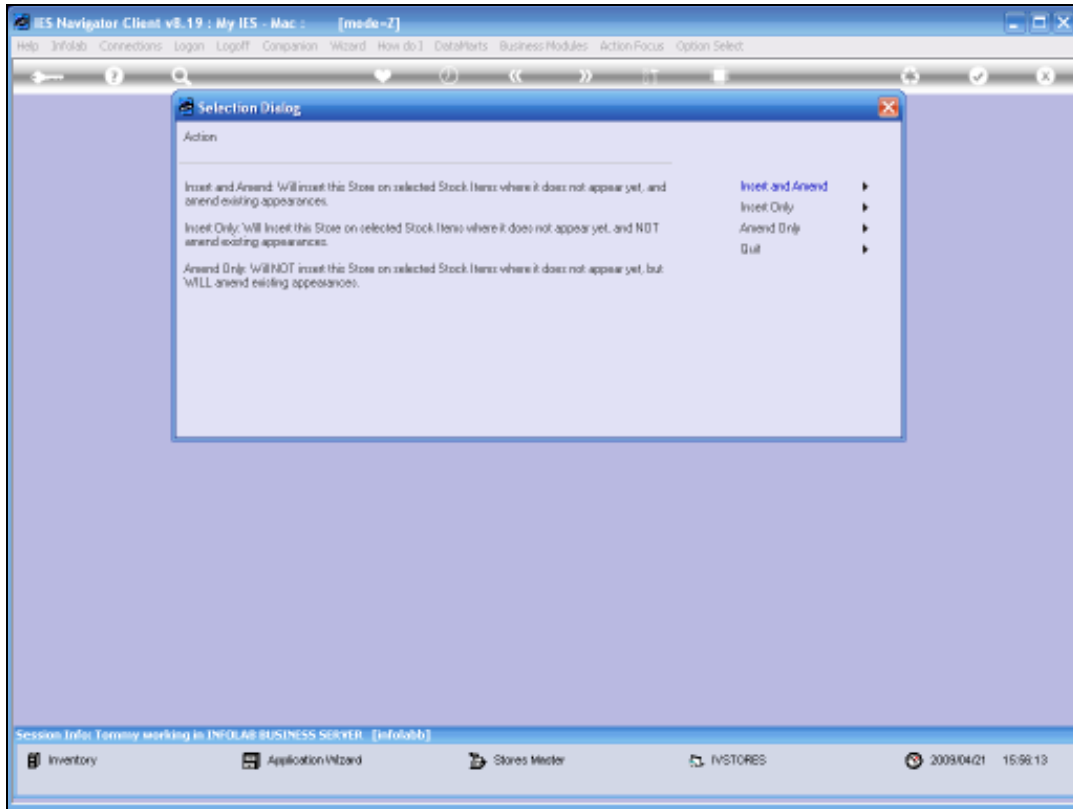
Slide 22

Slide notes:



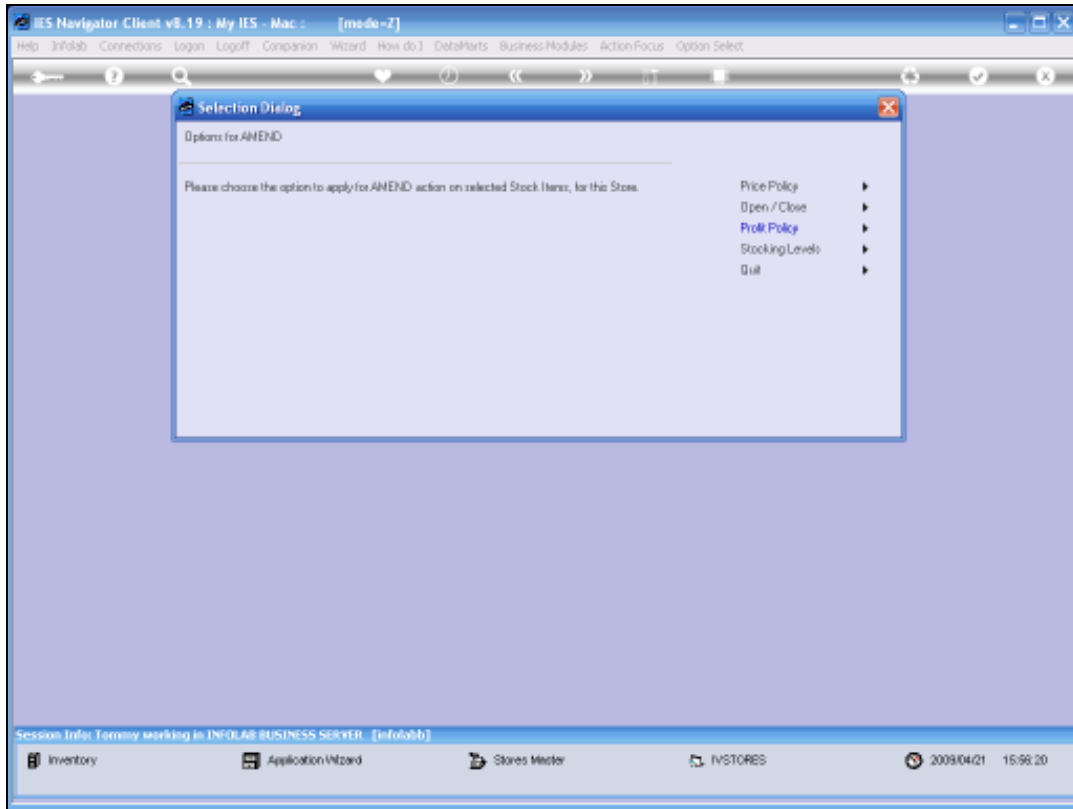
Slide 23

Slide notes:



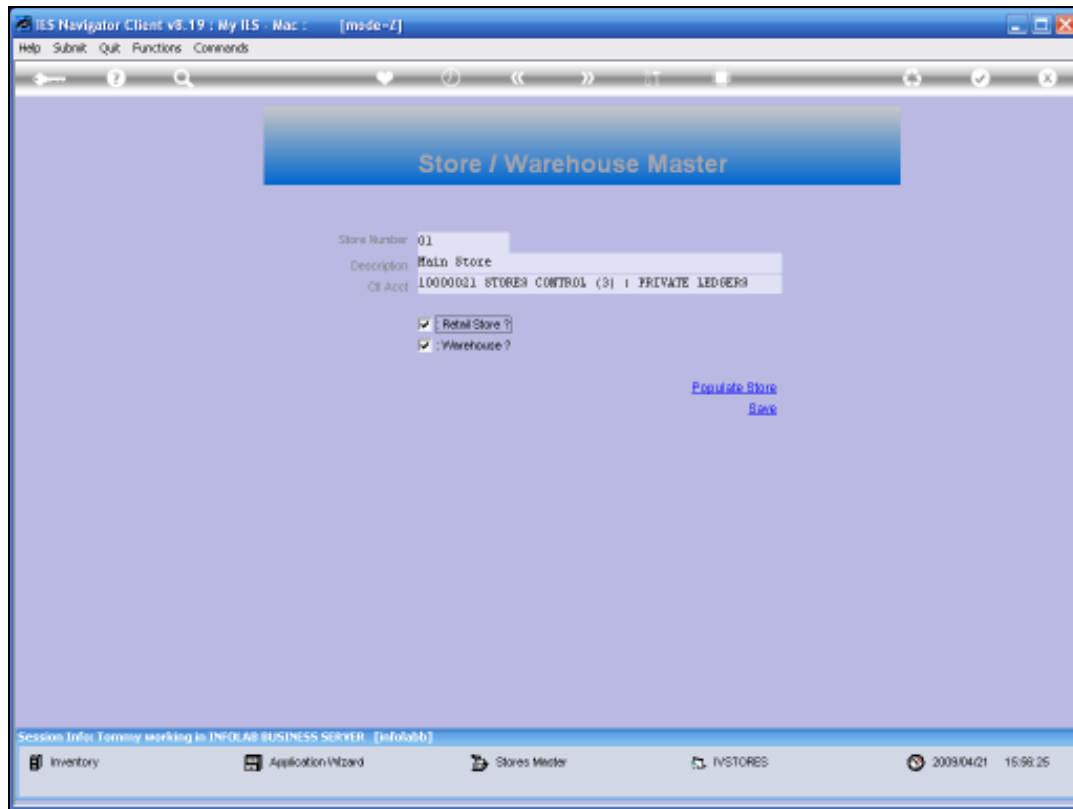
Slide 24

Slide notes: Next, we choose between Insert & Amend, or only Insert or only Amend.



Slide 25

Slide notes: And then we choose the type of Action, and depending on the choice we make, we will be prompted for the Values to use.



Slide 26

Slide notes: So the Stores wizard to populate Stock Items in the Store is powerful, flexible and useful.