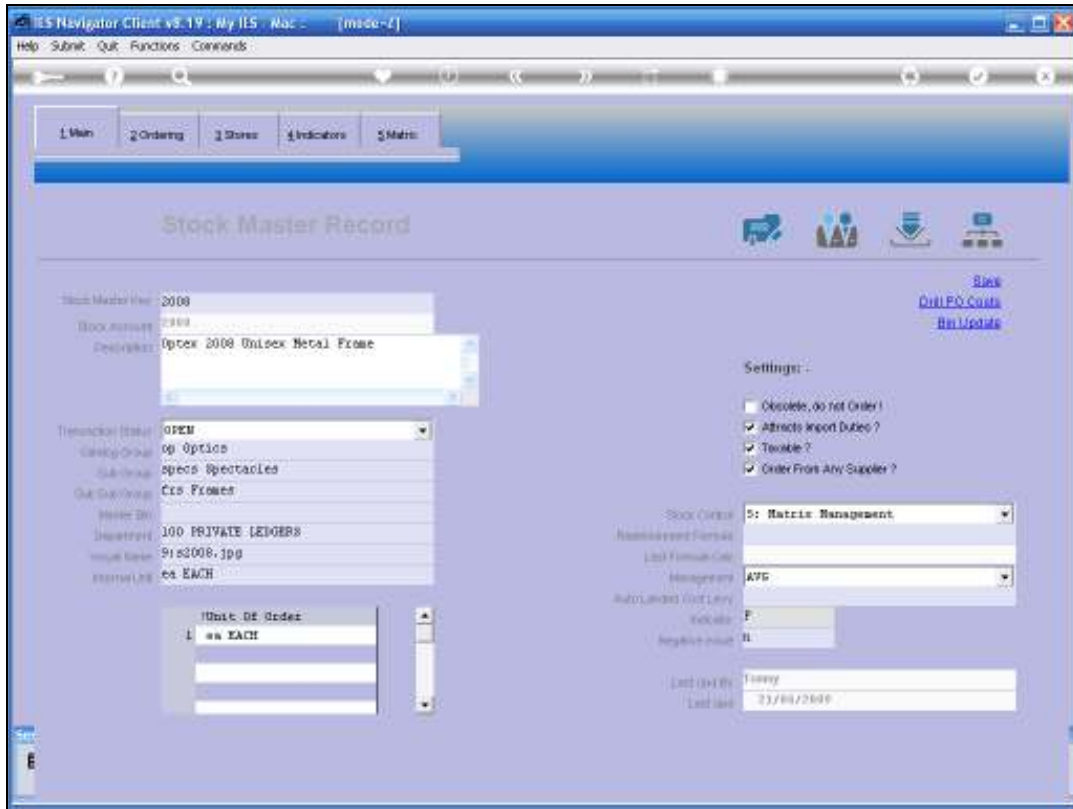
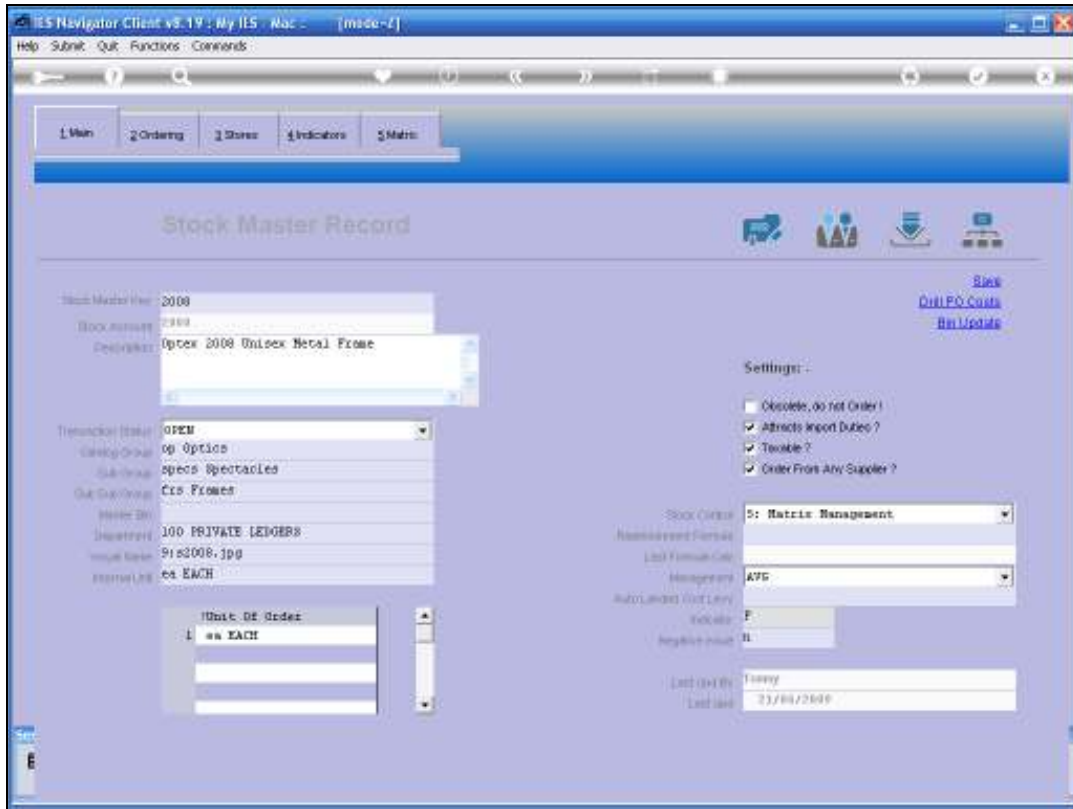


Slide 1

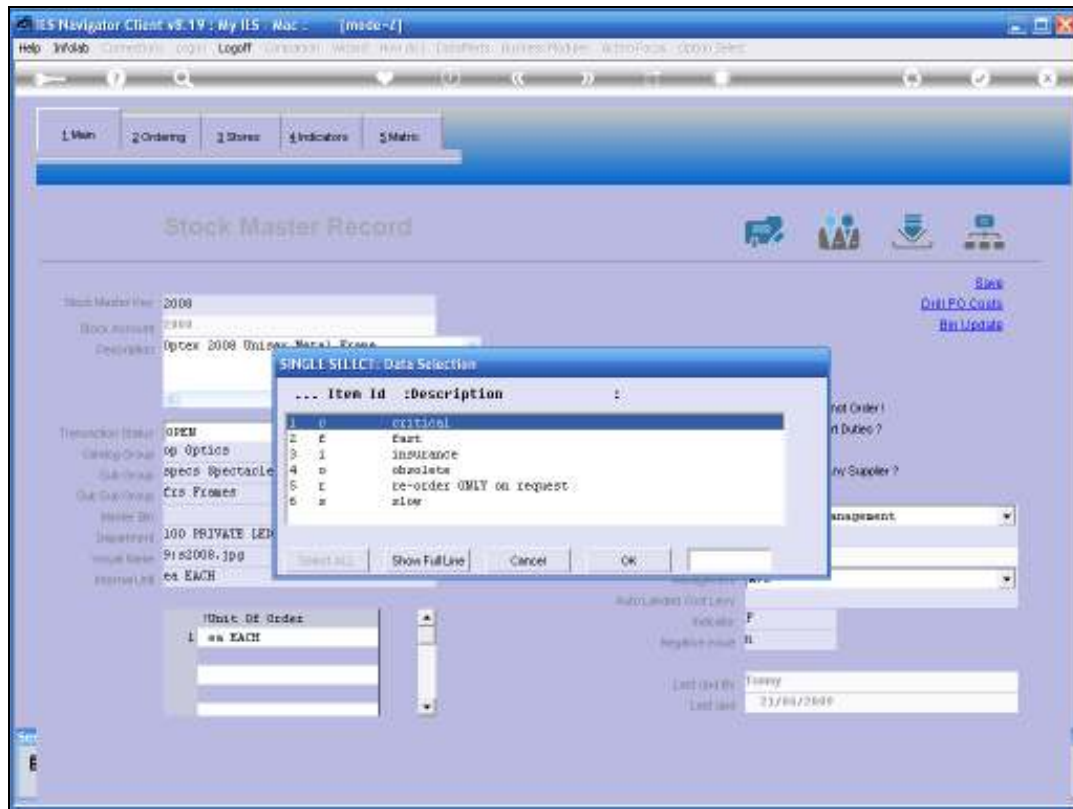
Slide notes: Stock Indicators are used as another classification for Stock Items, and the example we are looking at, on the Stock Master, has an indicator of "F" for Fast Moving Stock.



Slide 2
Slide notes:

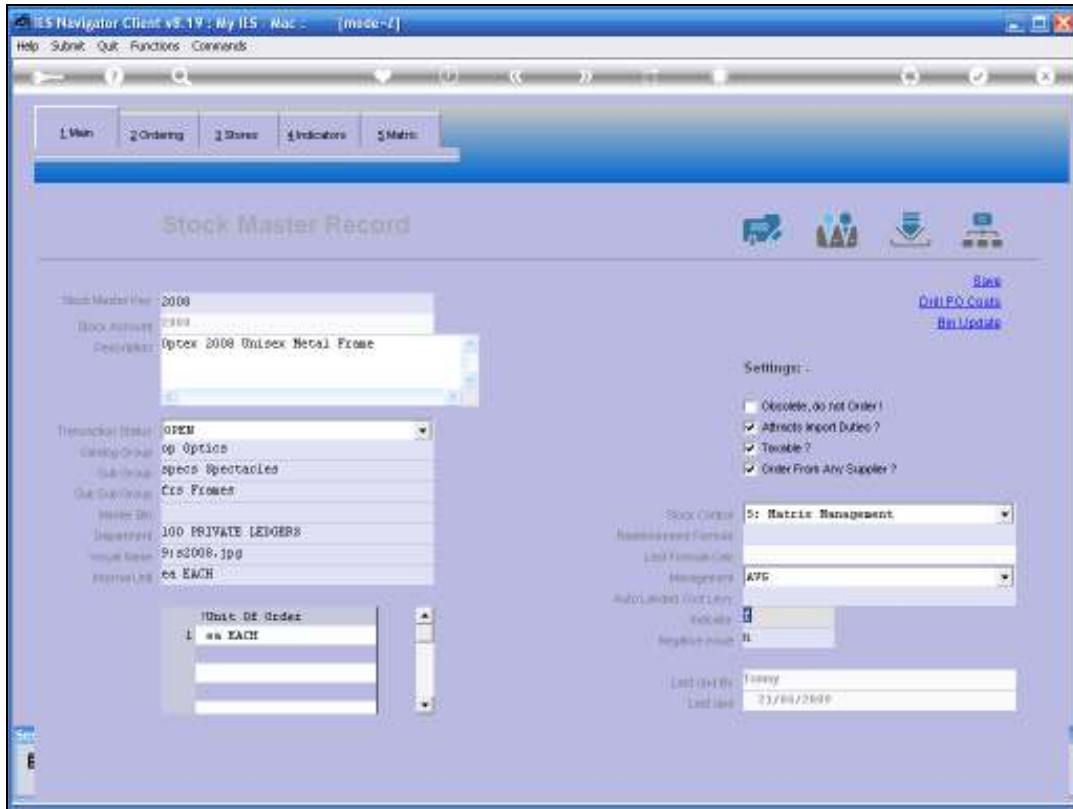


Slide 3
Slide notes:

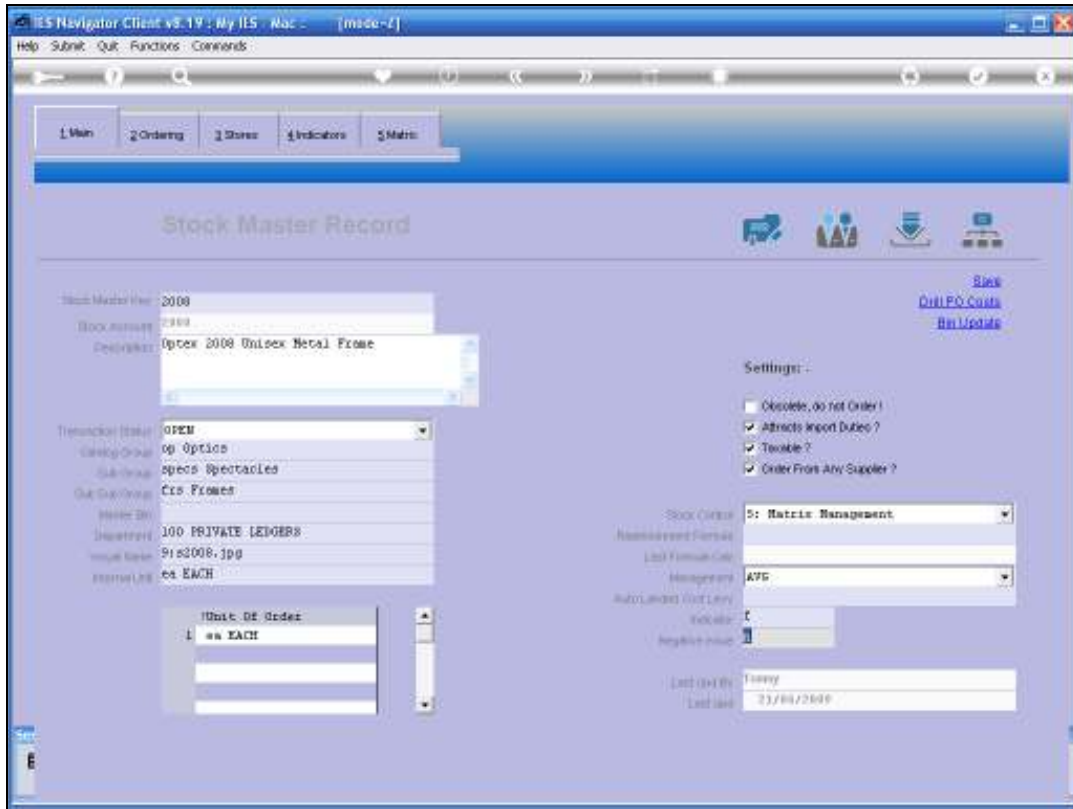


Slide 4

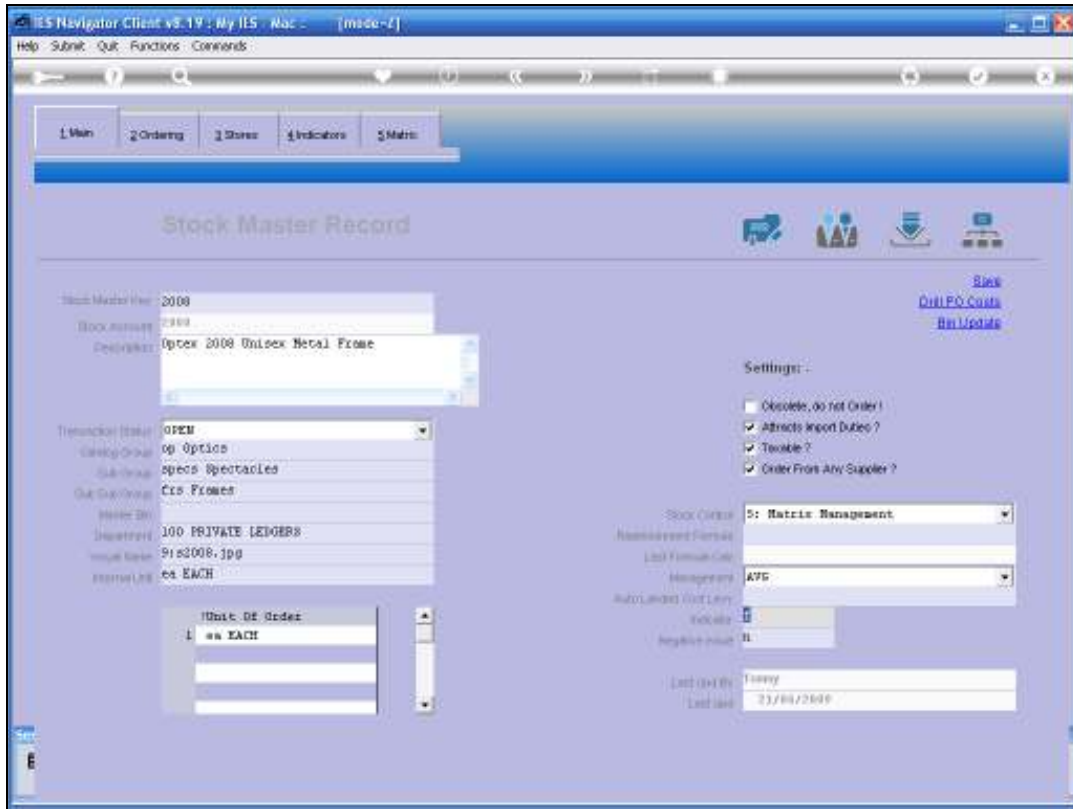
Slide notes: By default, the system will use the so-called FISCOR method for indicators, but we may use any classification system we prefer, and if we do not wish to use the FISCOR method, then we may define different indicators.



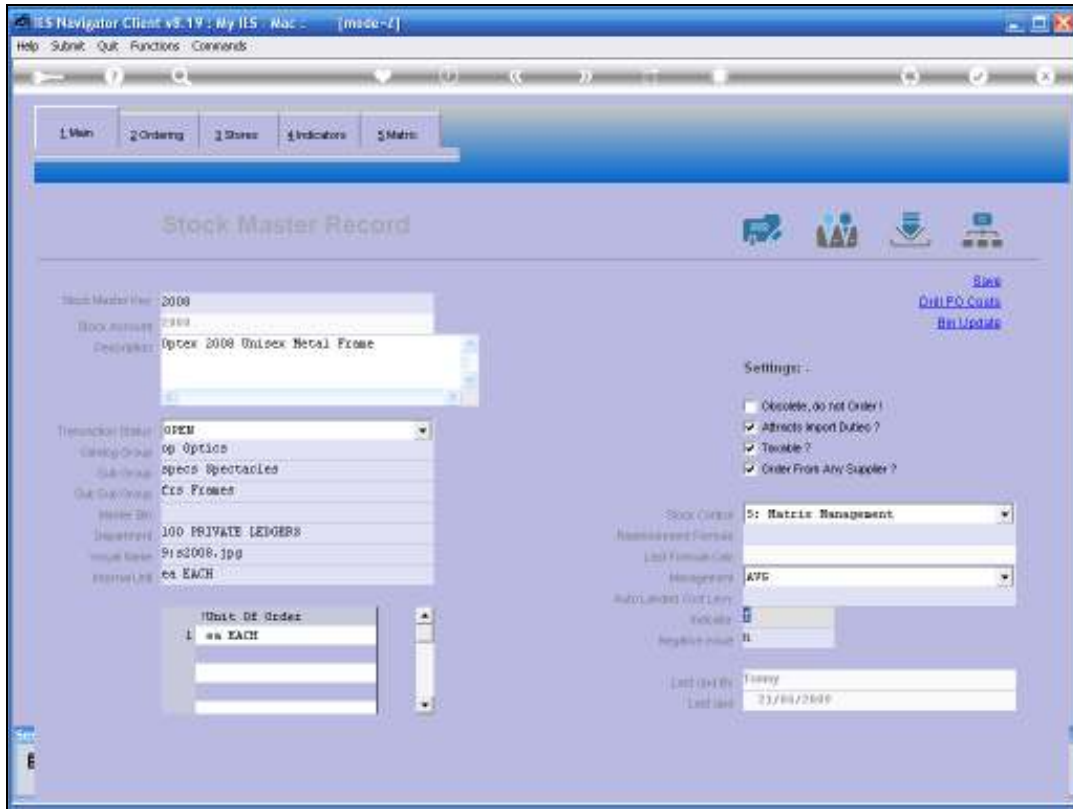
Slide 5
Slide notes:



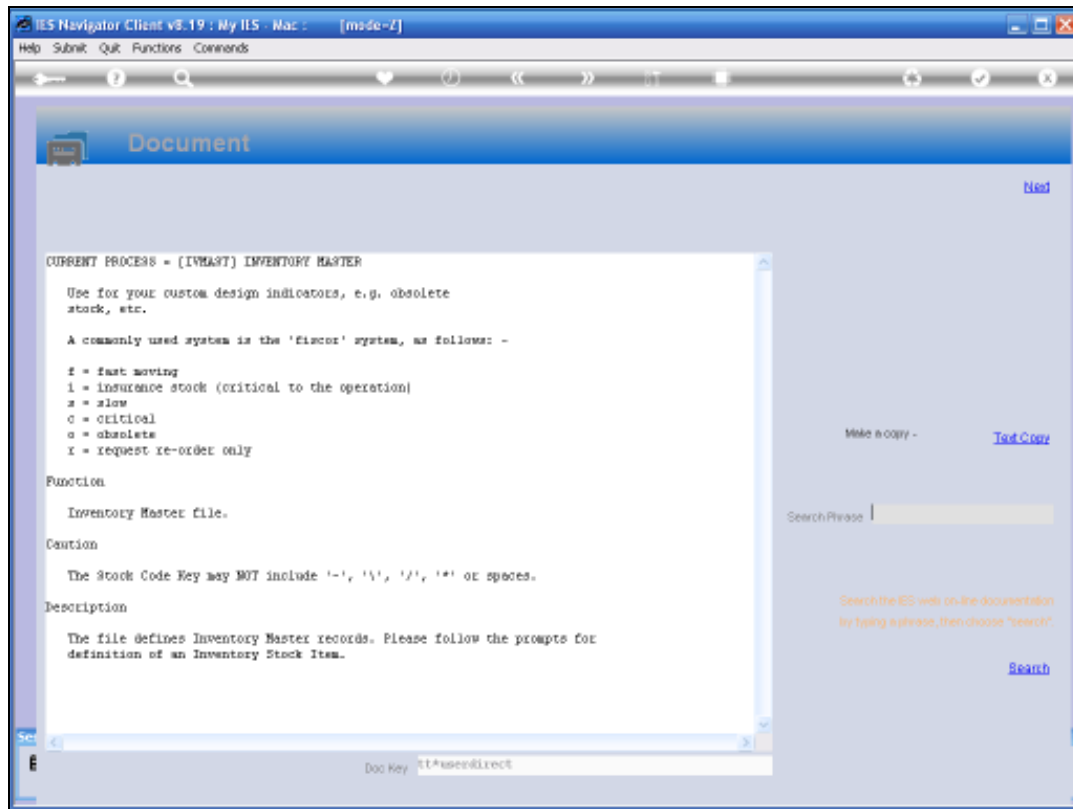
Slide 6
Slide notes:



Slide 7
Slide notes:

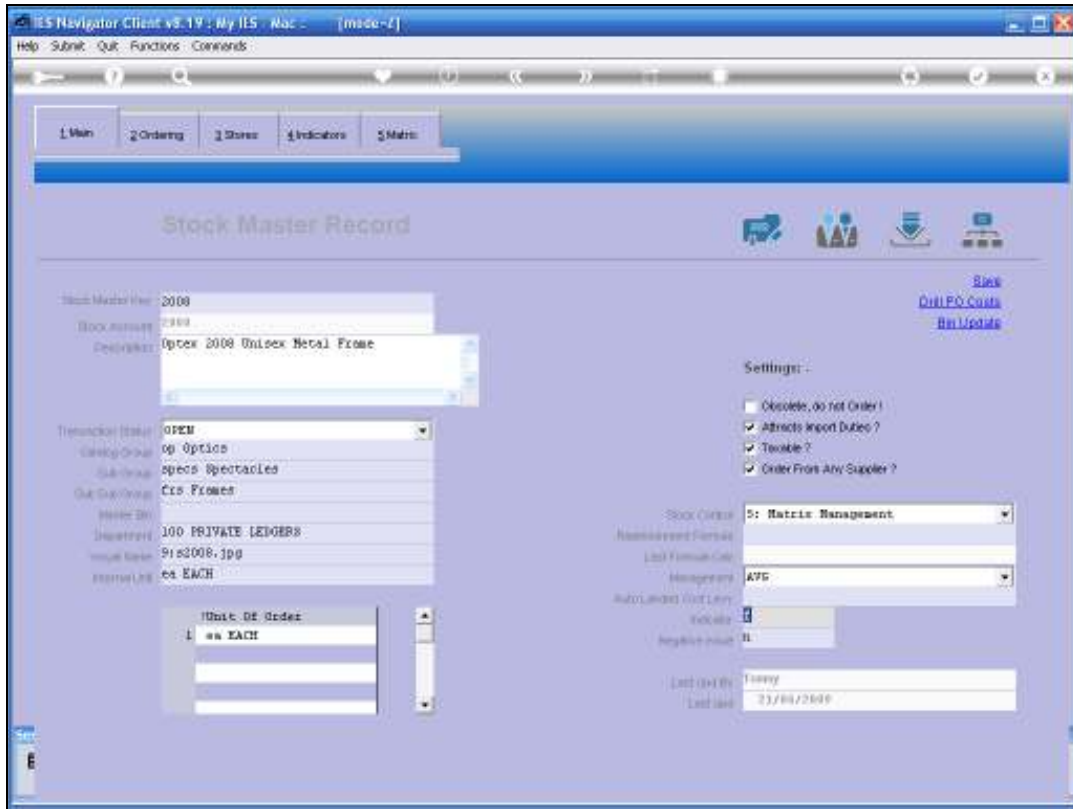


Slide 8
Slide notes:

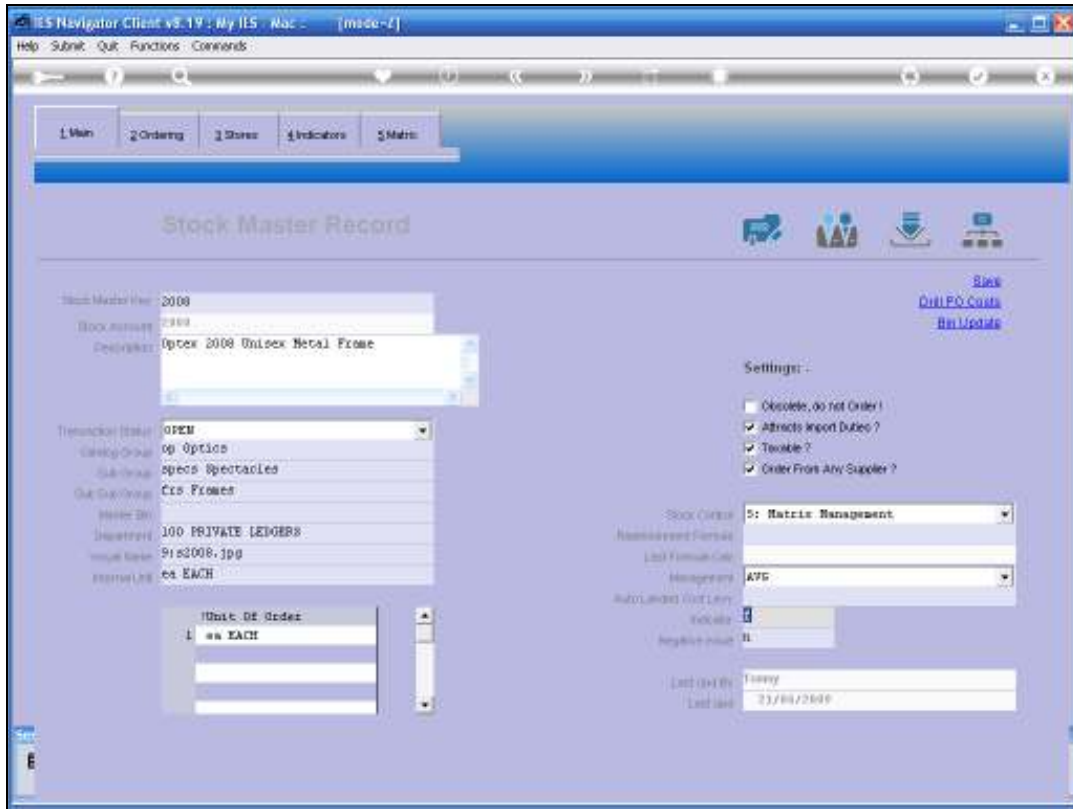


Slide 9

Slide notes: This is the Help offered for the FISCOR method of classification, and it is a good management method. With this method, we can draw Reports on demand to show views of any group of Fast Moving Stock, Obsolete Stock, etc.



Slide 10
Slide notes:



Slide 11
Slide notes:



Slide 12

Slide notes:



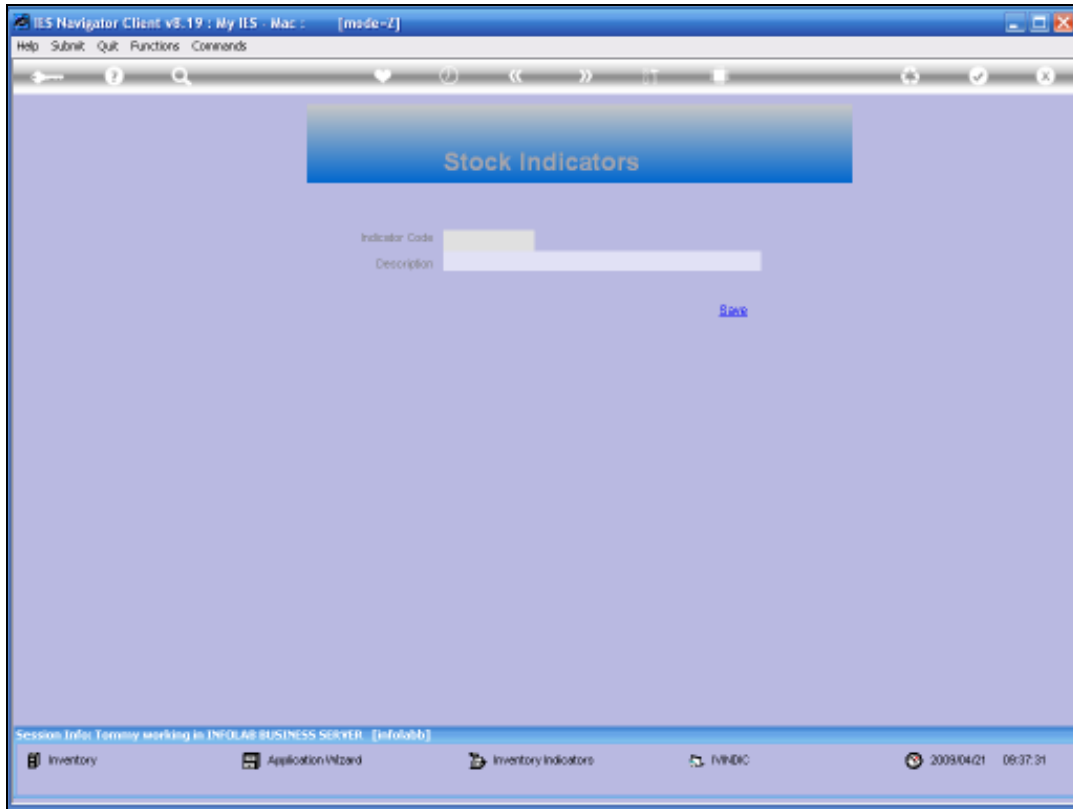
Slide 13

Slide notes:



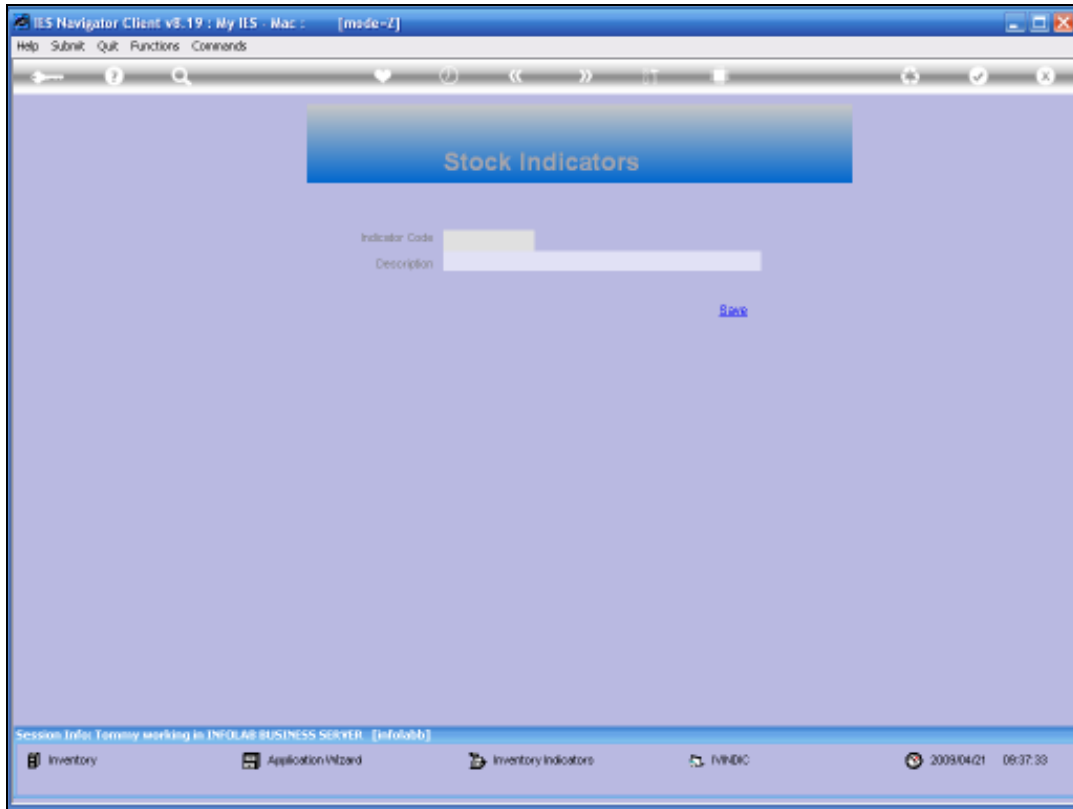
Slide 14

Slide notes: We can also re-define the Indicators on the master file, if we want to.



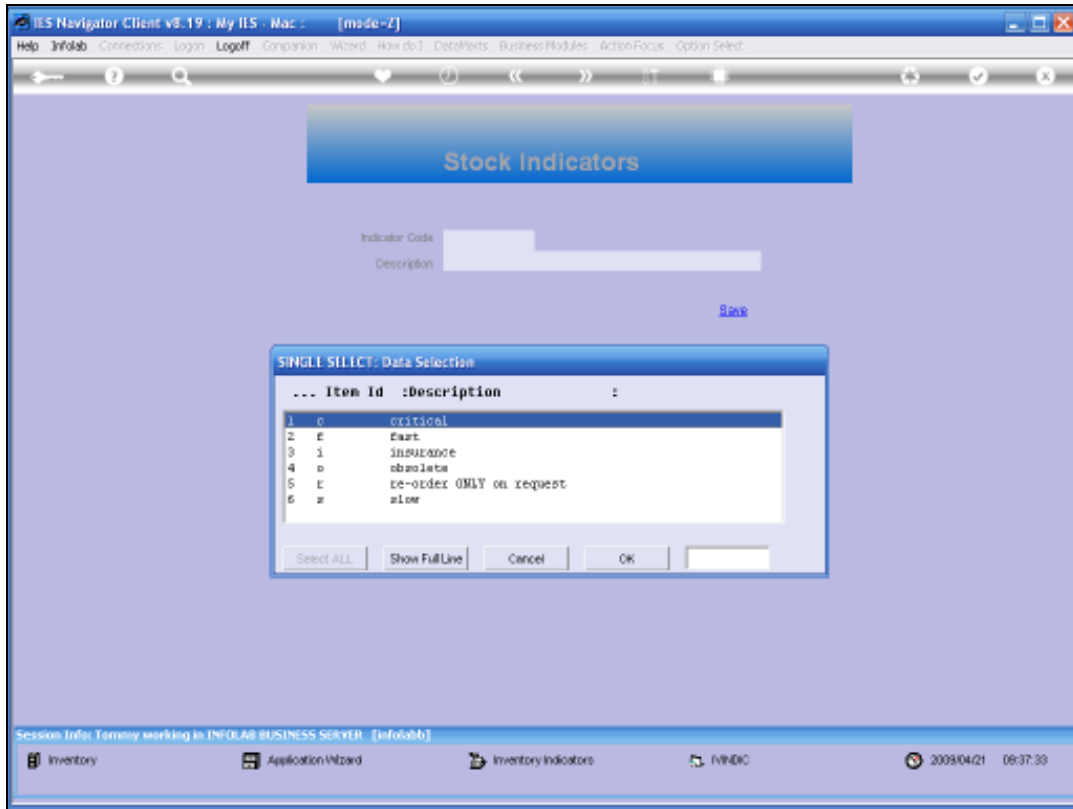
Slide 15

Slide notes:



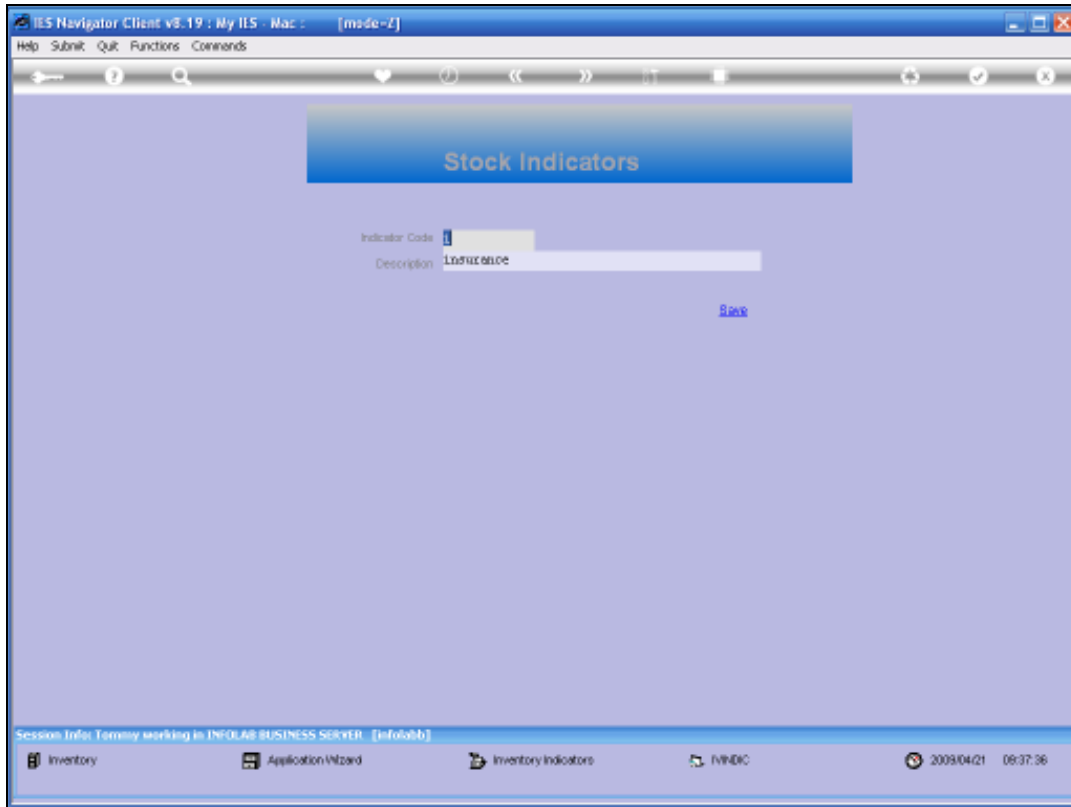
Slide 16

Slide notes:



Slide 17

Slide notes: By default, the indicators in our system are the FISCOR indicators.



Slide 18

Slide notes: An indicator is just a short Code with a Descriptive label, and we can make new or different ones, if we so desire.