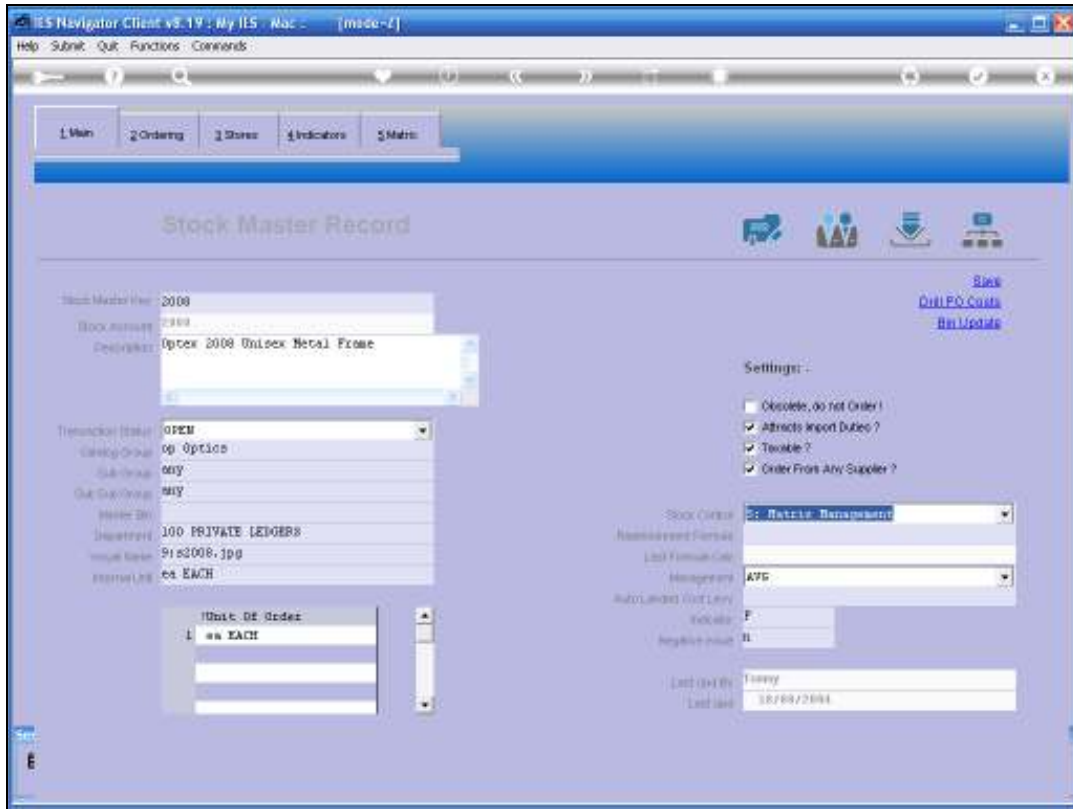


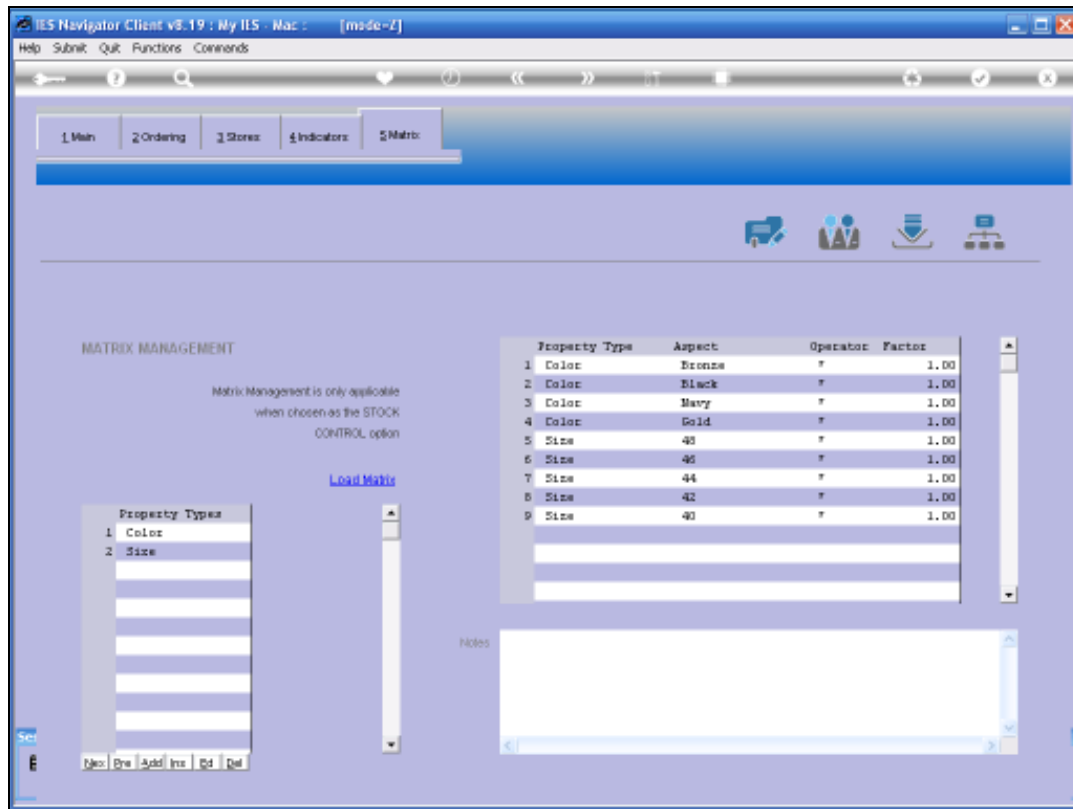
Slide 1

Slide notes: In this tutorial we will see how we can edit Matrix Values on a Stock Item. Matrix Management is an advanced management option on a Stock Item, and is suitable for Items where we have multiple properties for the same Item. For example, in the case of a Spectacle Frame, we may have 100 Items in Stock, but with different colors and sizes, even though it is the same Stock Item.



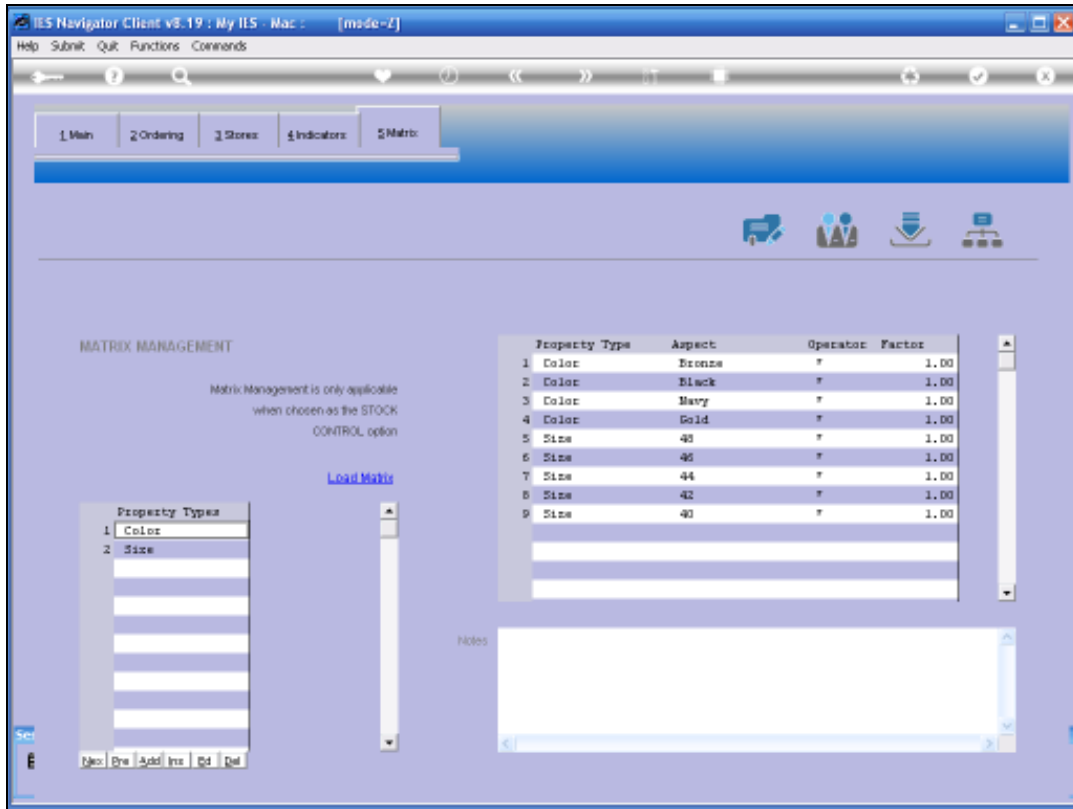
Slide 2

Slide notes: So in this example, we are looking at a Unisex Metal Frame, and it is matrix managed.

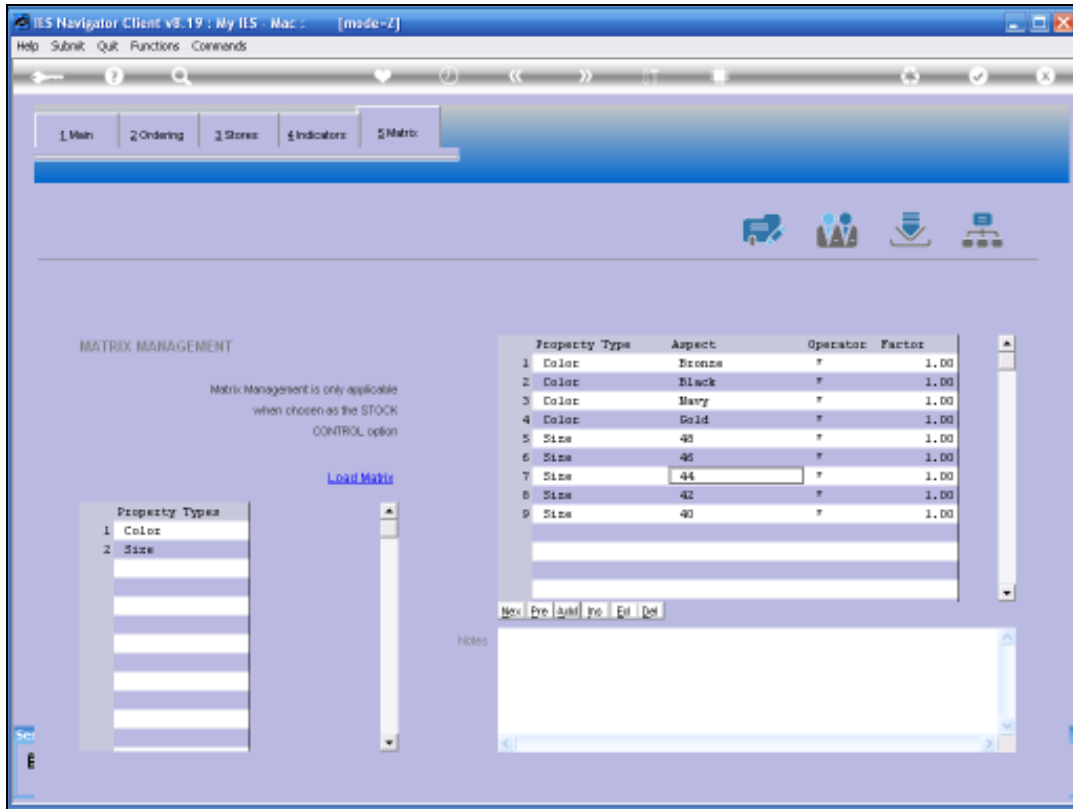


Slide 3

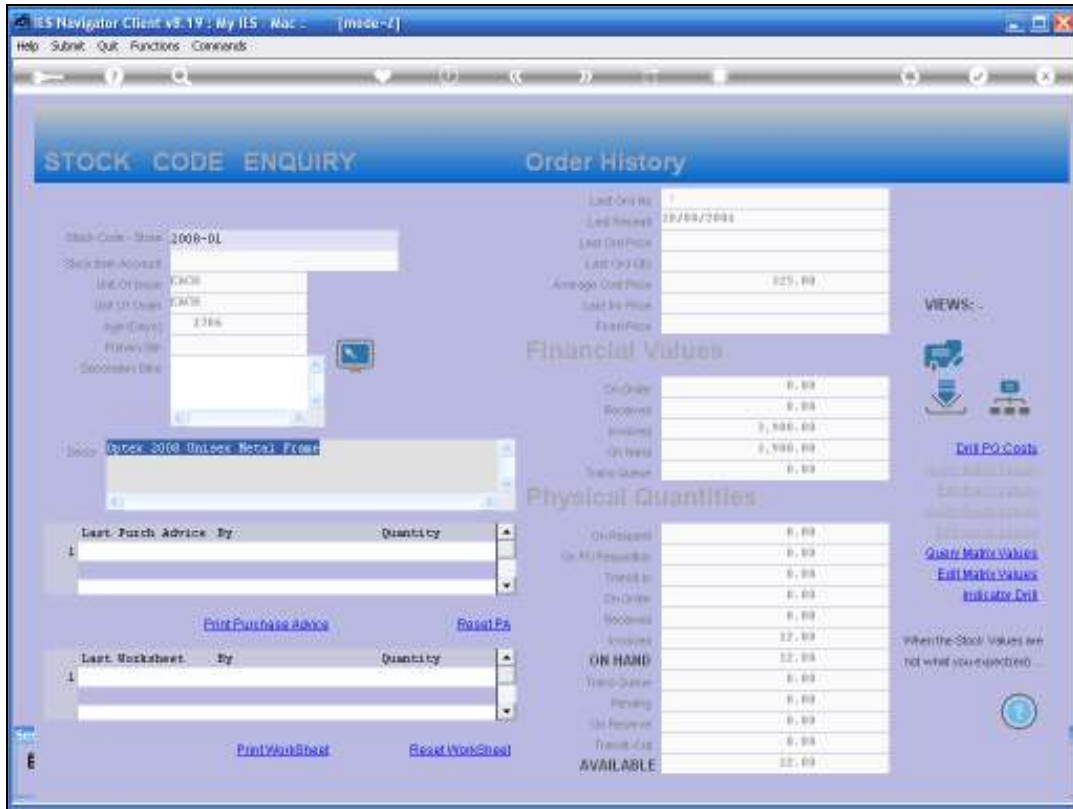
Slide notes: On the Matrix section of the Stock Master, we can see that this Item is managed on a Matrix that has 2 properties: Color and Size. Of course, a Matrix can also have more properties than the 2 in this example.



Slide 4
Slide notes:

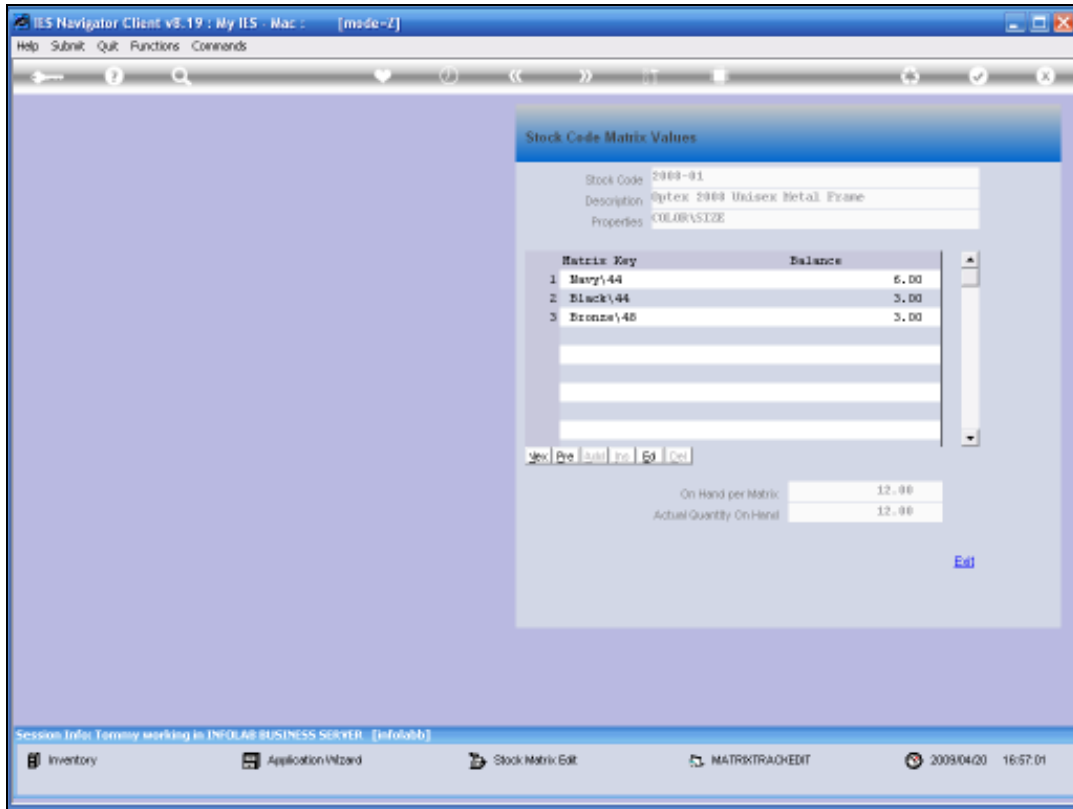


Slide 5
Slide notes:

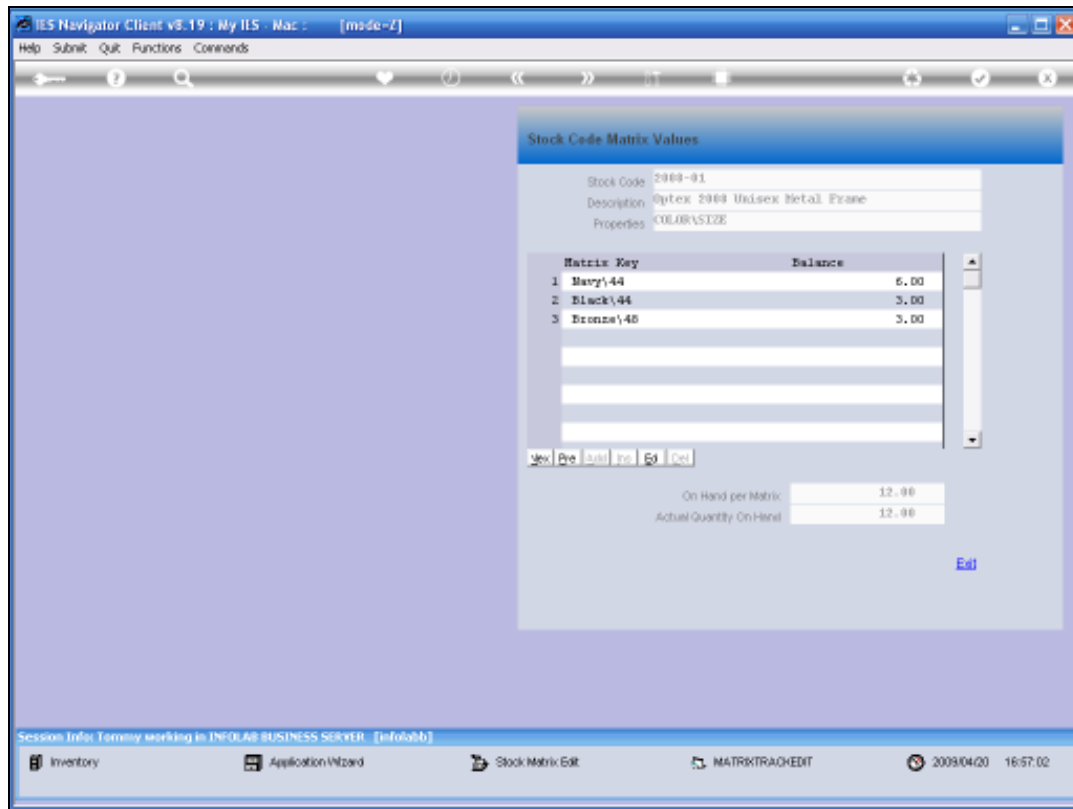


Slide 6

Slide notes: Although the system will automatically manage the changing values of the Item in Stock, there may be a case of Operator mistake, and where intervention is required to change the current values. We do this from the Stock Code enquiry screen, where the option to Query or Edit Matrix Values will be active when an Item is indeed Matrix managed. And if we have the necessary access, then we may choose the option to 'Edit Matrix Values'.

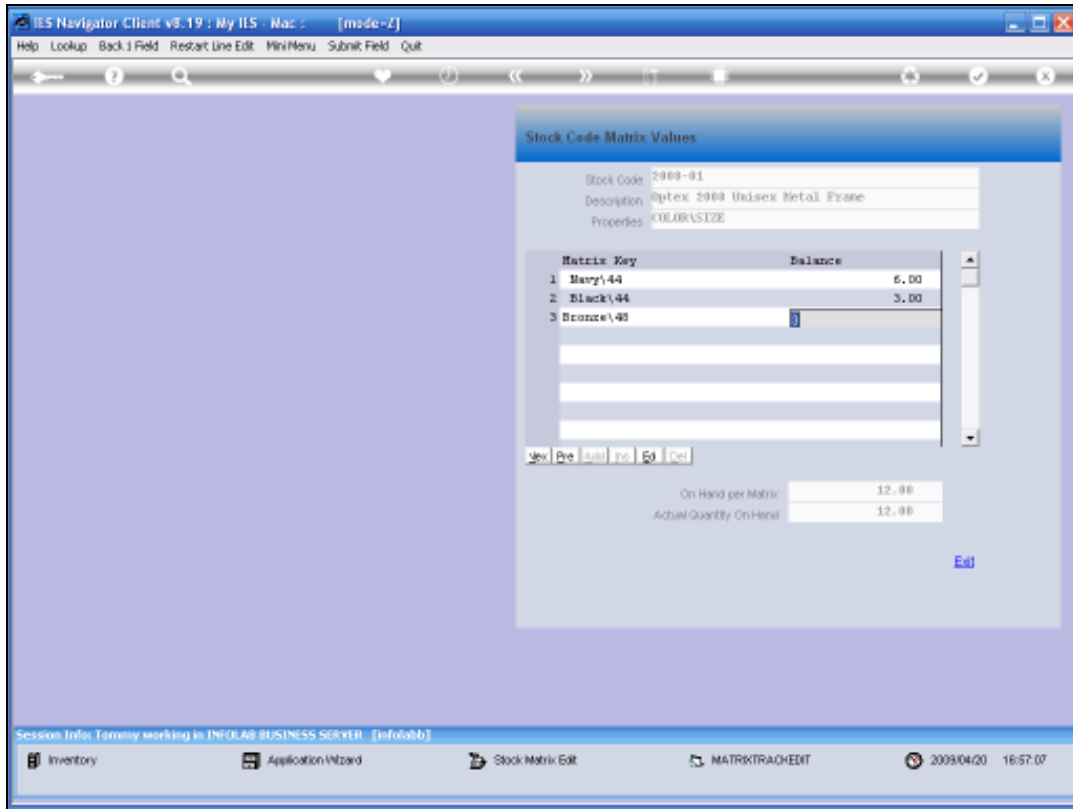


Slide 7
Slide notes:

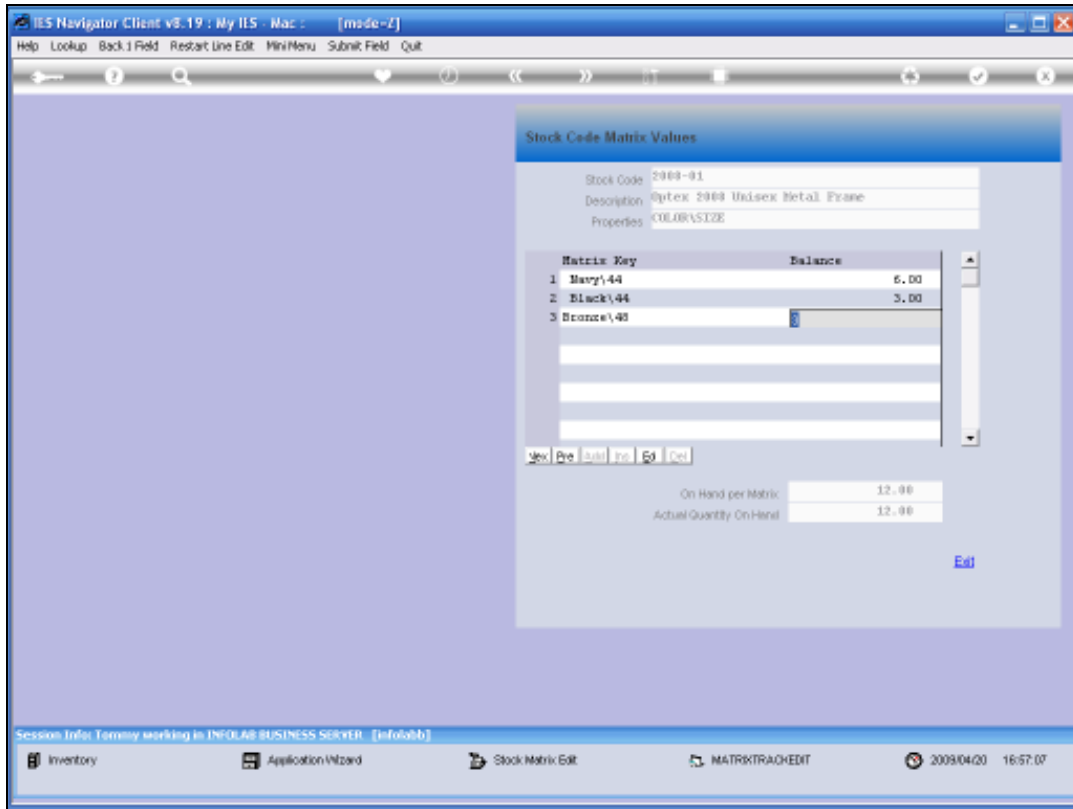


Slide 8

Slide notes: There is no option to add or insert new values, but we can edit the quantities indicated for existing entries, as long as we do not exceed the actual quantity in Stock.

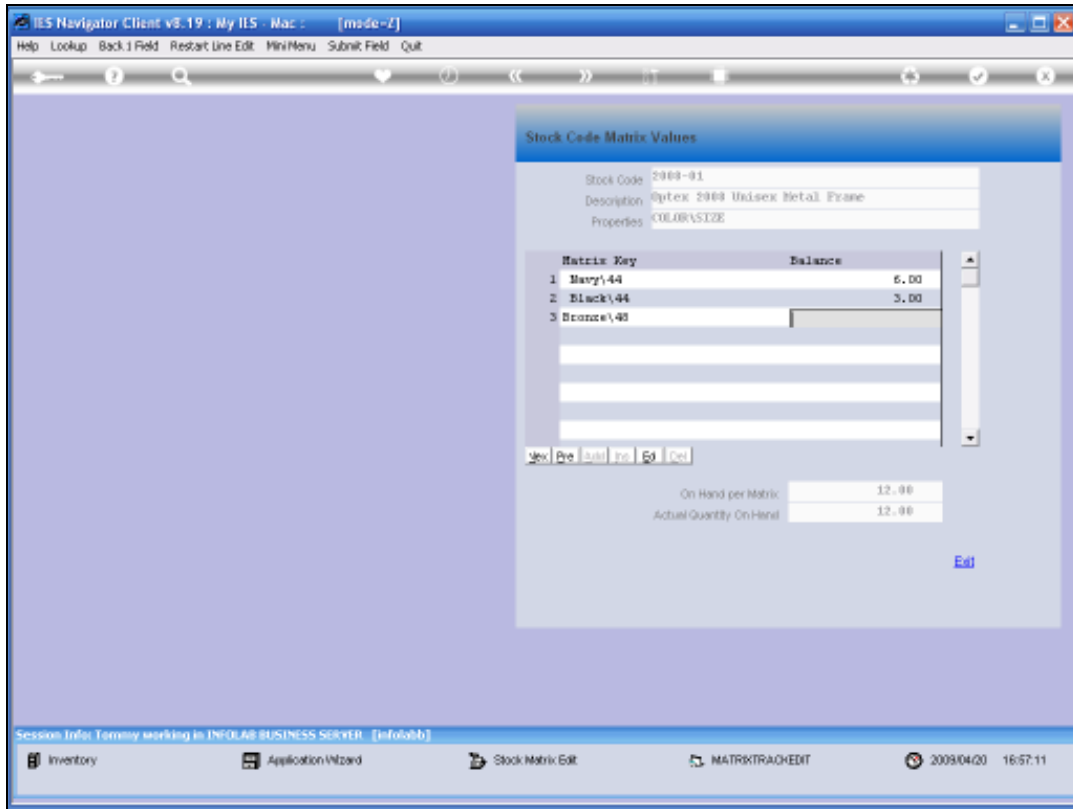


Slide 9
Slide notes:

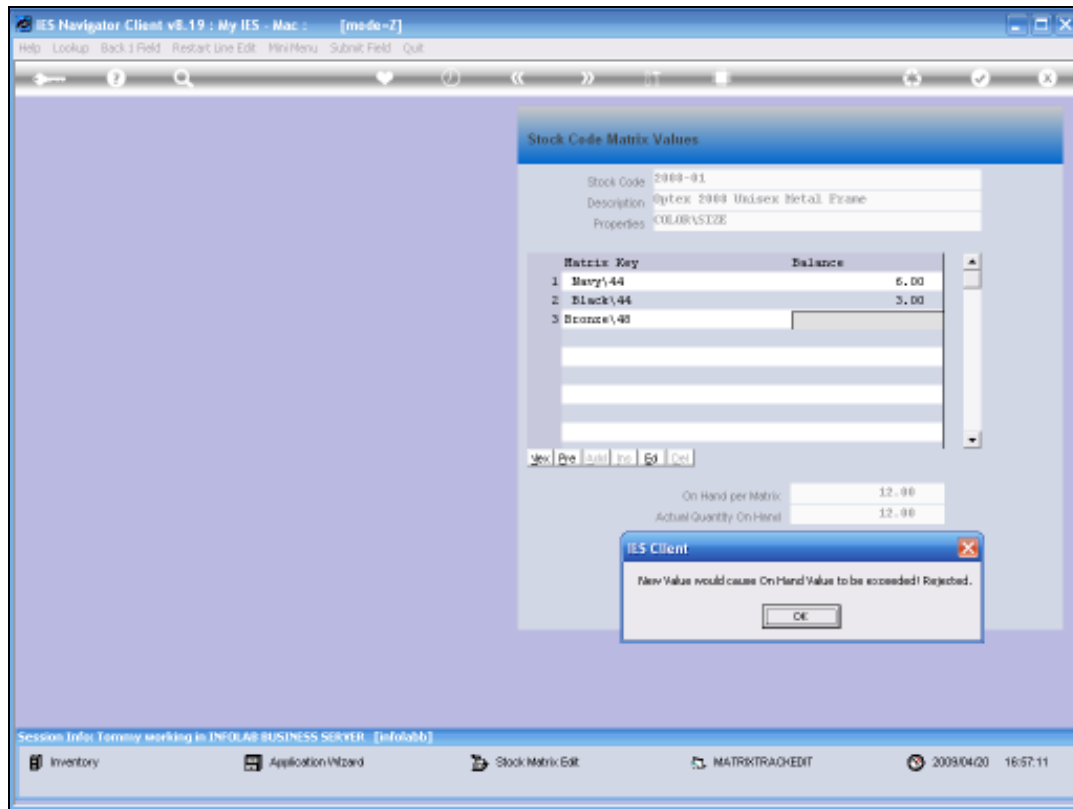


Slide 10

Slide notes:

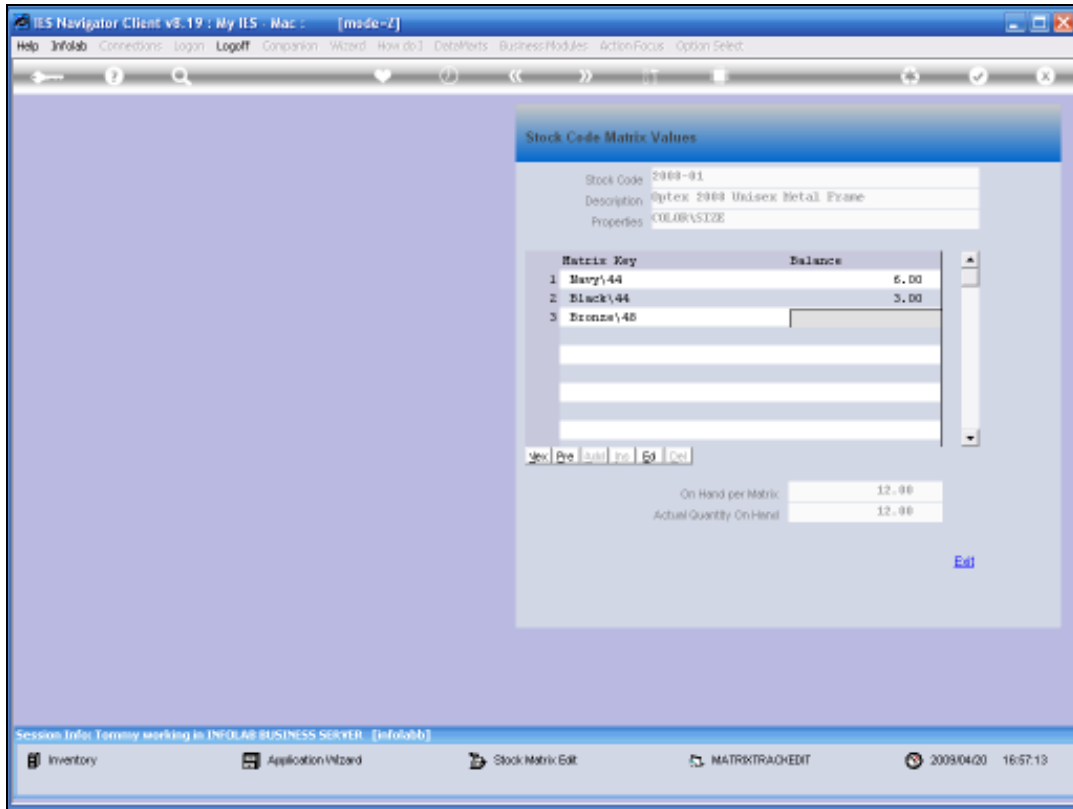


Slide 11
Slide notes:



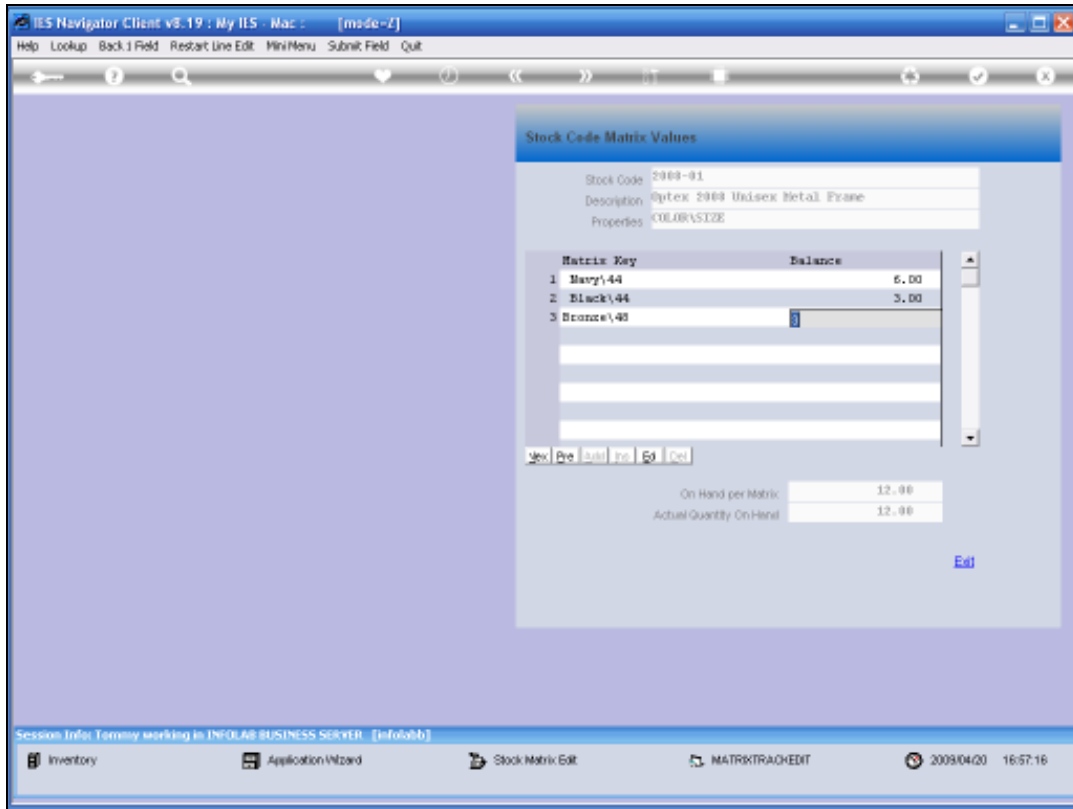
Slide 12

Slide notes: This new value will result in quantity on hand being exceeded and is therefore rejected.



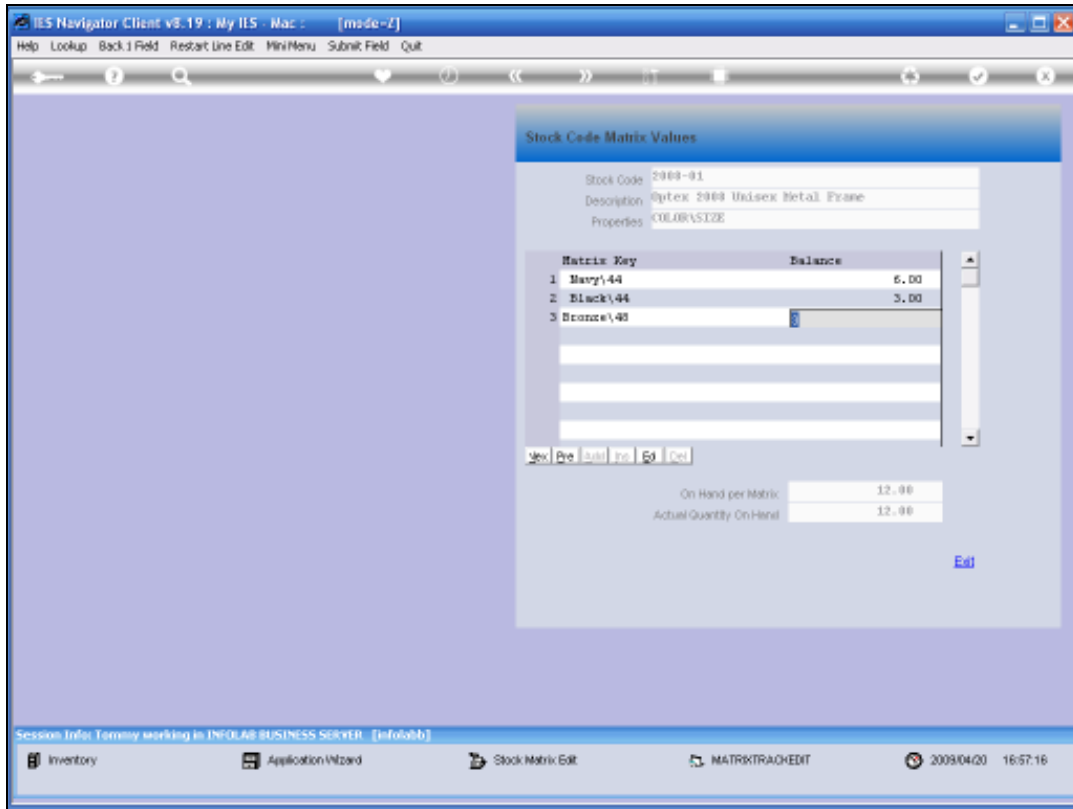
Slide 13

Slide notes:



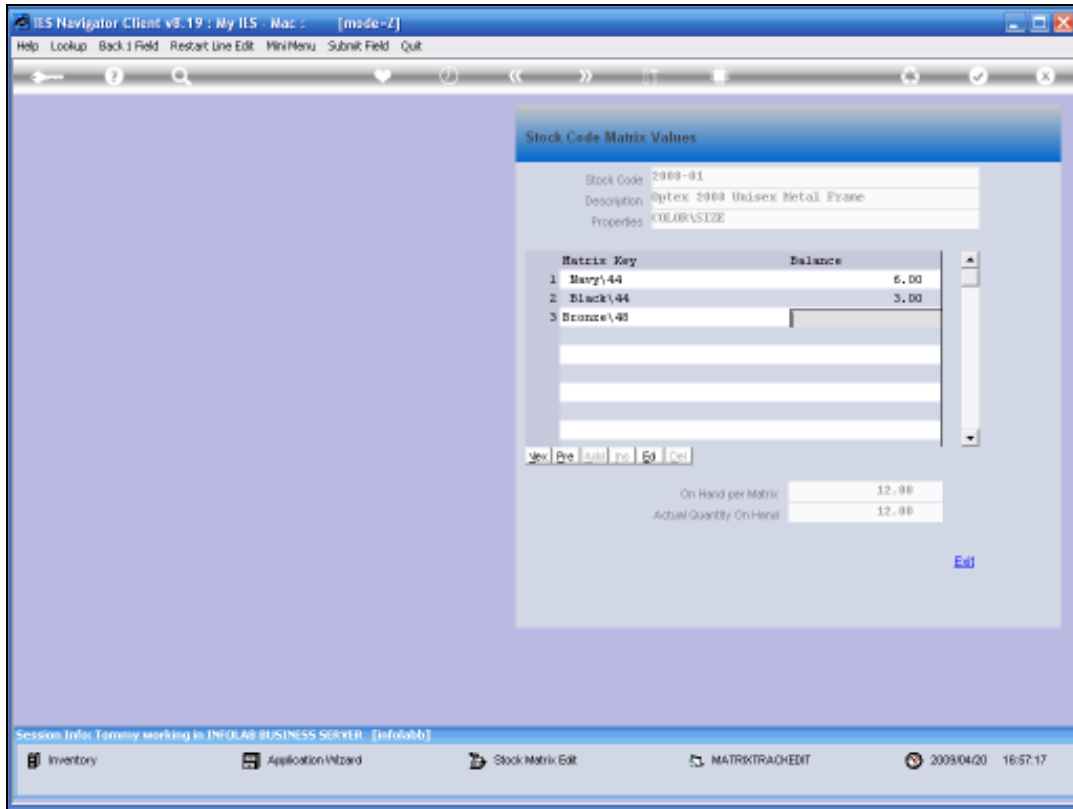
Slide 14

Slide notes:



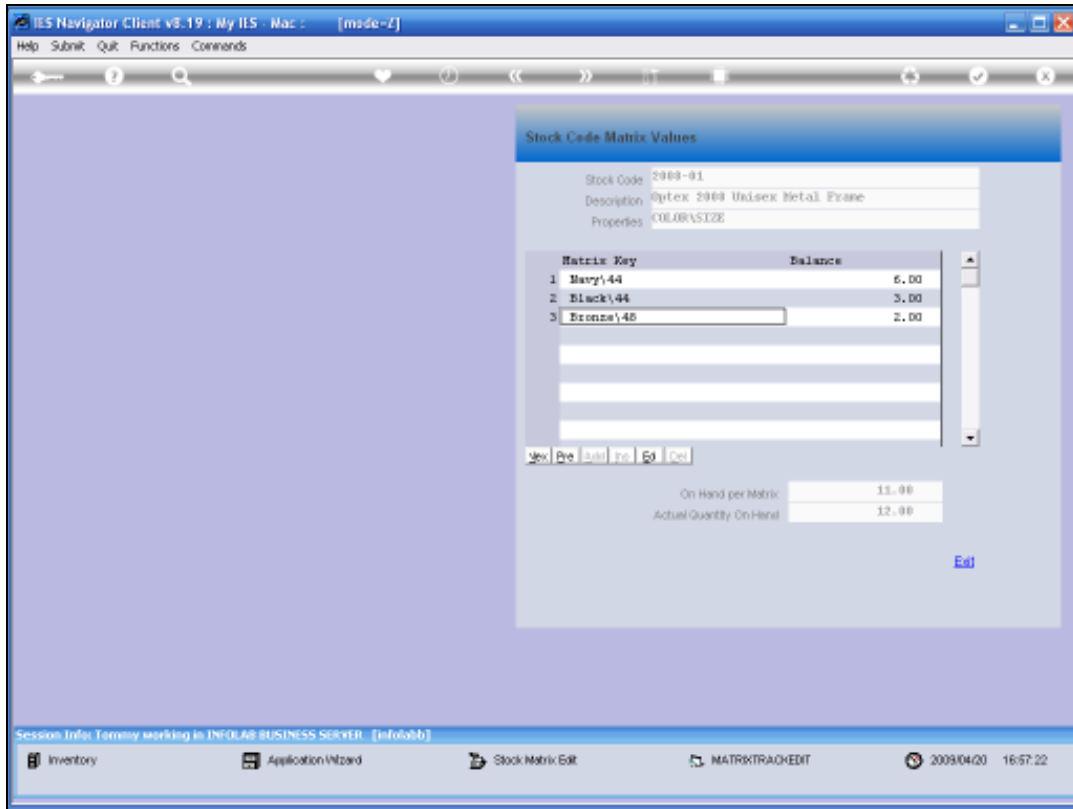
Slide 15

Slide notes: We are allowed to go lower.



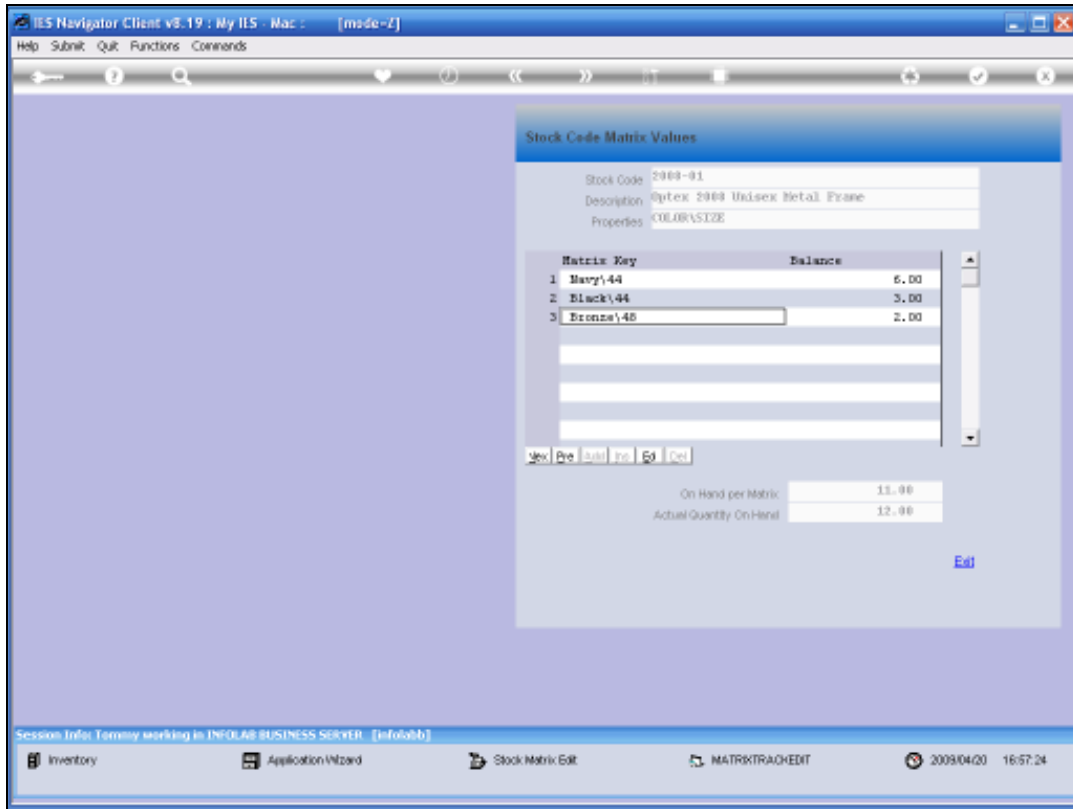
Slide 16

Slide notes:



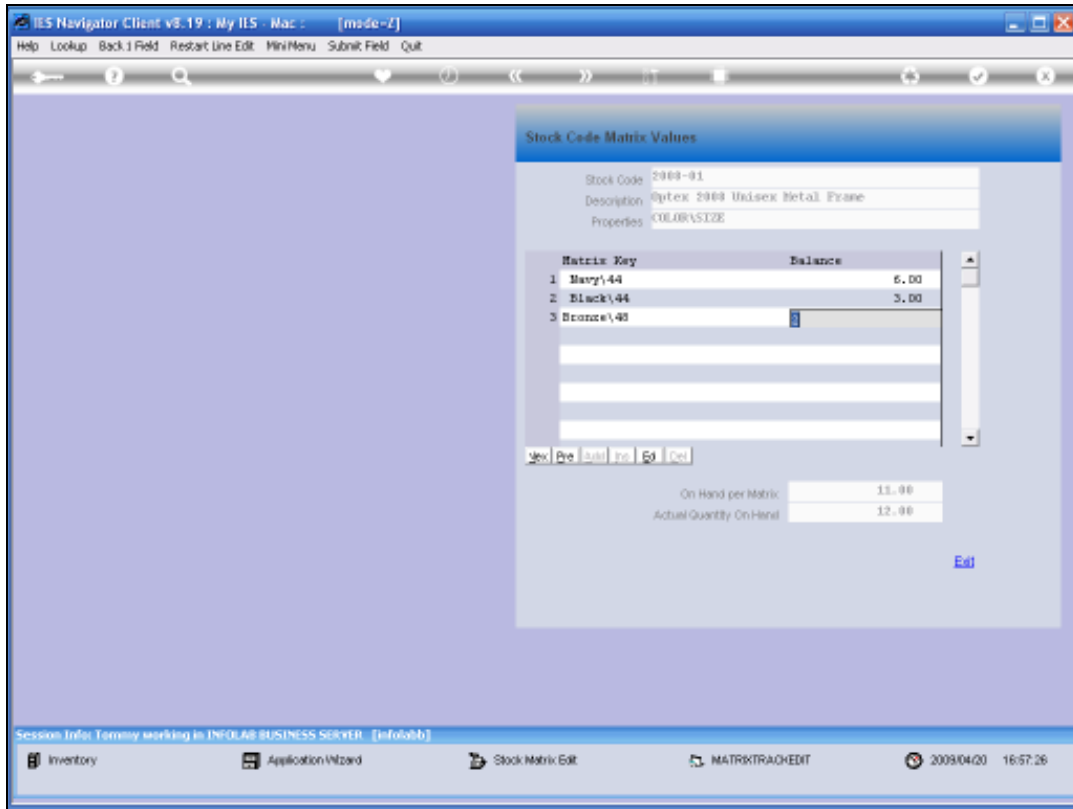
Slide 17

Slide notes:



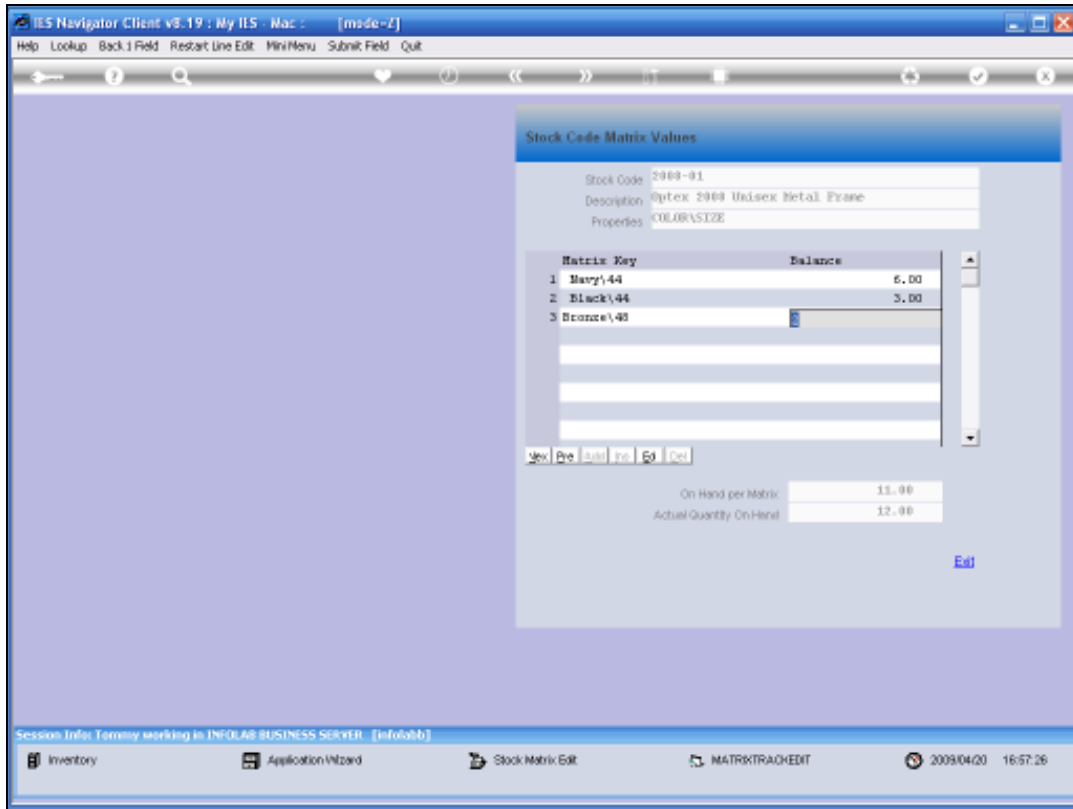
Slide 18

Slide notes:



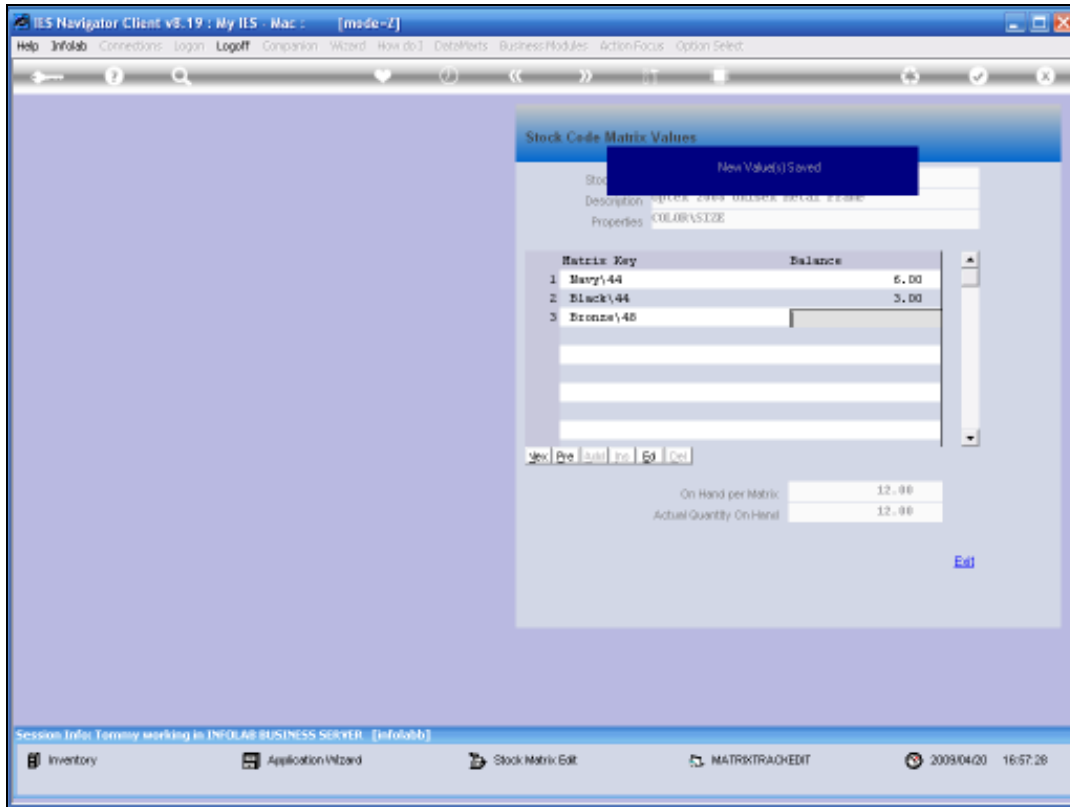
Slide 19

Slide notes:



Slide 20

Slide notes: Now let's change it back to the original value, which was correct.



Slide 21

Slide notes: The system validates and auto saves any changes immediately, so when there are no further changes to be performed, we can just exit.

STOCK CODE ENQUIRY

Stock Code - Stock: 2008-01
 Stock Desc - Account: EACR
 Line Of Issue: EACR
 Last Ord Date: EACR
 High Class: 2384
 Priority: 00
 Successive Date:

Stock: Ornex 3000 Onlook Metal Floor

Last Purch Advice	By	Quantity
1		

[Print Purchase Advice](#) [Reset Ps](#)

Last Worksheet	By	Quantity
1		

[Print Worksheet](#) [Reset Worksheet](#)

Order History

Last Ord No	
Last Invoice	22/09/2008
Last Ord Price	
Last Ord Qty	
Average Cost Price	929.00
Last In Price	
Est Price	

Financial Values

On Order	0.00
Received	0.00
Invoiced	1,900.00
On Hand	1,900.00
Trans Order	0.00

Physical Quantities

On Hand	0.00
On Hand	0.00
Trans In	0.00
On Order	0.00
Received	0.00
Invoiced	22.00
ON HAND	22.00
Trans Order	0.00
Pending	0.00
On Receipt	0.00
Trans Out	0.00
AVAILABLE	22.00

Views:

- [Drill PO Costs](#)
- [Drill PO Values](#)
- [Drill PO Quantities](#)
- [Drill PO Dates](#)
- [Query Make Values](#)
- [Edit Make Values](#)
- [Inventory Drill](#)

When the Stock Values are not what you expected...

Slide 22
 Slide notes:

The screenshot displays the ILS Navigator Client interface. The main window is titled "STOCK CODE ENQUIRY" and "Order History".

Stock Code Enquiry Section:

- Stock Code - Stock: 2008-DL
- Stock Book Account: EACR
- Line Of Issue: EACR
- Unit Of Issue: EACR
- High Class: 2384
- Priority: 00
- Secondary Dtl:

Order History Section:

Last Ord No	
Last Recvd	22/09/2008
Last Ord Price	
Last Ord Qty	
Average Cost Price	929.00
Last In Price	
Est Price	

Financial Values Section:

On Order	0.00
Received	0.00
Issued	1,900.00
On Hand	1,900.00
Trans Quant	0.00

Physical Quantities Section:

On Request	0.00
On Hold/Reserve	0.00
Trend In	0.00
On Order	0.00
Received	0.00
Issued	12.00
ON HAND	12.00
Trans Quant	0.00
Pending	0.00
On Reserve	0.00
Trend Out	0.00
AVAILABLE	12.00

Views and Links:

- Drill PO Costs
- Query Make Values
- Edit Make Values
- Make Qty Drill

Footer: When the Stock Values are not what you expected...

Slide 23
Slide notes: