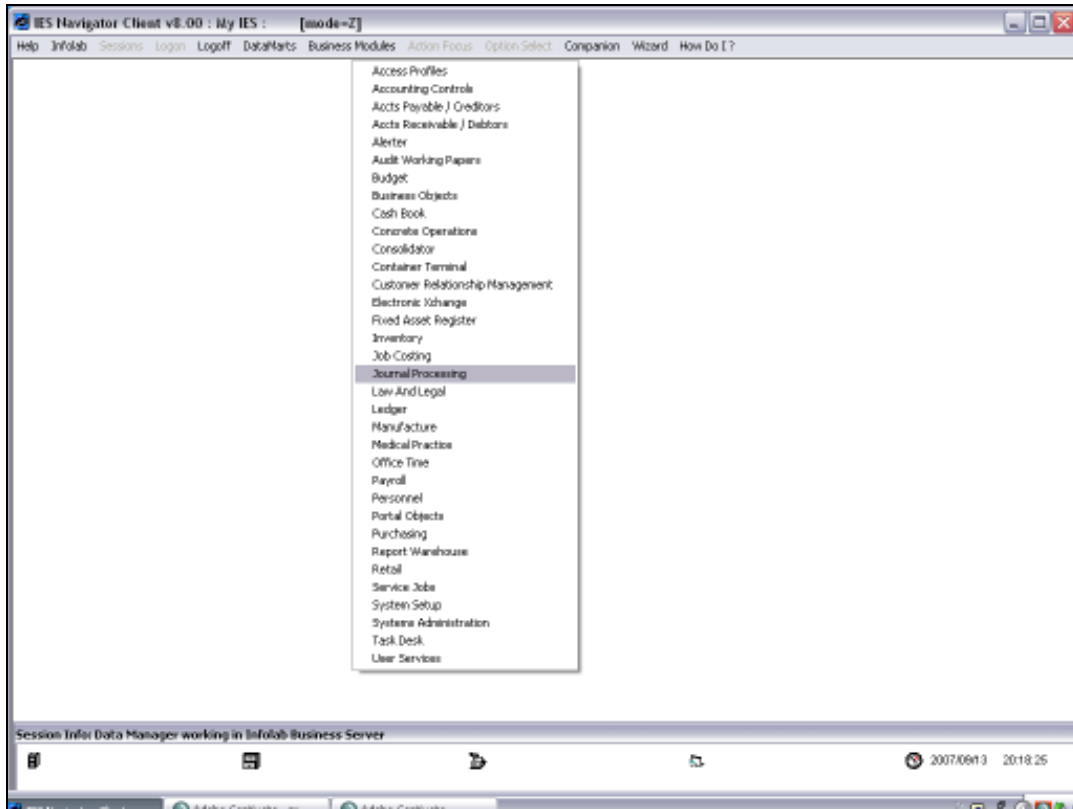




Slide 1

When we work with User Profile Administration and we work with Menu Access, we are essentially working with Menu Paths that lead to Menu Options that the Users may Open and Perform or Execute.

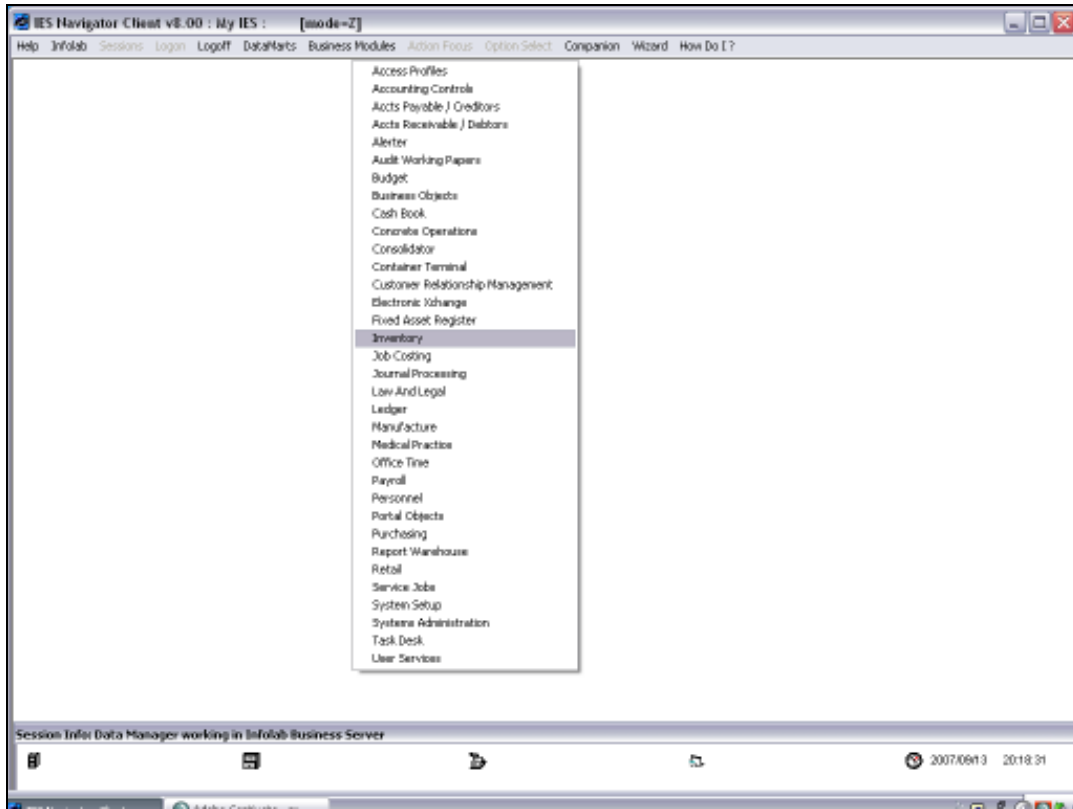
So in this Tutorial we answer the Question: What is a Menu Option?



Slide 2

Now I am starting with a Menu Path.

I am selecting an Application called Inventory.

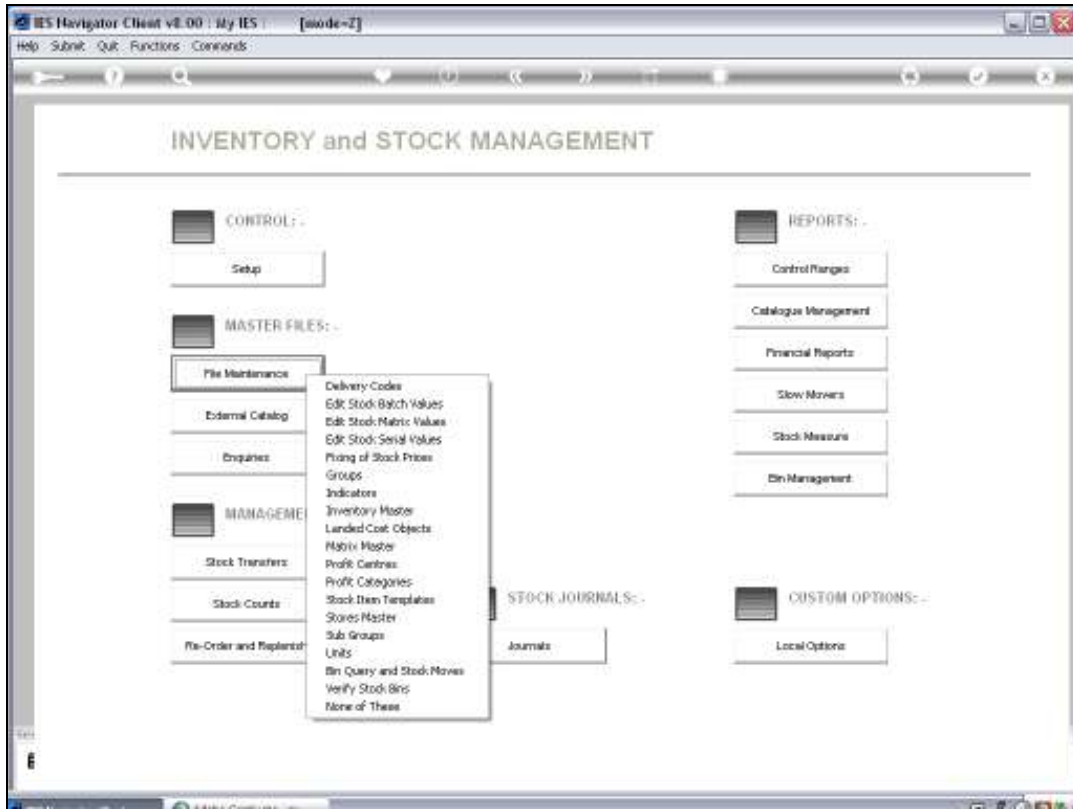


Slide 3



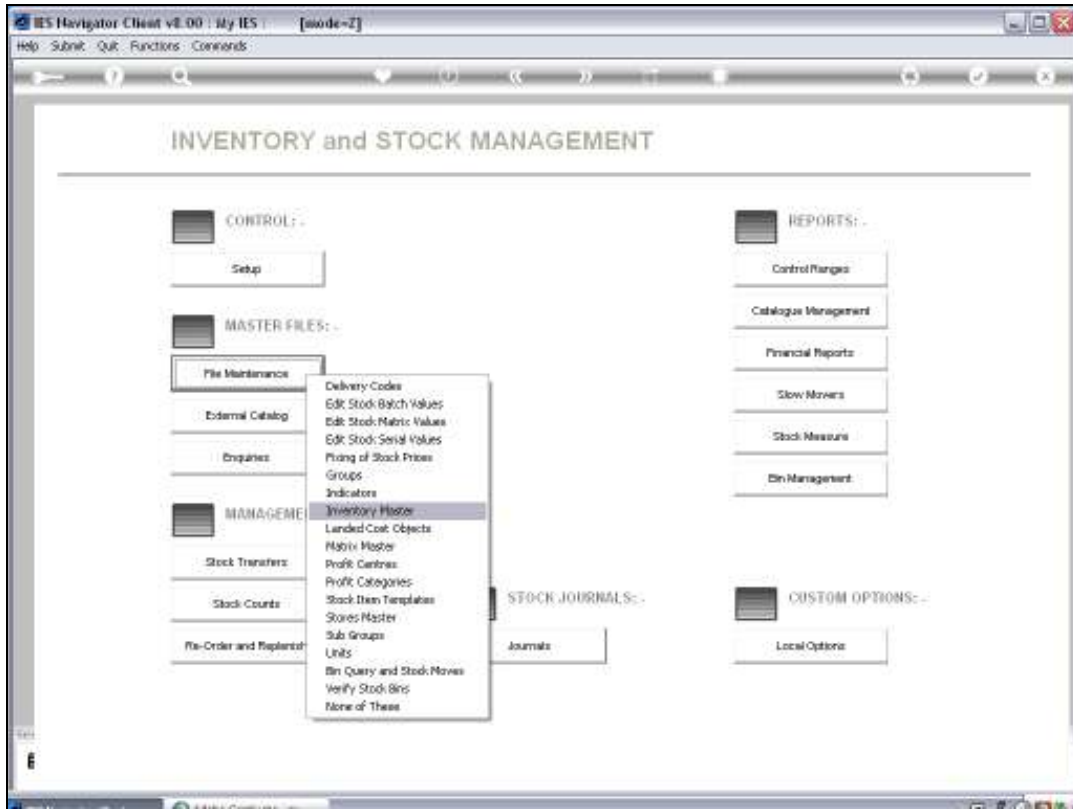
Slide 4

From the Actions I choose File Maintenance.



Slide 5

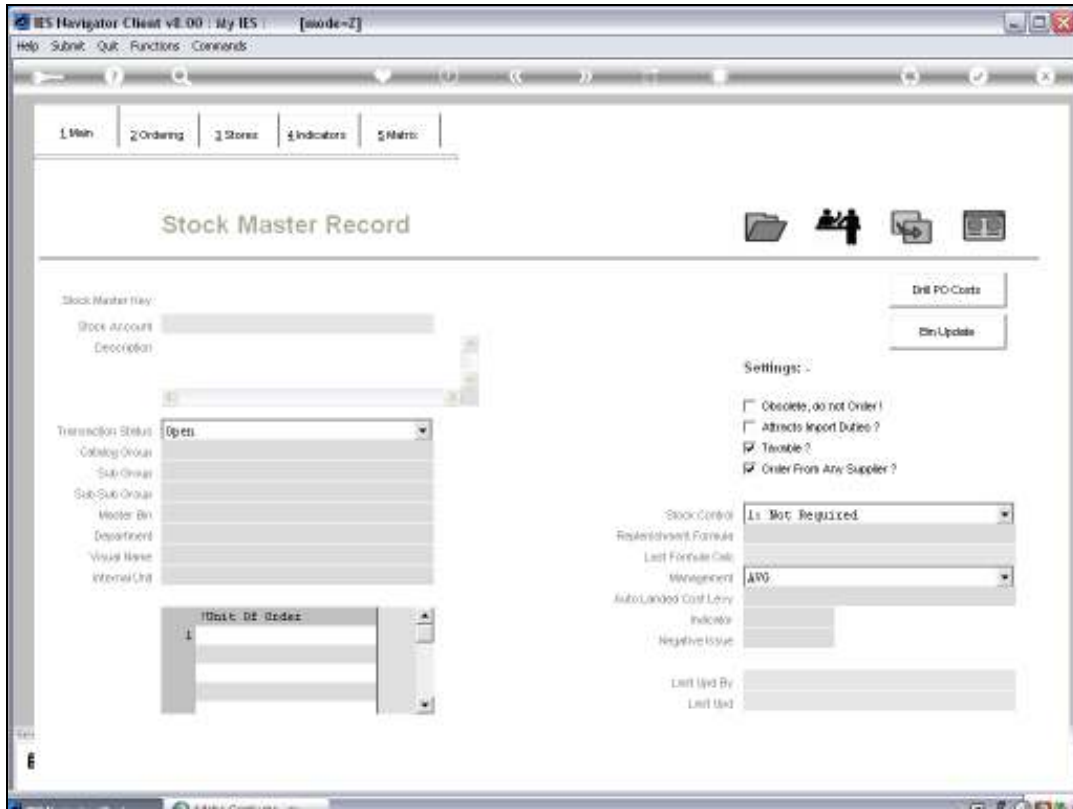
And from the Options I choose Inventory Master.



Slide 6



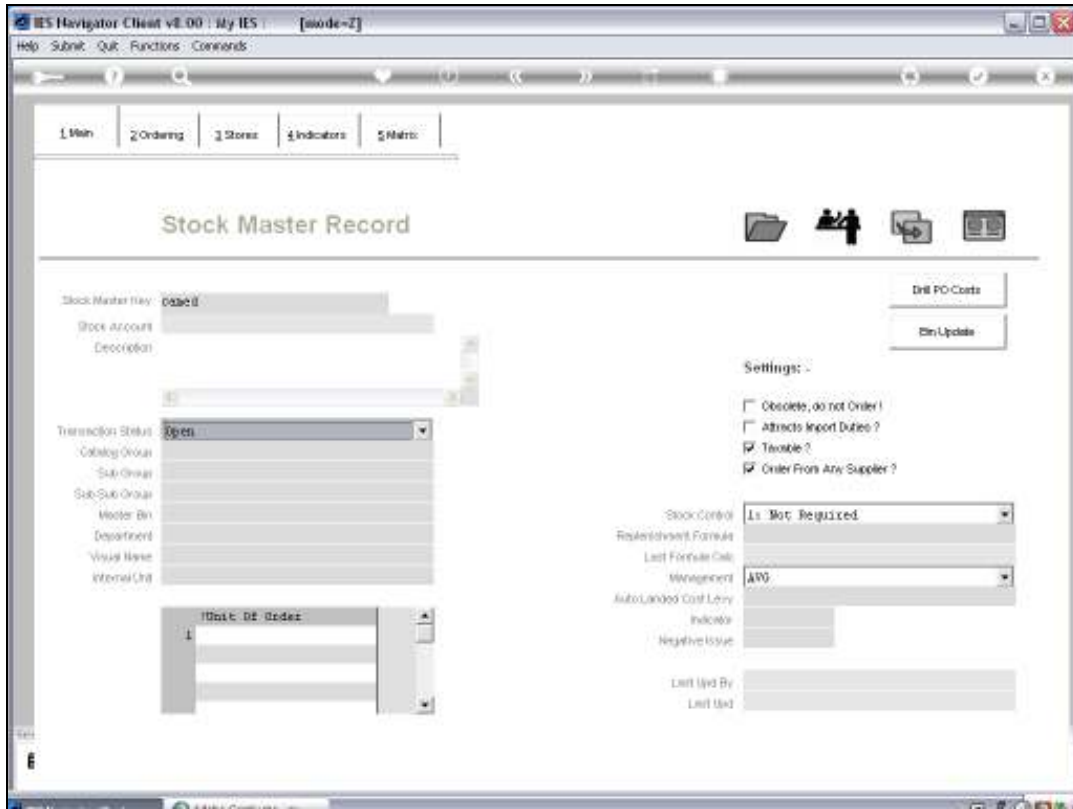
Slide 7



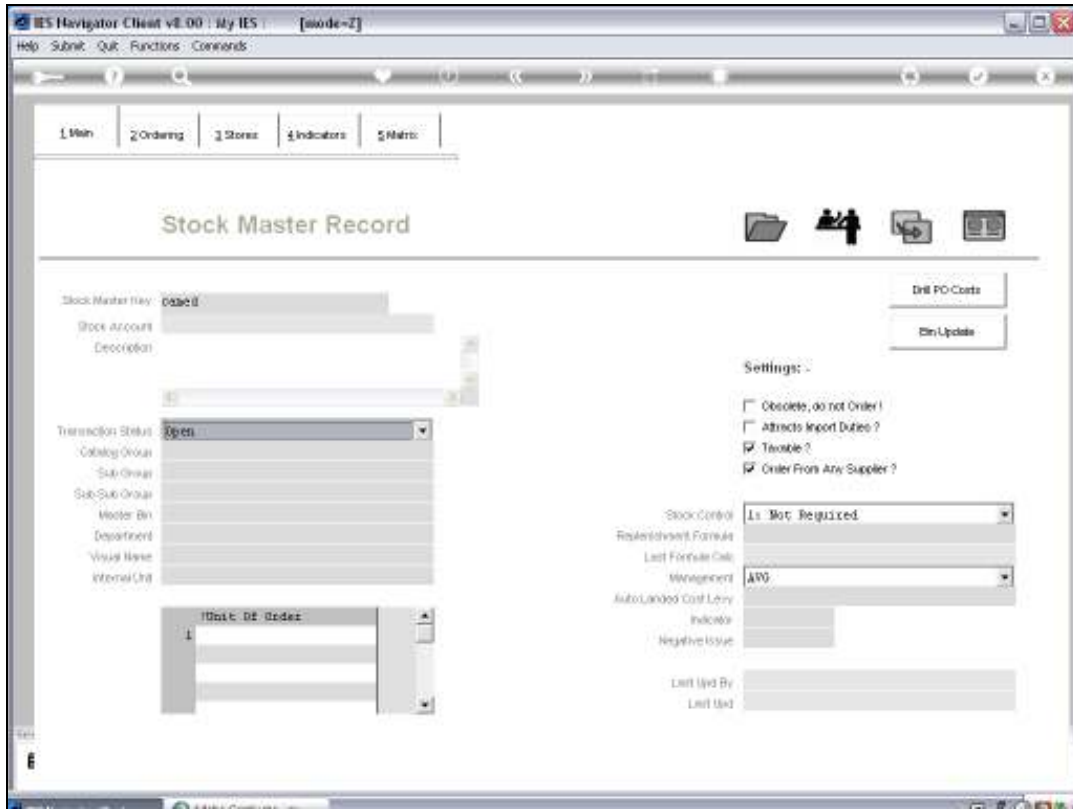
Slide 8

And now I have effectively opened a Menu Option. So this is a Menu Option.

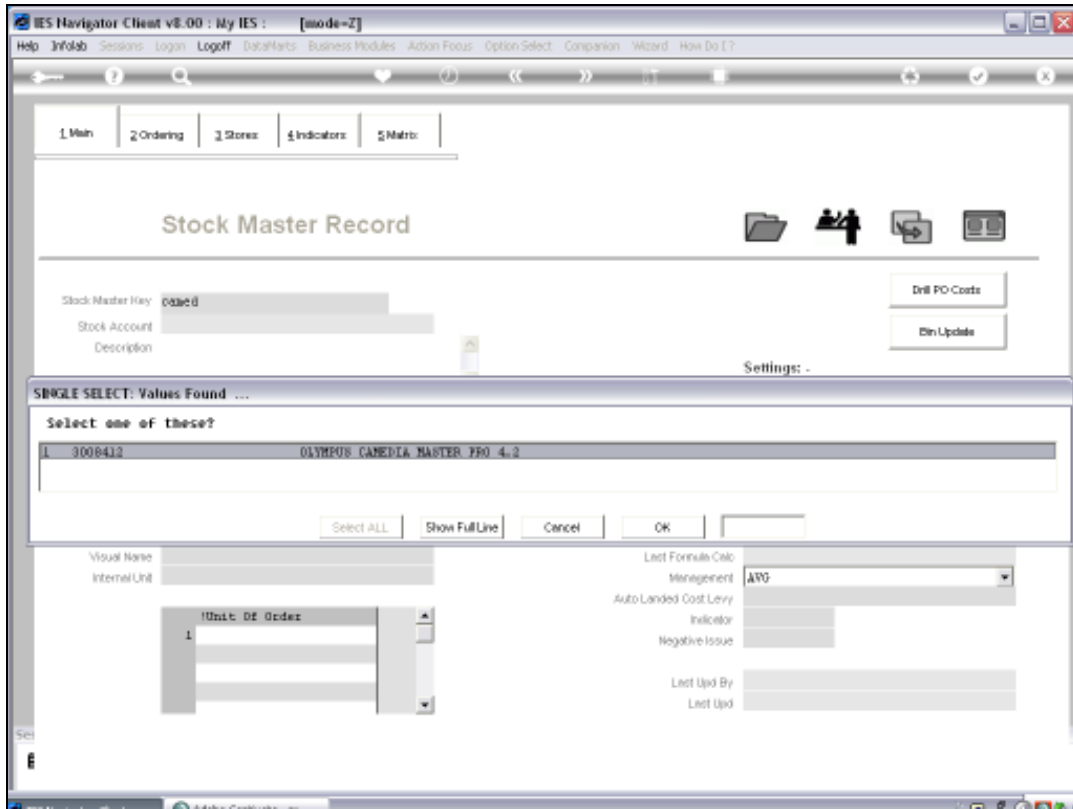




Slide 9

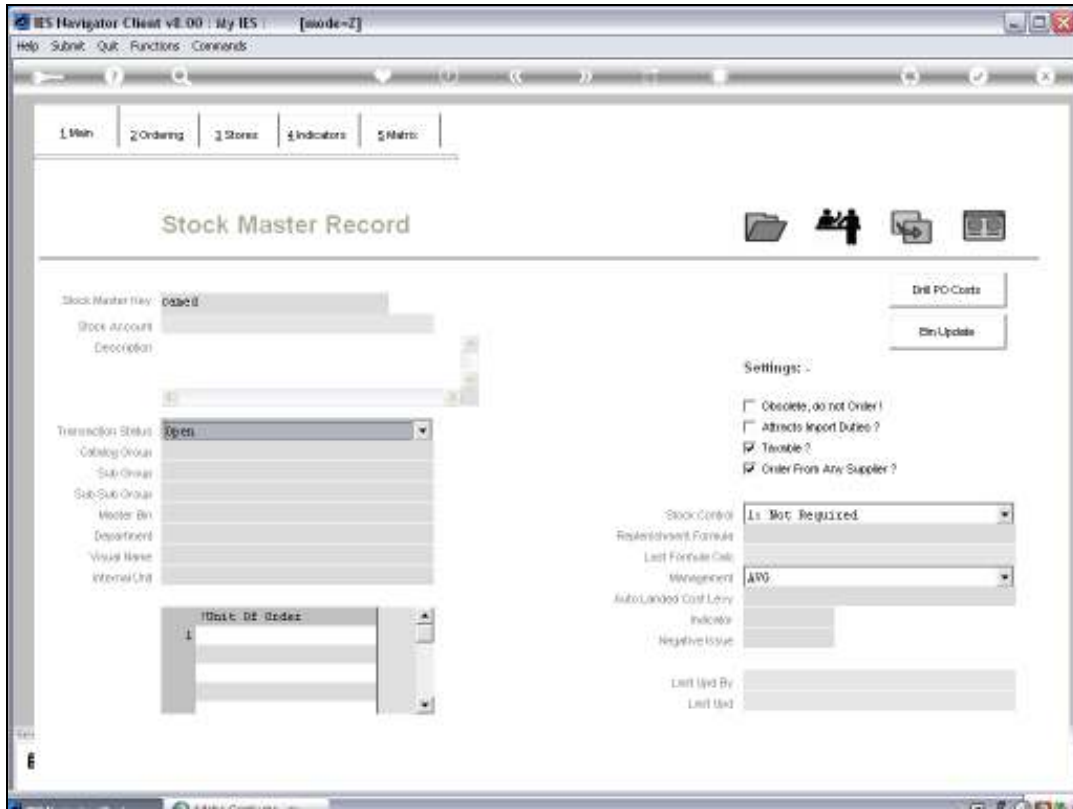


Slide 10



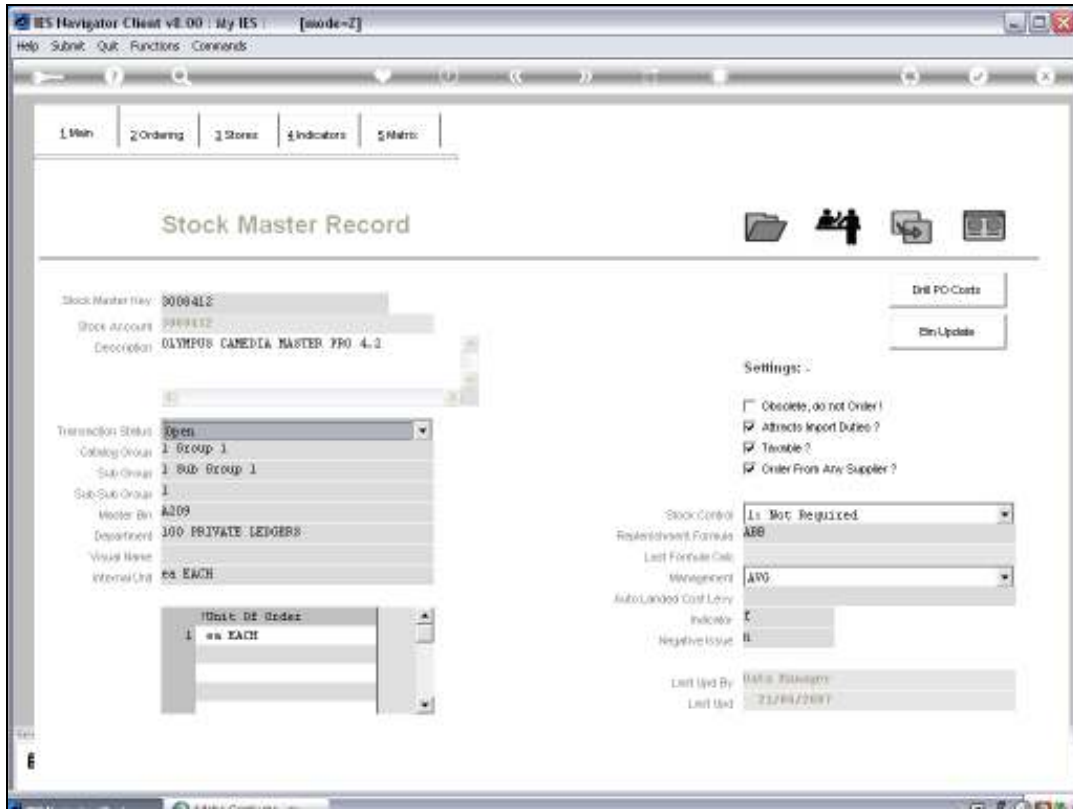
Slide 11

Now I am going to recall an existing Stock Code.

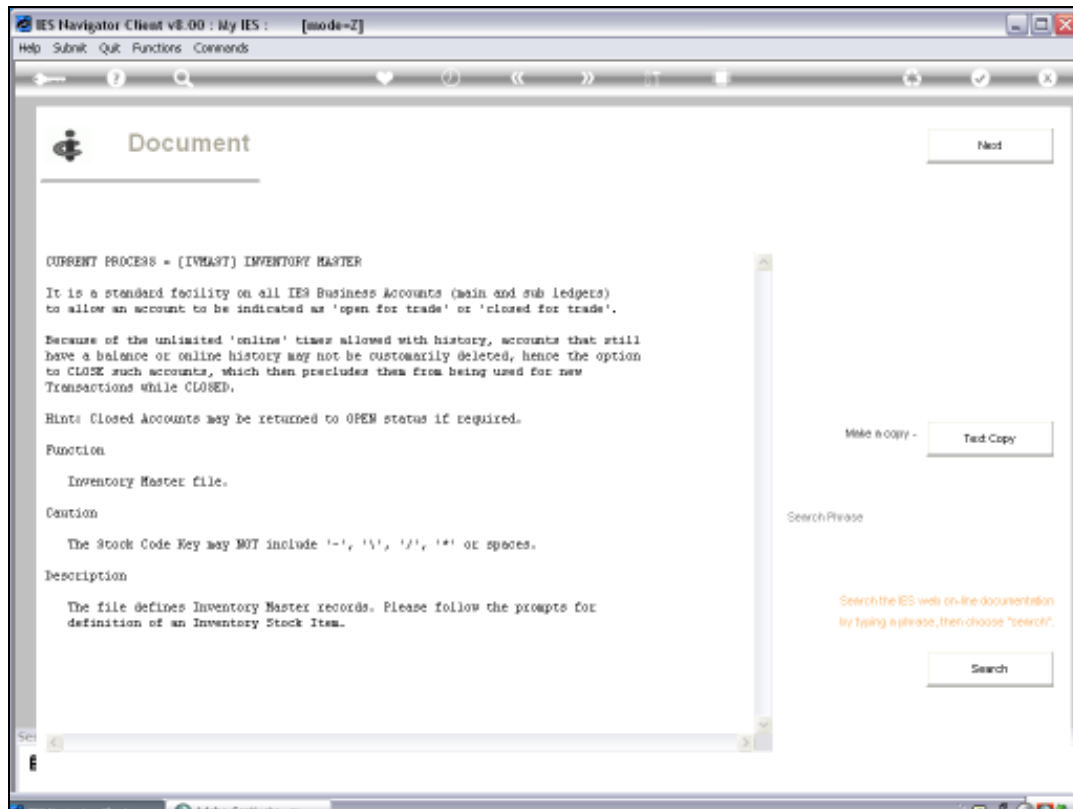


Slide 12

And then I am going to press Help - F1.

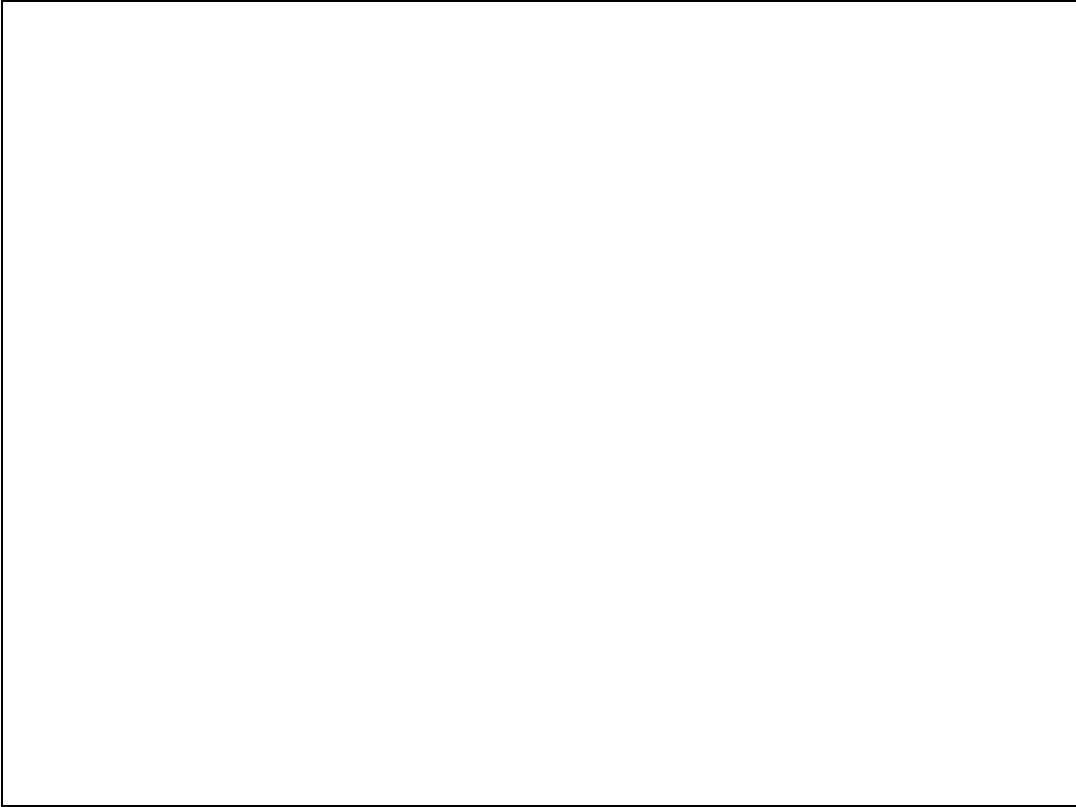


Slide 13

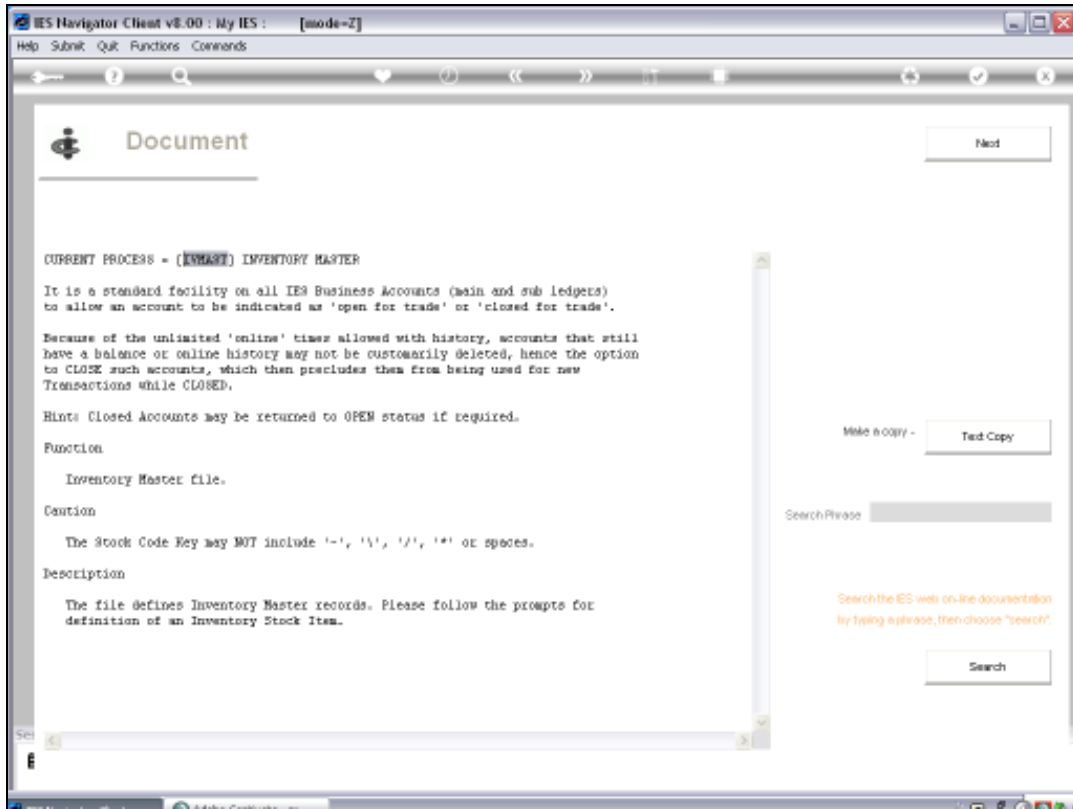


Slide 14

In this case to show that when we get Help on any Process that we are working with, then apart from the Help that we get, at the top we get a Key, the Current Process Key, in square brackets [ivmast].

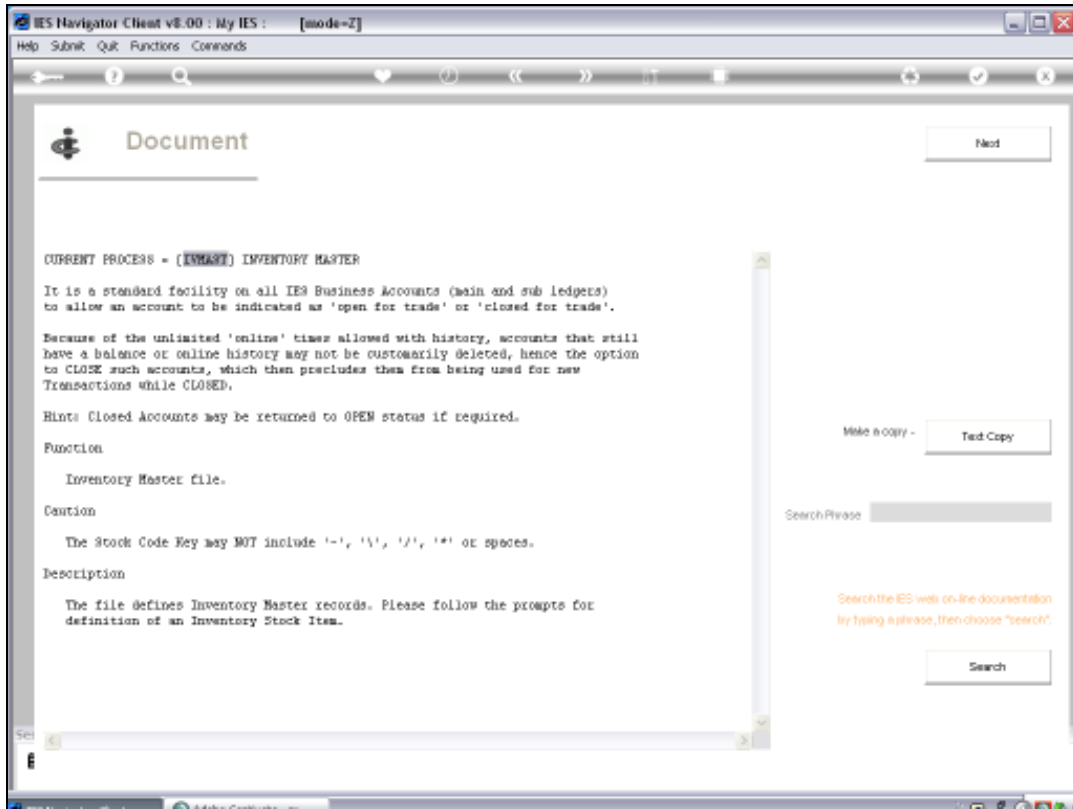


Slide 15



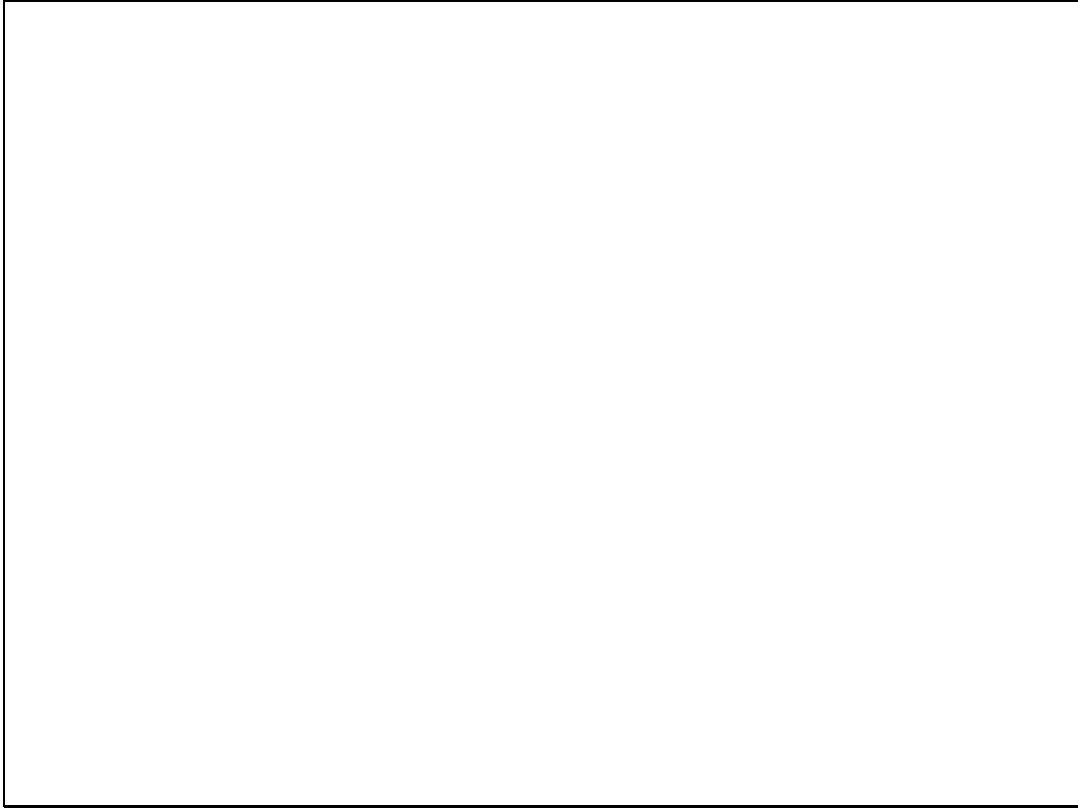
Slide 16



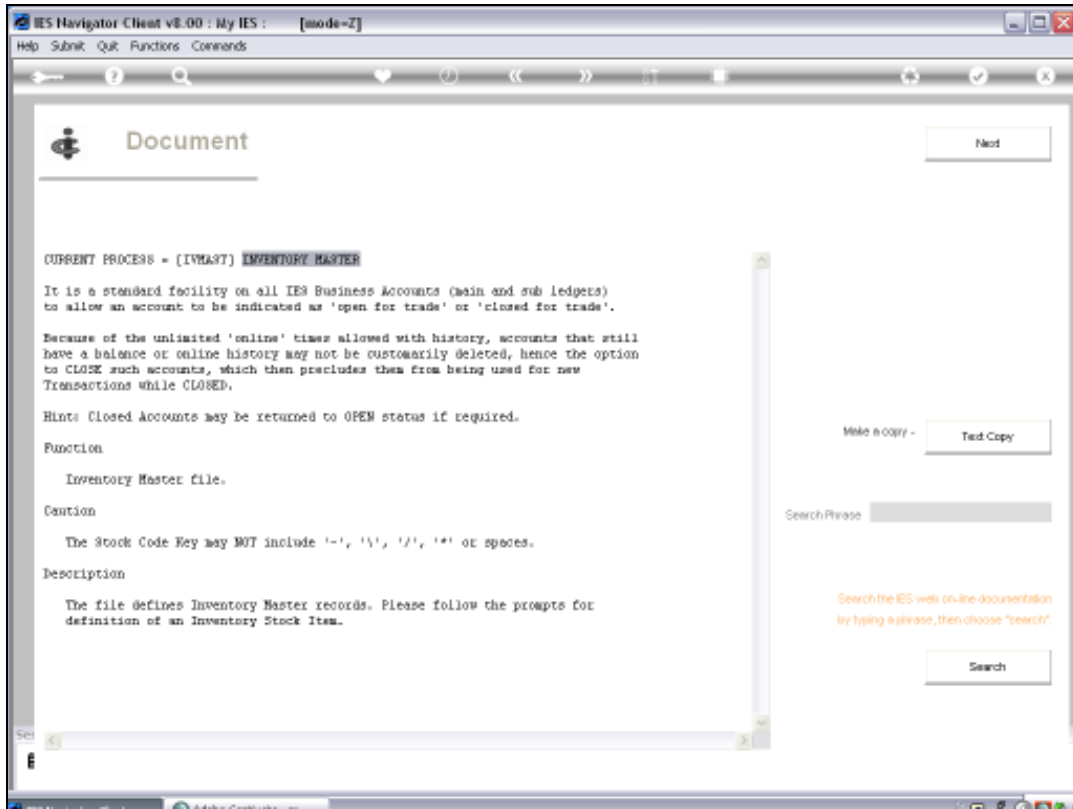


Slide 17

That is the Menu Option Key in the Process Library.

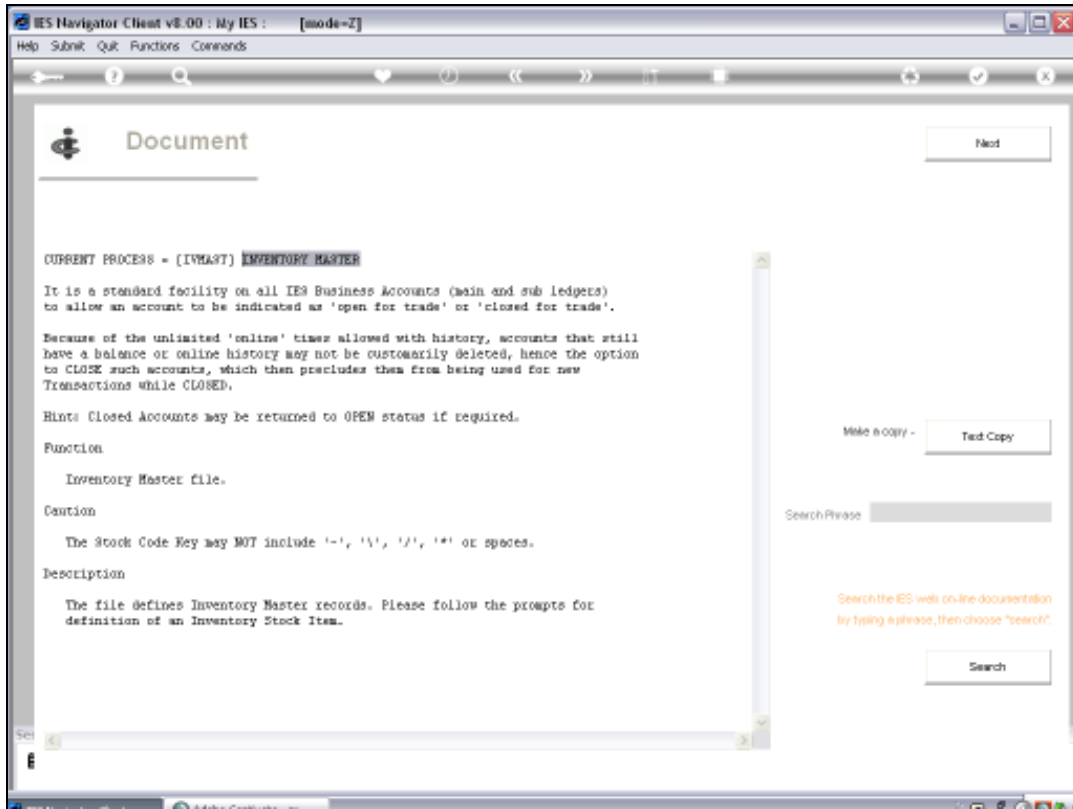


Slide 18

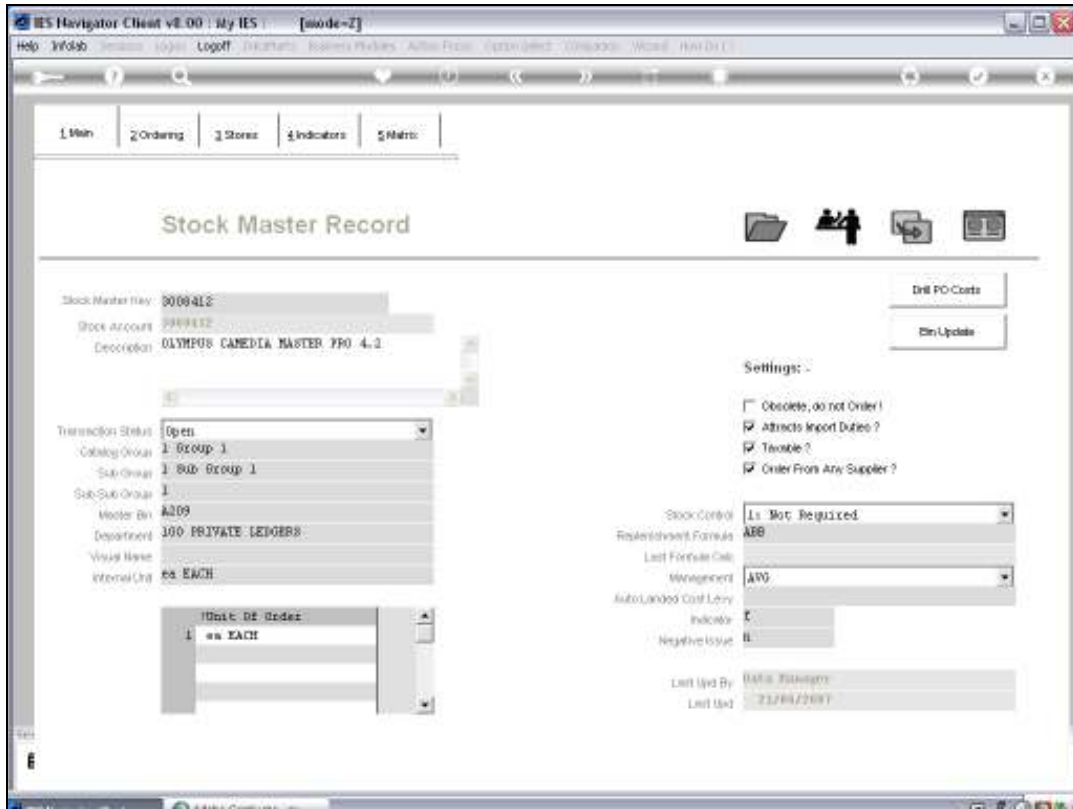


Slide 19

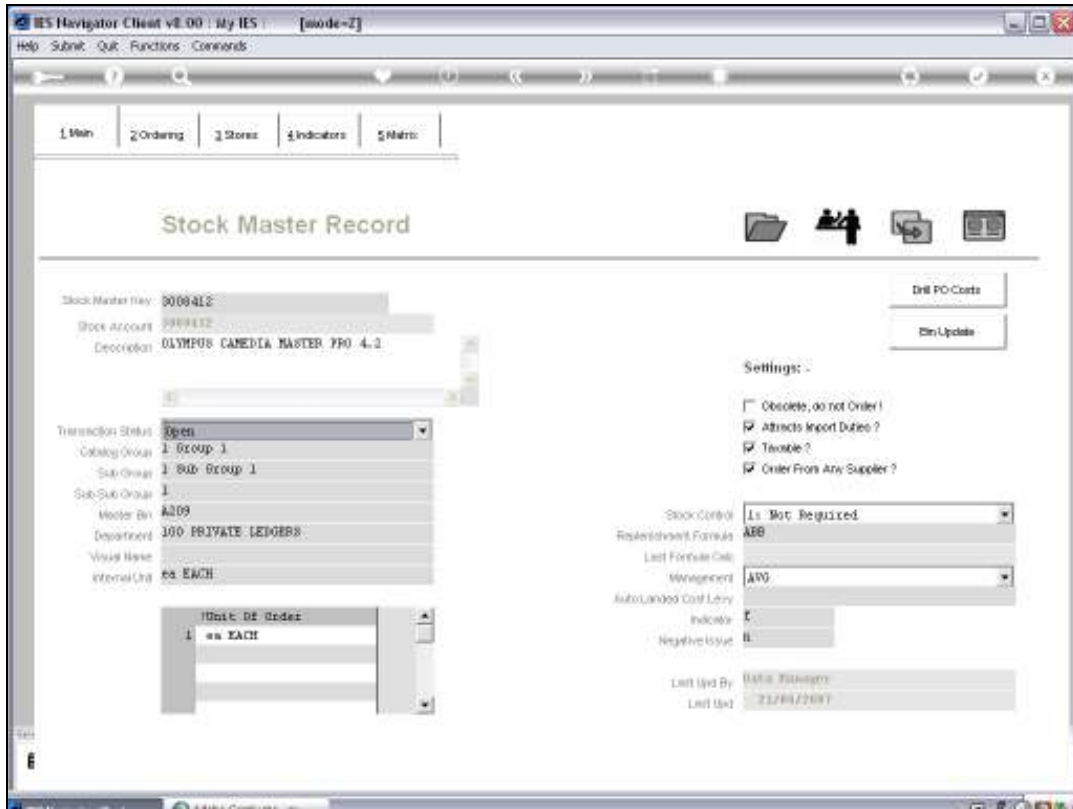
This is the Menu Description or Name.



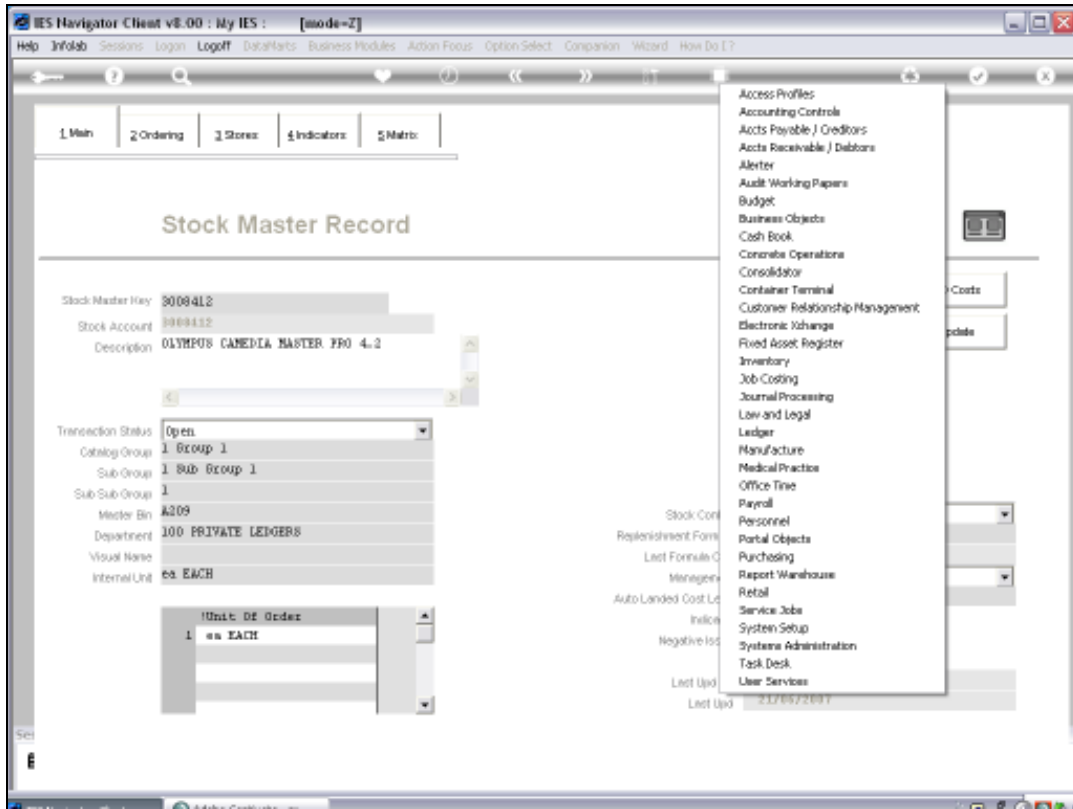
Slide 20



Slide 21

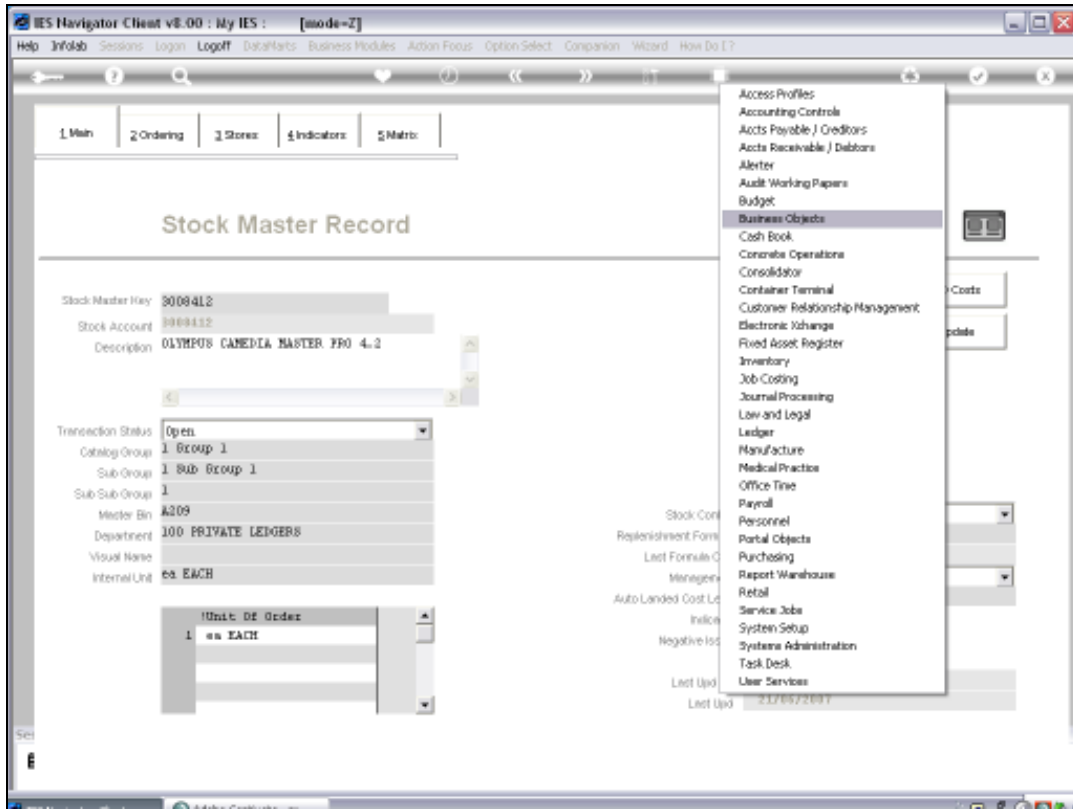


Slide 22



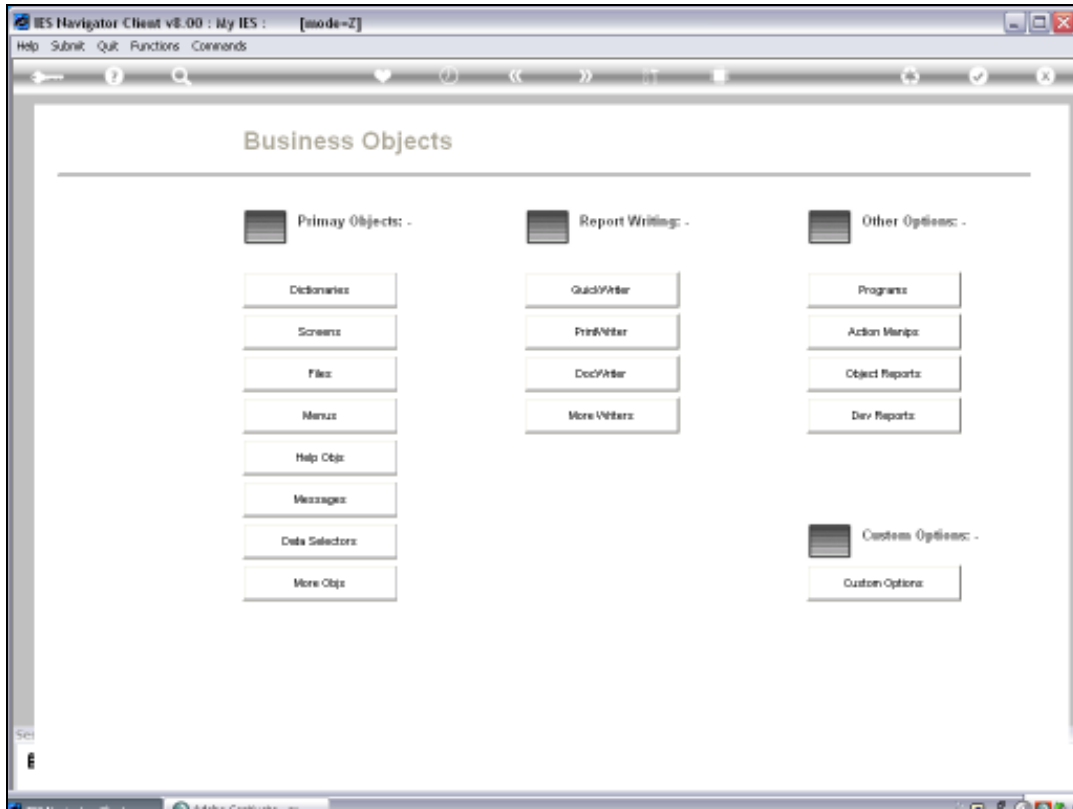
Slide 23

So if I Exit that and I Open the Business Objects.



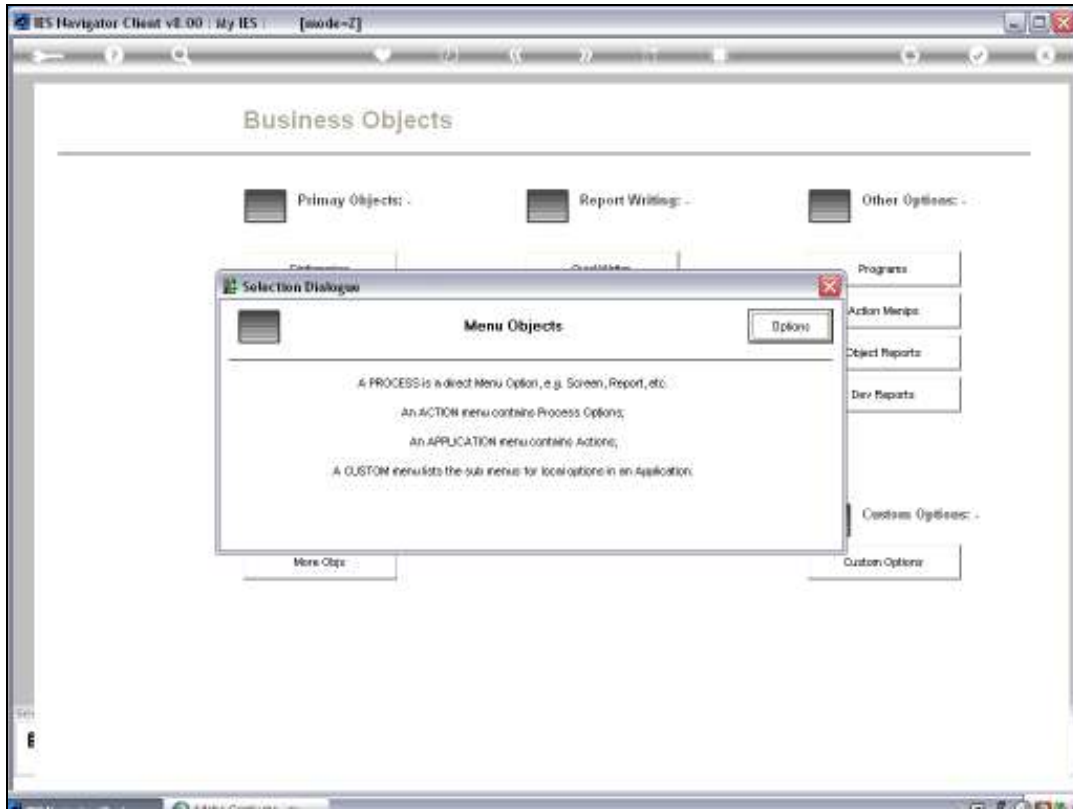
Slide 24



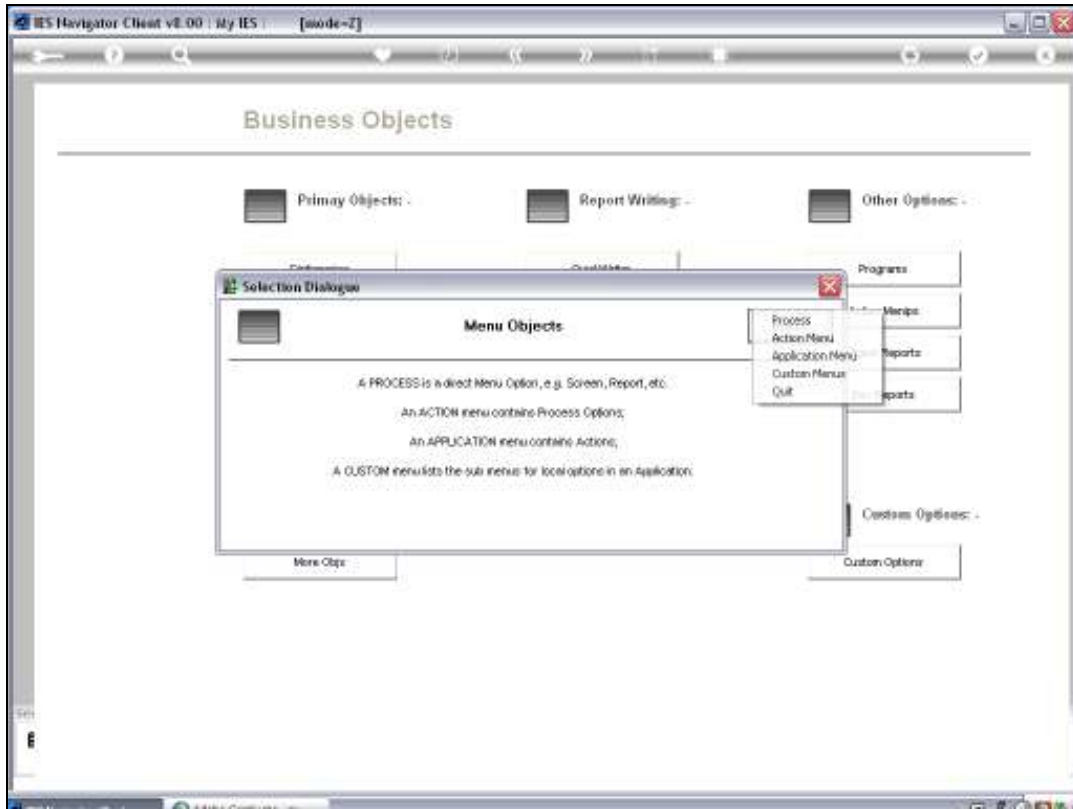


Slide 25

And I choose Menus.

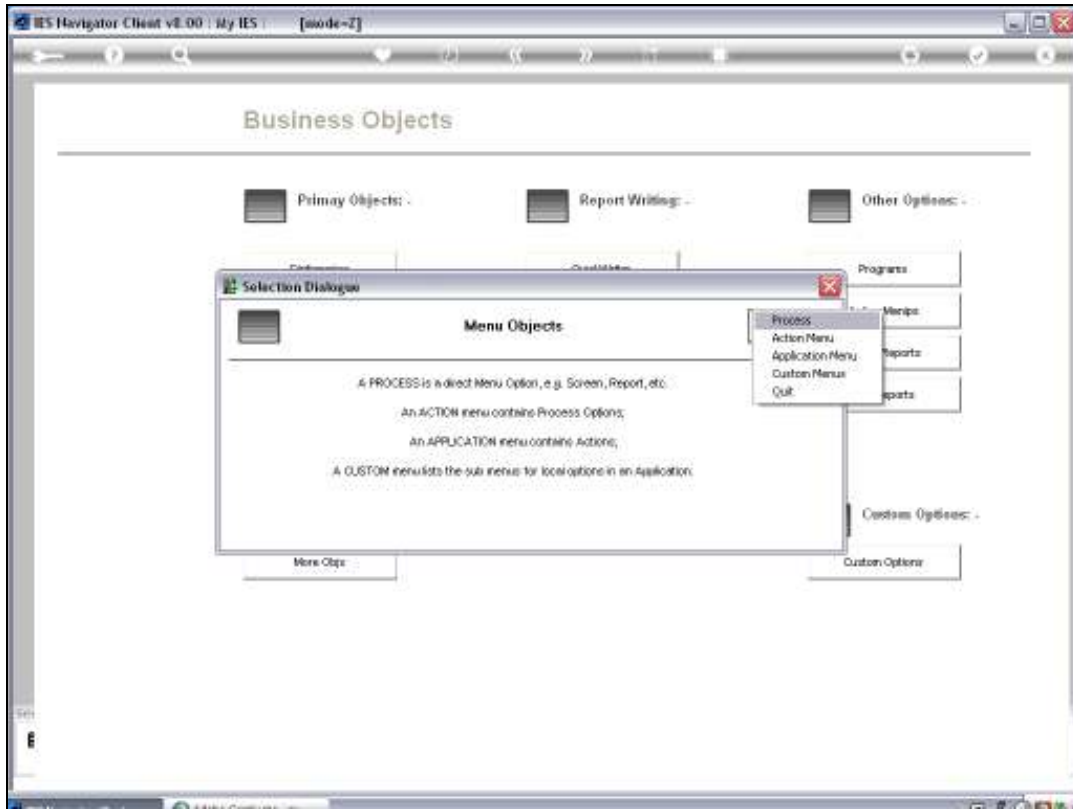


Slide 26

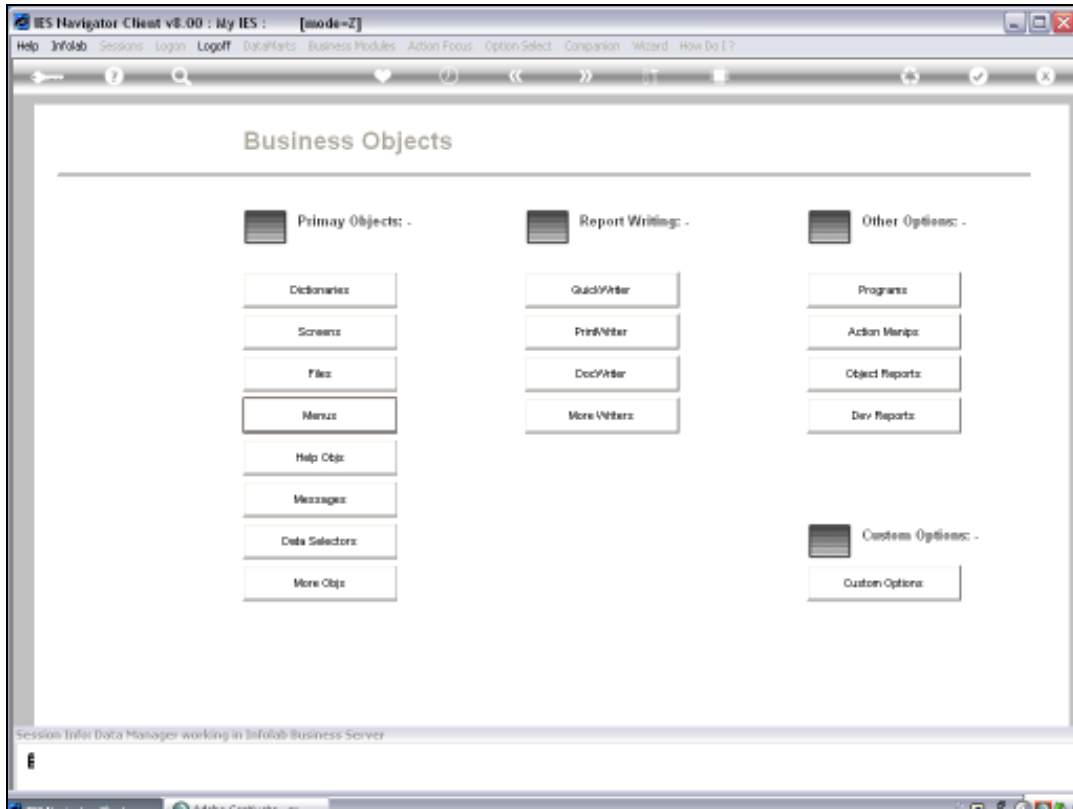


Slide 27

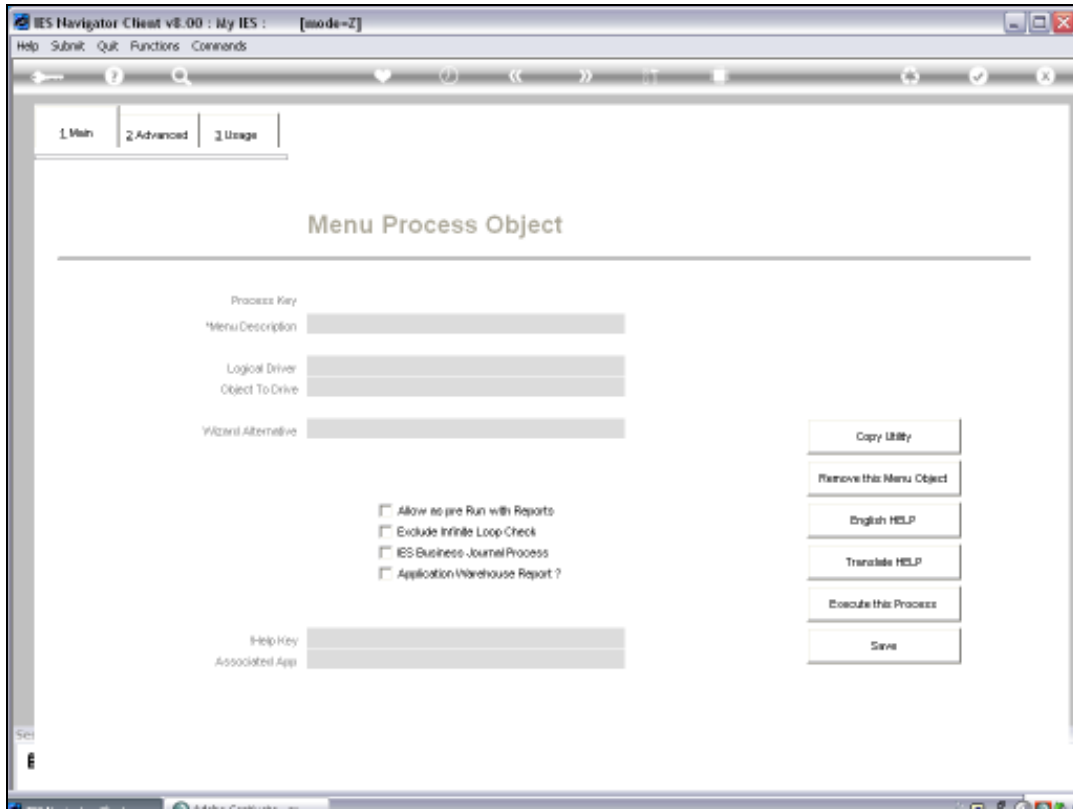
Then If I choose Process, I am entering a Menu Options Library called the Process Library.



Slide 28

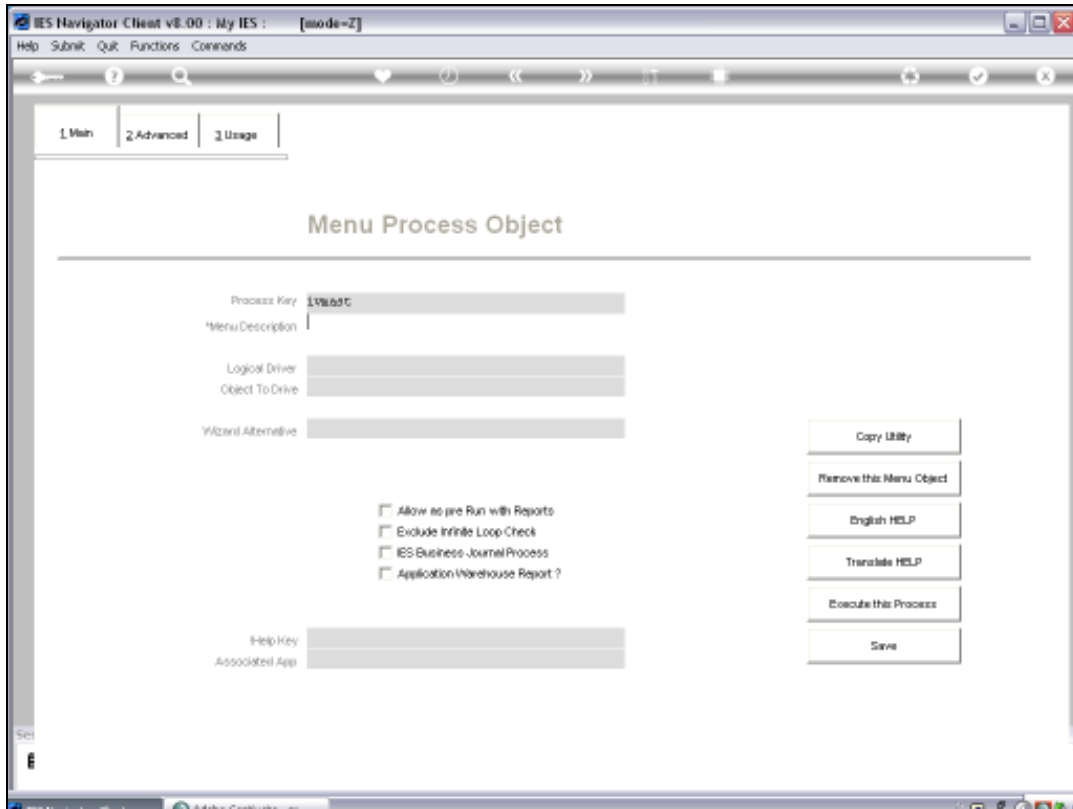


Slide 29

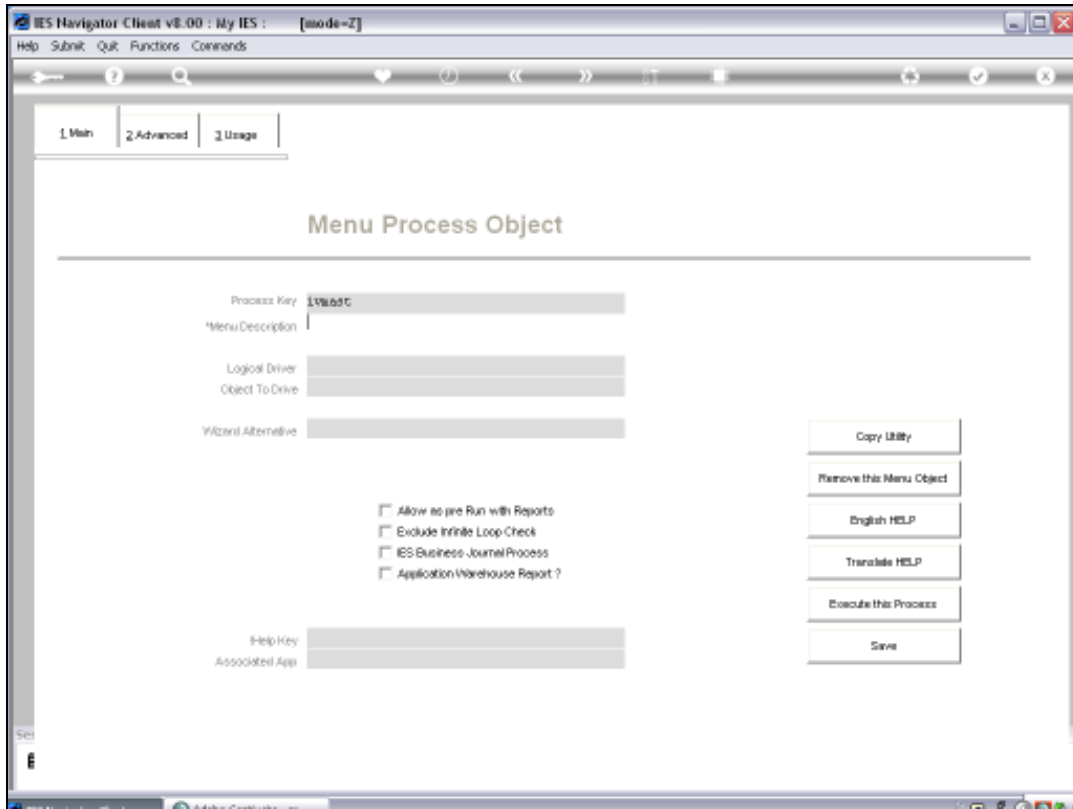


Slide 30

And if I type that Key here: ivmast.

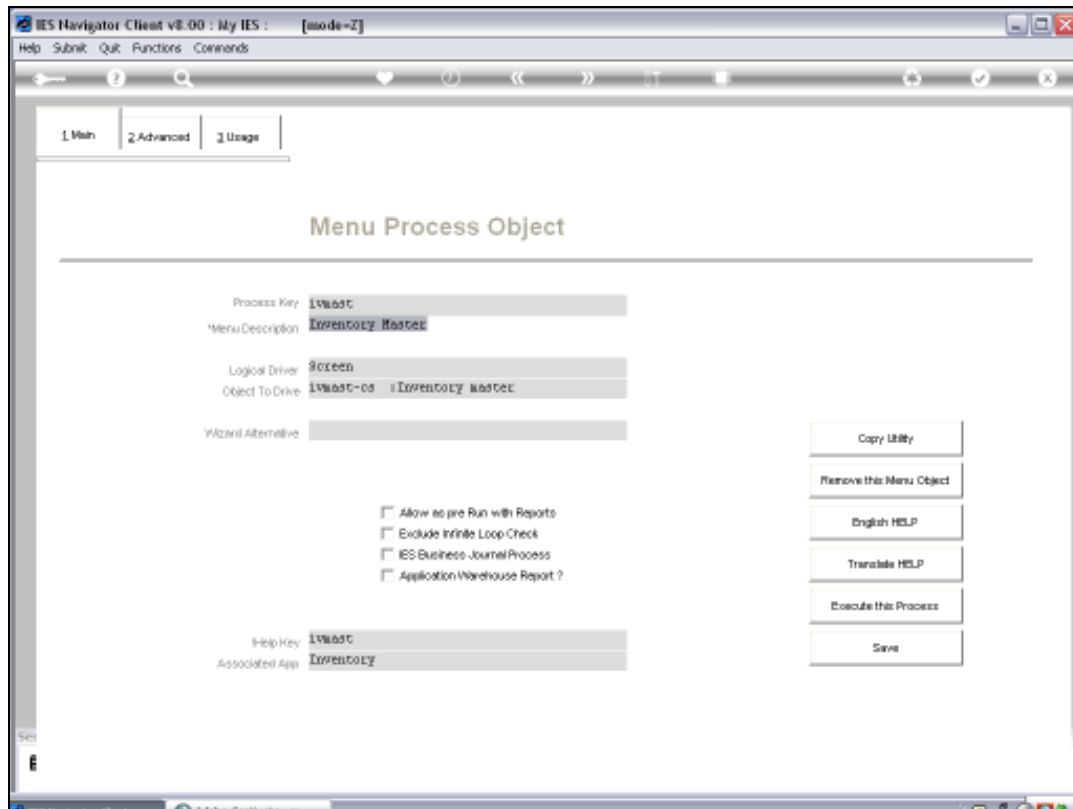


Slide 31



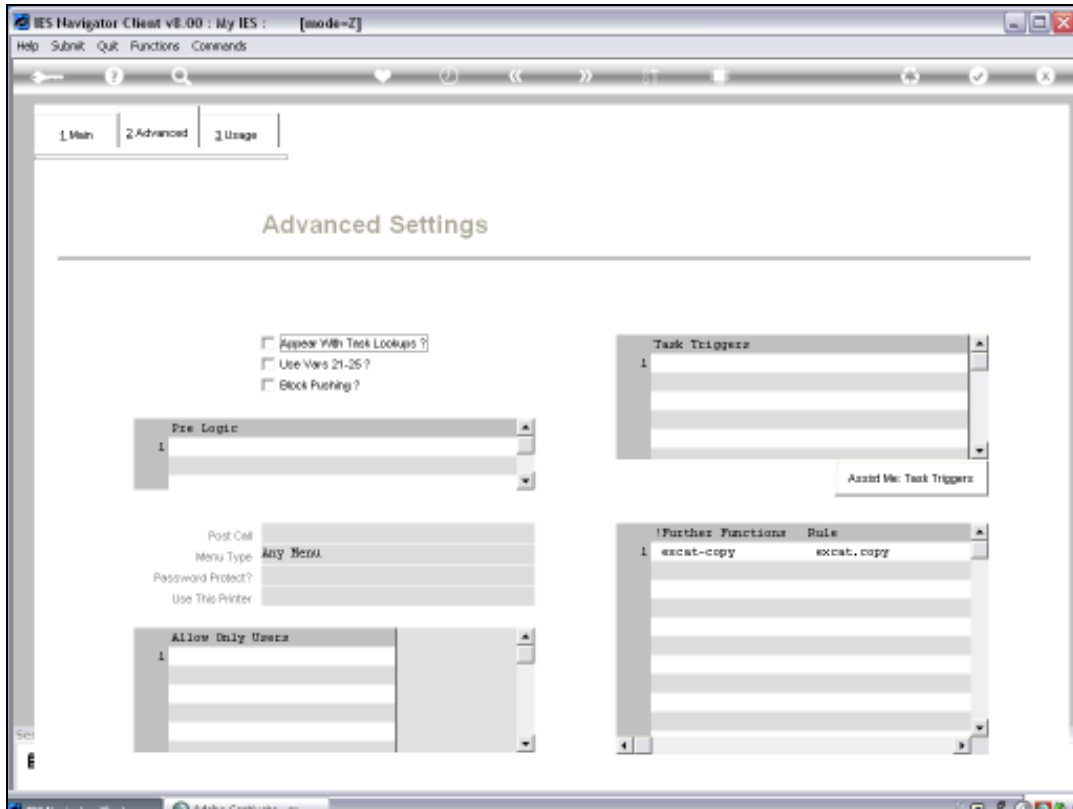
Slide 32





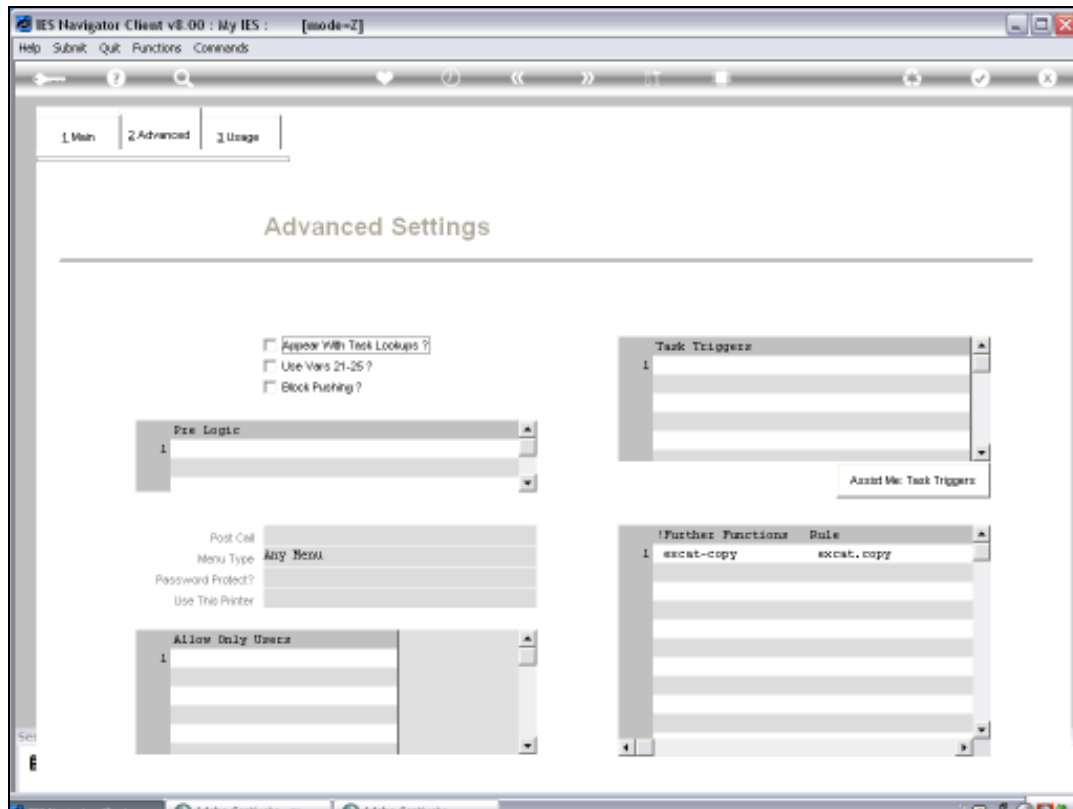
Slide 33

Then we see the Menu Description coming up. "Inventory Master" and this actually calls a screen. So this Menu Process is in fact a Screen. But the point is it is a Menu Option.



Slide 34

And it will always be listed with a Menu Type of "Any Menu".



Slide 35

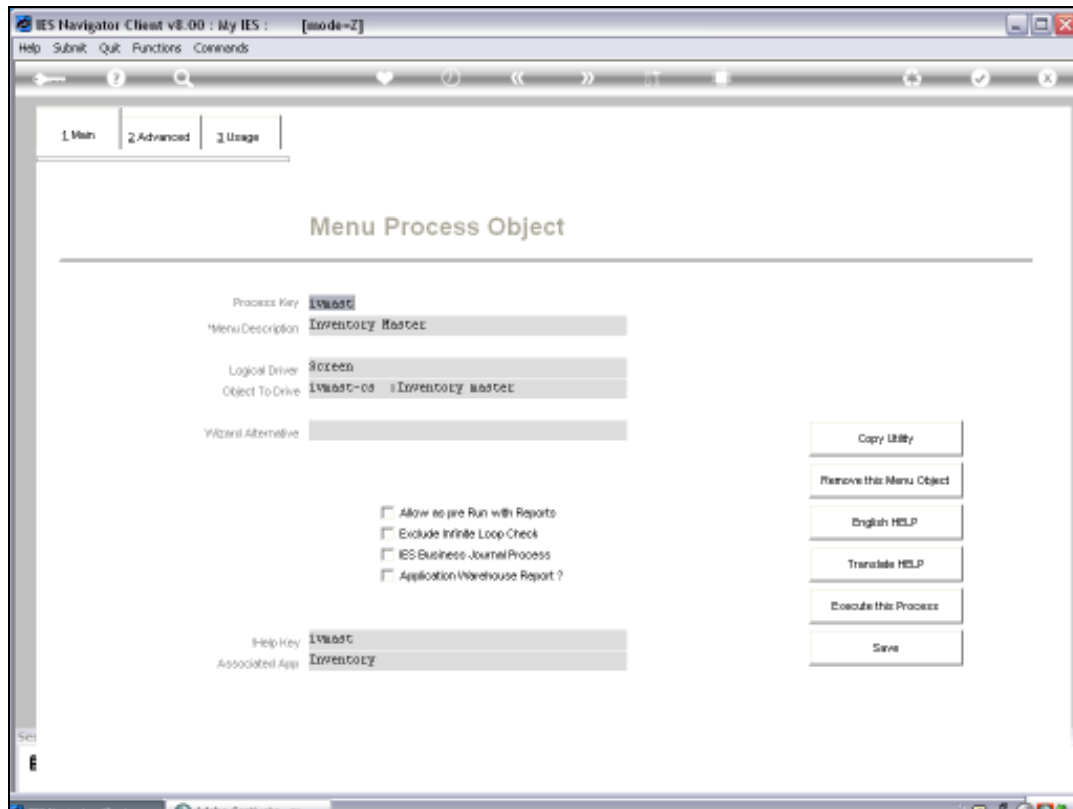
It is so that there are also Processes in the Process Library that do not say "Any Menu" and they say "No Menu" or "Control Menus Only".

Those Objects cannot be provided on a Menu Path as a Menu Option.

But they are still Processes and they are typically called by other Processes, and in many cases they are called from these Options, that we call Menu Options.

But essentially a Menu Option is an Object that we will find in the Process Library and listed as available with any Menu.

In other words we can put it on the User Menu.



Slide 36

So the Application is not a Menu Option.

The Action is not a Menu Option.

They are merely Sign Posts, but they lead the Path or the Route to arrive at a Menu Option, which a User can Perform or Execute.

In other Words a Menu Option is really an Option that we will find in the Menu Process Library and we can include it on a Menu Path as the final destination of the Menu Path.

That is what a Menu Option is.