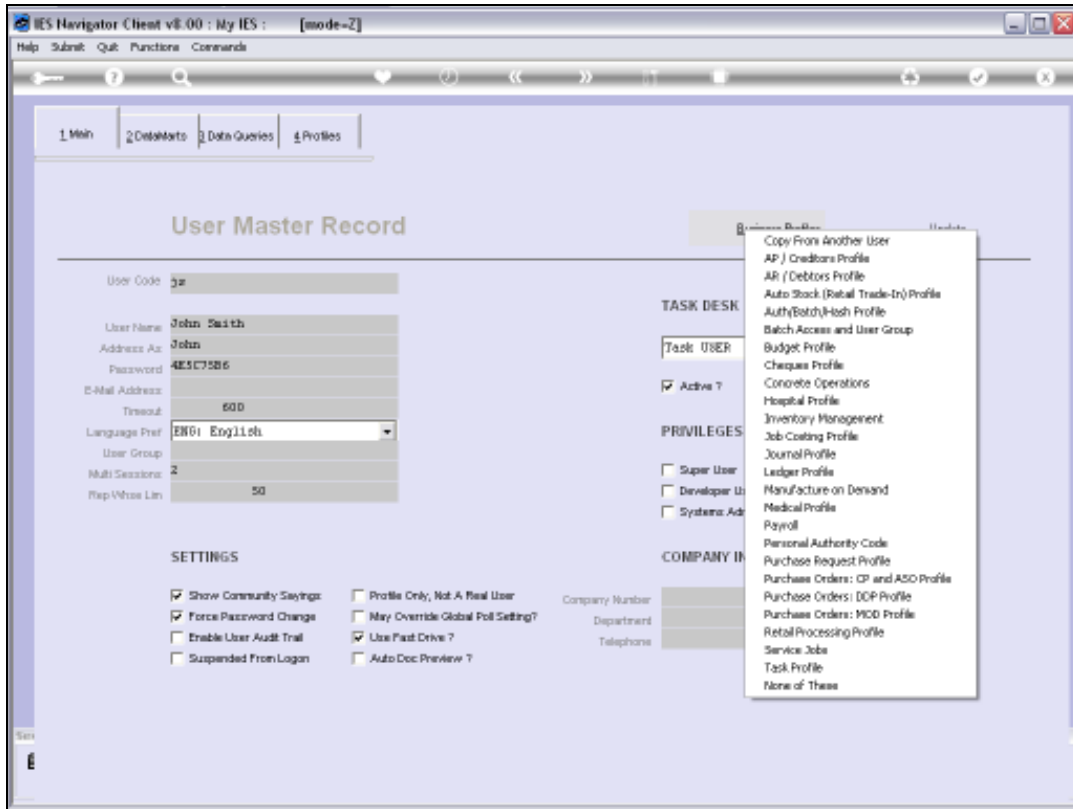
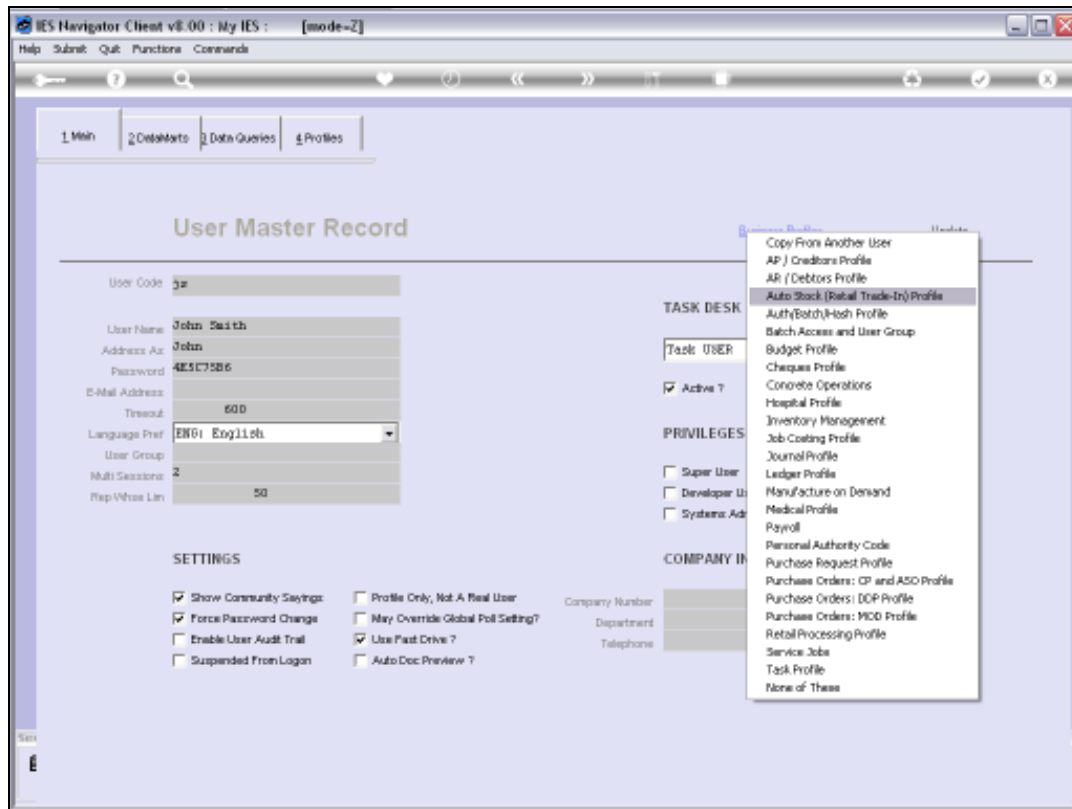


Slide 1

We are busy looking at Business Profiles and in this session we are looking at the Automatic Stock Creation Profile.

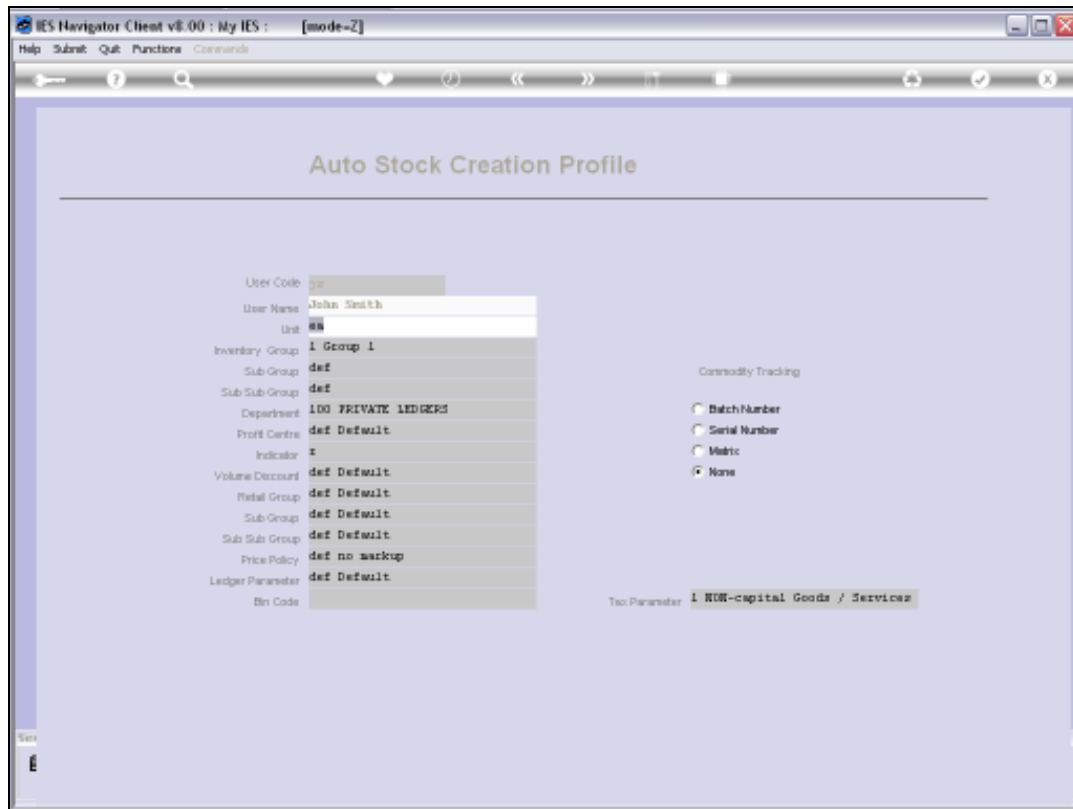


Slide 2



Slide 3

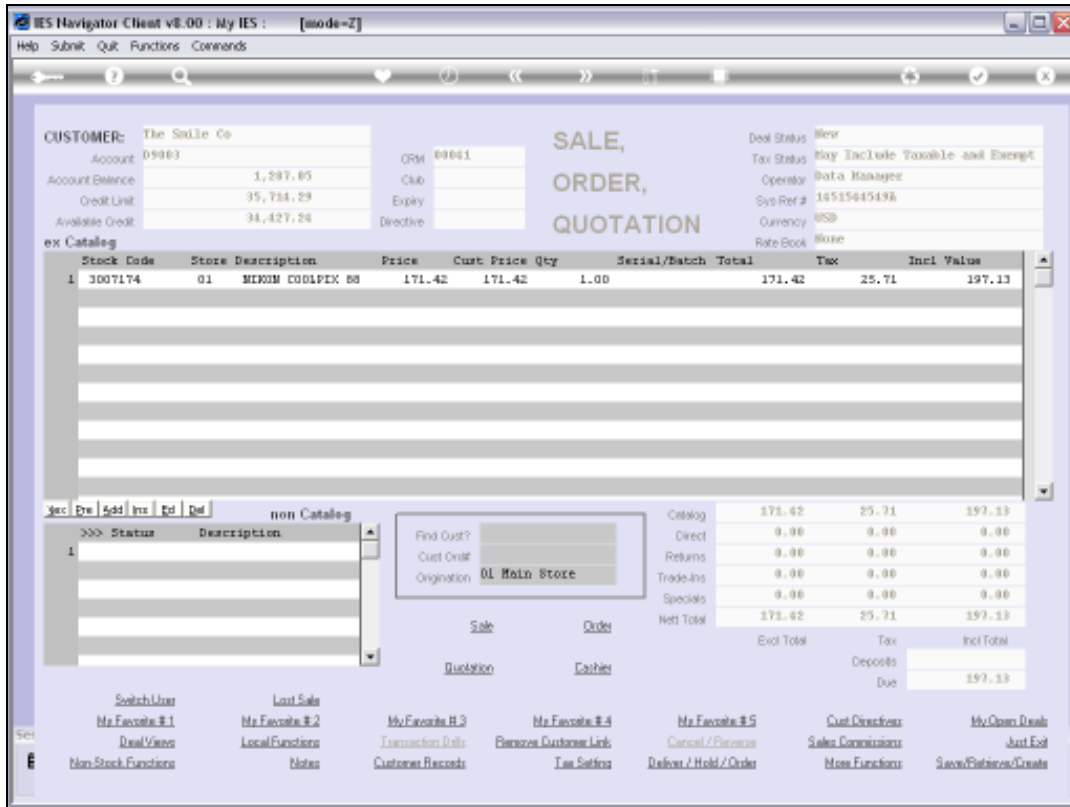
As for all the Business Profiles, we can Access this Profile from the User's Master Record.
 We choose Business Profiles.
 And the Auto Stock (Retail Trade-In) Profile.



Slide 4

So this Business Profile is a little bit different to the other Business Profiles in the sense that it does not really grant any Privileges.

But what it does, is it provides a template for the automatic creation of a New Stock Item.



Slide 5

So this Profile, that is really a template for the creation of a Stock Item, is used for Trade-Ins and we only use this Profile if in fact we allow or process Trade Ins in our Invoicing or Retail System.

So we are looking at an example here.

We are doing an Invoice for The Smile Co and we are selling them a new Nikon camera. But this customer is trading in an old camera.

So what we want to do is to put it straight away in Stock, so that we can sell it again as a Used Item.

Now to avoid the Operator from going through all the procedures of creating a New Stock Item, this template acts as the basis of the automatic creation of the New Stock Item.

IES Navigator Client v8.00 : My IES : [mode=Z]

Help Submit Quit Functions Commands

CUSTOMER: The Sells Co

Account: D9963

Account Balance: 1,287.85

Credit Limit: 35,734.29

Available Credit: 34,427.24

CRM: 00041

Club:

Expiry:

Directive:

**SALE,
ORDER,
QUOTATION**

Deal Status: New

Tax Status: Buy Include Taxable and Exempt

Operator: Pata Manager

Sys Ref #: 14515415198

Currency: USD

Rate Book: None

Stock Code	Store Description	Price	Cust Price	Qty	Serial/Batch	Total	Tax	Incl Value
1 3007174	01 MEMOR COOLPEX 88	171.42	171.42	1.00		171.42	25.71	197.13

non Catalog

>>> Status	Description
1	

Direct Item ADD
Return Item ADD
Trade-In Item ADD
None of These

Find Cust?

Cust Origin:

Sale Order

Quotation Cashier

Catalog	Tax	Incl Total
Catalog	171.42	197.13
Direct	0.00	0.00
Returns	0.00	0.00
Trade-ins	0.00	0.00
Specials	0.00	0.00
Net Total	171.42	197.13

Yes No Add Inv Del Del

Switch User

My Favorite #1

Deal Views

Non-Stock Functions

Last Sale

My Favorite #2

Local Functions

Notes

My Favorite #3

Transaction Lists

Customer Records

My Favorite #4

Remove Customer Links

Tax Settings

My Favorite #5

Cancel / Reverse

Rebook / Hold / Order

Cust. Discounts

Sales Commissions

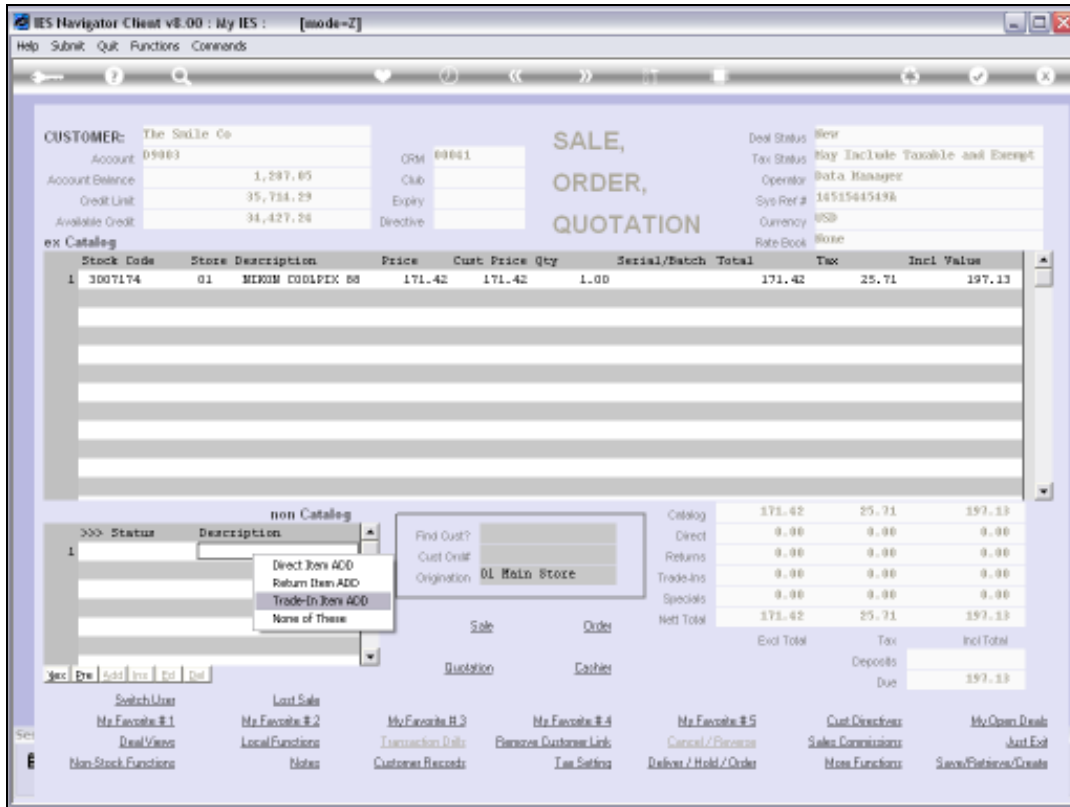
More Functions

My Open Deals

Just Exit

Save/Restore/Close

Slide 6



Slide 7

So I use my Non-Stock Functions, and I choose "ADD Trade-In Item".

Slide 8

So now the System loads from my Profile, all the Default Fields for the creation of the New Stock Item.

And what I am going to do, is just put the New Item Description here: Used Minolta.

And then the Trade-In Price.

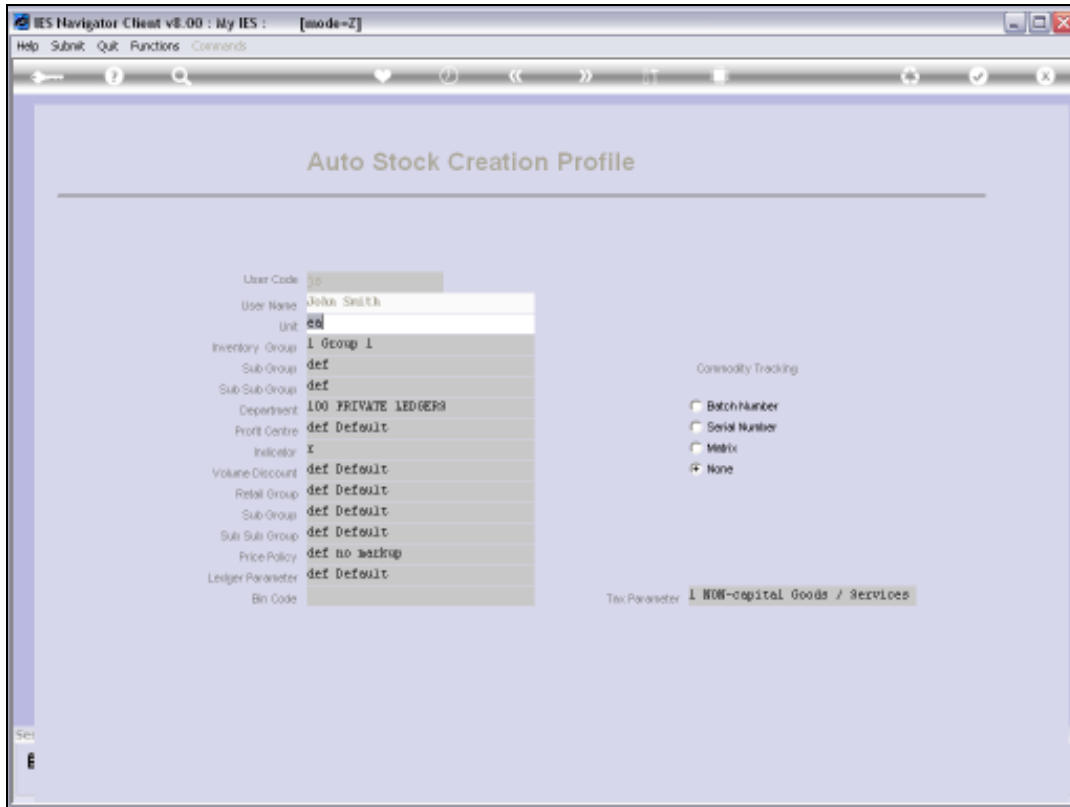
If there is a Serial Number, I will do that also.

And then I choose Accept.

Then the System automatically creates the New Stock Item for the used camera that we have accepted as a Trade-In, so that we can sell it again.

Now any of these Fields that are loaded automatically, I may be able to change. But the point is, if this Template already has the Default settings for the creation of the Stock Item, I may not have to change anything.

I can simply fill in the information and choose Accept.



Slide 9

So what we are defining here, when we are looking at this Business Profile, are the Defaults for the Fields that I used to create the New Stock Item automatically and that is what this Profile is about.