

Slide 1

In this series of Tutorials, we are going to look at User Access Profiles.

Every User that Uses the System, has a unique Logon Code or User Code, and attached to this Code, is also the Menu and Business Access Profiles that determine where a User can go in the System and what the User can do.



Slide 2

We have a specific Business Module called User Access and Profile Management.

This Module is available in every Data Mart and includes all the functions we need for the User Access and Profile Administration.

## Access Profiles

- Access Profiles determine the User's privileges while working with the system

What are Access Profiles for?

Access Profiles determine the User's Privileges while working with the System.

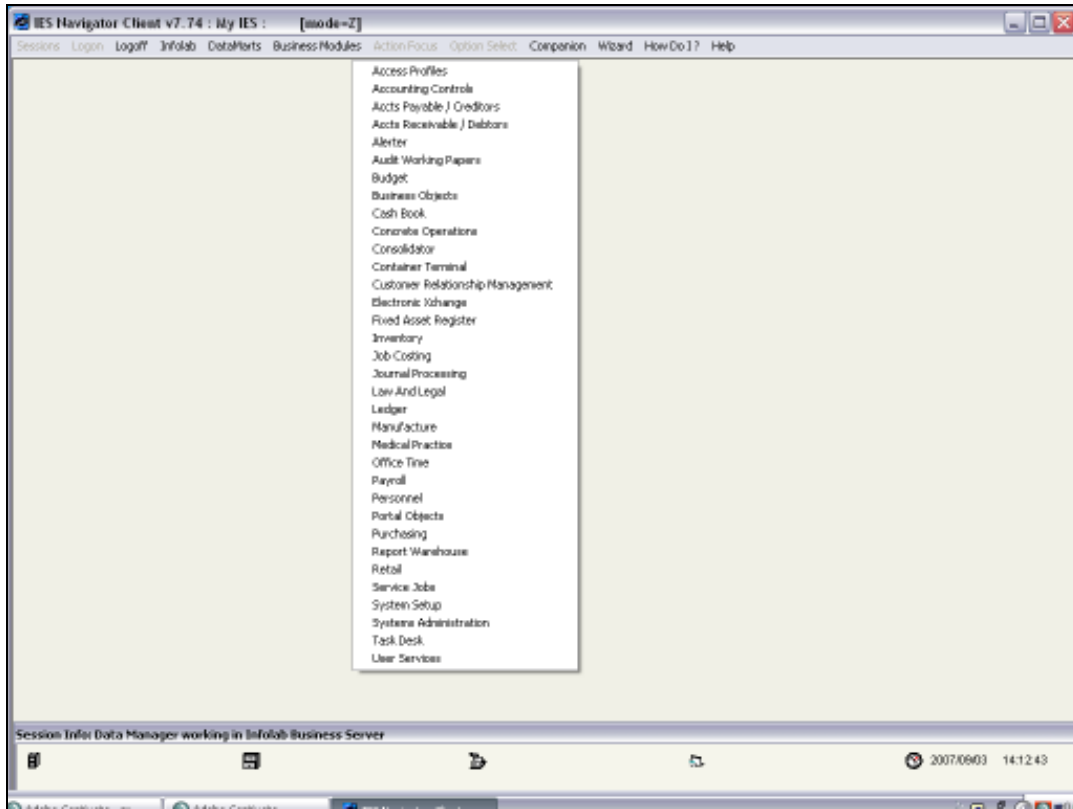
## Access Profiles include 2 layers

- The Menu layer determines where the User may navigate to, i.e. options to Open or Perform
- The Business layer oversees the functions the User may perform while using an option opened from the Menu layer

There are two layers to the Access Profiles.

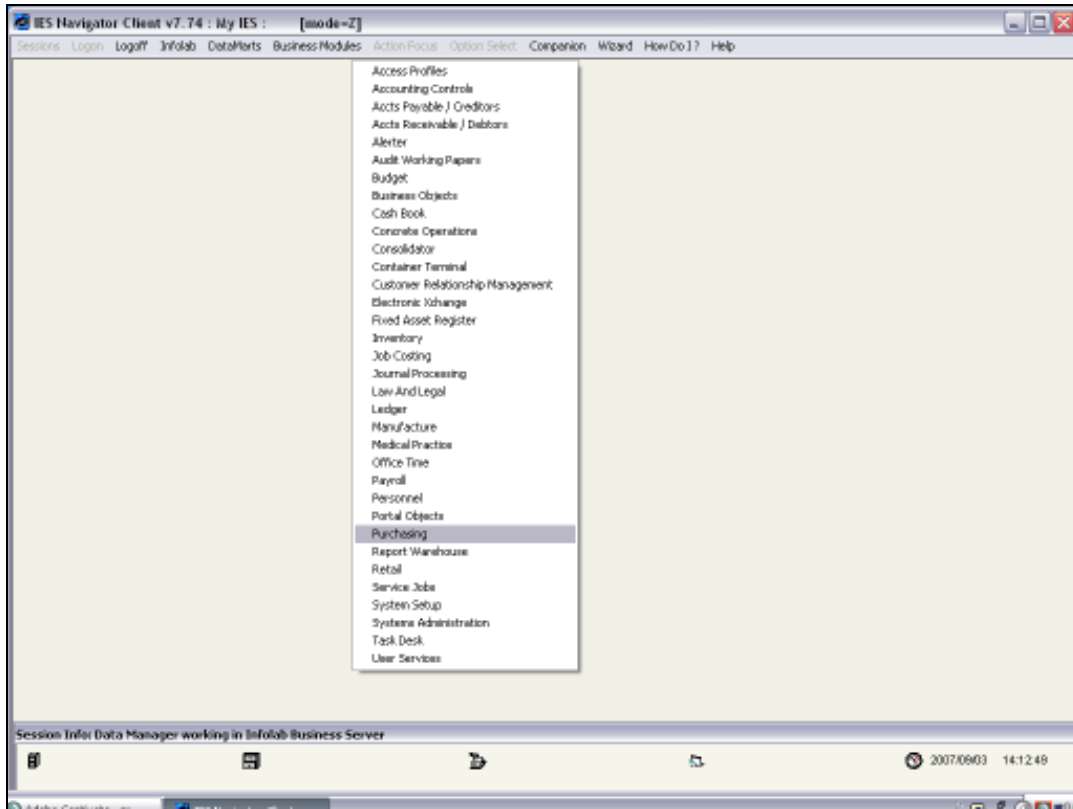
1) The Menu layer which determines where the User may navigate to, i.e. which Options to Open or Perform.

2) The Business Layer, which oversees the functions the User may perform while using an Option, opened from the Menu layer.

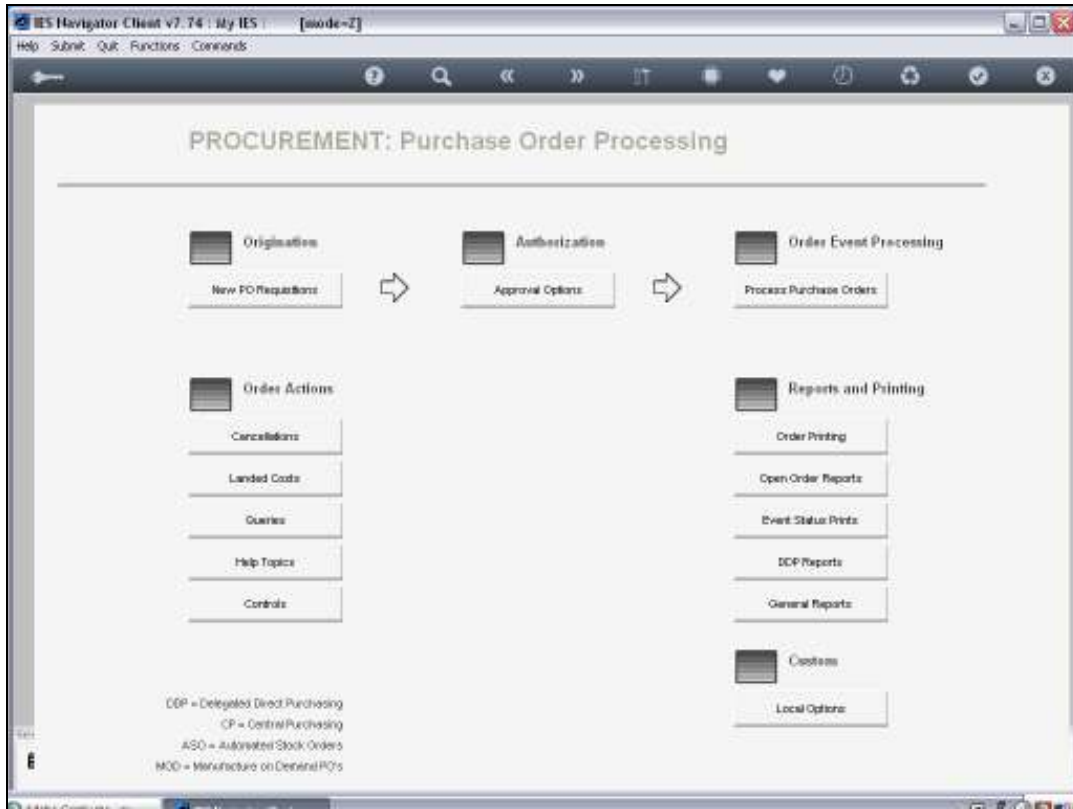


Slide 5

For example, when I use the Menu Layer, to choose Purchasing

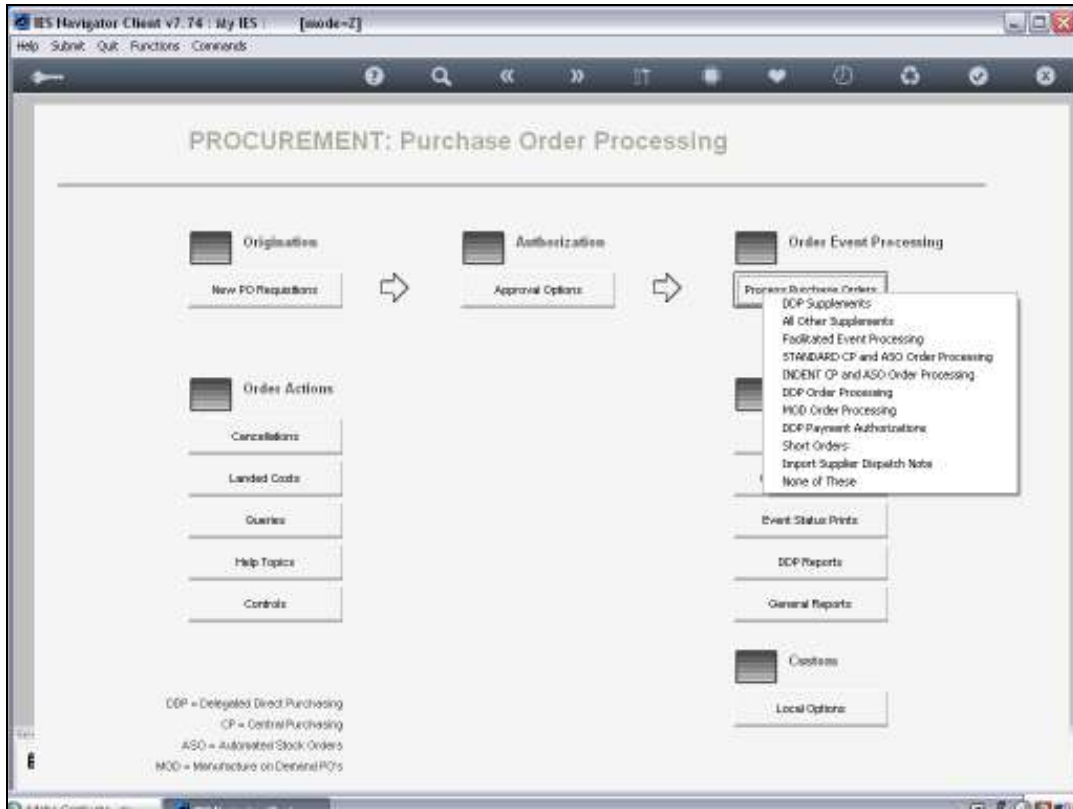


Slide 6



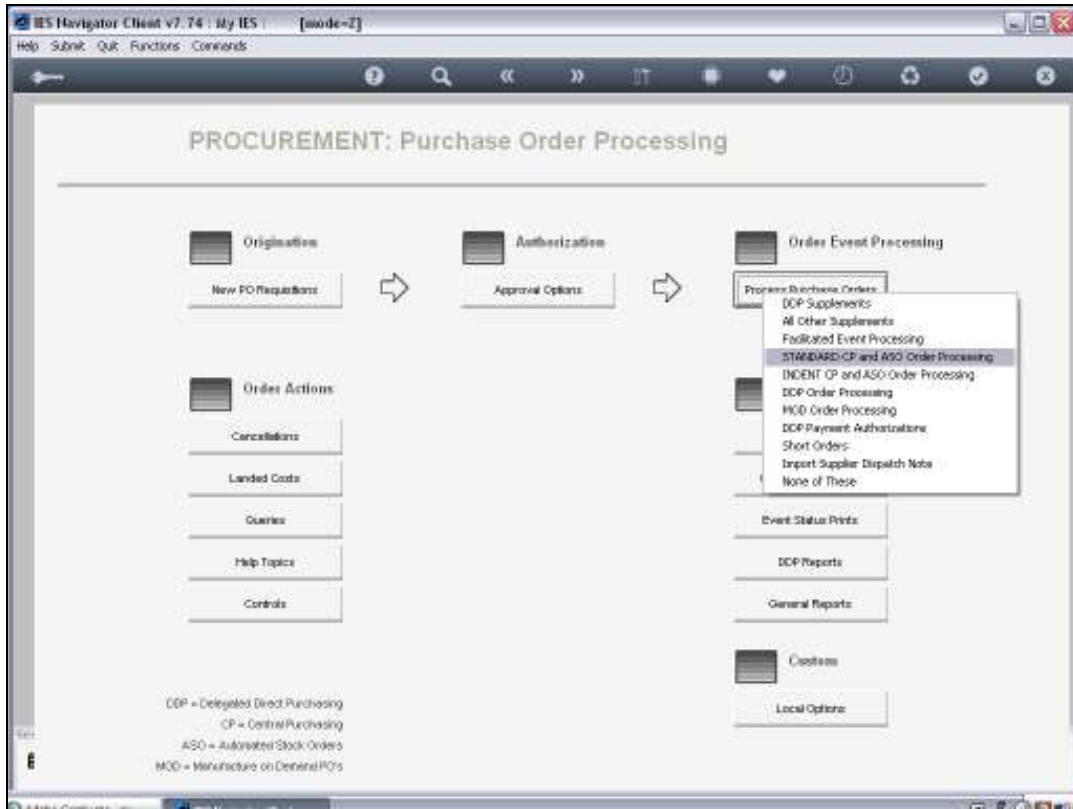
Slide 7

And from there, I navigate to Processing of Purchase Orders.

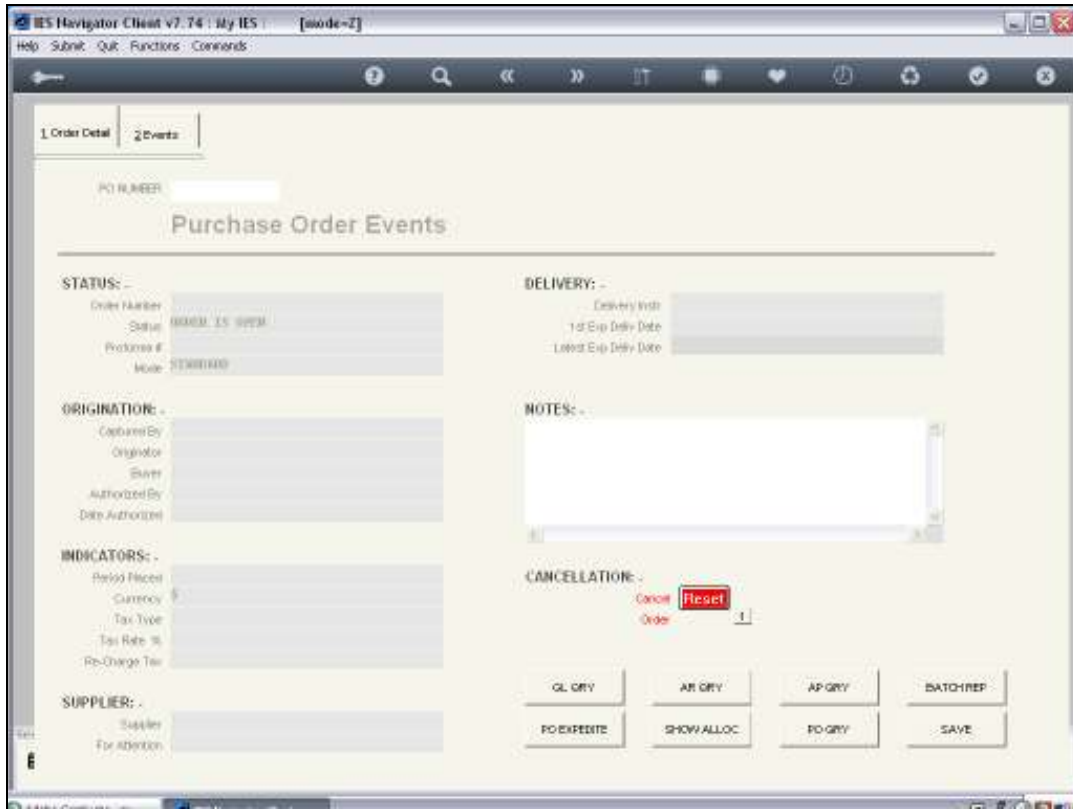


Slide 8

Then I choose an Option for Standard Orders.



Slide 9



Slide 10

Now I have opened this Function or Process from the Menu Layer.  
But once I am using this particular Process, there may be additional rules.

IES Navigator Client v7.74 : My IES : [mode=Z]

Help Submit Quit Functions Comments

1 Order Detail 2 Events

PO NUMBER: 46

### Purchase Order Events

**STATUS:**

Order Number: [input]  
Status: 00000 - IS - 0000  
Protocol # [input]  
Mode: STANDARD

**DELIVERY:**

Delivery Info: [input]  
1st Exp. Deliv. Date: [input]  
Latest Exp. Deliv. Date: [input]

**ORIGINATION:**

Created By: [input]  
Originator: [input]  
Saver: [input]  
Authorized By: [input]  
Date Authorized: [input]

**INDICATORS:**

Revised Prices: [input]  
Currency: \$ [input]  
Tax Type: [input]  
Tax Rate: % [input]  
Re-Charge Tax: [input]

**SUPPLIER:**

Supplier: [input]  
For Attention: [input]

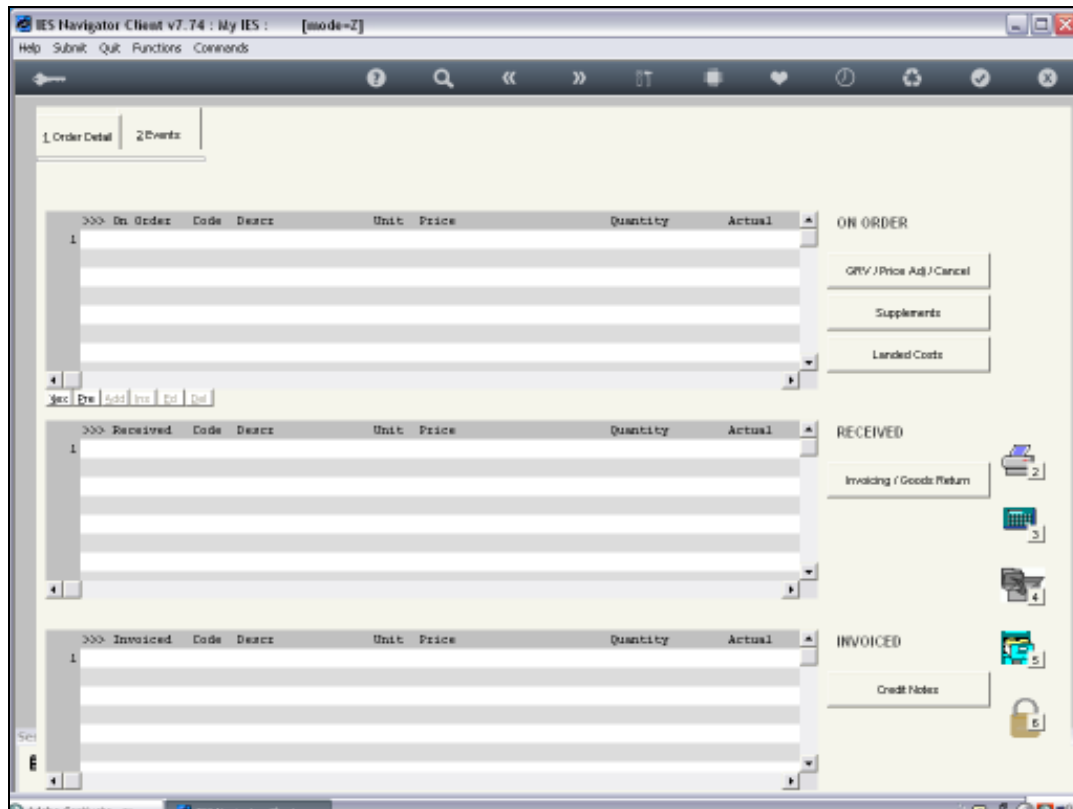
**NOTES:**

[Text Area]

**CANCELLATION:**

Cancel Order:  1

Slide 11



Slide 12

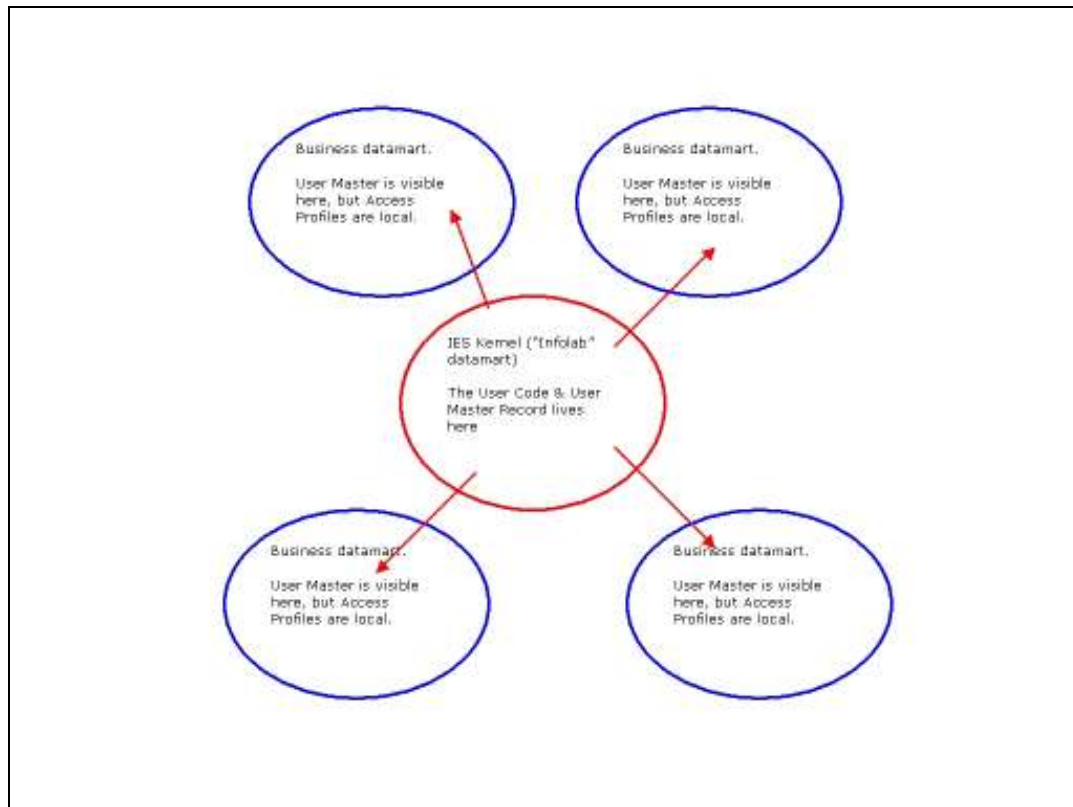
And these are the Business Rules overseen by the Business Profile Layer that guide or govern as to what I may be able to perform in this particular Process.

In other words, in the case of the Purchase Order, which is the current example, it is possible to Receive Goods, to Return Goods, to Process Invoicing, Process Credit Notes, etc.

But my Business Profile may determine that, even though I can use this Option from the Menu layer, I cannot Receive Goods, or I cannot Return Goods, but I may be able, for example to perform Invoicing of Goods.

So from the Menu layer we can open certain Options, we can navigate to, and Open Options.

But the Business layer determines the rules, when I want to use an Option, opened from the Menu Layer.



Slide 13

So it is important to understand that each and every User, that uses the System, will have a Unique User Code.

No two Users will have the same Code to Log onto the System.

Now this User Code is part of the User Master Record, and we can say that the User Master Record, which lives in Kernel, i.e. the Infolab Data Mart, is visible to all Data Marts.

In other words, my User Code, my name and certain of my preferences and settings, attached to my Master Record, as a User, is visible throughout the System.

But it is important to understand that in each and every Data Mart, we have Local Access Profiles. So what I may be able to do in one Business Data Mart is not necessarily what I may be able to do in another Business Data Mart.

So in every Data Mart, we have the User Profiles, with the 2 layers. The Menu profiles and the Business Profiles for a User, in that particular Data Mart.



Slide 14

So this is an introduction to User Access and Profile Management.

In the other Tutorials in the series, we will discuss each element of this subject in more detail.