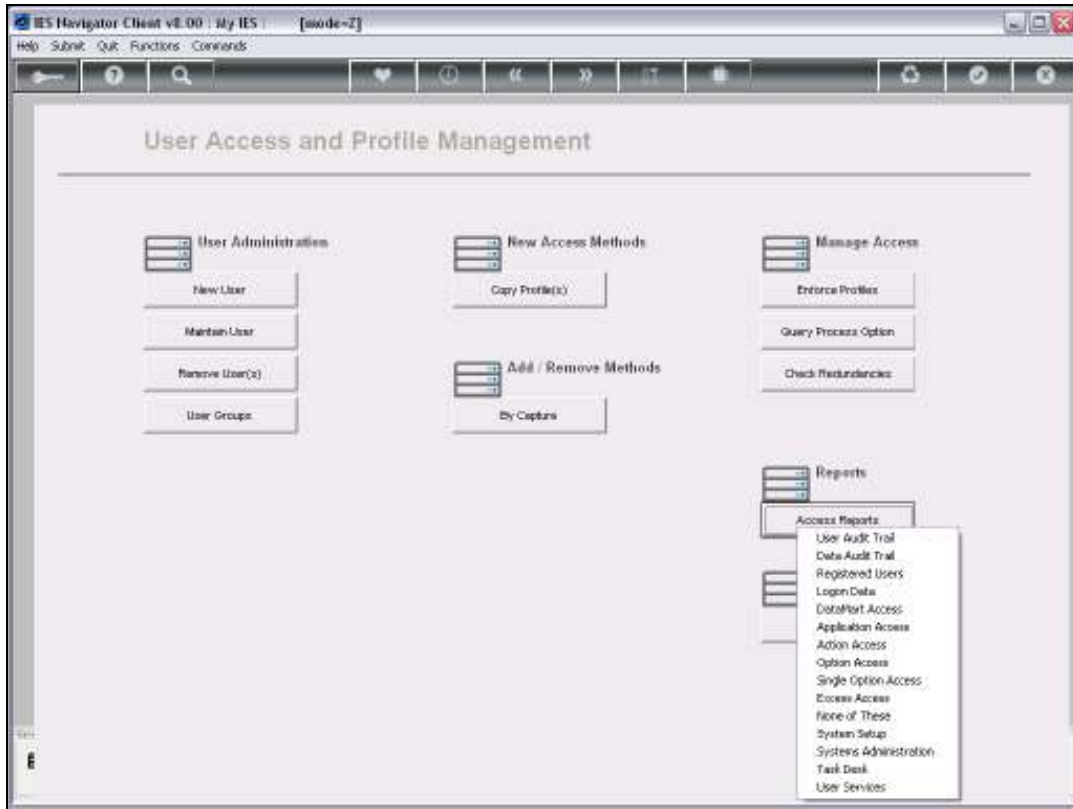


Slide 1

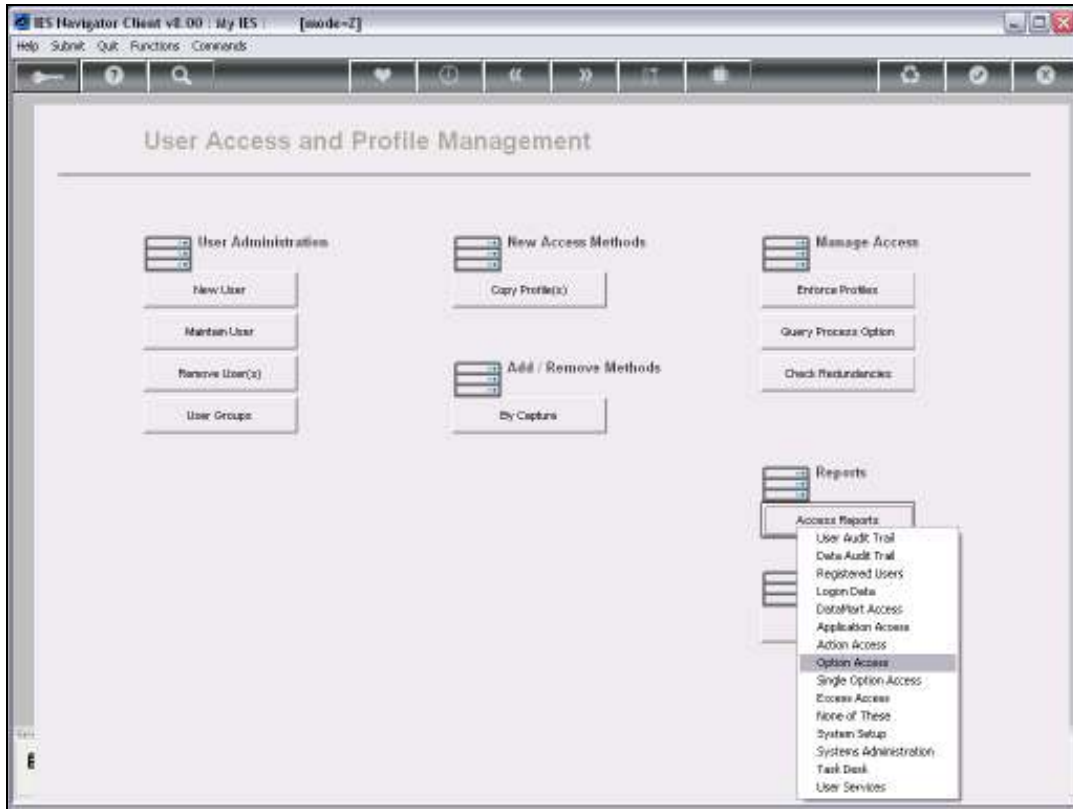
We are busy with User Profile Administration, and we are looking at Access Reports.

In this session we are looking at the Option Access Report. This is by far the most widely used of all the Access Reports, because it reveals for selected Users, or single User, in the current Data Mart, all the Access that this User has. Option, Action and Application.

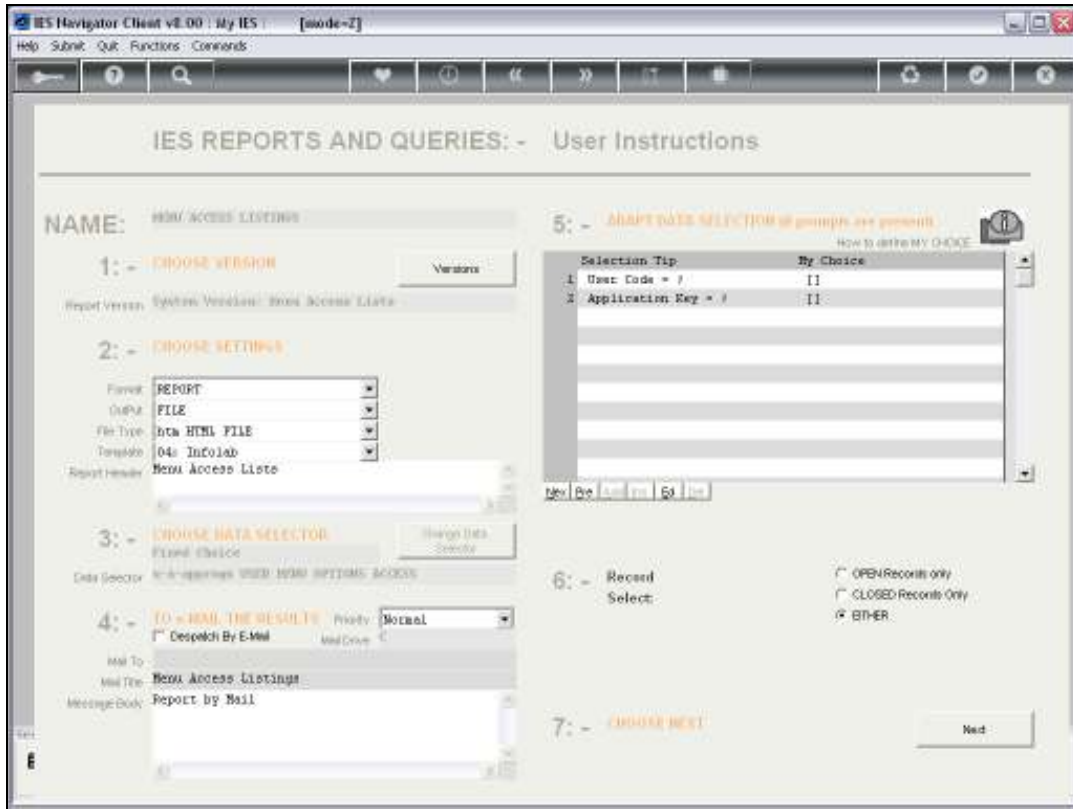
In other words, the paths that lead to the Options and all the Options that the User has Access to.



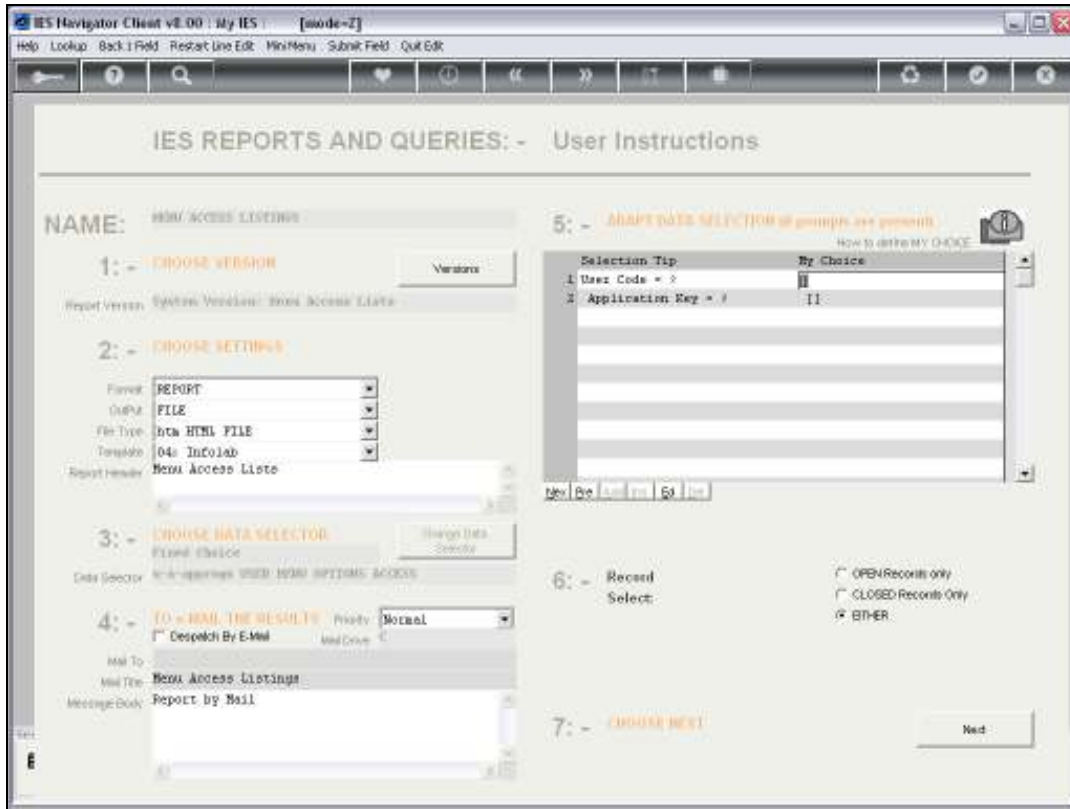
Slide 2



Slide 3



Slide 4



Slide 5

IES Navigator Client v8.00 : My IES : [mode=Z]

Help Lookup Back Field Restart Line Edit MiniMenu Subnk Field Quit Edit

IES REPORTS AND QUERIES: - User Instructions

NAME: MENU ACCESS LISTINGS

1: - CHOOSE VERSION

Report Version: System Versions: Menu Access Lists

2: - CHOOSE SETTINGS

Format: REPORT

Output: FILE

File Type: Data HTML FILE

Template: 04: Infolab

Report Header: Menu Access Lists

3: - CHOOSE DATA SELECTOR

Filter: All

Data Selector: All Applications USED MENU OPTIONS ACCESS

4: - TO WHAT RESULTS Priority: Normal

Dispatch By E-Mail Mail Drive: C:

Mail To: Menu Access Listings

Mail Title: Report by Mail

Message Body:

5: - ADAPT DATA SELECTION *if prompts are present* How to enter MY CHOICE

Selection Tip	By Choice
1 User Code = *	
2 Application Key = *	TI

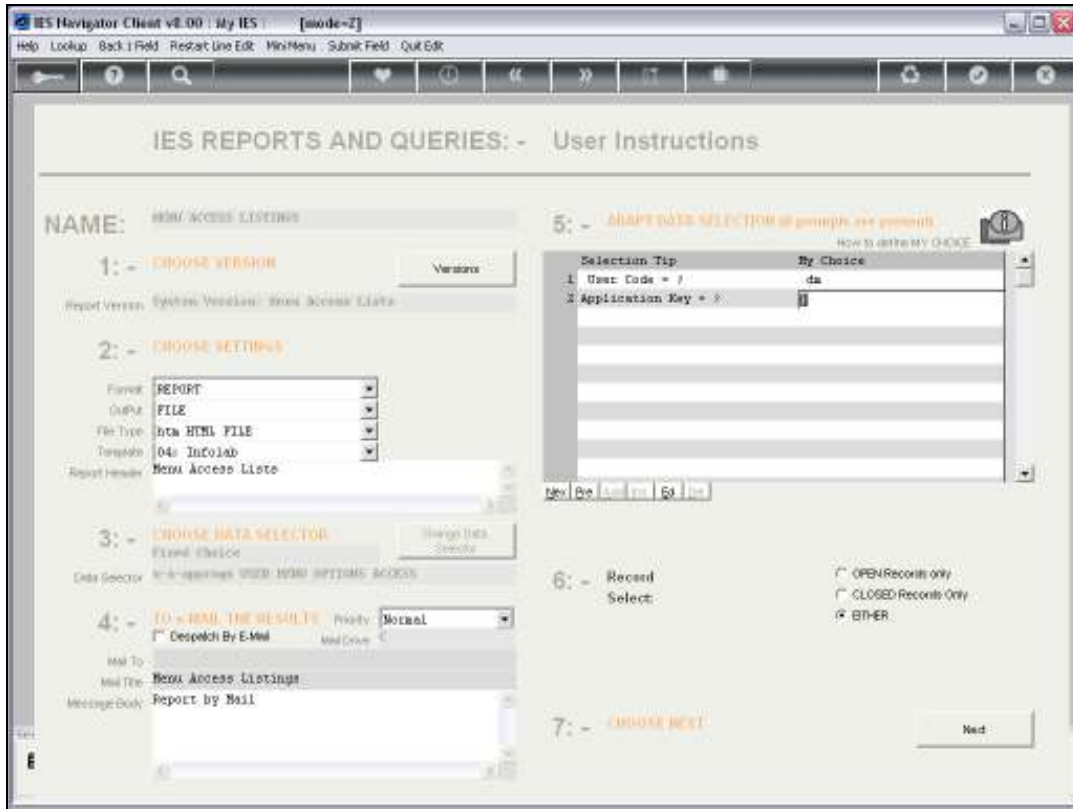
6: - Record Select OPEN Records Only CLOSED Records Only EITHER

7: - CHOOSE NEXT

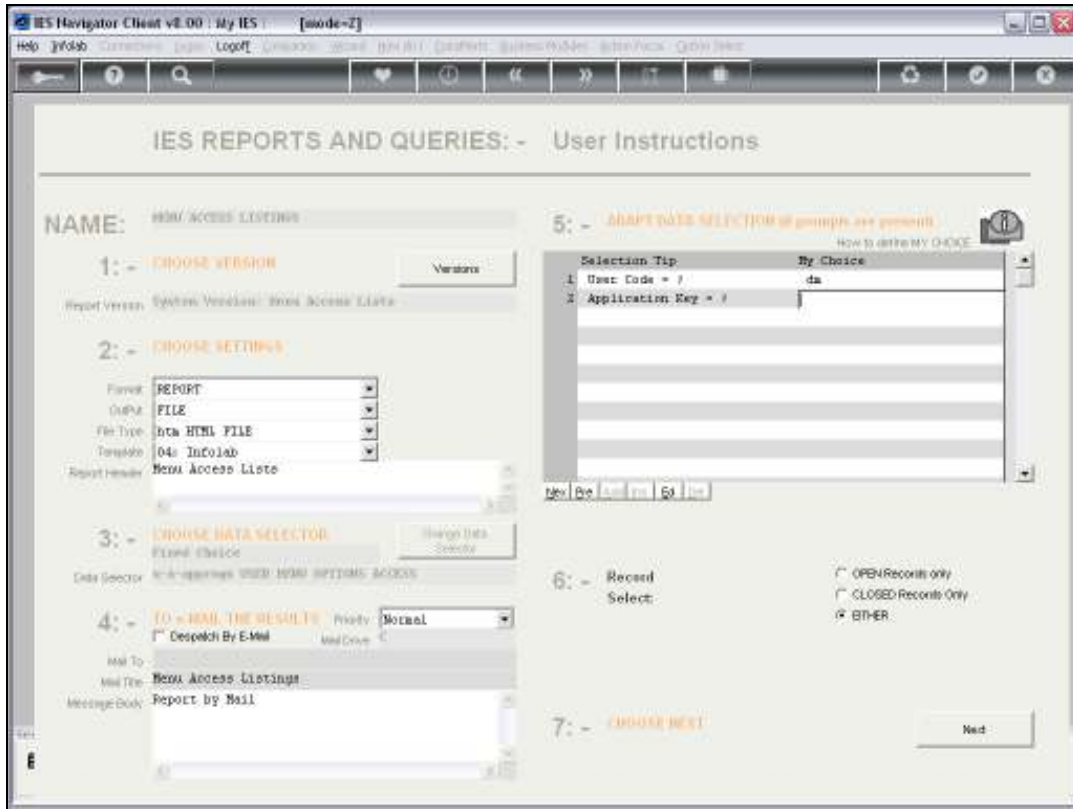
Slide 6

The Report can of course be performed for all Users, for all Applications in this Data Mart, or for a specific User and all Applications, or for any combination of User Code and Application Key.

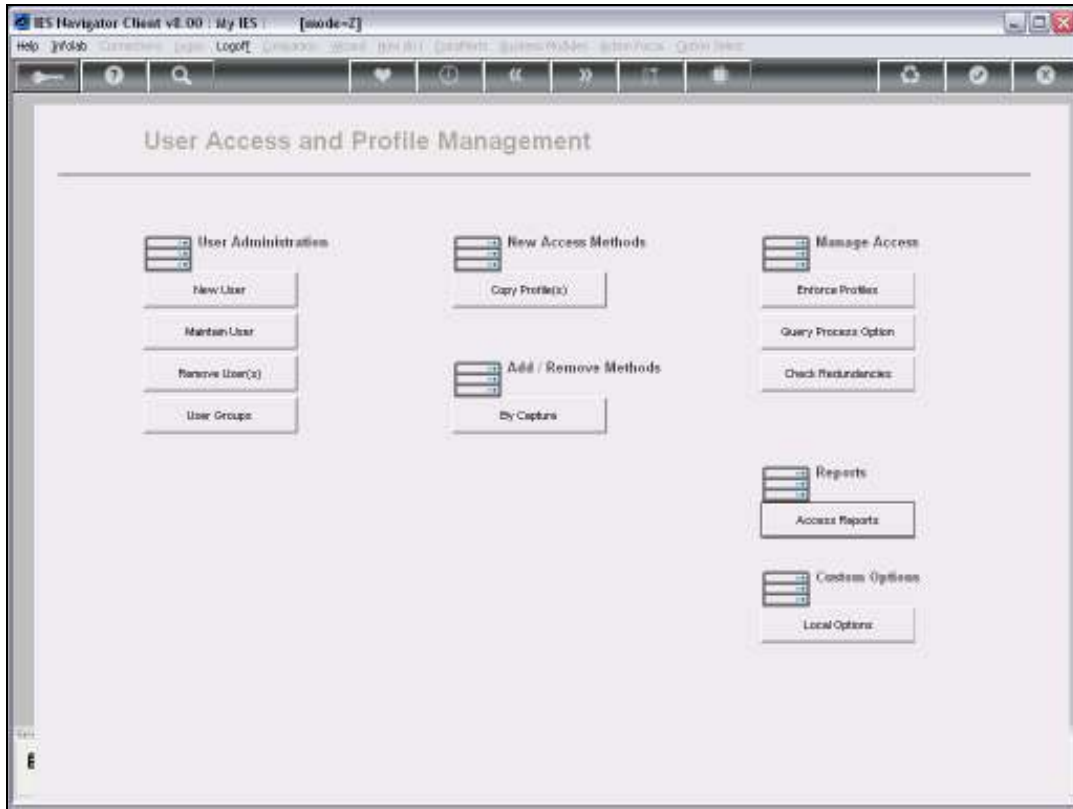
In my example I am going to run all the Application Access, in other words, leave the Wild Cards for the Application, but for a specific User, i.e. "dm" the Data Manager.



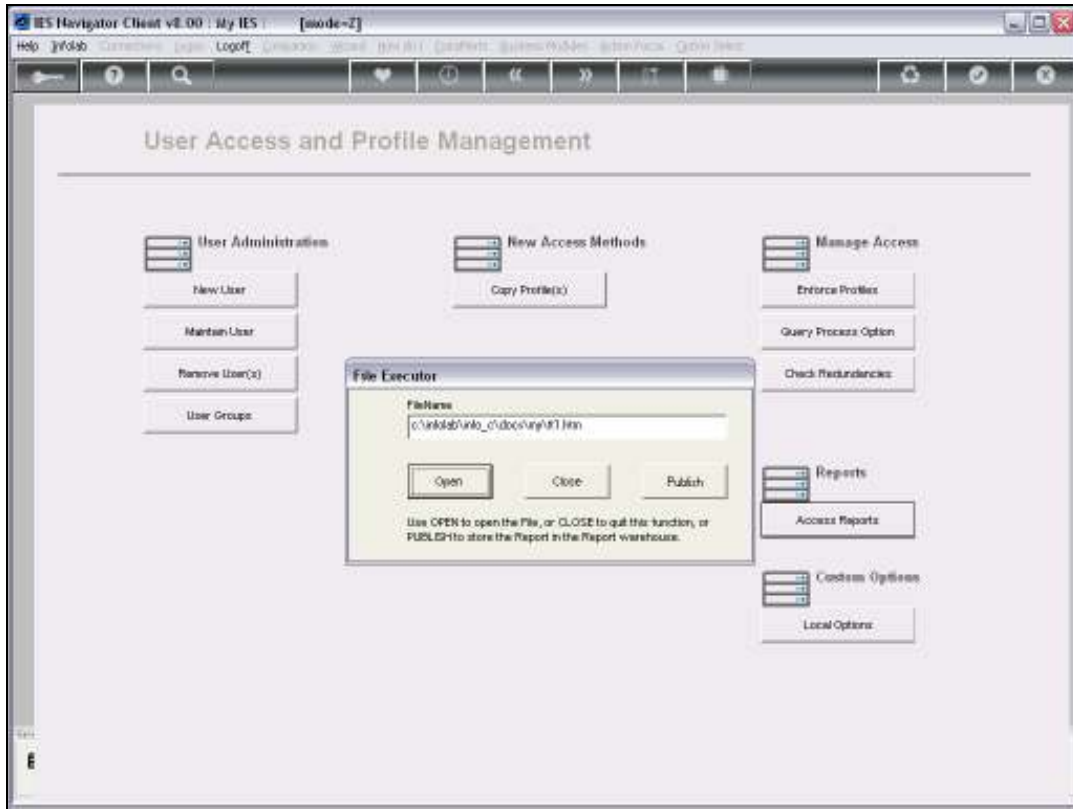
Slide 7



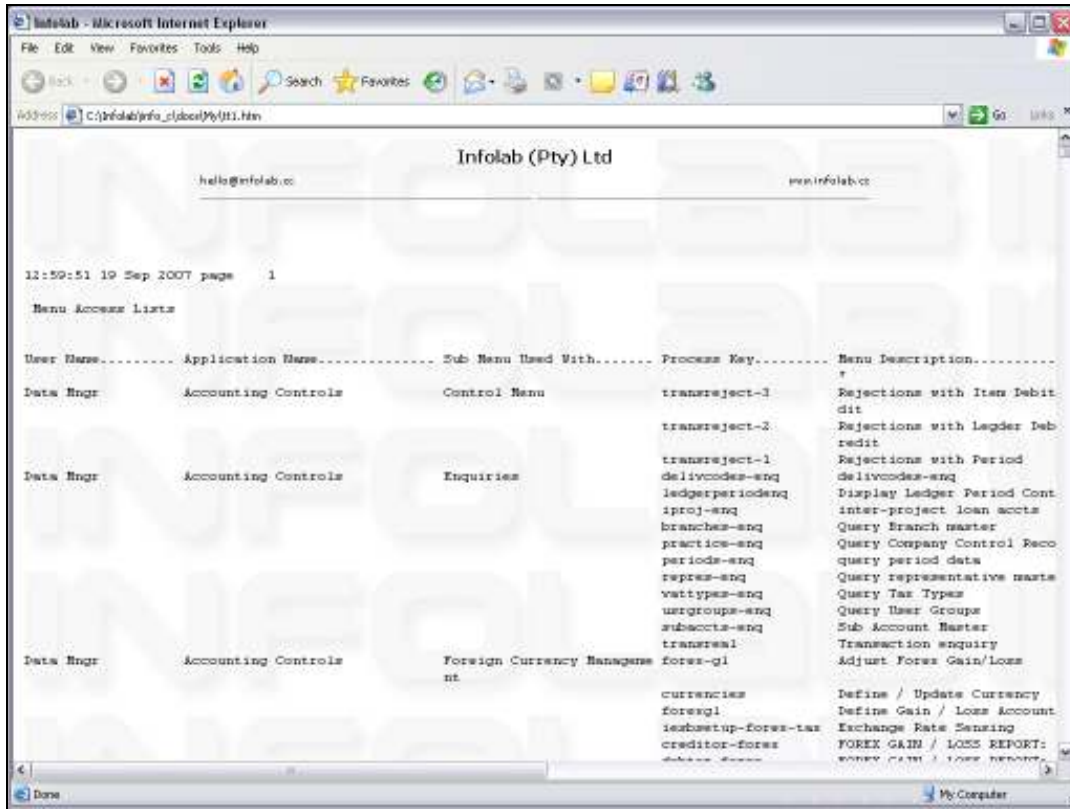
Slide 8



Slide 9

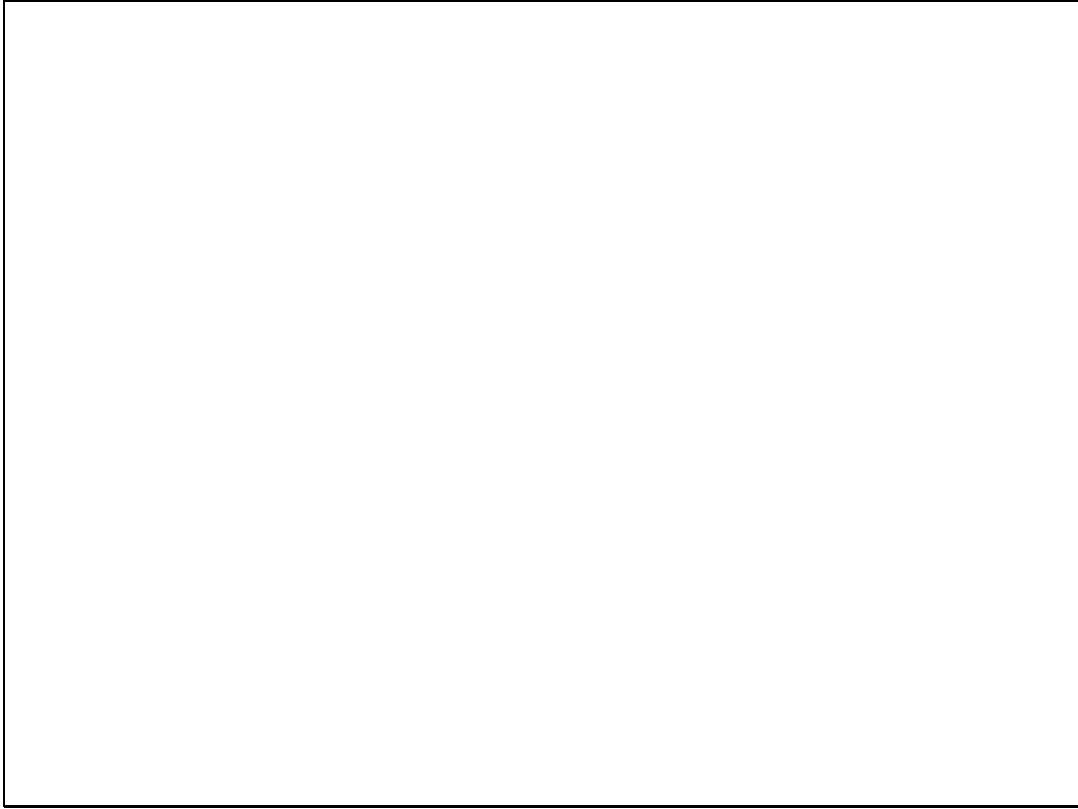


Slide 10

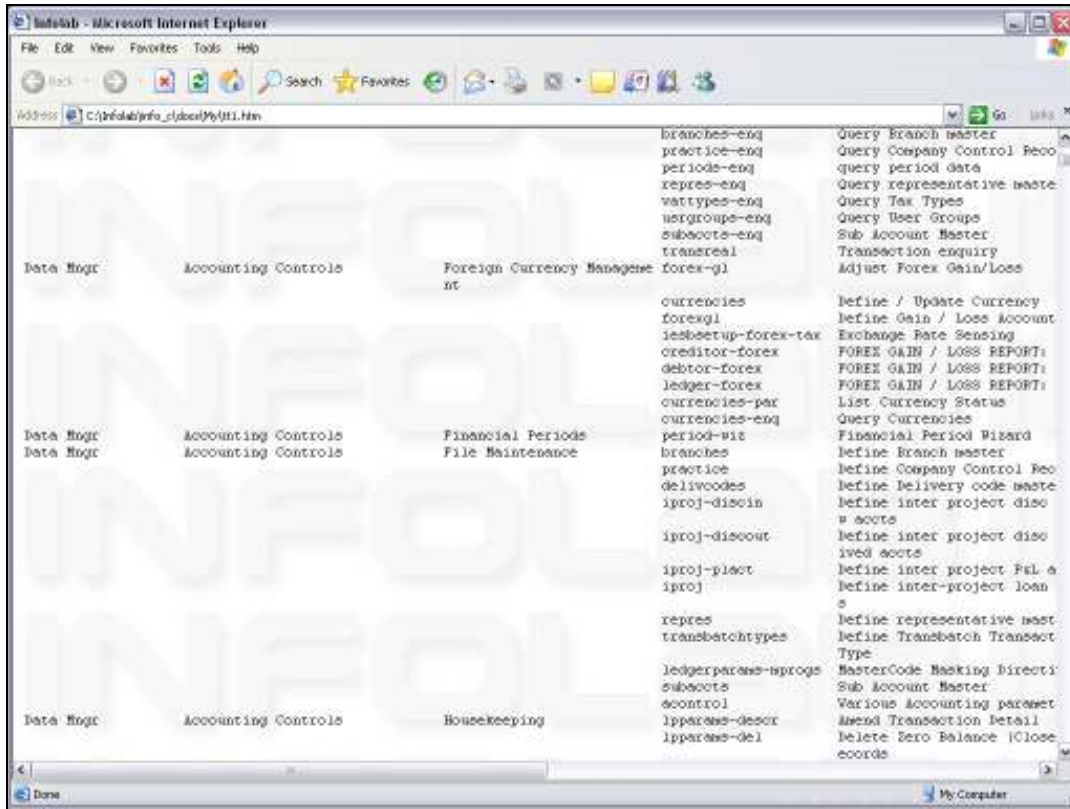


Slide 11

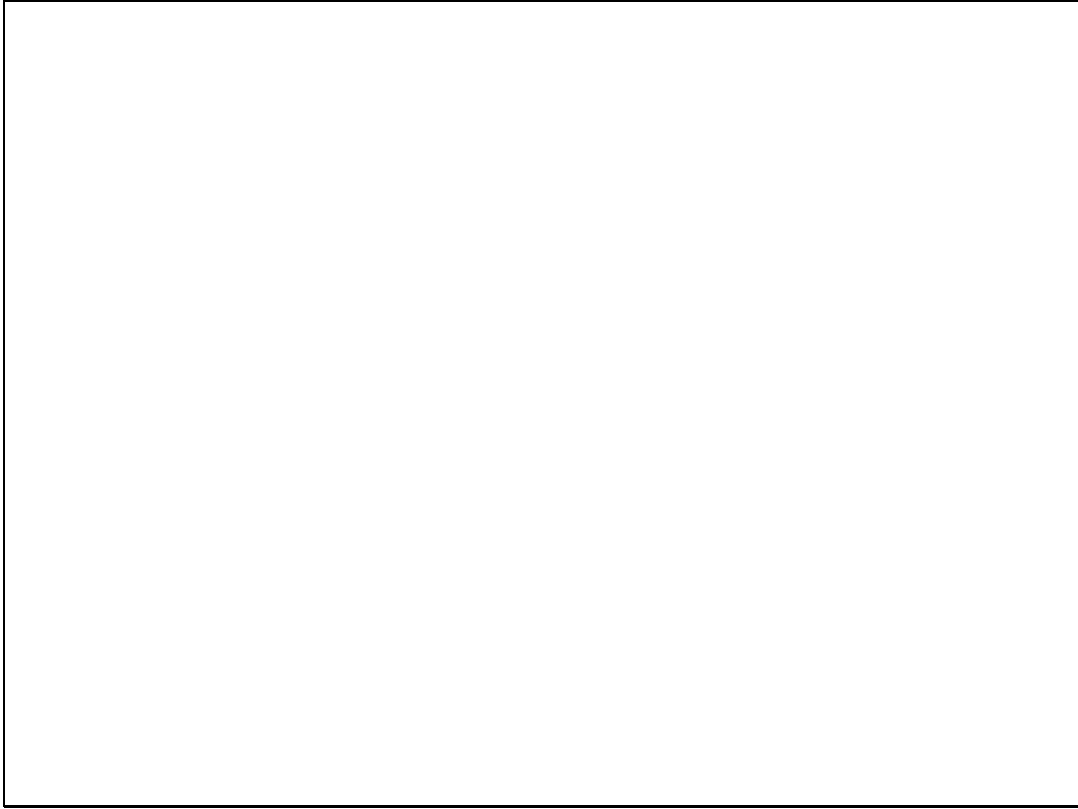
And in this case, the result is only for the Data Manager in this particular Data Mart and the report lists each Application that 'dm' has Access to, with the Sub Menus or Actions and within each of these Actions, in each Application, we list all the Options that this user has Access to.



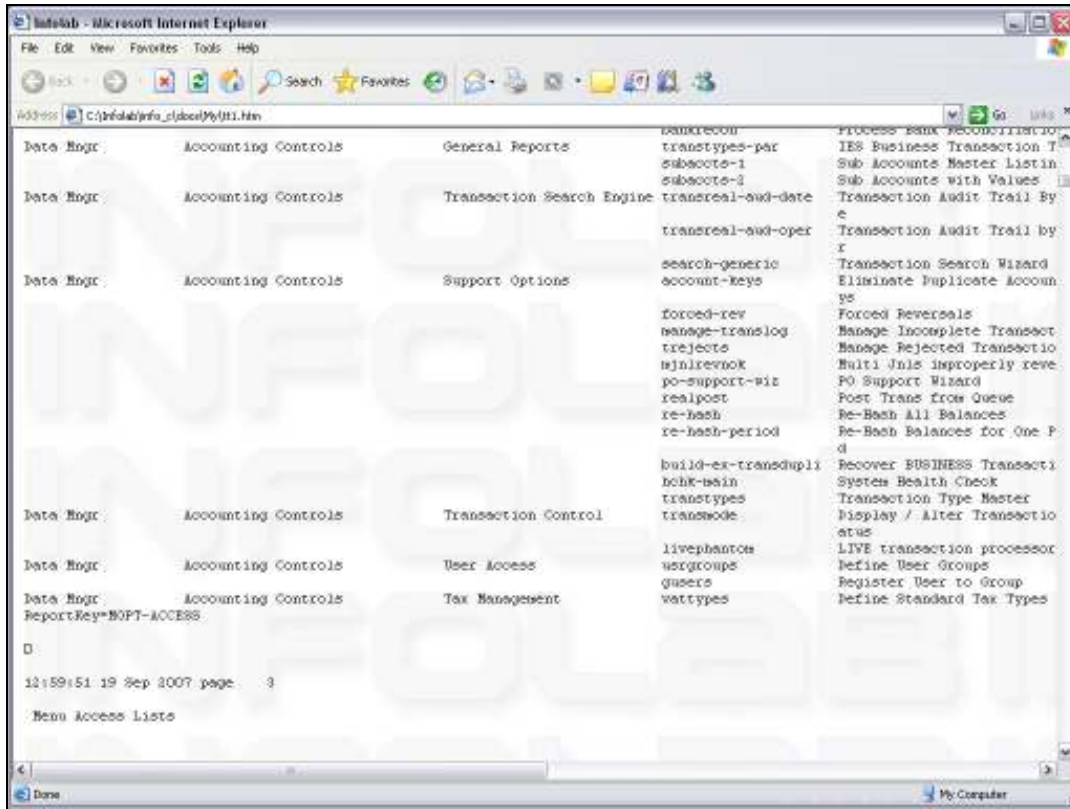
Slide 12



Slide 13



Slide 14



Slide 15

So this is a very useful Report to reveal all the Access for selected Users of a particular User in this Data Mart, for all Applications, or for a specific Application.

And we can also use it constructively while managing Profiles, while building and constructing Profiles, to check what the Access levels is for a particular User, or for a number of Users.