



Slide 1

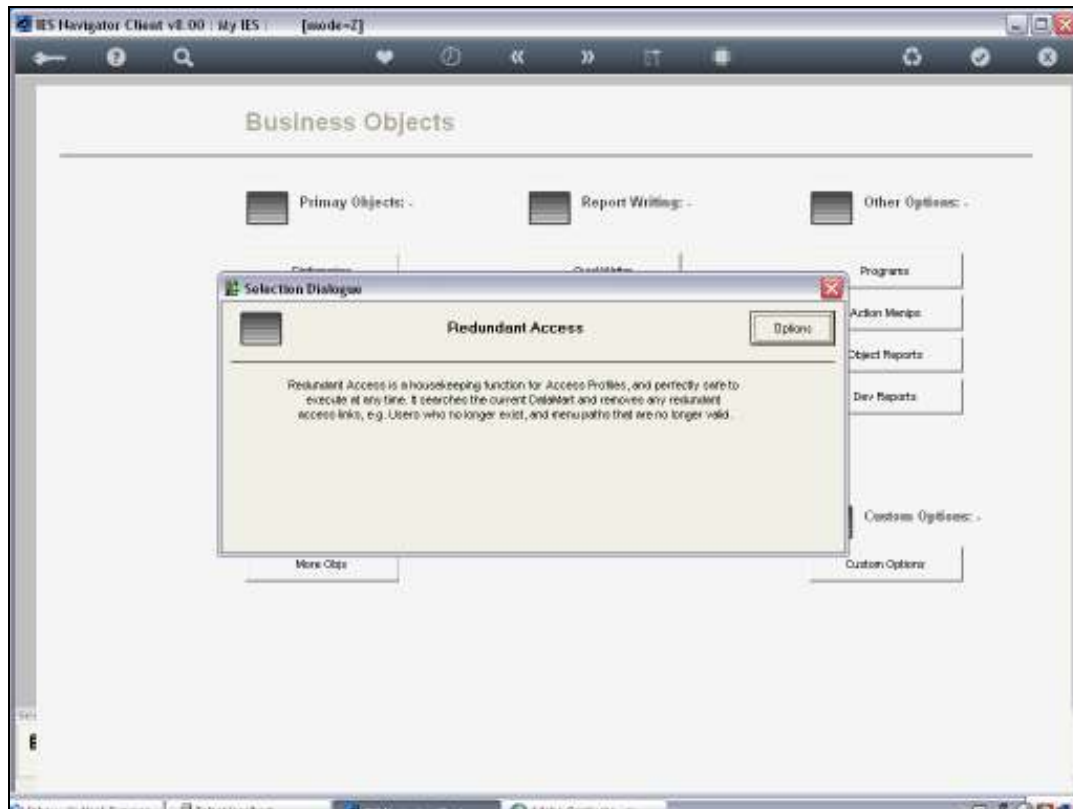
In this session we are looking at Redundant Access.

Of course we are working with User Access.

From the User Access and Profile Management Wizard screen, we choose Check Redundancy.



Slide 2



Slide 3

Then of course it is explained to us what Redundant Access is.

In fact it is a housekeeping function for Access Profiles.

We can use it or apply it at any stage in any Data Mart, because it is perfectly safe to do at any point in time.

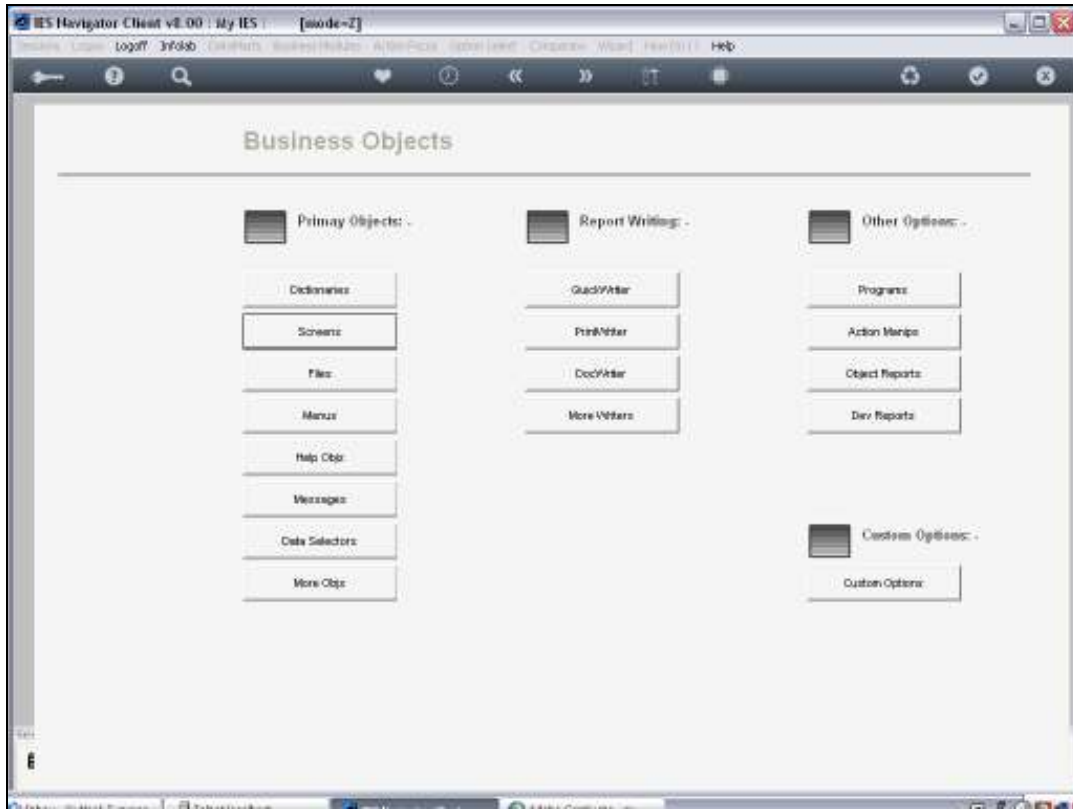
What it does, is it searches the current Data Mart and it will remove any Redundant Access links. These Access links that are redundant, are for Users who no longer exist and for Menu paths that are no longer valid.

In terms of Users who no longer exist, if we remove Users in the proper way, of course there will not be Redundant Access for such Users. But it is possible to remove a User without properly removing their Access in various Data Marts and then that would become Redundant Access. Now this process will actually clear out any such Redundant Access. Menu paths that are no longer valid can come about because of changes that we make to our Menu paths and in fact doing away with some Menu Paths that we used before, but are no longer valid.

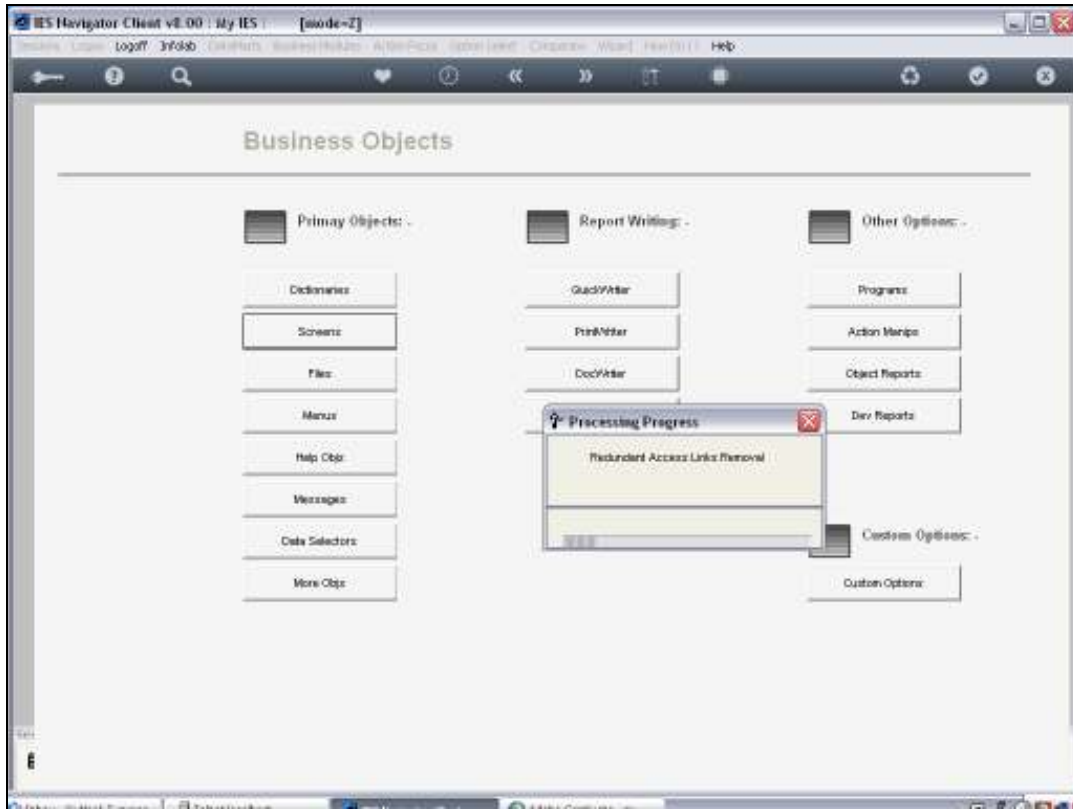


Slide 4

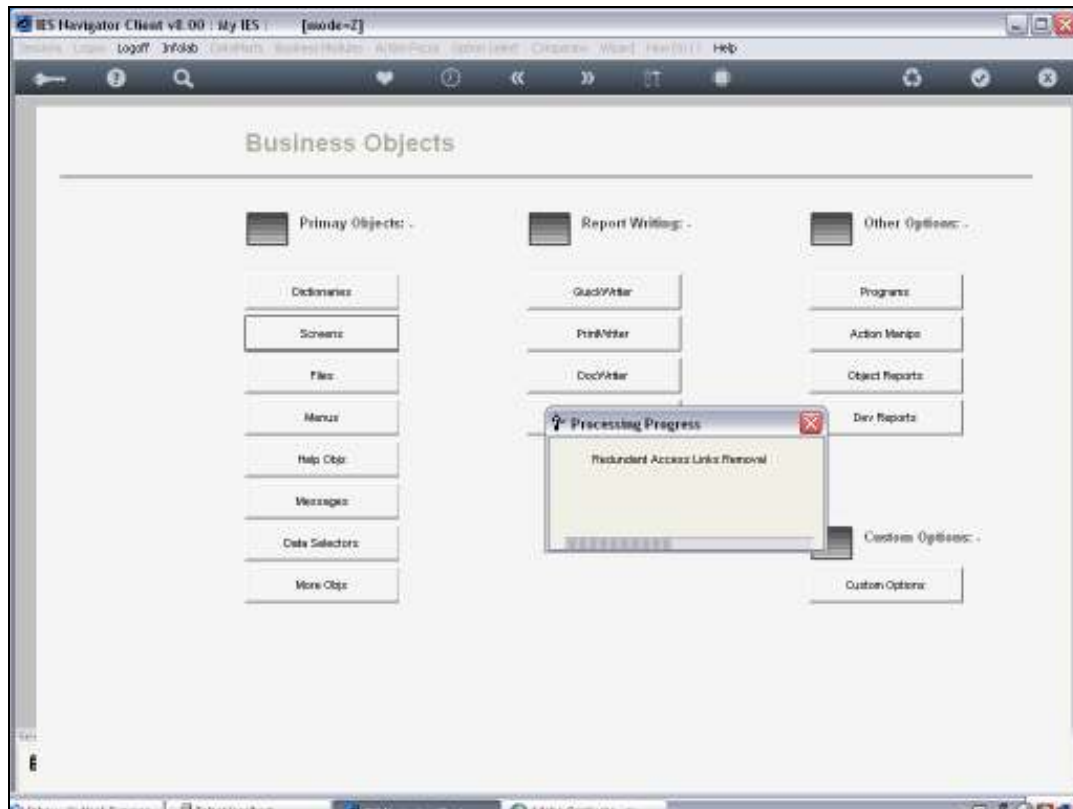
So Redundant Access is very simple and safe to do. It simply tidies the files. We can just choose Next.



Slide 5



Slide 6



Slide 7

And the system will perform the Redundant Access Links Removal and when it is done, it returns to the Main Wizard.

It is as simple as that.