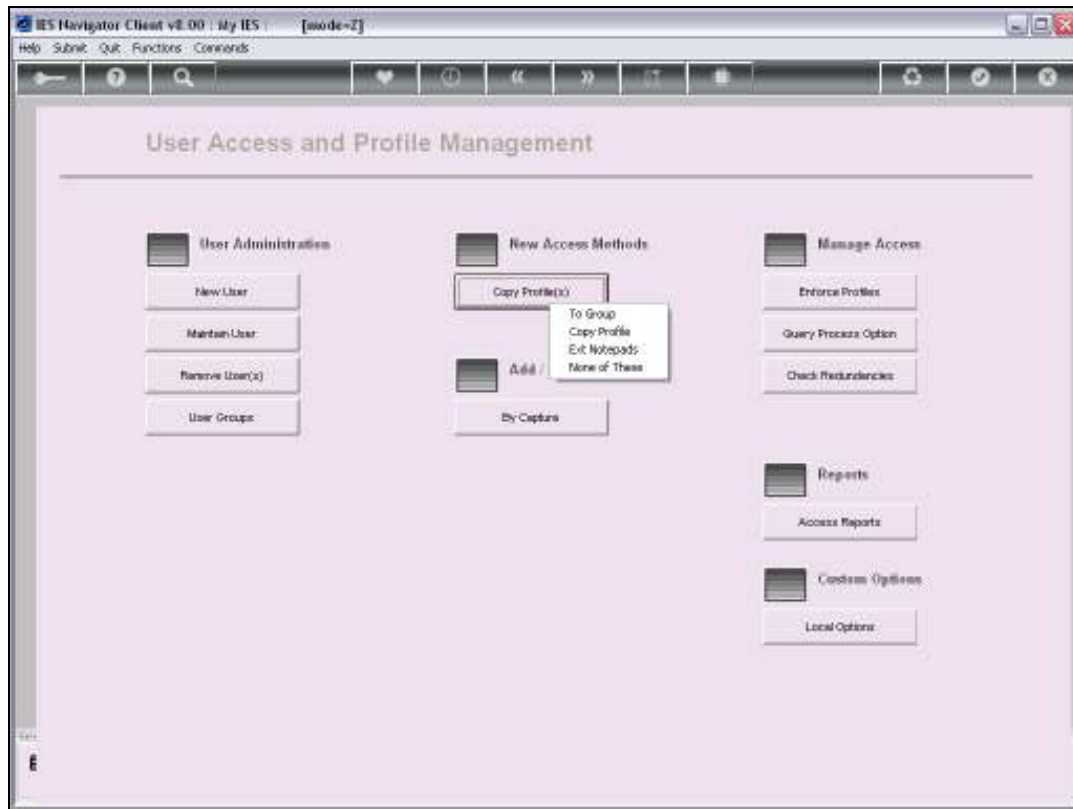




Slide 1

In this tutorial we are looking at the copying of Business Profiles.

As explained in the tutorial on the difference between the Menu Profiles and Business Profiles, the Business Profiles provide additional privileges on top of the Menu Profiles that lead to options that may be opened.

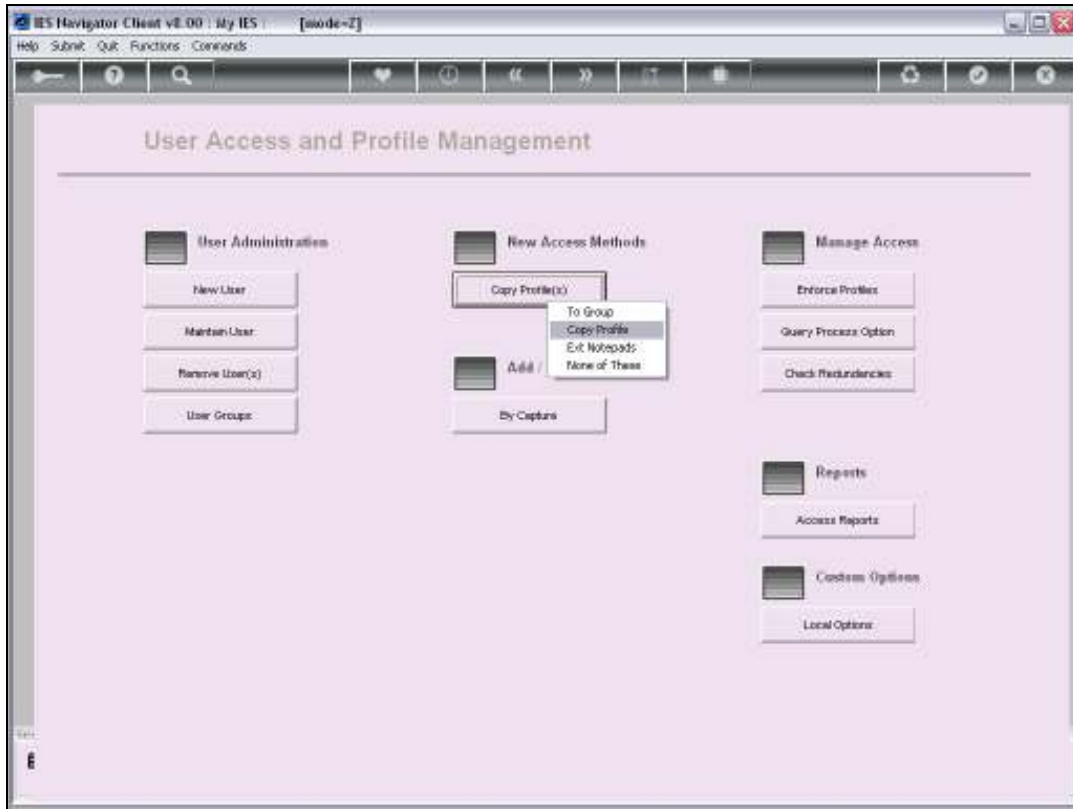


Slide 2

When we do Mirror Access when we create a new User, then the new User will inherit the Business Profiles as well from the User being mirrored.

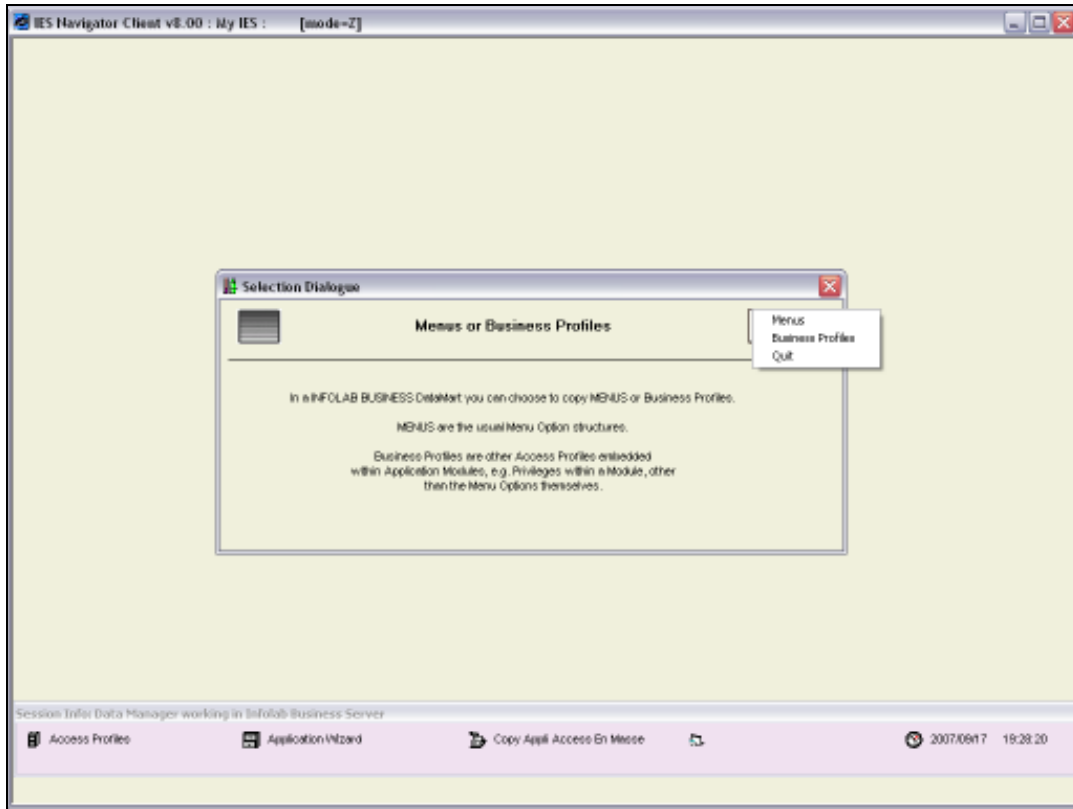
But for Subscription and other Menu Profile construction, Business Profiles are not automatically inherited.

Therefore we find ourselves quite often copying Business Profiles when we set up Users.



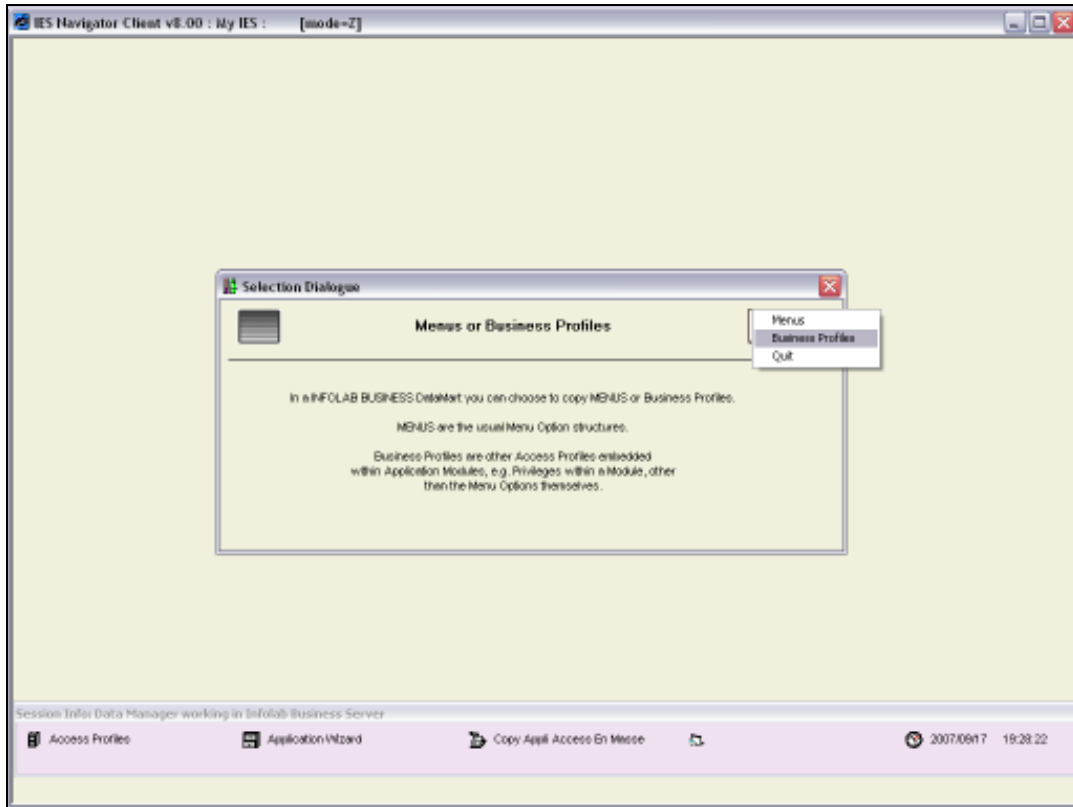
Slide 3

To do this, we will choose the Menu Access Methods and select Copy Profile(s), And then the option "Copy Profile".

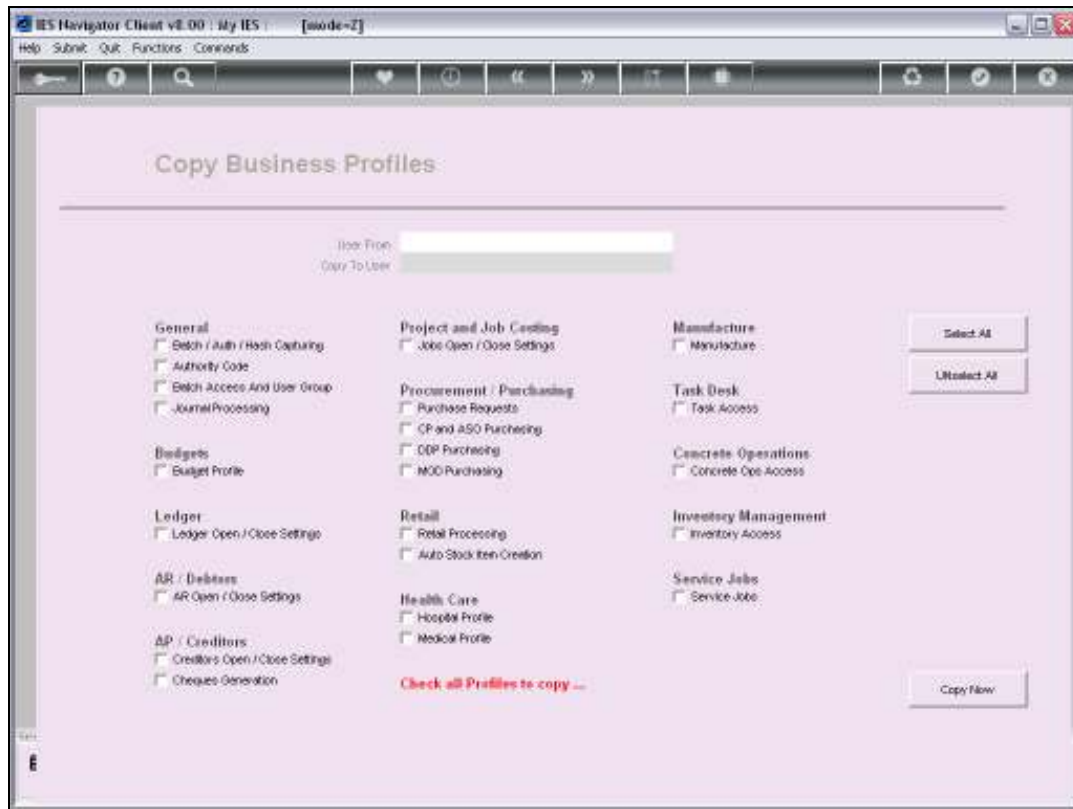


Slide 4

And then instead of choosing Menus, we choose Business Profiles.



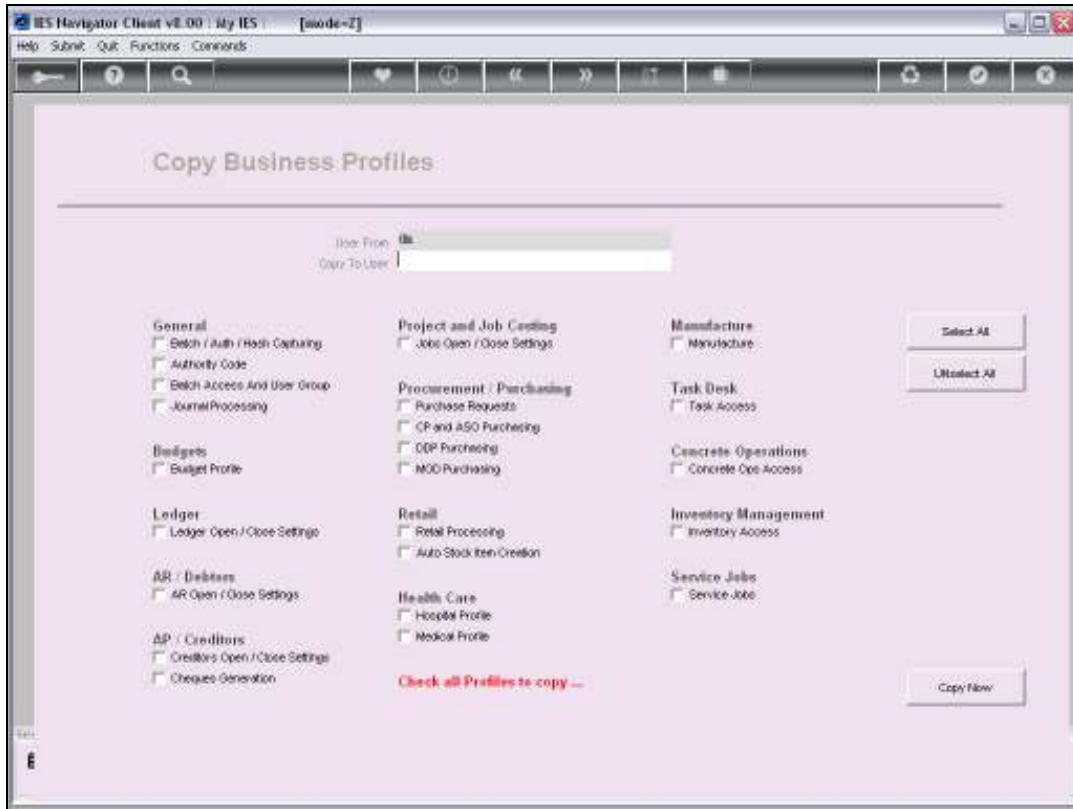
Slide 5



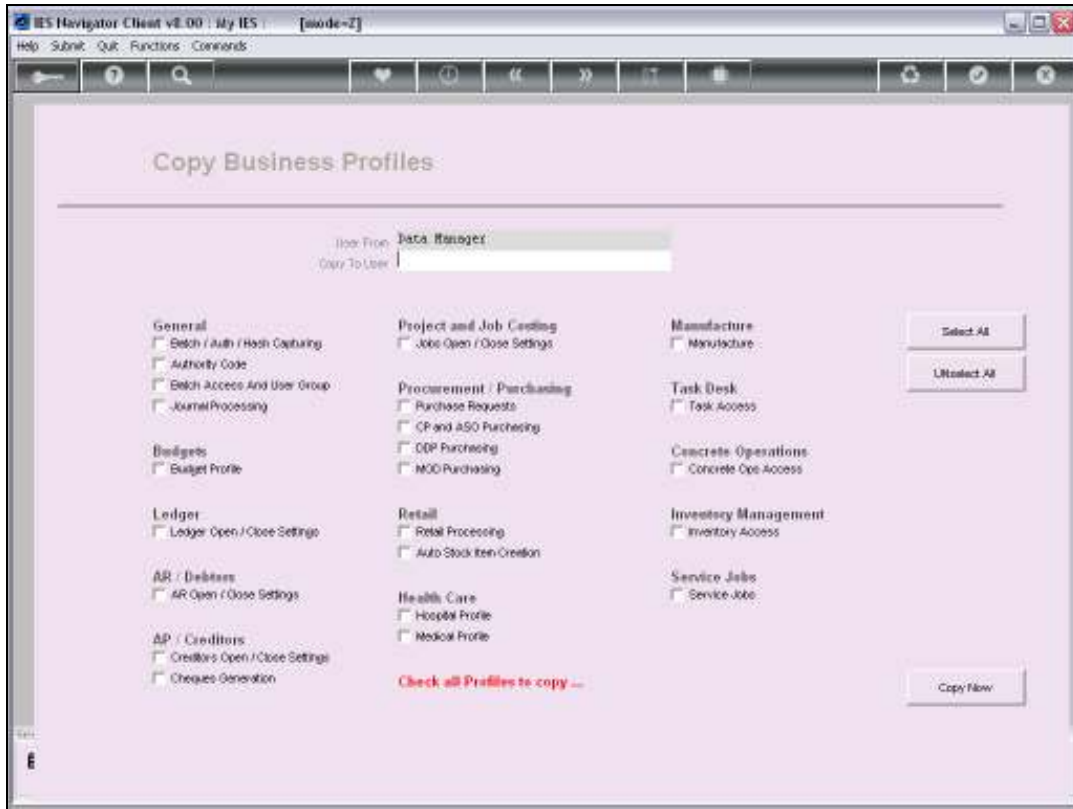
Slide 6

Although Business Profiles are not inherited from Subscription Profiles, we certainly can set up Non Logon Users with the required sets of Business Profiles so that we can easily use them to copy Business Profiles.

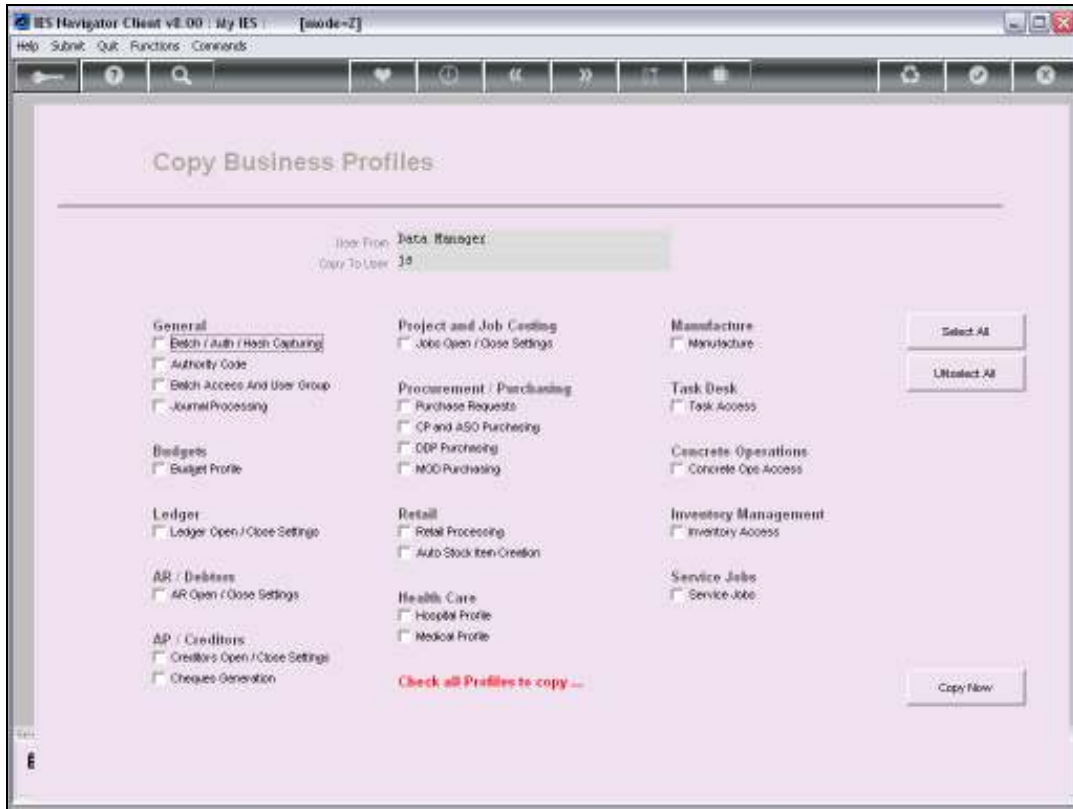
In other words, these Non Logon Users would then be separate from the other ones that contain the menus that we use for subscription and we would use them only to set up the correct Business Profiles for the various Job Position Types, so that we can easily Copy from User DM i.e. the Data Manager, but we can copy from any User code whether a real User or whether not a real User.



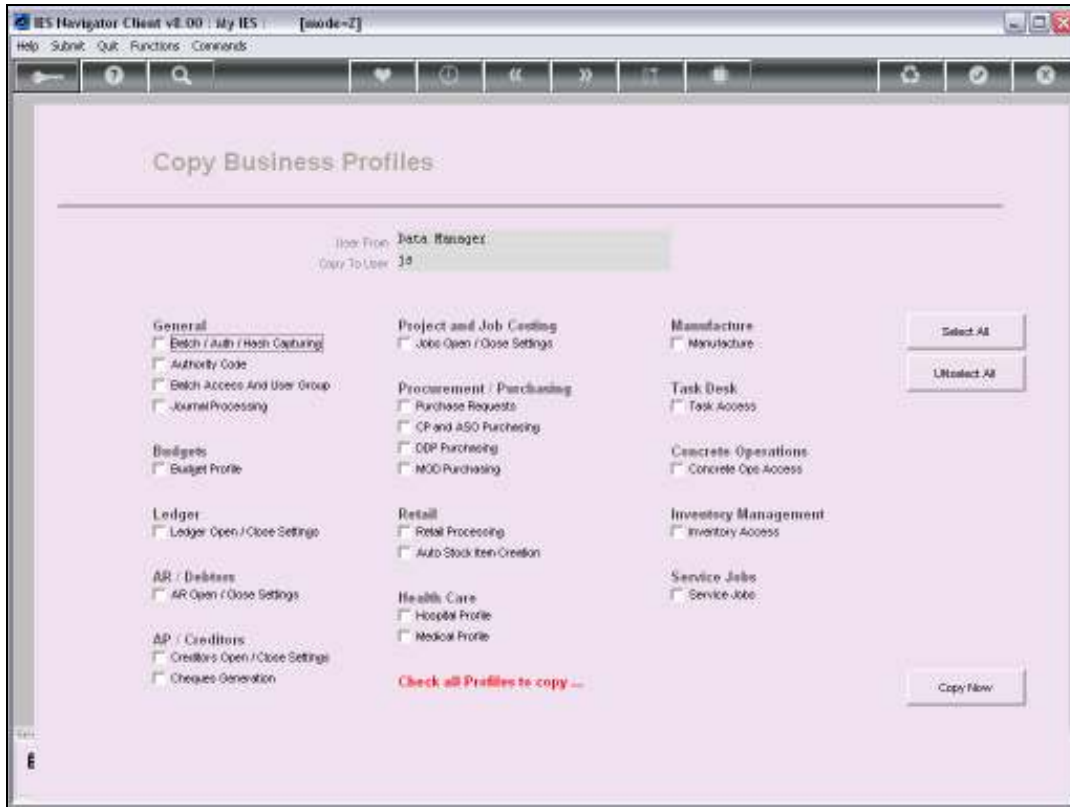
Slide 7



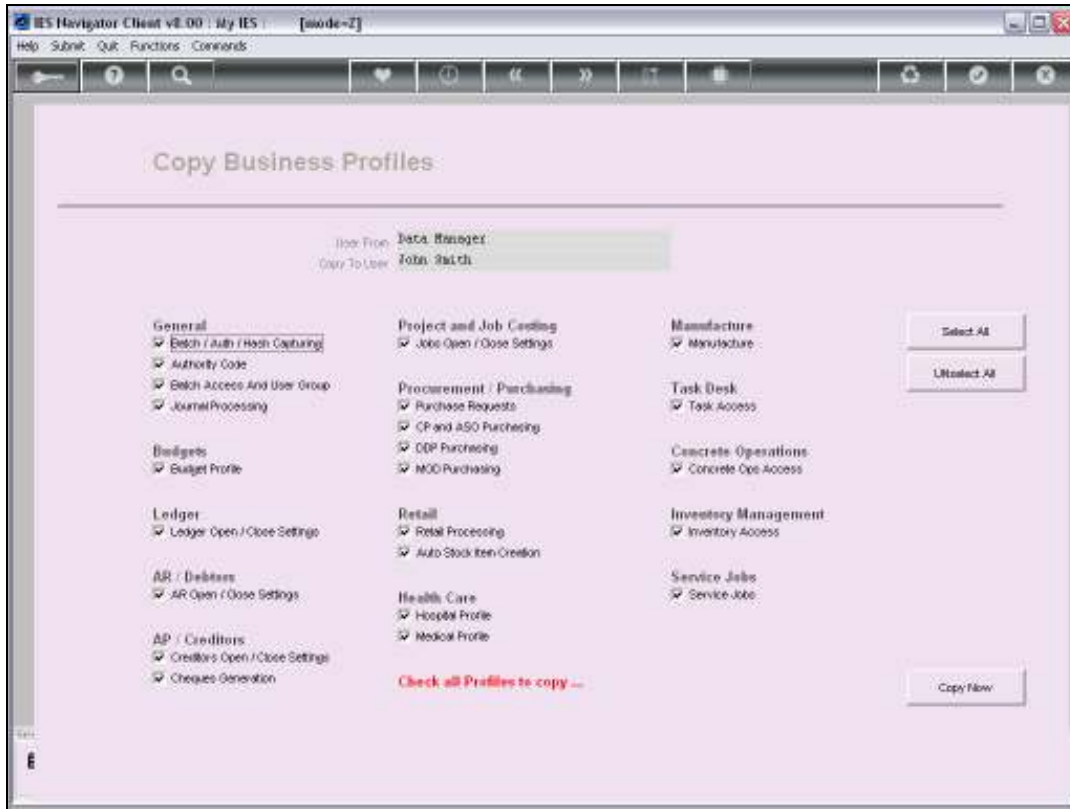
Slide 8



Slide 9

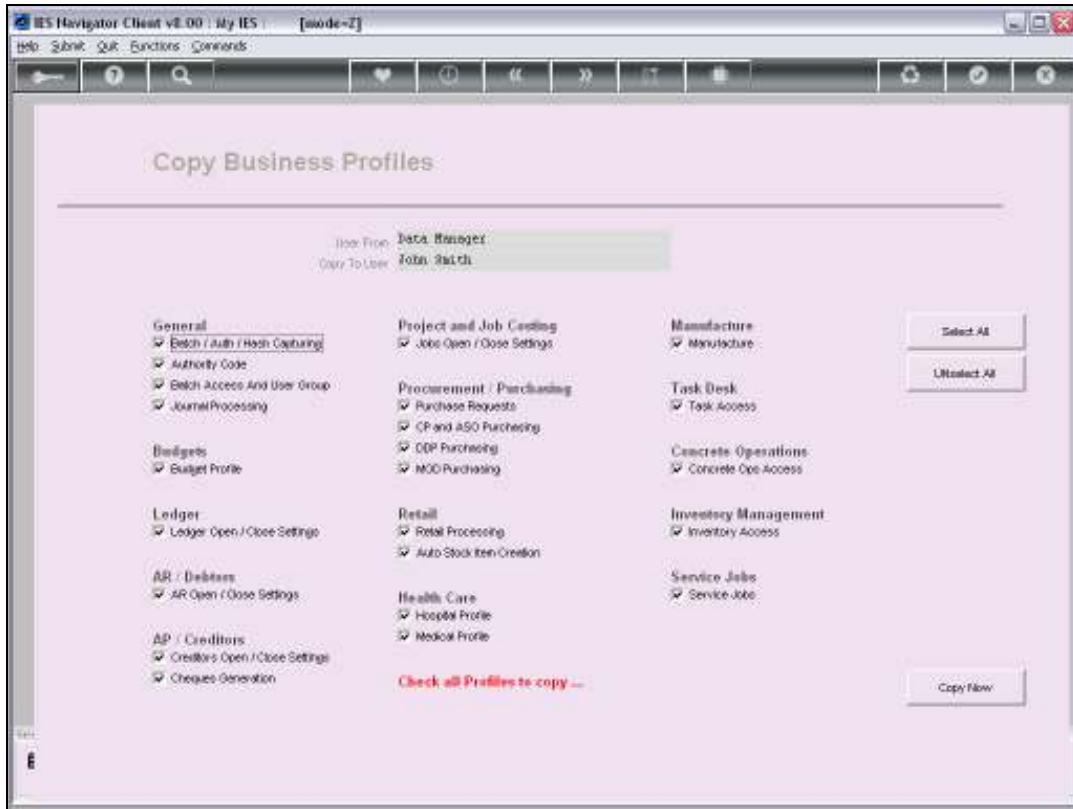


Slide 10

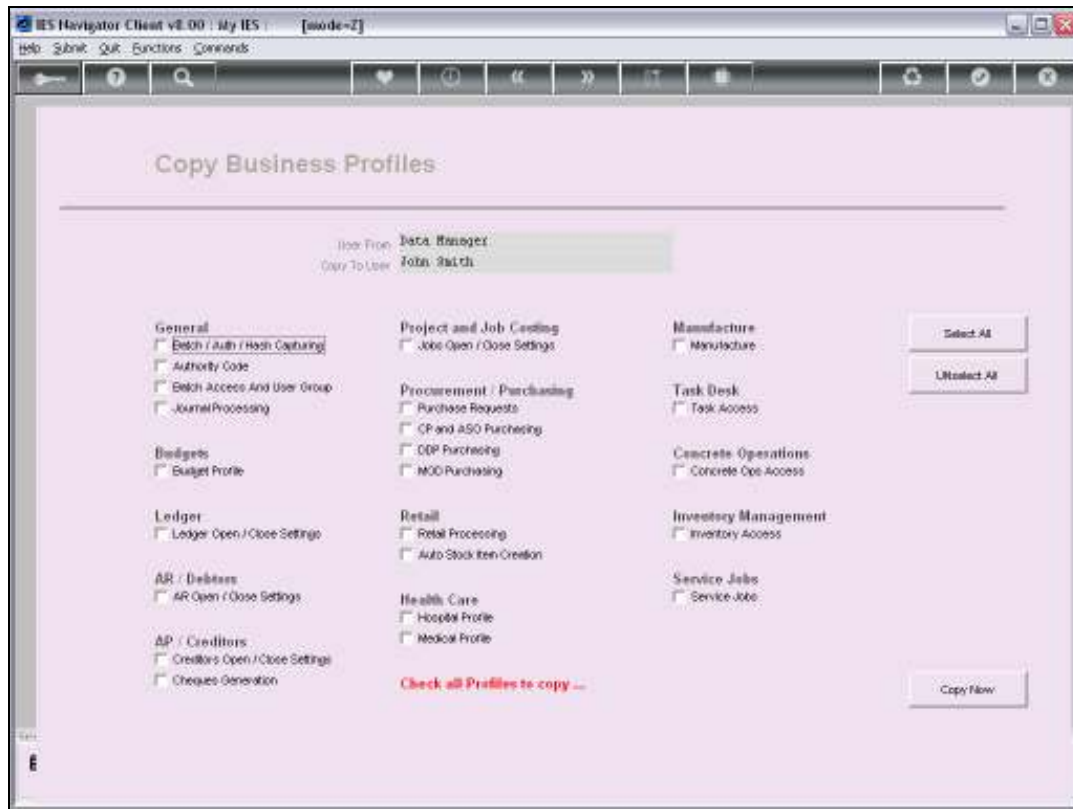


Slide 11

So I am copying from User Data Manager to user John Smith and I use the Select All option to check all the Profiles, i.e. as if I want to copy all the Profiles.



Slide 12



Slide 13

Likewise I can also use the Unselect function to Unselect all the Profiles and then just check one or two.

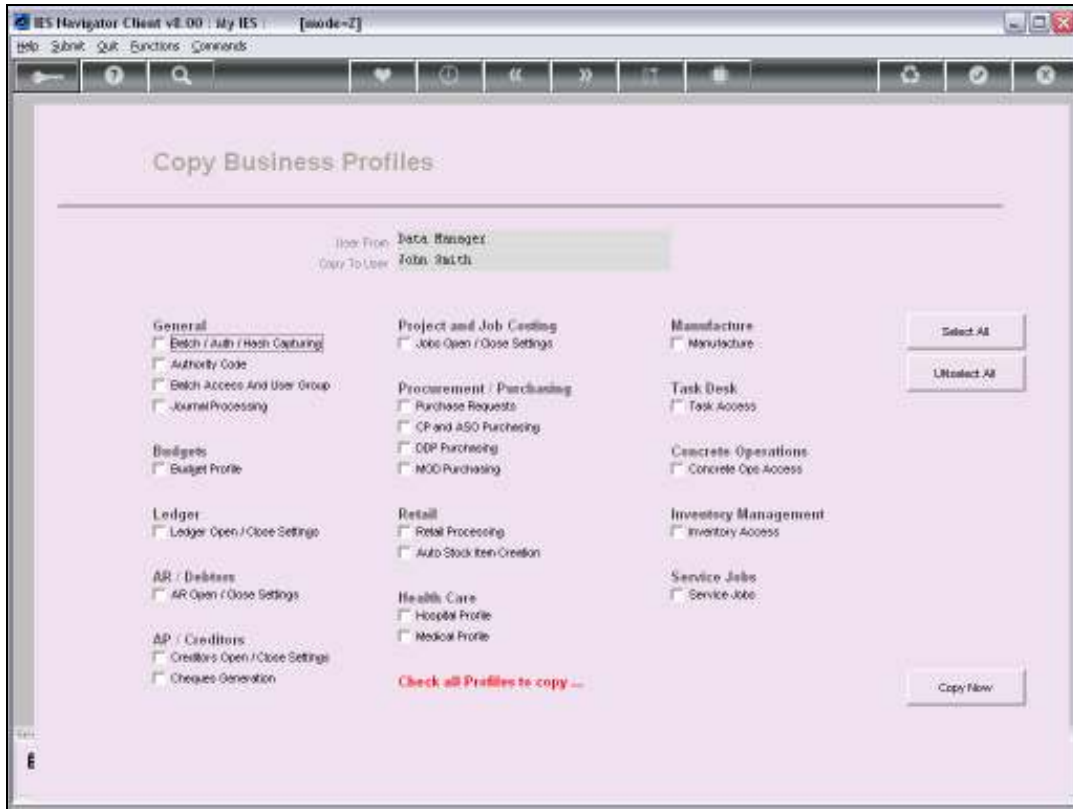
So whichever method gets me the closest to what I want to do.

Selecting All and maybe unchecking one or two or

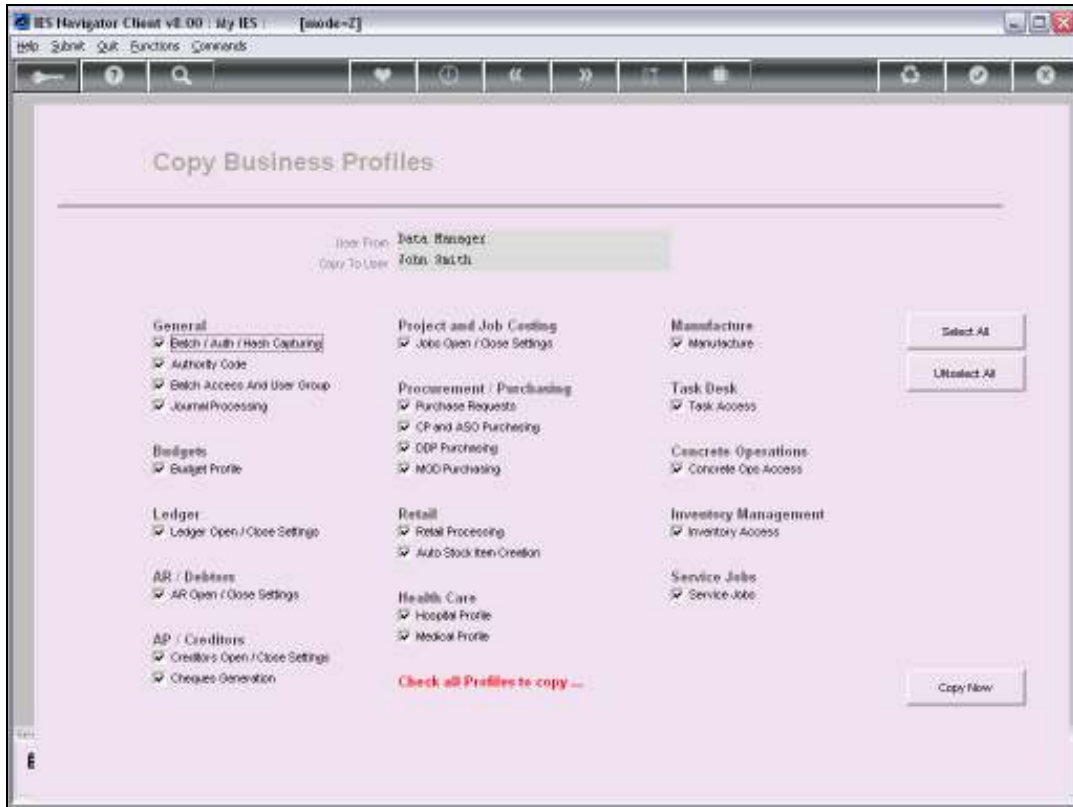
Unselecting All and checking one or two or

Copying All.

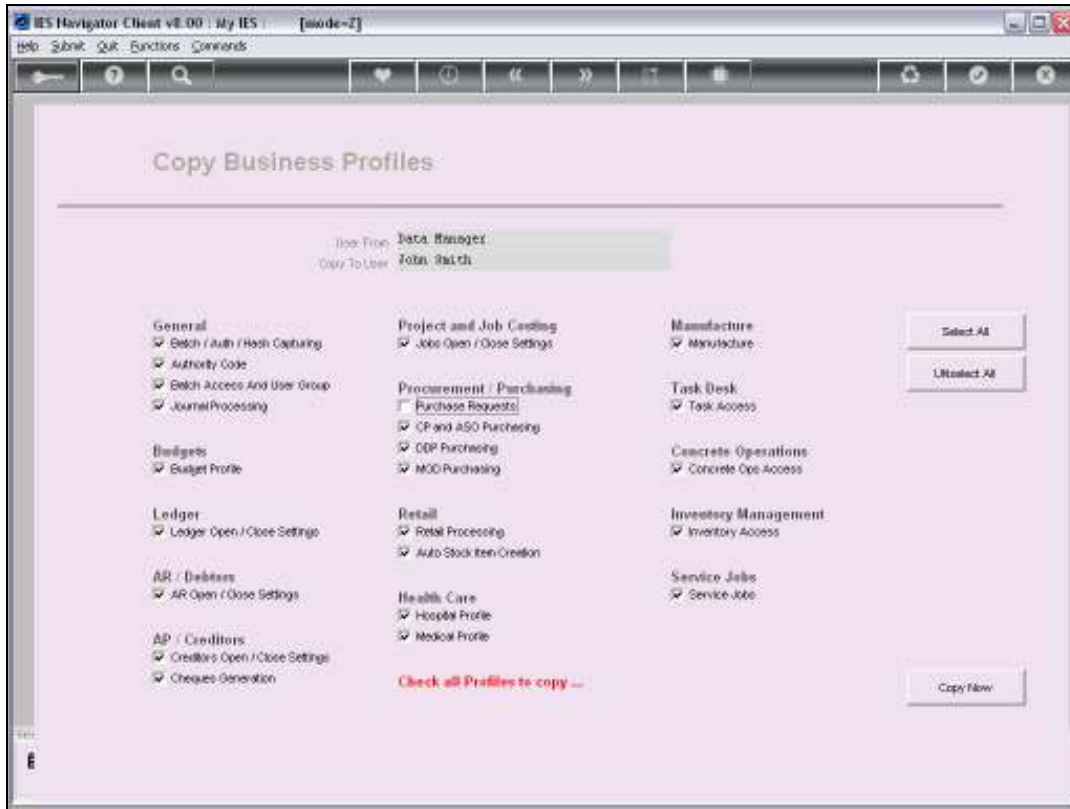
Whatever method brings me the closest and would require the least number of clicks that is the option that I would use.



Slide 14

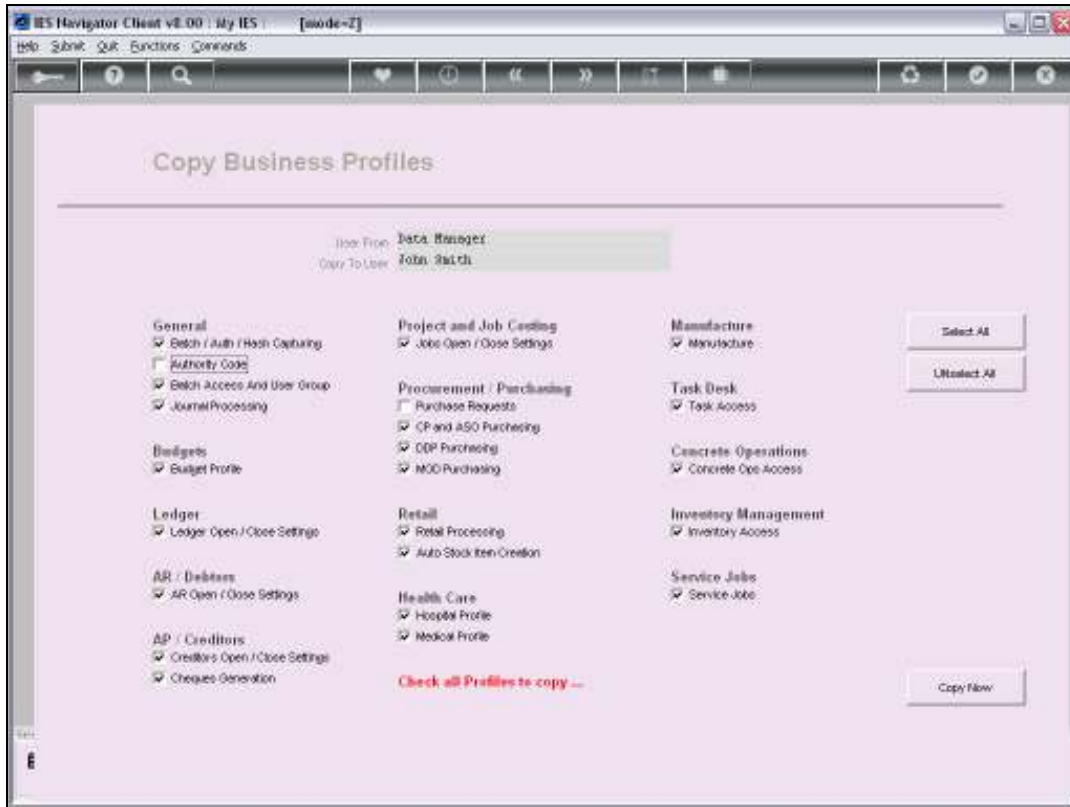


Slide 15

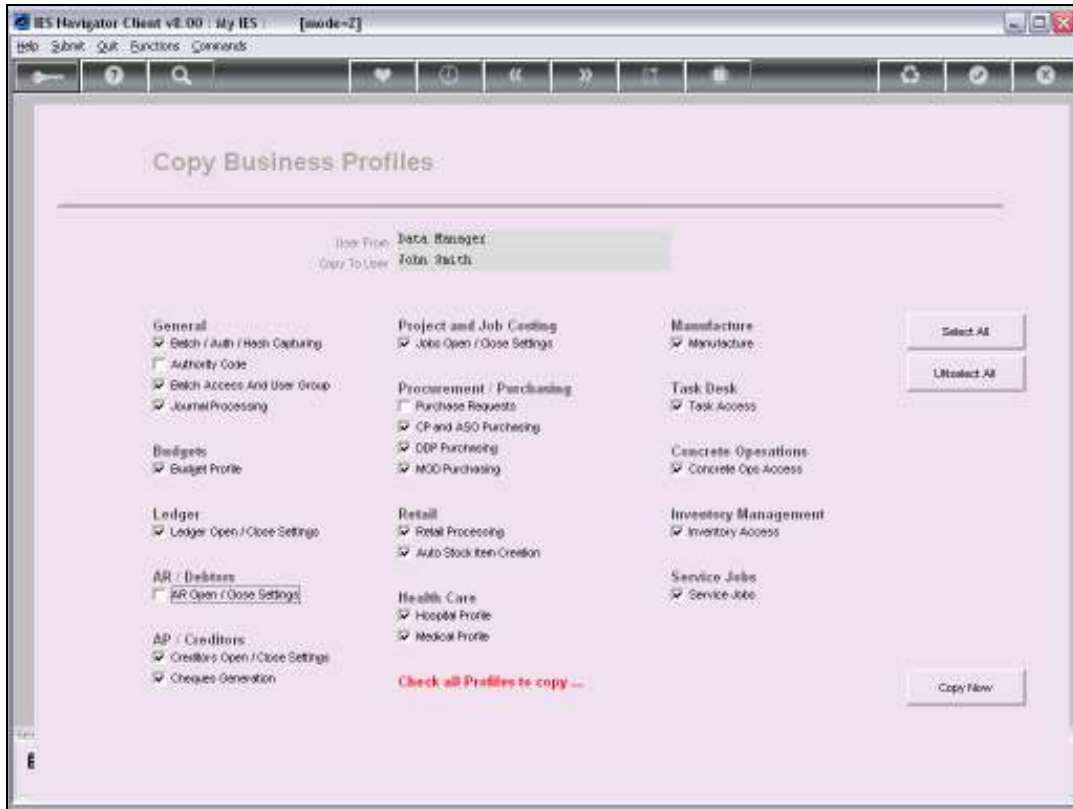


Slide 16

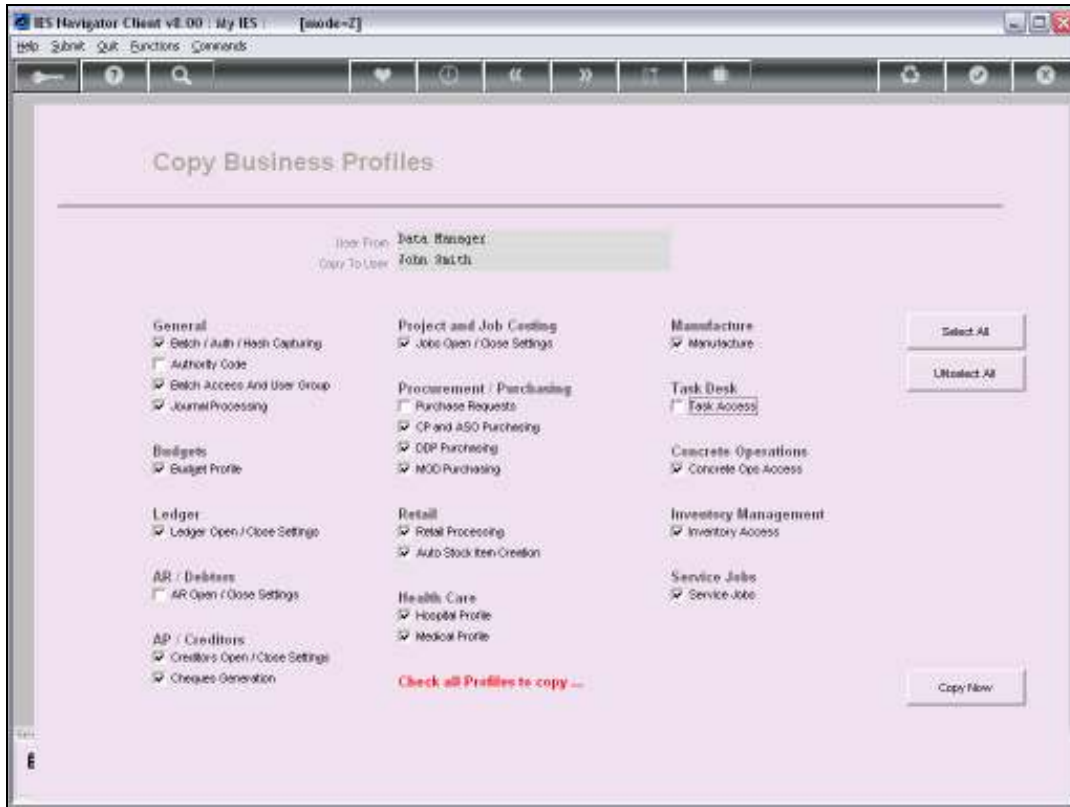
So in this case I am Selecting All and I am going to uncheck a number of them that I do not wish to copy.



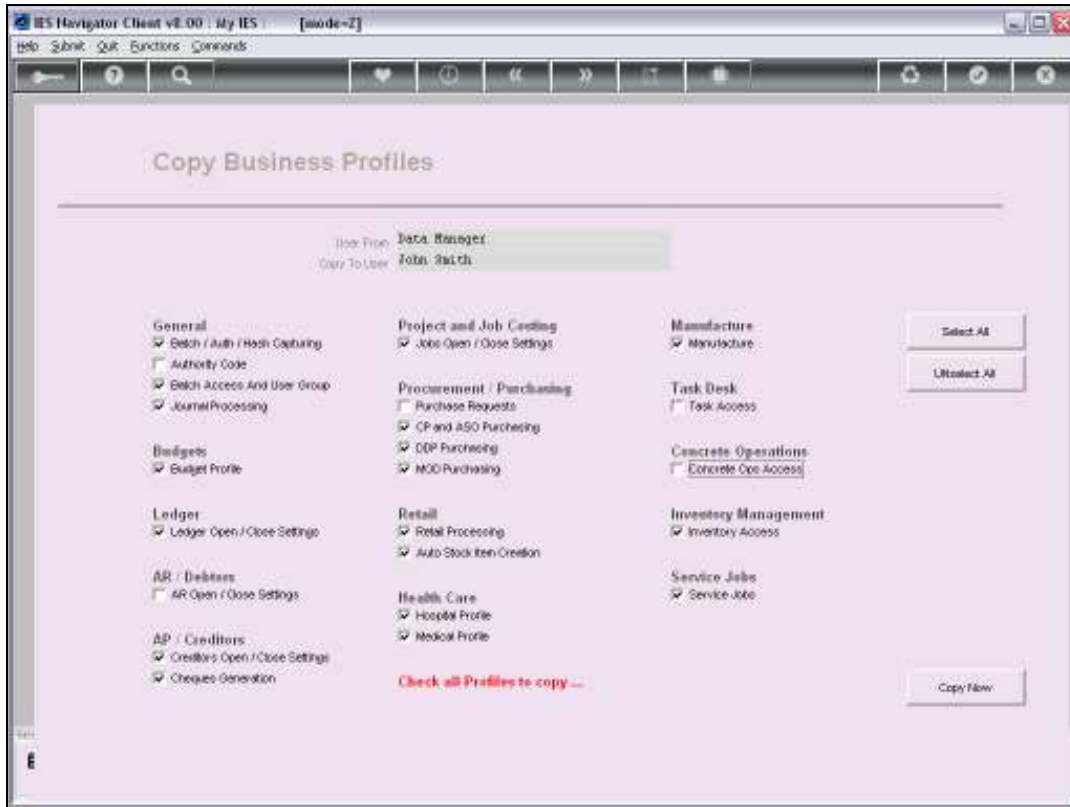
Slide 17



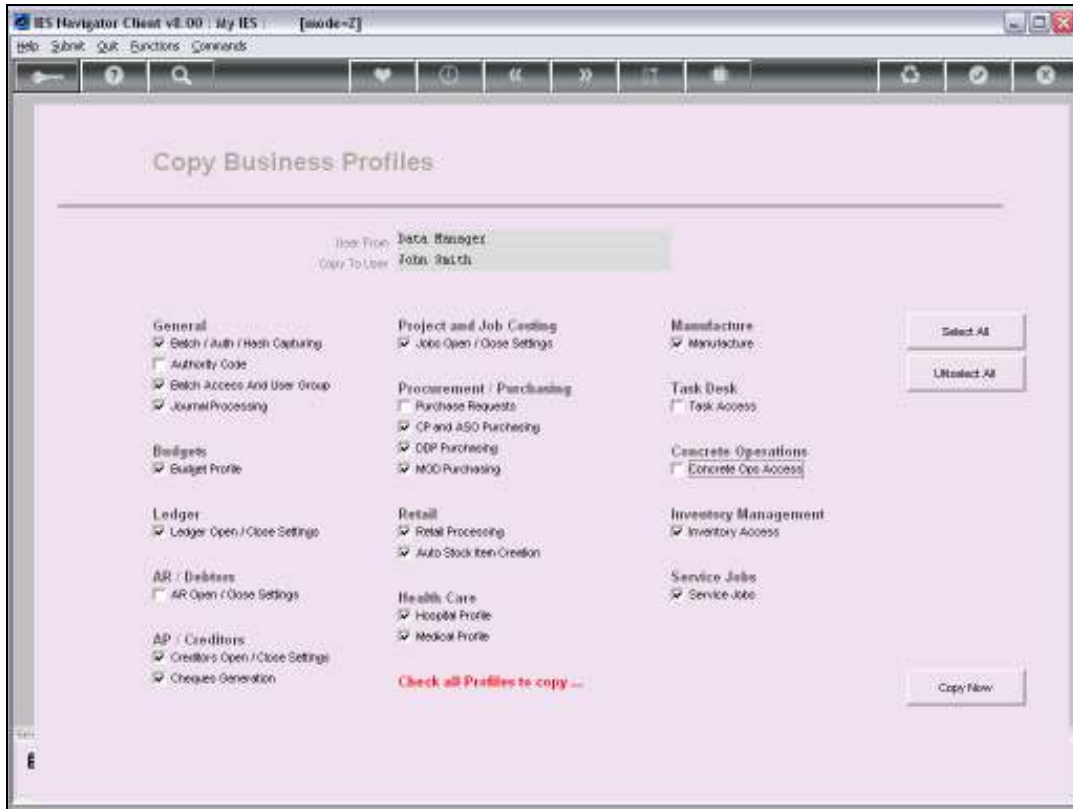
Slide 18



Slide 19

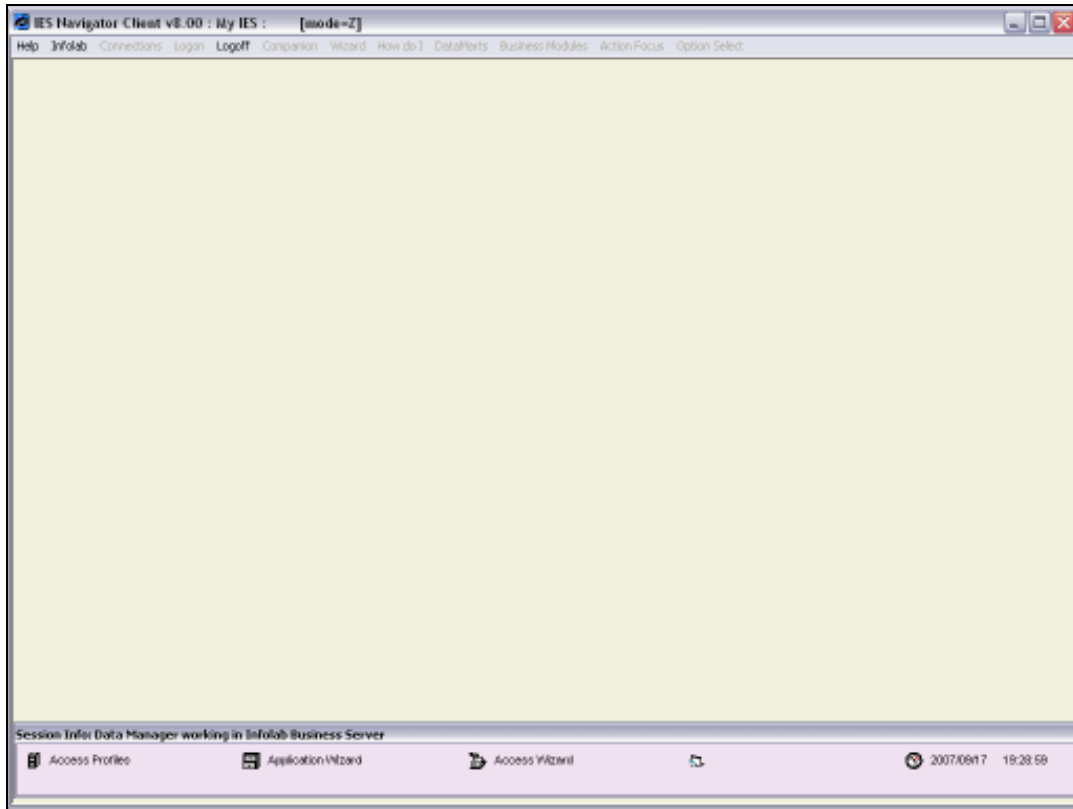


Slide 20



Slide 21

And when I am ready, I simply choose Copy Now.



Slide 22



Slide 23

If we say Copy Now, then all the Profiles selected and found, on the From User, will be copied to the To User.

If any of these are already present, they are overwritten with the properties and attributes of the From User Profiles.

But if there are any other Profiles that are not being copied and that are already present for the To User, then they will remain intact.