

The screenshot shows a web browser window titled "IES Navigator Client v7.74 : My IES : [mode=Z]". The browser's address bar is empty, and the page content is a form titled "Create a new User Logon".

The form is divided into four steps:

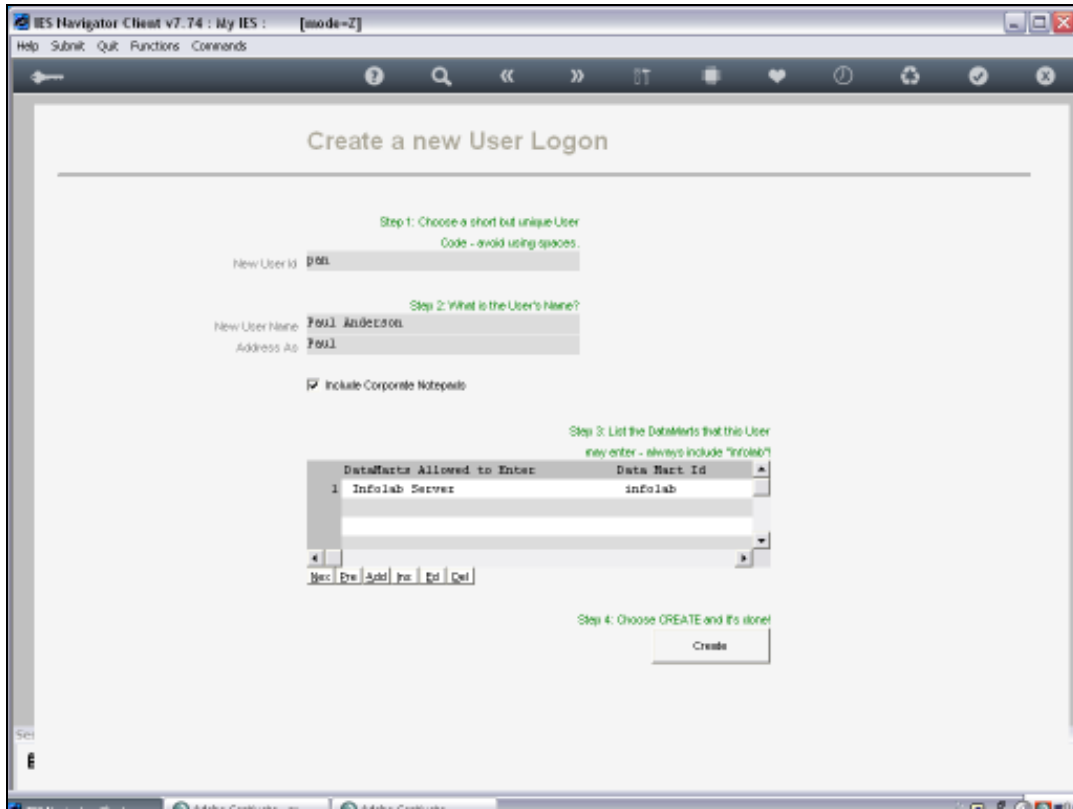
- Step 1: Choose a short but unique User Code - avoid using spaces**  
New User Id:
- Step 2: What is the User's Name?**  
New User Name:   
Address:
- Include Corporate Notebooks
- Step 3: List the Databases that the User may enter - always include "PROD"**  
A table with columns "Data Base Id" and "Name". The first row contains "1" and "info1ab".

Data Base Id	Name
1	info1ab

Buttons: New | Del | Add | Ins | Ed | Del
- Step 4: Choose CREATE and it's done!**

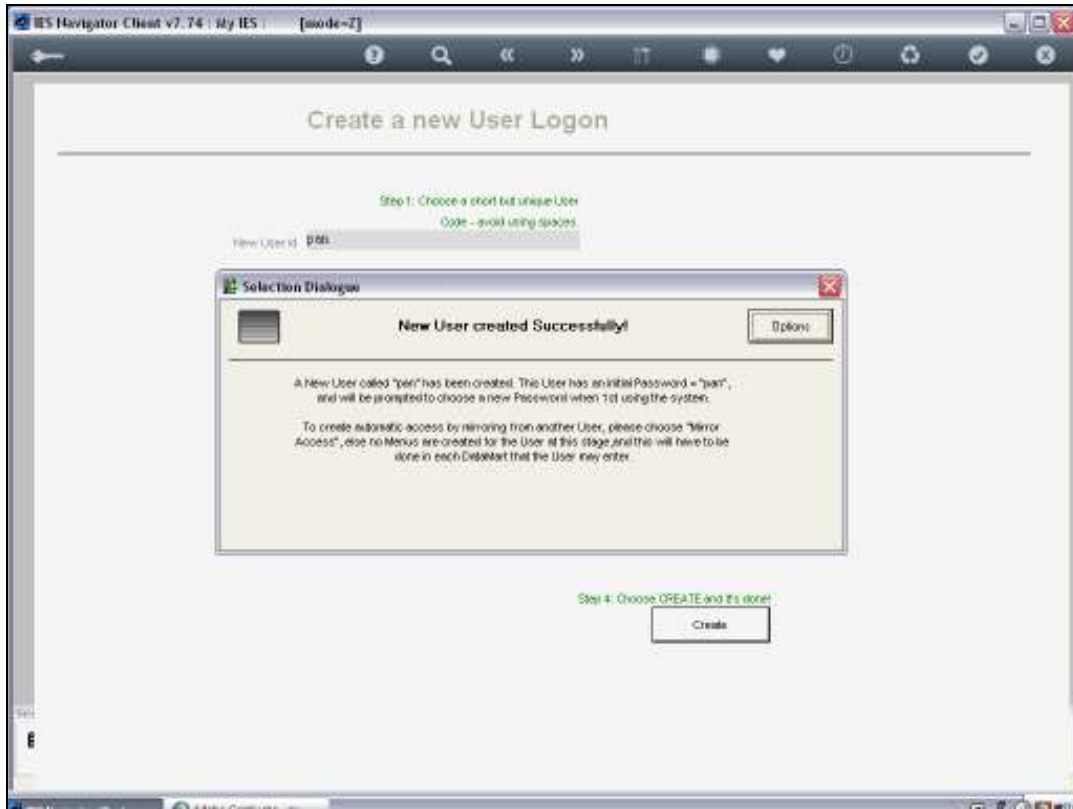
Slide 1

In this tutorial we are looking at Mirror Access. Now what is Mirror Access?  
It is the capability to quickly and seamlessly setup the entire User Profile for a new user.

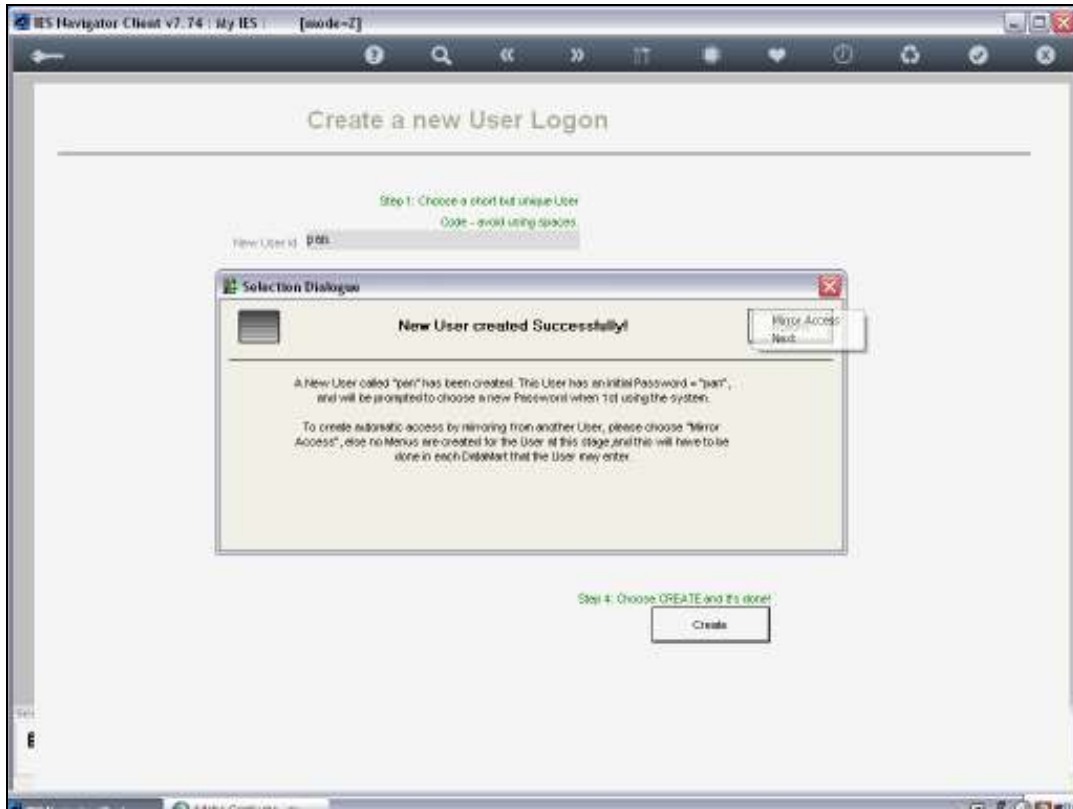


Slide 2

I am showing the screen for the creation of a new user code.  
A new User Master Record.

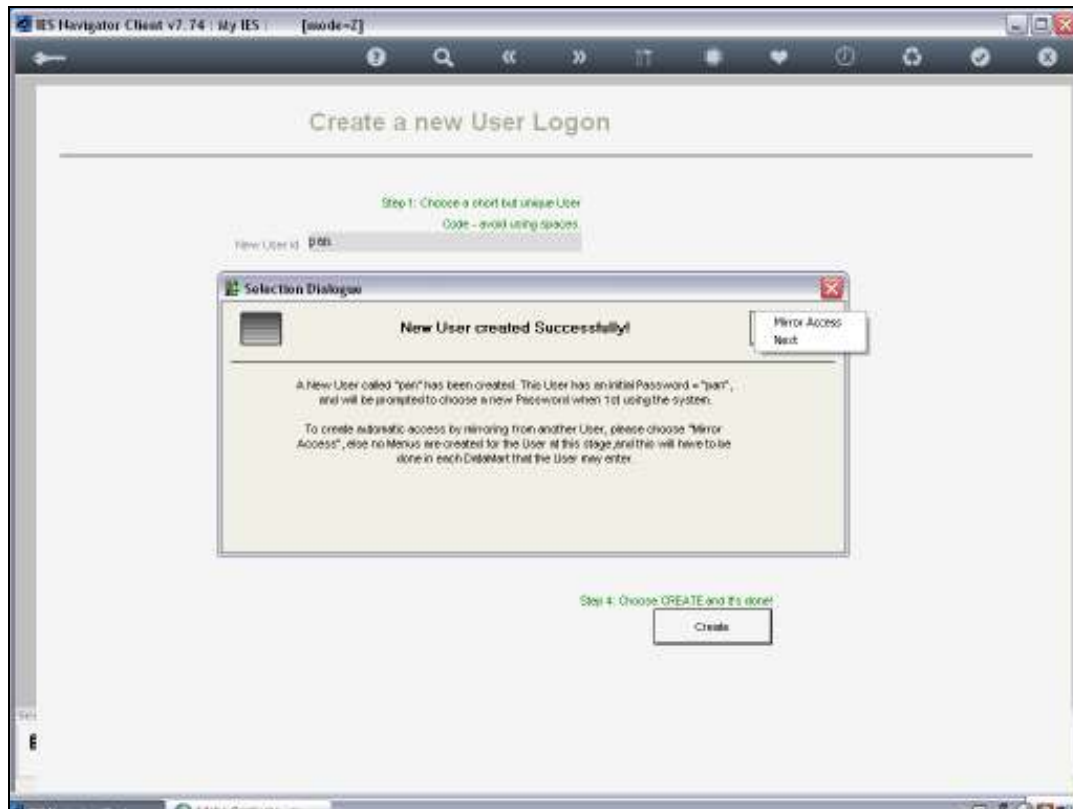


Slide 3



Slide 4

When I choose Create at this particular point...



Slide 5

The system gives me the option to Mirror Access. This is the one and only chance that we will have to use Mirror Access for this new user.

There are of course a number of ways that we can setup User Profiles and if we work smartly it does not have to be a lot of work.

Now Mirror Access is an option that makes it extremely easy, because when I choose Mirror Access I can then choose a User Code and this User Code can be another logon user or it can be a non-logon user. In other words a Profile that is pre-setup that is associated with one or more job positions in the Co.

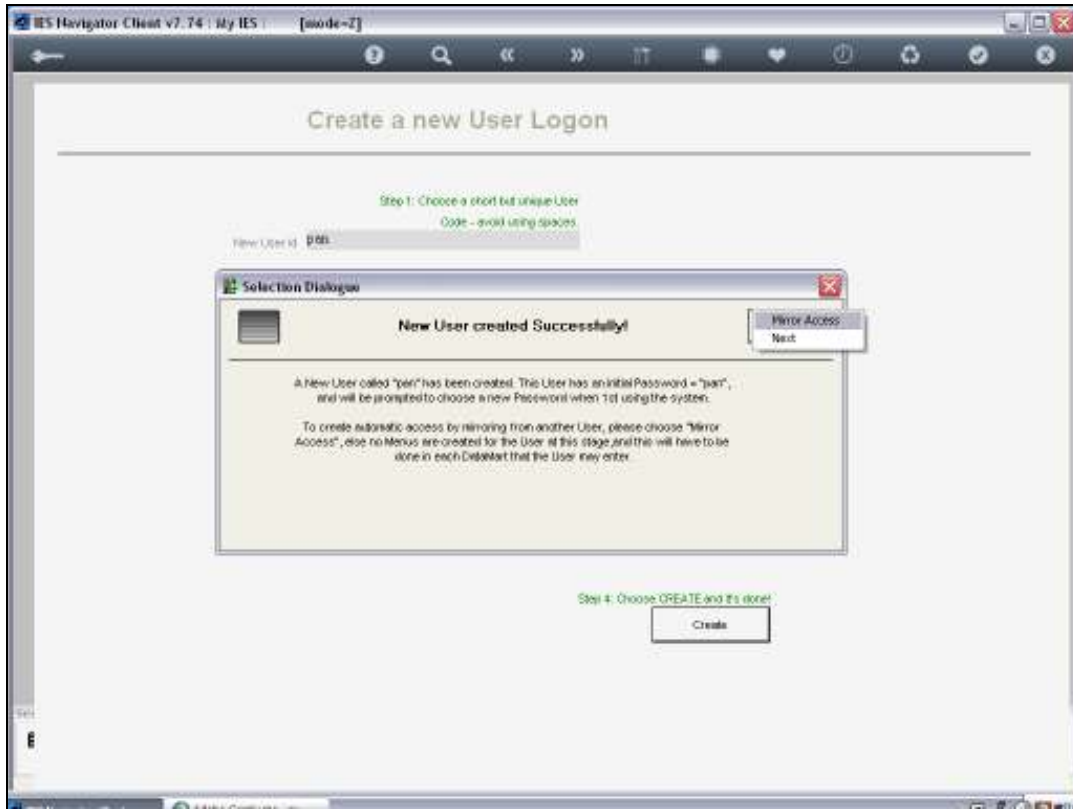
By using that code I can instantly give the new user the entire Access Profile setup for that user. So by using Mirror Access I am saying that this new user should inherit all the access properties of the user code that I specified.

That User Code can be another real user or it can simply be a Profile User that is pre setup for this particular use.

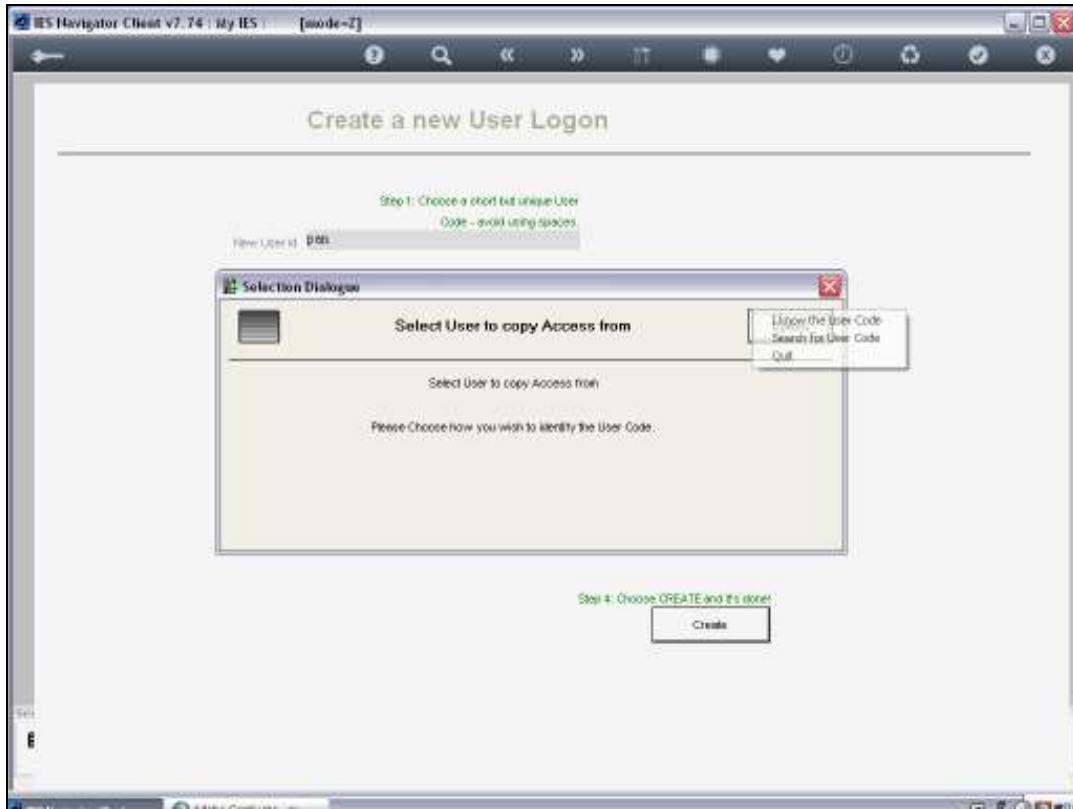


Slide 6

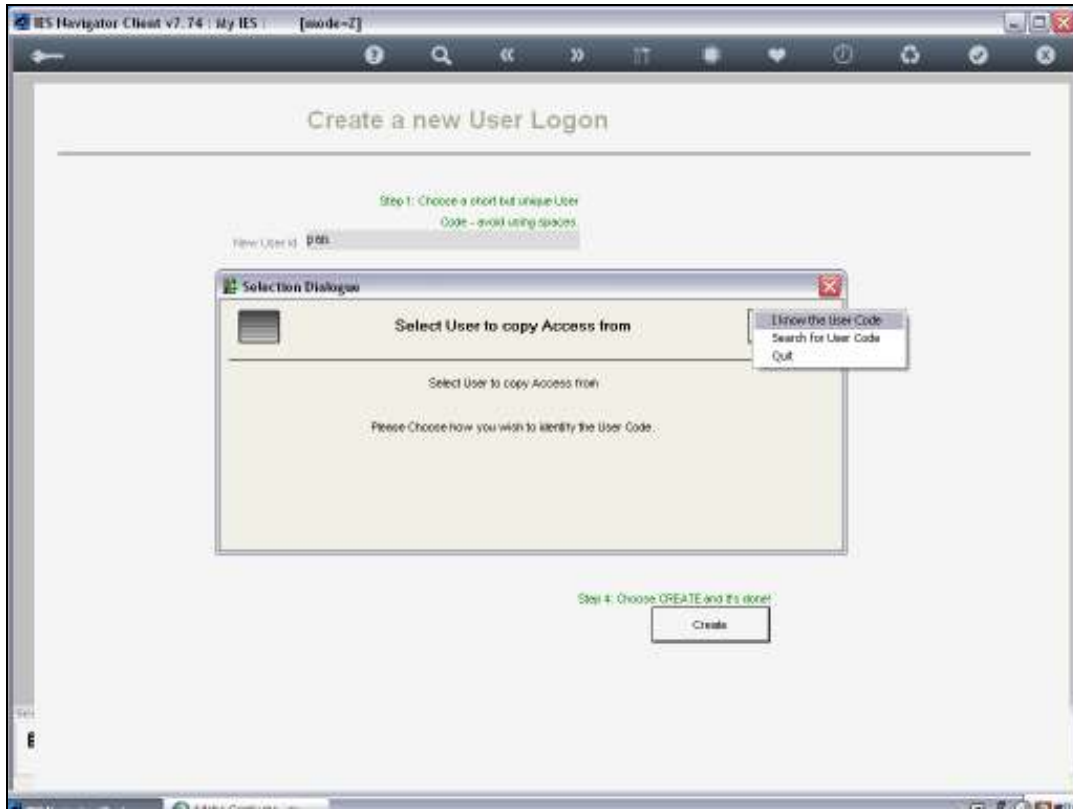
So when I say Mirror Access now.....



Slide 7

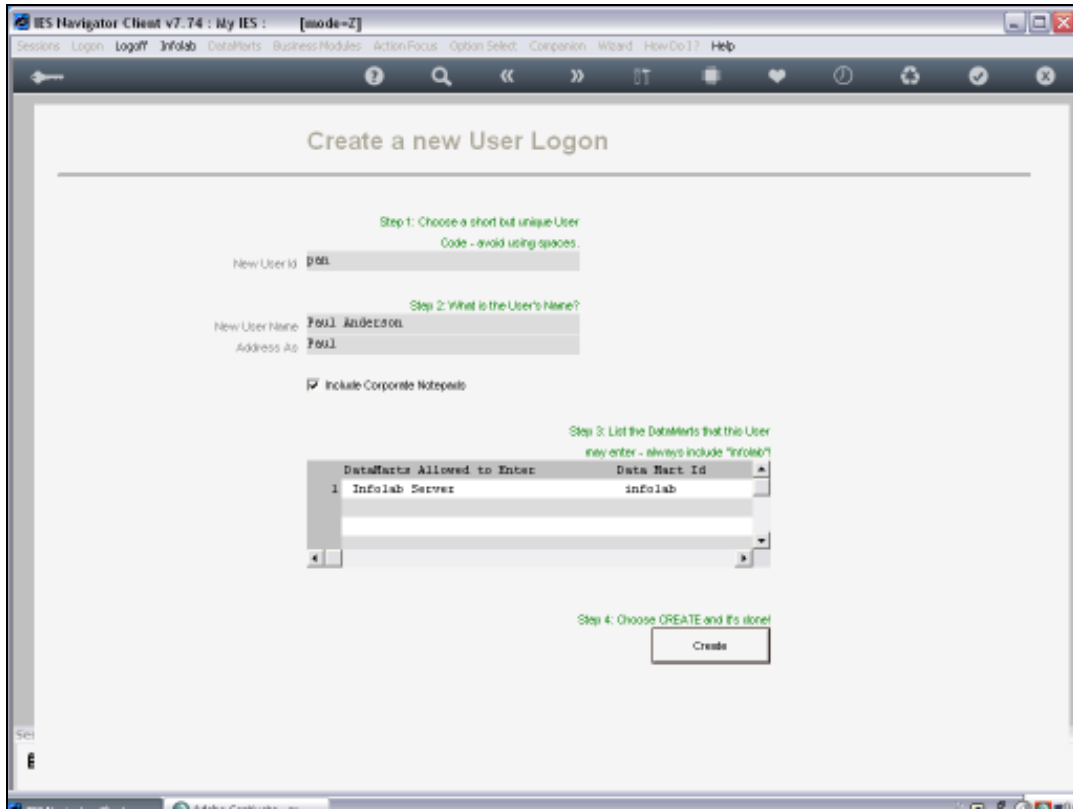


Slide 8



Slide 9

And I can search for the code .....



Slide 10

But in fact I already know the code and I have a User Code called IES-U.



Slide 11

I just say OK....



Slide 12

Now when this new user PAN – Paul Anderson logs onto the system, then at that stage the system will automatically generate all the access for him, which at that stage will be the same as the User Code that we specified that the access must be mirrored from.



Slide 13

The Mirror Access option is entirely optional to use, but if we have our Profiles well setup, then that is the smart way to easily generate access for a new user when we have to create a new user in the system.