



Slide 1

Slide notes: We have a Report option for Credit Notes that have been issued, to AR Debtors.



Slide 2
Slide notes:

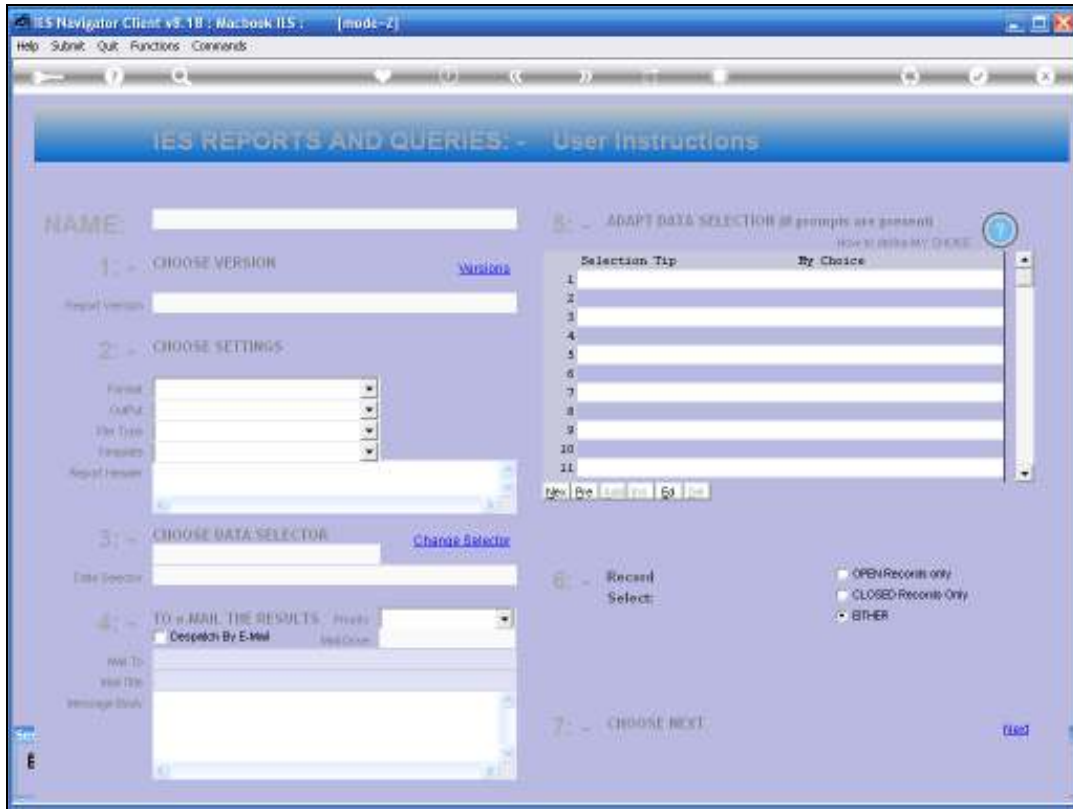


Slide 3
Slide notes:



Slide 4

Slide notes: The Report includes only direct Credit Notes, in other words, not including Credit Notes issued by Retail or other Applications.



Slide 5
Slide notes:

IES Navigator Client v8.1B : Macbook ILS : [mode-Z]

Help Submit Quit Functions Comments

IES REPORTS AND QUERIES: - User Instructions

NAME: AR DEBTORS' CREDIT NOTES ISSUED

1: - CHOOSE VERSION [Windows](#)
 Report Version: System Version: AR Debtor Credit Notes

2: - CHOOSE SETTINGS
 Format: REPORT
 Output: FILE
 File Type: Data HTML FILE
 Format: 04: Infolab
 Report Header: AR Debtor Credit Notes

3: - CHOOSE DATA SELECTOR
 Field Choice: Transaction-All-areas AR DEBTOR CREDIT NOTES HE 0407

4: - TO e-MAIL THE RESULTS. Priority: Normal
 Dispatch By E-Mail
 Mail To: AR Debtors' Credit Notes Issued
 Mail To: Report by Mail

5: - ADAPT DATA SELECTION @ groups are present
 HOW TO DISPLAY CHECKS

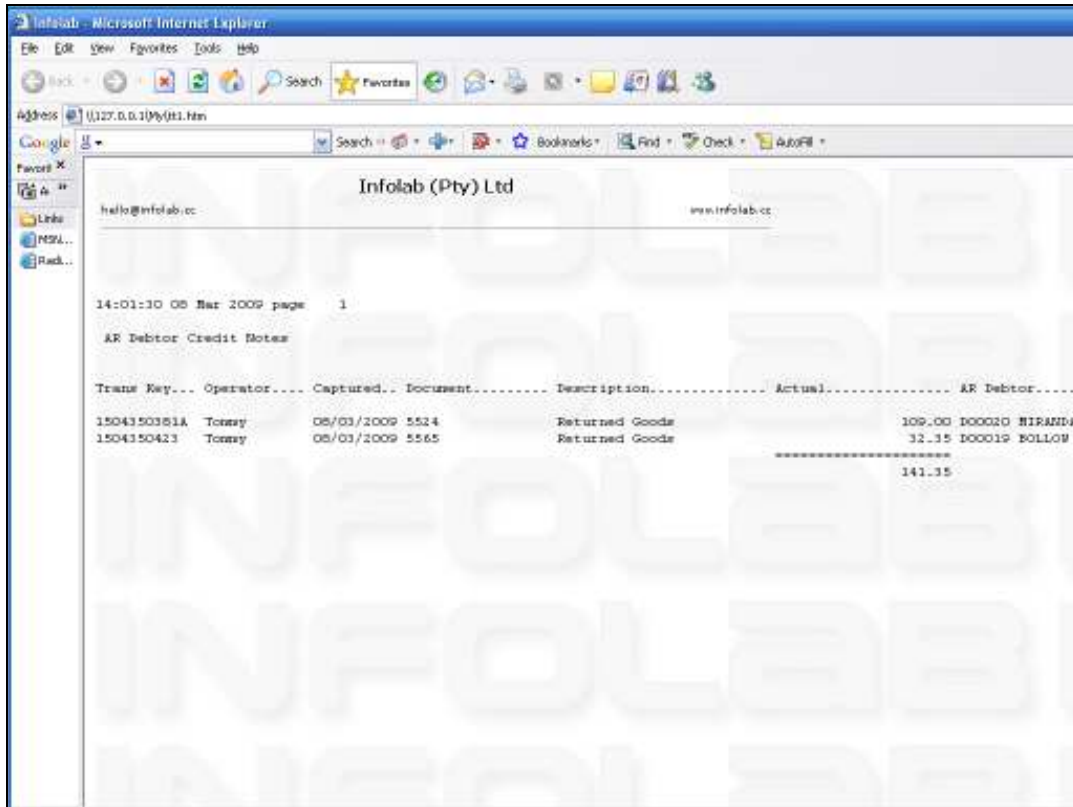
Selection Tip	By Choice
1 Process Date From ?	01/03/2009
2 Process Date To ?	08/03/2009

6: - Record Select:
 OPEN Records Only
 CLOSED Records Only
 EITHER

7: - CHOOSE NEXT [Next](#)

Slide 6

Slide notes: We can choose a date range for the issuing of Credit Notes, and the result will include only Credit Notes issued during this date range.



Slide 7

Slide notes: And in this example, we have 2 Credit Notes issued.