



Slide 1

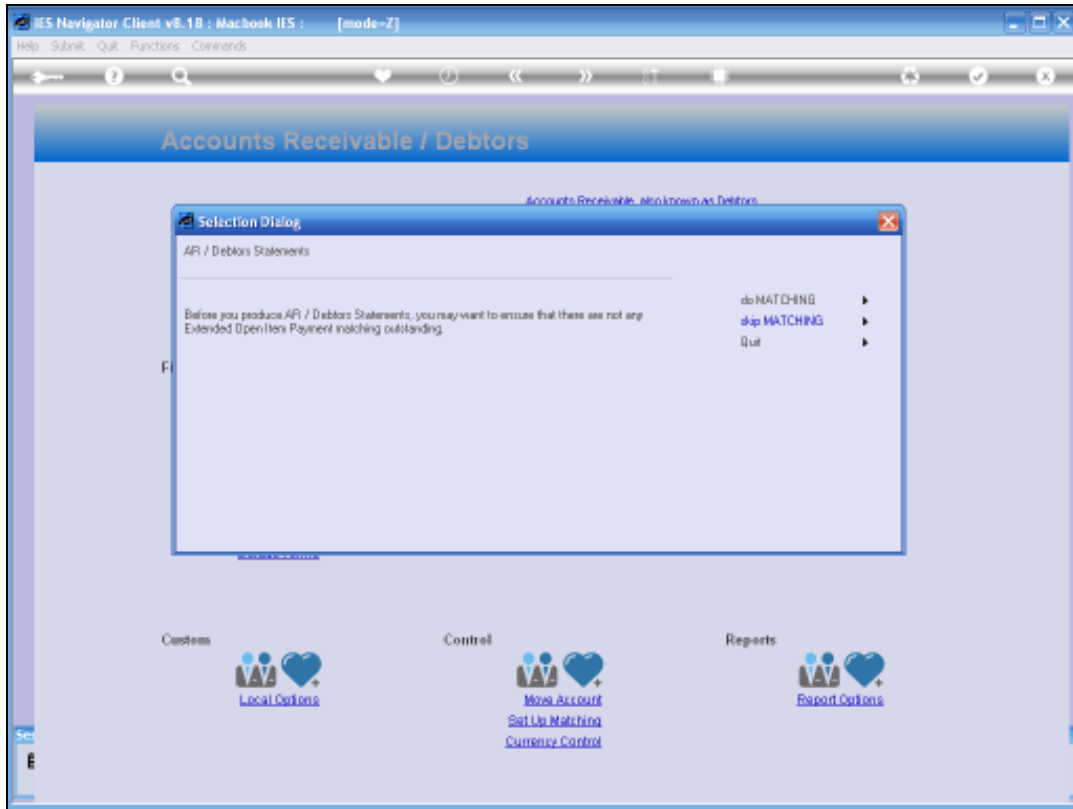
Slide notes: Customer Statements can be produced on demand from the AR Debtor screens, and can also be produced on demand, in bulk printing. In this tutorial, we are looking at the bulk printing options.



Slide 2
Slide notes:



Slide 3
Slide notes:



Slide 4

Slide notes: We have an optional step to perform Matching before proceeding with Statement production, since the Statements will include some Ageing indicators, and Ageing indicators are not accurate if Matching is not up to date.



Slide 5
Slide notes:



Slide 6

Slide notes: If the local Statement version for legacy printing is customized and designed for use with pre-printed stationery, then it is advisable to check this field.

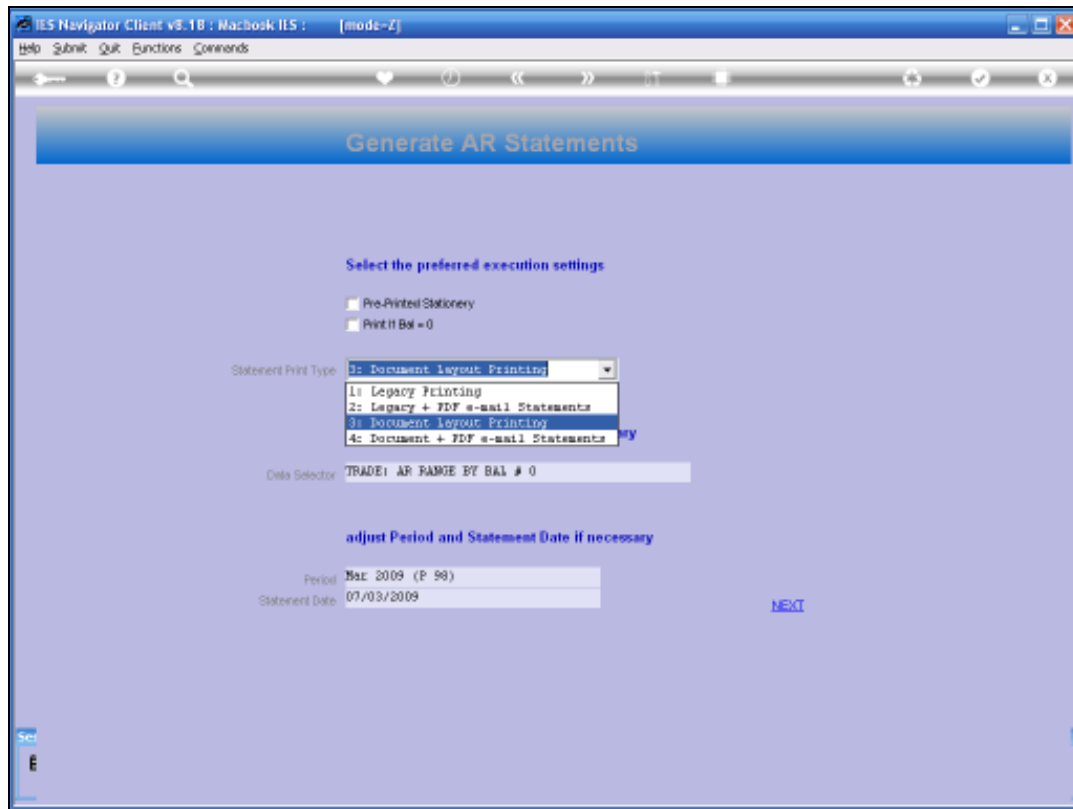


Slide 7

Slide notes: If Statements with zero balance should be included and printed, then we check this option also.



Slide 8
Slide notes:



Slide 9

Slide notes: And then we have a number of format Versions to choose from. We can use Legacy Statements or Legacy together with PDF by e-mail, or we can use HTML Document format, and also combine that with PDF by e-mail. If unsure which option to use, please check the Help for a detailed explanation.



Slide 10

Slide notes: We may apply a Data Selector of choice.



Slide 11

Slide notes:



Slide 12

Slide notes: And we also select the Statement Period and Statement Date.



Slide 13

Slide notes:



Slide 14

Slide notes:



Slide 15

Slide notes:



Slide 16

Slide notes:

IES Navigator Client v8.1B : Macbook ILS : [mode-Z]

Help Submit Quit Functions Comments

IES REPORTS AND QUERIES: - User Instructions

NAME:

1: - CHOOSE VERSION [Details](#)
Report Version:

2: - CHOOSE SETTINGS
Format:
Output:
File Type:
Template:
Report Header:

3: - CHOOSE DATA SELECTOR [Change Selector](#)
Plain Choice:
Data Selector:

4: - TO e-MAIL THE RESULTS Priority:
 Dispatch By E-Mail [Add Drive](#)
Mail To:
Mail To:
Message Body:

5: - ADAPT DATA SELECTION @ groups are present [How to adapt MY CHOICE](#)

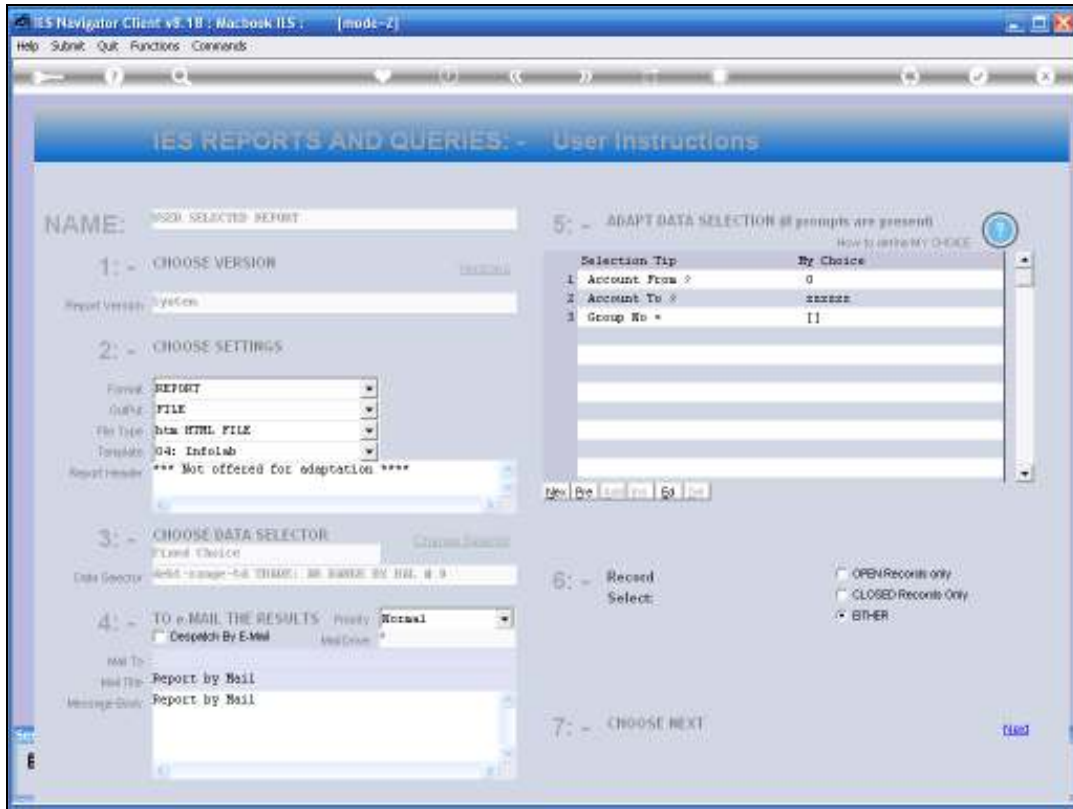
Selection Tip	By Choice
1 Account From >	0
2 Account To >	xxxxxx
3 Group No *	[]

6: - Record Select
 OPEN Records only
 CLOSED Records Only
 EITHER

7: - CHOOSE NEXT [Next](#)

Slide 17

Slide notes: The applied Data Selector may include some runtime prompts.



Slide 18
Slide notes:

The screenshot shows a web browser window titled "IES Navigator Client v8.1B ; Macbook ILS ; [mode-Z]". The browser's address bar contains the URL "http://www.ies.com/WordNav/Default.aspx?Page=WebForm10000Select". The main content area has a blue header with the text "Generate AR Statements". Below the header, there are several sections for configuration:

- Select the preferred execution settings:**
 - Print Stationery
 - Print Bal = 0
- Statement Print Type:** A dropdown menu is set to "Ac Document + PDF e-mail Statement".
- please adjust the Data Selector if necessary:**
 - Data Selector:** A text input field containing "TRADE1 AP RANGE BY BAL # 0".
- adjust Period and Statement Date if necessary:**
 - Period:** A text input field containing "Mar 2009 (P 99)".
 - Statement Date:** A text input field containing "31/03/2009".

A blue "NEXT" button is located at the bottom right of the form area.

Slide 19

Slide notes: And then Statement production will commence, the format and layout to be as locally applied or customized.



Slide 20

Slide notes:

