



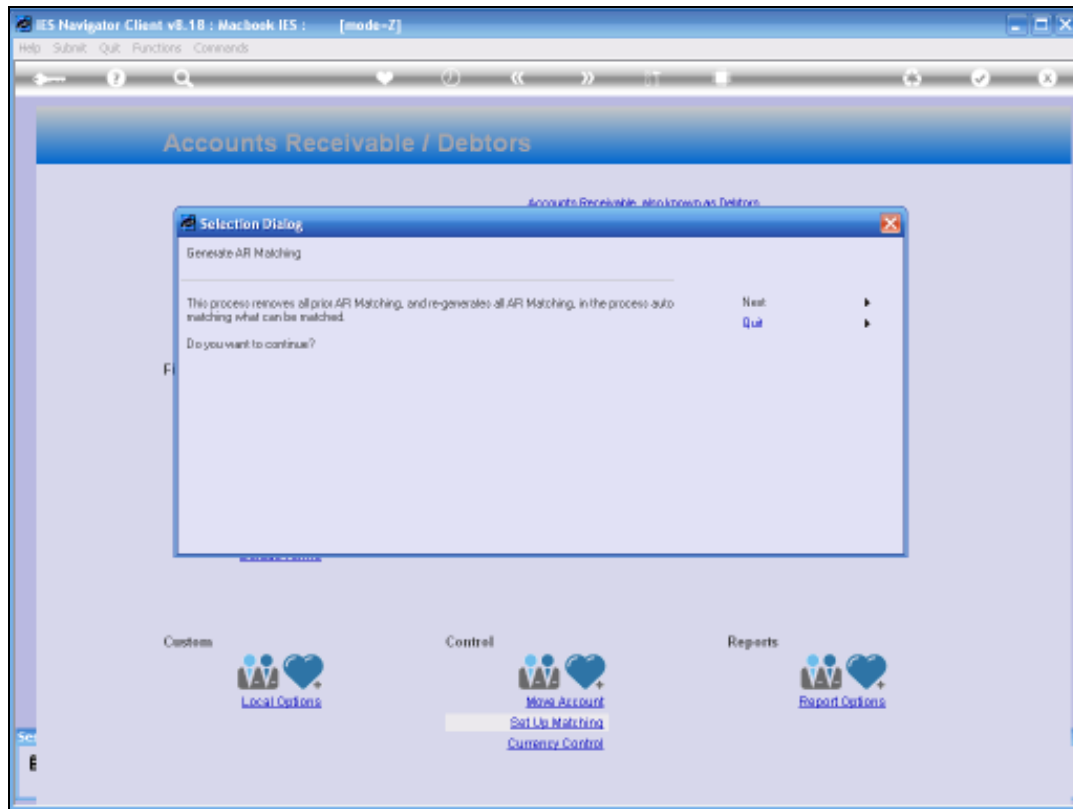
Slide 1

Slide notes: We will now consider the 'Set Up Matching' option. This option can be used at any time,

but usually it is ONLY used during a new implementation. Why so? Because this option will remove all prior matching on all AR Debtor Accounts, and then perform automatic matching of what can be matched by the system.

Therefore, it is quite useful during implementation, when we may import historical transactions on Debtor Accounts from another system, and then we want the system to

match these transactions and leave us with a clean start.



Slide 2

Slide notes: If we want to apply the set up, then just choose NEXT, else choose QUIT. This is not a reversible action, so be careful not to apply it if unsure. There is an additional protection by the system not to allow this option to the User unless it is also specified on the Debtors Business Profile for the User.



Slide 3
Slide notes: