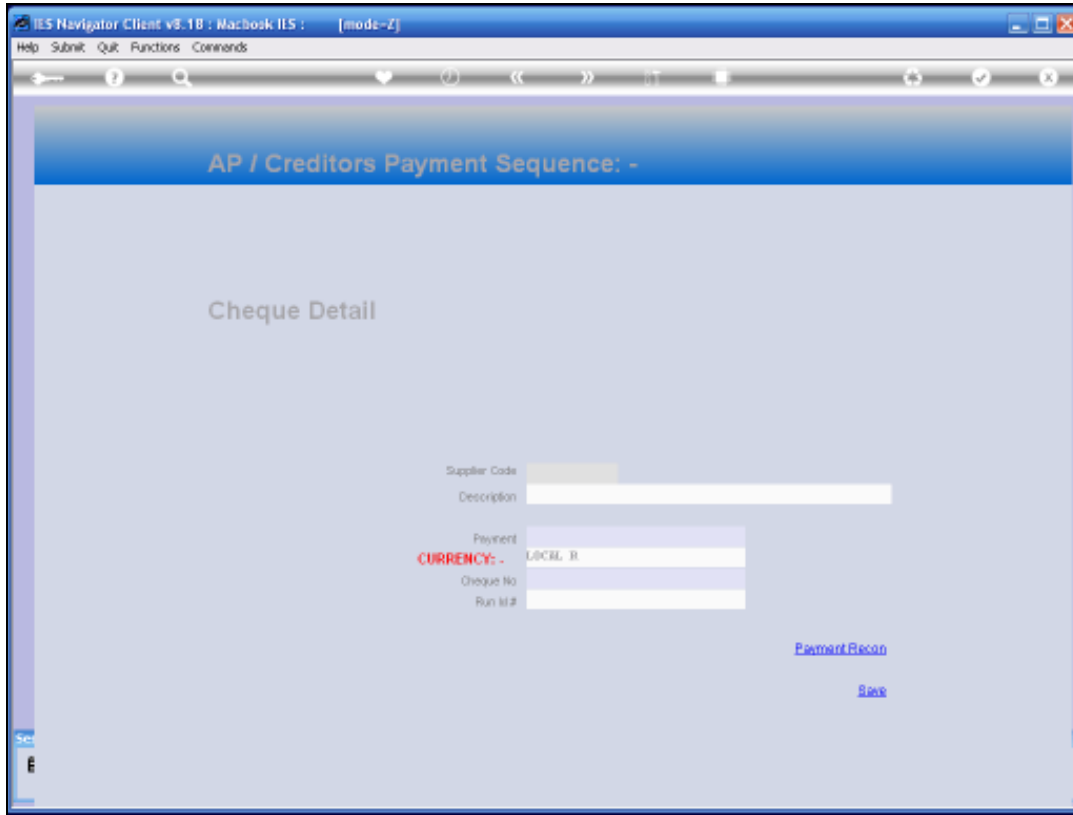


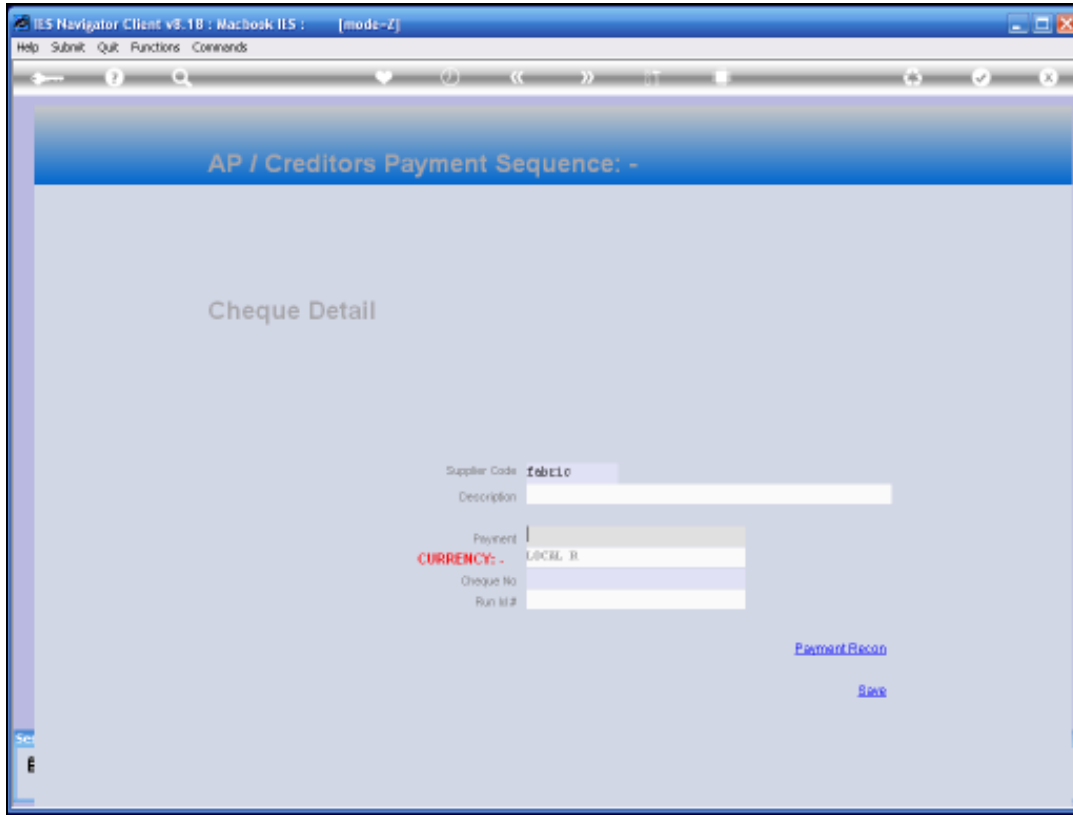
Slide 2

Slide notes: From our Cheque listing, we have the Supplier Accounts that show potential payments.

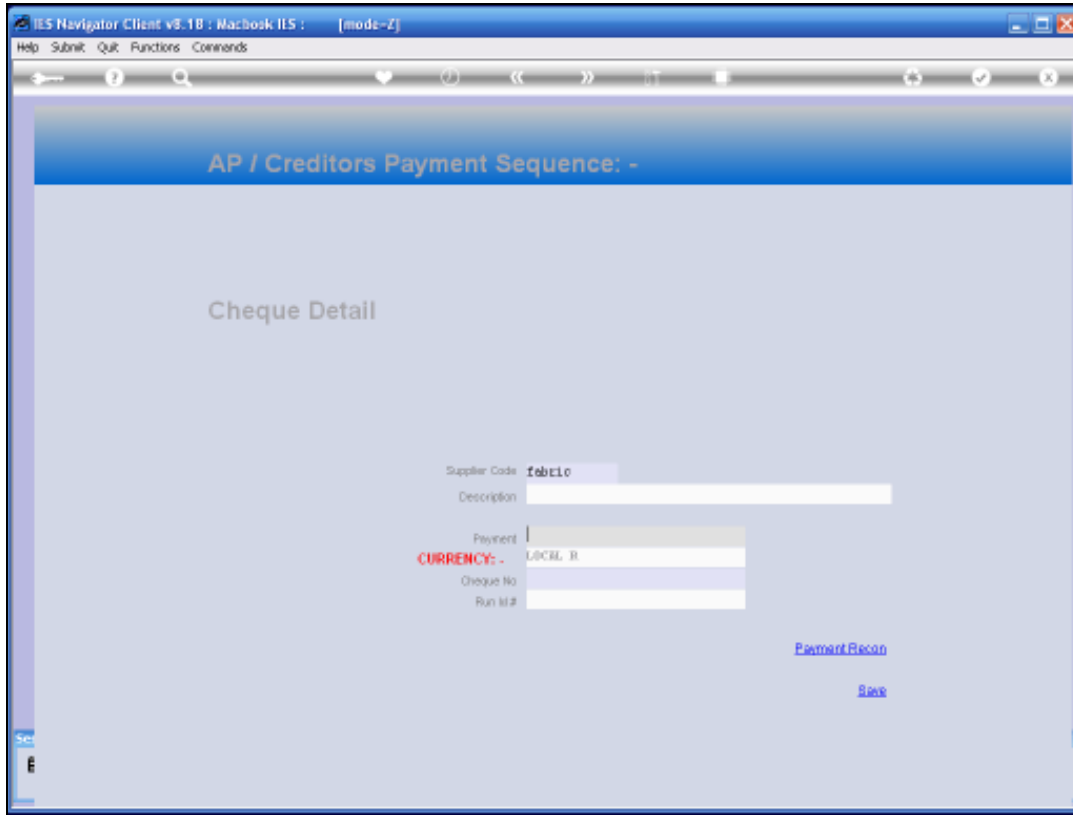


Slide 3

Slide notes:

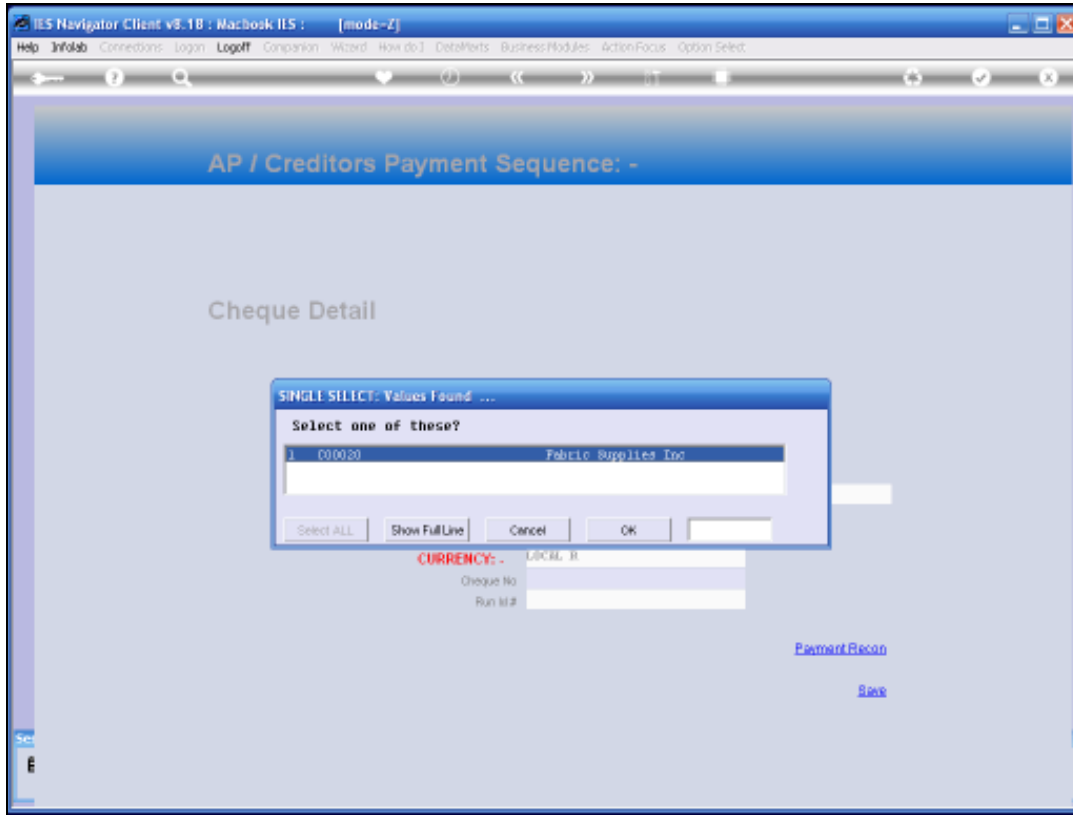


Slide 4  
Slide notes:

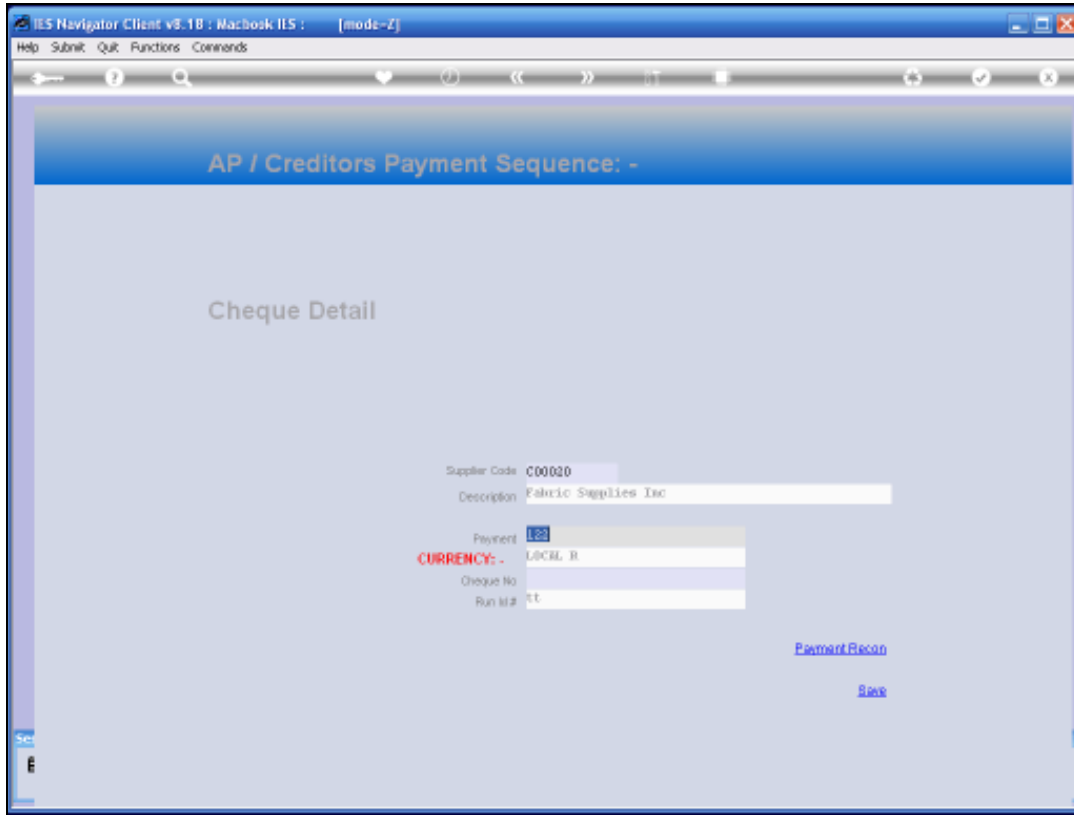


Slide 5

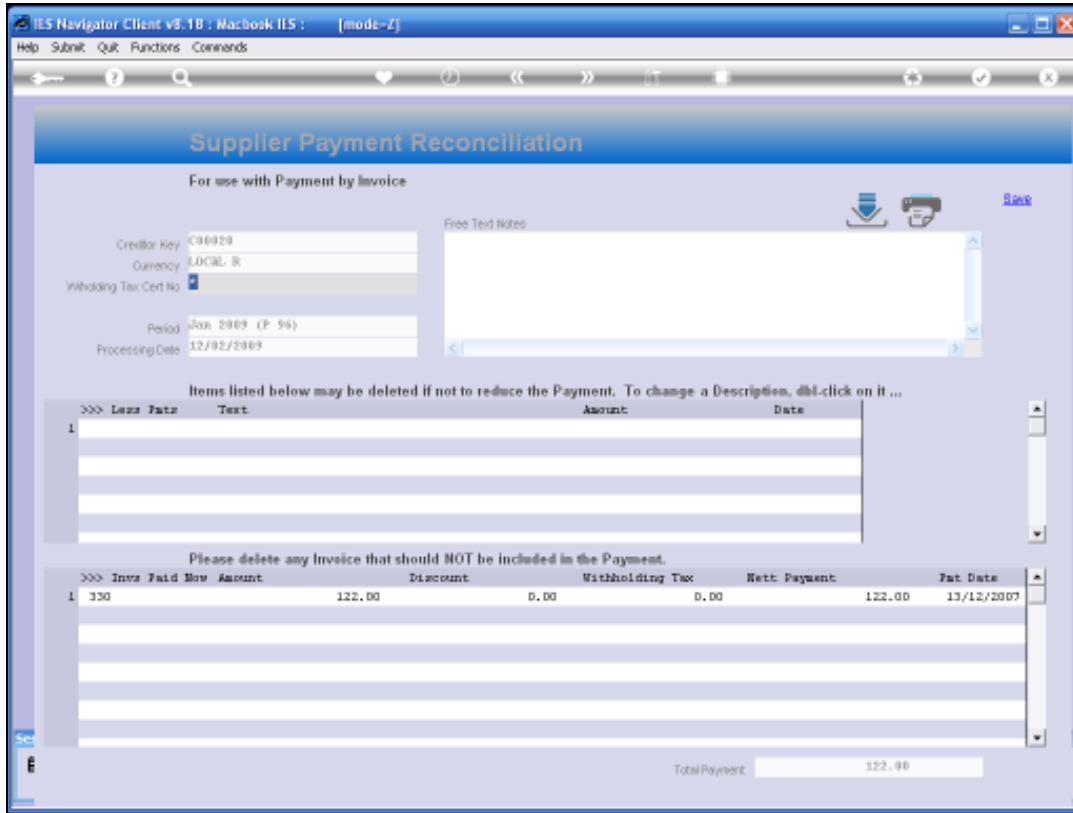
Slide notes: And we can visit each Payment Recon from the working cheque entry, to verify or change it, as may be required.



Slide 6  
Slide notes:

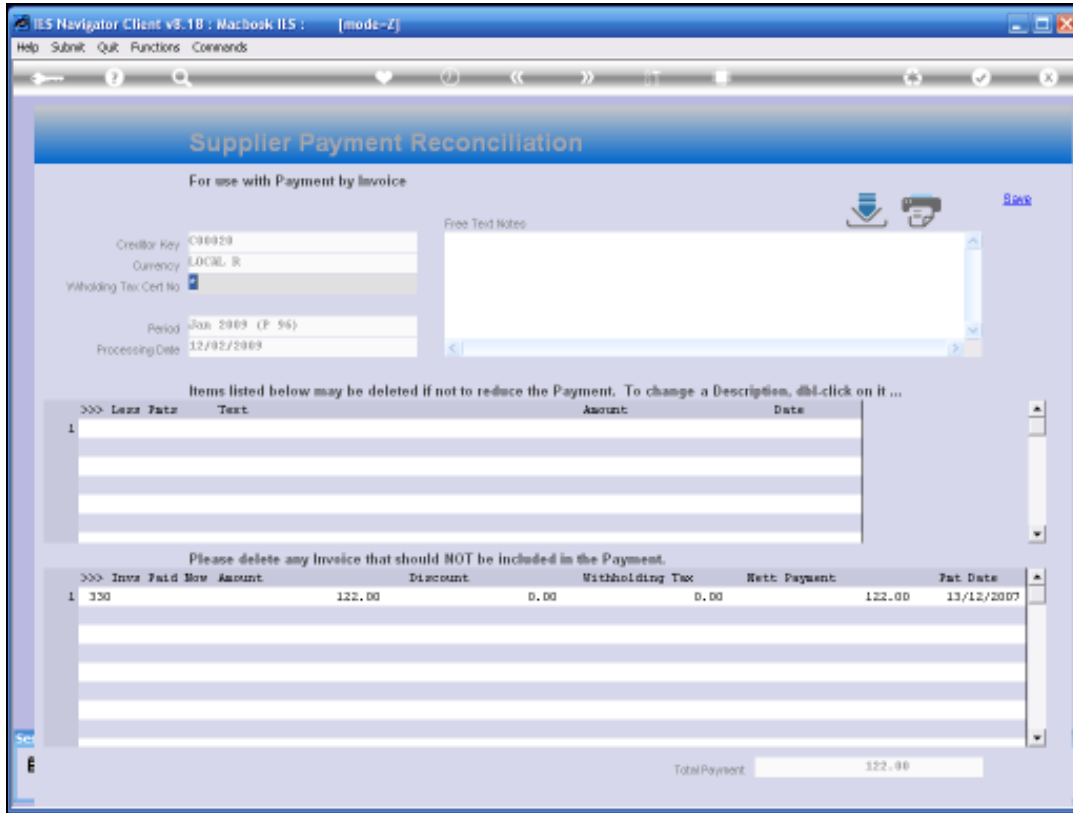


Slide 7  
Slide notes:

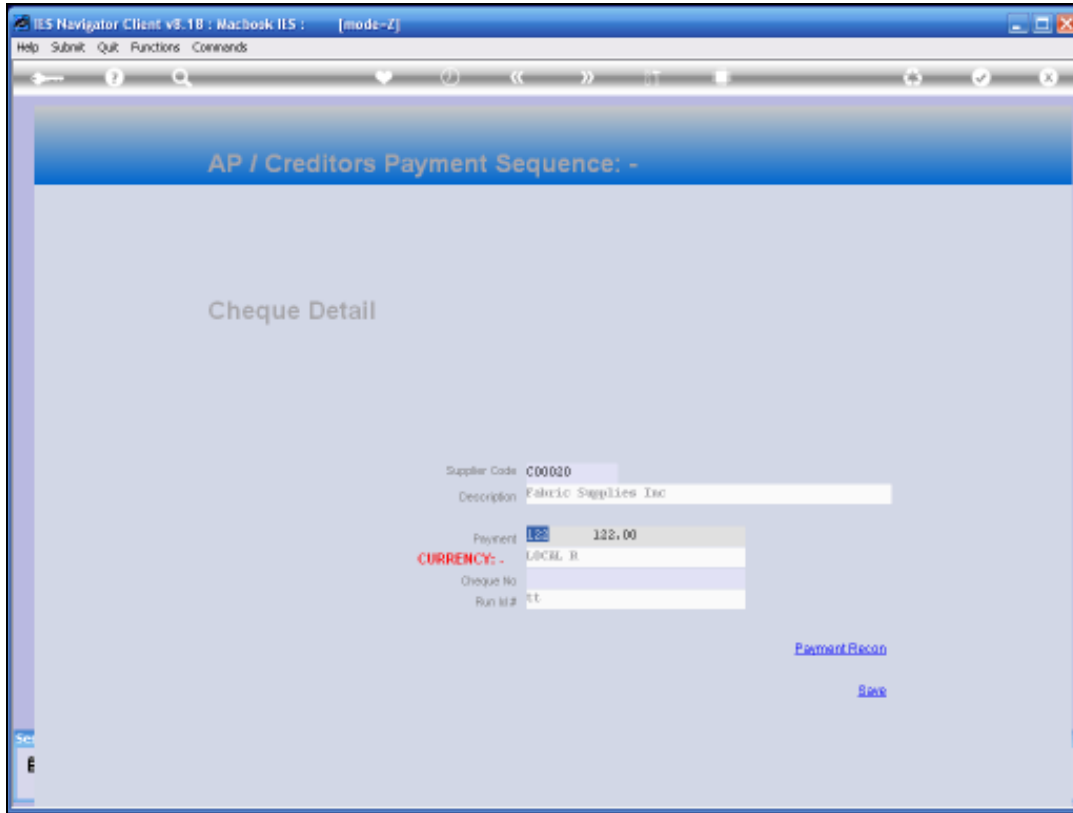


Slide 8

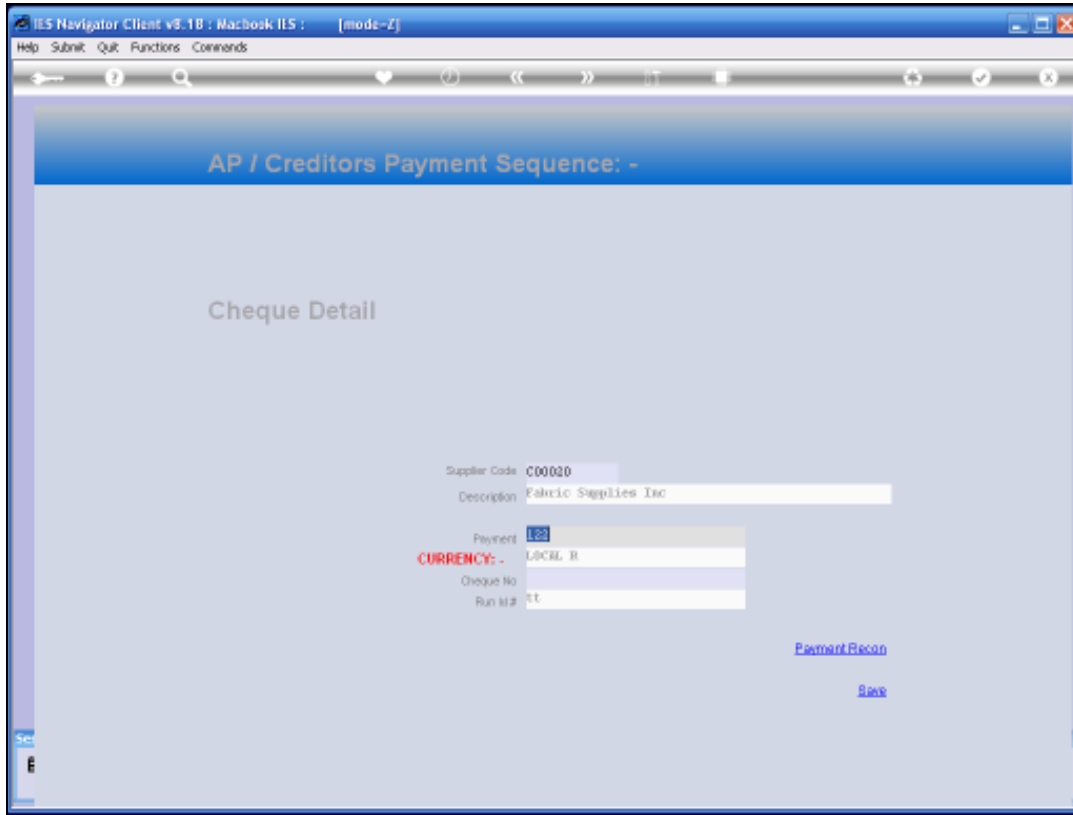
Slide notes: On the Recon, we can reduce payment by removing any listed Invoices for payment, but we cannot increase payment by adding new entries. We can also print the final Payment Recon from here.



Slide 9  
Slide notes:



Slide 10  
Slide notes:



Slide 11  
Slide notes: