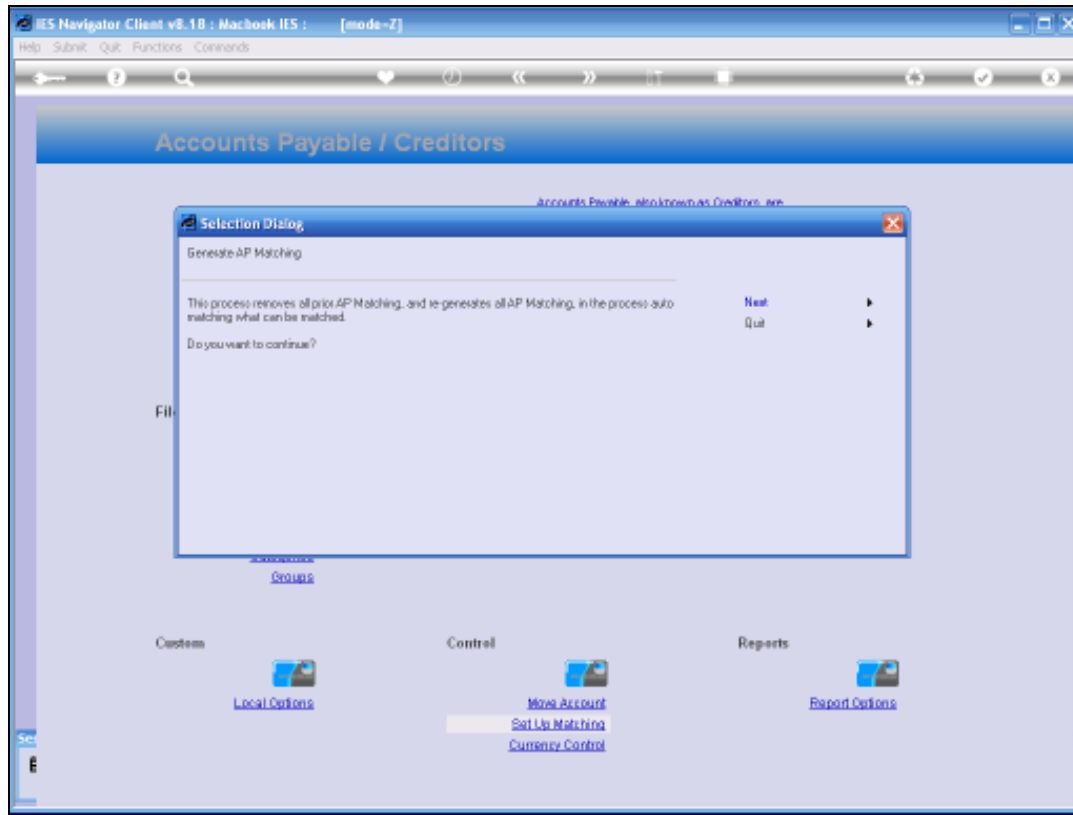




Slide 1

Slide notes: We have a global function for Matching Set Up. This option is normally only used in the beginning of a system set up, because it removes any prior matching on any and all AP accounts, and then automatically matches what can be auto matched.



Slide 2

Slide notes: It is therefore useful during system set up, when prior balances and transactions on new AP Accounts may have been imported from another system. Although it can also be used in a "live" system, it is not often done, since all prior matching history will be lost.



Slide 3
Slide notes: