

IES PRINT WRITER: INTRODUCTION

Purpose

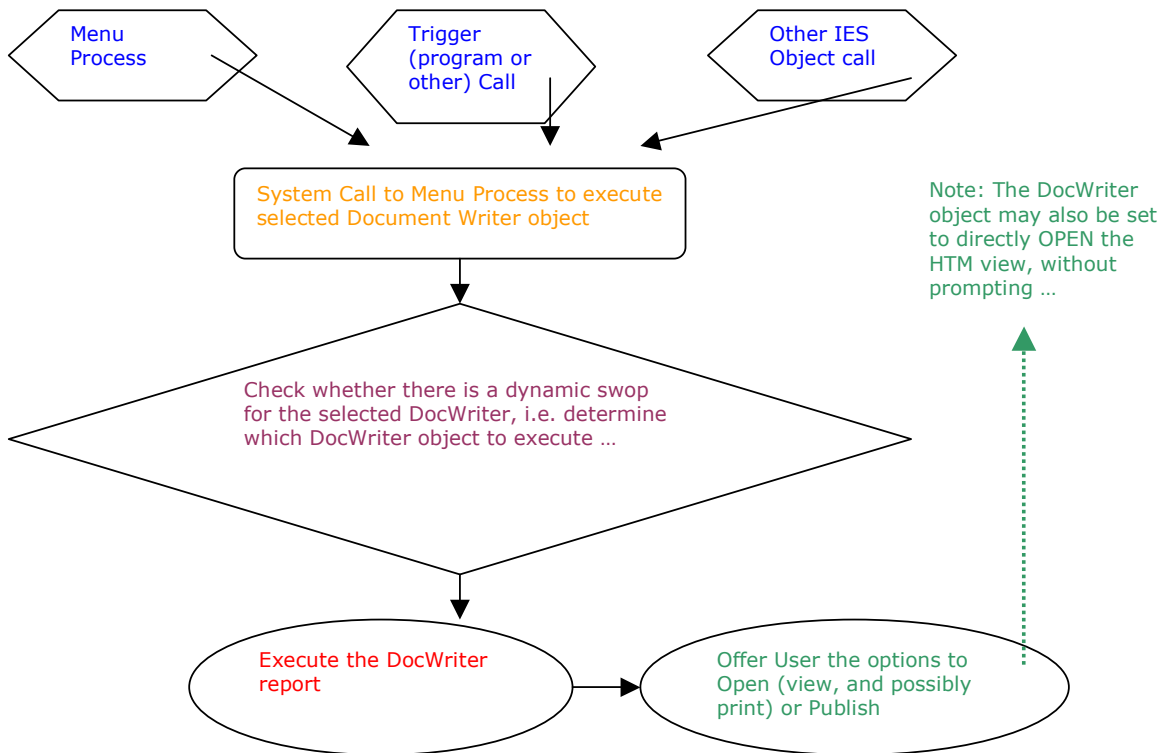
The purpose of this Document is to introduce Print Writer, and its application and capabilities.

Introduction

PrintWriter is essentially a tool that introduces additional automation options to Document Writer. In other words, while Document Writer may be used to design a Report or Document of desired layout, format and appearance, Print Writer may be used to process the Document Writer model, and directly open, print or dispatch the result by e-mail in PDF format.

When a Document Writer report is executed without Print Writer, it produces a result in HTML format, and offers the User options to OPEN it or PUBLISH it to the Report Warehouse. When the User opens a Document Writer Report, the Report may of course also be printed, but this action requires a number of steps, e.g. click to open, click options, click to select printing, etc. Print Writer is used in cases where these steps should be bypassed and the document automatically printed, opened or dispatched by e-mail in PDF format without prompting the User with steps to do so.

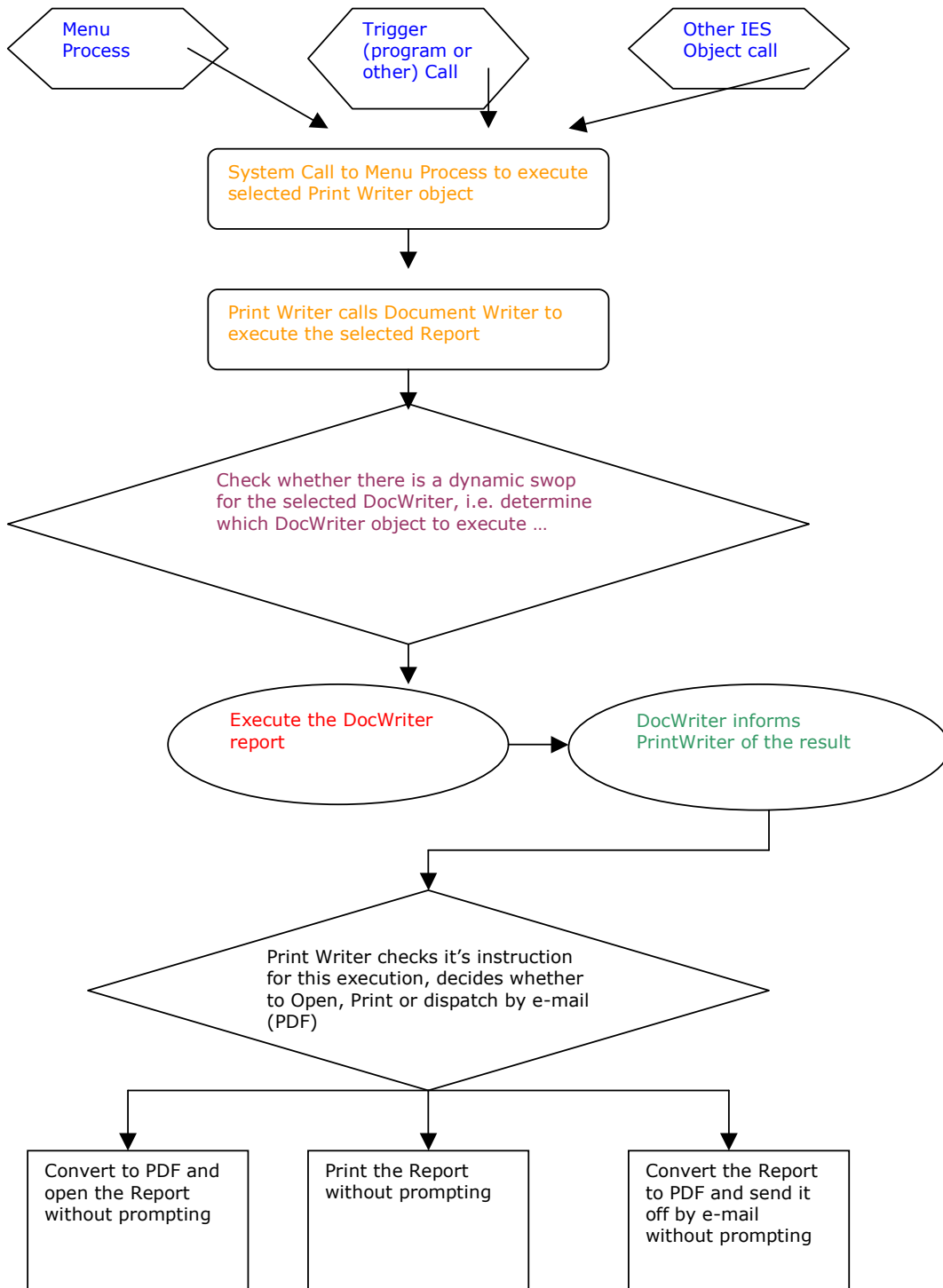
Here is an illustration of Document Writer execution: -




Be sure to use your today!

IES PRINT WRITER: INTRODUCTION

And here is an illustration of Print Writer execution: -



Be sure to use your  today!

IES PRINT WRITER: INTRODUCTION

How to define a Print Writer Object

Print Writer objects are defined in Business Objects, where the Print Writer option is found among the Report Writer options.

PrintWriter Object

PrintWriter executes DocWriter objects, and prints directly to Printer, or produces a PDF which is either auto opened or dispatched onwards by e-mail (e.g. "mail" runs ...)

PrintWriter Key	<input type="text" value="9999-p"/>	<small>use DocWriter Key + "-p" or any unique key ...</small>
Name	<input type="text" value="Balance Sheet"/>	
DocWriter Object	<input type="text" value="9999 Balance Sheet"/>	
Action	<input type="text" value="Print"/>	
Instruction Key	<input type="text" value="*user"/>	
<input type="button" value="Save"/>		


Looking at the picture shown above, we note that there is a convention that is used with the PrintWriter Key, i.e. to use the same Key as for the DocWriter object to call, and suffix that with a dash ('-') and followed by some differentiator. The system will check if the lead characters before the 1st dash is found as a Key on the DocWriter register, and if so, will auto-fill the next 2 fields. This is of course optional, but if you do not follow this convention, then you will have to fill the next 2 fields yourself.

The remaining fields are ACTION and INSTRUCTION KEY, and are dealt with as follows: -

Action	<input type="text" value="Print"/>
	<input type="text" value="Print"/> <input type="text" value="OpenPDF"/> <input type="text" value="MailPDF"/>

For each PrintWriter object, you select the purpose, i.e. choose between automated printing, opening of the pdf conversion of the result, or e-mailing the pdf to a selected addressee.

Hint: You can apply multiple versions of PrintWriter for the same DocWriter object, each with a different action, as may be required.

Be sure to use your  today!

IES PRINT WRITER: INTRODUCTION

The instruction Key is critical, and there are only 2 options, i.e. for PrintWriter to utilise a record in file "docwritespre" that is indexed with a Key that is the current UserCode or with a Key that represents the current network port (the system will seamlessly resolve these values). It is quite important to check which Key may be used by the DocWriter object during it's prerun processing, and the PrintWriter should not clash with DocWriter on this Key. In other words, if DocWriter will use "*user" then PrintWriter should use "*port", and vice versa.

Instruction Key

- *user
- *port

Now consider the clip from a DocWriter object below. In this example, the DocWriter object uses "*user" as a Key on "docwritespre", so if a PrintWriter object is defined to call this DocWriter object, then the Instruction Key should be "*port" and NOT "*user".

PRE RUN PARAMETERS: -

Pre Run Process

Results File

Results Key ←

Proceed on Field #

Conditional Value

DIRECT REFERENCE DATA SOURCES: -

	Data Sources	Data Keys
1	docwritespre	*user ←

There is a lot more we need to explain about the Instruction Key.

This value is less used for: -

- a) when sent to Printer
- b) for opening a PDF

but it is ESSENTIAL for: -

- c) e-mailing a PDF

When the ACTION selected is 'e-mail PDF', then the system needs instructions for the e-mail address, filename to attach, etc. This ACTION is typically used for 'mail runs' where the same DocWriter object is executed again and again for different results. For example, a monthly statement run, where Customers who elect to receive their statements by e-mail can automatically be mailed with a PDF Statement. In this case, the program that performs the statements

Be sure to use your today!

IES PRINT WRITER: INTRODUCTION

will call the PrintWriter process each time a statement is to be mailed by PDF, but it will be for a different Customer each time. Therefore, a record must be written to "docwritespre" either with PORT or current USERCODE as the Key, from which the system will pick up required parameters. The DocWriter object may already be using a record on "docwritespre" with either the PORT or USERCODE as the Key, therefore, you may choose here which Key to use, i.e. not to clash with a Key already in use by the DocWriter object that will be executed by the PrintWriter.

The Record to be written to "docwritespre" must have the following information:

- field 1: e-mail address
- field 2: e-mail title
- field 3: message (optional, may be multi-valued)
- field 4: filename to use for attachment (e.g. typically Customer Account Number [or similar functionality] i.e. the DocWriter result should be attached to the e-mail as a PDF with this name ...)

The system will update the same record with the result, as follows: -

- field 5: internal date (if sent successfully)
- field 6: internal time (if sent successfully)
- field 7: error message if unsuccessful

and this record may be interrogated as a logical rule to establish that the e-mail was dispatched successfully or not.

In other words, when the action for the PrintWriter object is "print" or "open", then the system needs no further instructions, but if the action is "e-mail PDF" then BEFORE the PrintWriter object is called, the necessary parameters must be recorded in "docwritespre" on the selected key, and for control purposes on the "mail run", you may read the record in "docwritespre" AFTER execution of PrintWriter to determine whether the mail action was successful or not, and take appropriate steps. (More about this in the case study document for 'AR Customer Statements'.)

Optional display message: -


- field 8: put an optional display message on this field, to indicate the process activity, e.g. "Preparing Statement FXF55520-21"

As shown above, during a mail run, it is also useful to update the message display on screen to show which Account or step is being processed, by passing the necessary instruction on field 8.

How to call a PrintWriter Object

After defining a PrintWiter object, it should be placed in the Menu Process Library. From there, it can be provided on User Menus OR be called from programs, triggers and other IES objects.

In the documents on "PrintWriter Mail Runs: Shell Program" and "PrintWriter Case Study: AR Customer Statements", you can learn more about calling PrintWriter execution from programs and IES trigger objects.


Be sure to use your  today!

Limitations

Print Writer is specifically designed for pdf conversion of DocWriter reports NOT exceeding 30 pages.

© Infolab, 2006

This Documentation is copyrighted by Infolab (Pty) Ltd. [www.infolab.cc] All rights are reserved. Licensed INFOLAB Users are granted permission, for internal use ONLY, to reproduce the Documentation, and to include amendments dealing with specific instructions local to your installation.

Be sure to use your  today!